

N M M C PROPOSAL FOR APPROVAL
BUA (F.S.I) STATEMENT

A. PLOT AREA = 666.00 SQM
B. PERMISSIBLE F.S.I / 15 = 1299.00 SQM
C. EXISTING BUILT-UP AREA
D. PROPOSED BUILT-UP AREA

- GROUND FLOOR BUA
- FIRST FLOOR BUA
- SECOND FLOOR BUA
- THIRD FLOOR BUA
- FOURTH FLOOR BUA
- FIFTH FLOOR BUA
- SIXTH FLOOR BUA
- SEVENTH FLOOR BUA
- EIGHTH FLOOR BUA
- NINTH FLOOR BUA
- TENTH FLOOR BUA
- ELEVENTH FLOOR BUA
- TWELFTH FLOOR BUA
- THIRTEENTH FLOOR BUA
- FOURTEENTH FLOOR BUA
- FIFTEENTH FLOOR BUA
- SIXTEENTH FLOOR BUA
- SEVENTEENTH FLOOR BUA
- EIGHTEENTH FLOOR BUA
- NINETEENTH FLOOR BUA
- TIENTH FLOOR BUA

E. TOTAL PROPOSED BUILT-UP AREA = 1298.87 SQM
F. PROPOSED F.S.I = 19.35
G. BALANCE BUA = 1288.87 SQM
H. TOTAL RESIDENTIAL AREA = 1288.87 SQM
I. TOTAL COMMERCIAL AREA
J. NO. OF RESIDENTIAL UNITS = 74 NLS

1. WATER SUPPLY REQUIREMENTS

USE	WATER DEMAND (LITERS PER PERSON PER DAY)	WATER DEMAND (LITERS PER SECOND)
DOMESTIC	170.00	1.96
TOILET	10.00	0.12
SHOWER	10.00	0.12
BATH	10.00	0.12
WASHING MACHINE	10.00	0.12
LAUNDRY	10.00	0.12
COOKING	10.00	0.12
DRINKING	10.00	0.12
IRRIGATION	10.00	0.12
OTHER	10.00	0.12
TOTAL	200.00	2.36

2. SANITARY REQUIREMENTS

FLOOR	NO. OF TOILETS REQUIRED	NO. OF TOILETS PROVIDED
GROUND FLOOR	1	1
FIRST FLOOR	2	2
SECOND FLOOR	2	2
THIRD FLOOR	2	2
FOURTH FLOOR	2	2
FIFTH FLOOR	2	2
SIXTH FLOOR	2	2
SEVENTH FLOOR	2	2
EIGHTH FLOOR	2	2
NINTH FLOOR	2	2
TENTH FLOOR	2	2
ELEVENTH FLOOR	2	2
TWELFTH FLOOR	2	2
THIRTEENTH FLOOR	2	2
FOURTEENTH FLOOR	2	2
FIFTEENTH FLOOR	2	2
SIXTEENTH FLOOR	2	2
SEVENTEENTH FLOOR	2	2
EIGHTEENTH FLOOR	2	2
NINETEENTH FLOOR	2	2
TIENTH FLOOR	2	2
TOTAL	33	33

3. PARKING STATEMENT

REQUIREMENT	PROVIDED
STILL BELOW PODIUM	45
OPEN SPACES PODIUM/PARKAGE	37
TOTAL	82

REVISION

REV. NO.	DESCRIPTION	DATE	BY
01	Changes as required etc.	20/04/2015	P.S.S.
02	Building allied areas as area etc.	31/03/2015	P.S.S.
03	Building allied areas as area etc.	21/02/2015	P.S.S.

CONTENTS OF SHEET

- GROUND FLOOR PLAN
- TYPICAL FLOOR PLANING OUTLINE WITH UTILITIES/FLOOR PLAN
- POOL PLAN
- SWIMMING POOL PLAN
- PAVING PLAN AT THE FT
- WATER SUPPLY STATEMENT
- COOK & WASHING SCHEDULE
- LAUNDRY PLAN
- LOCATION PLAN
- AREA/USABLE CALCULATION

DESCRIPTION OF PROPOSAL

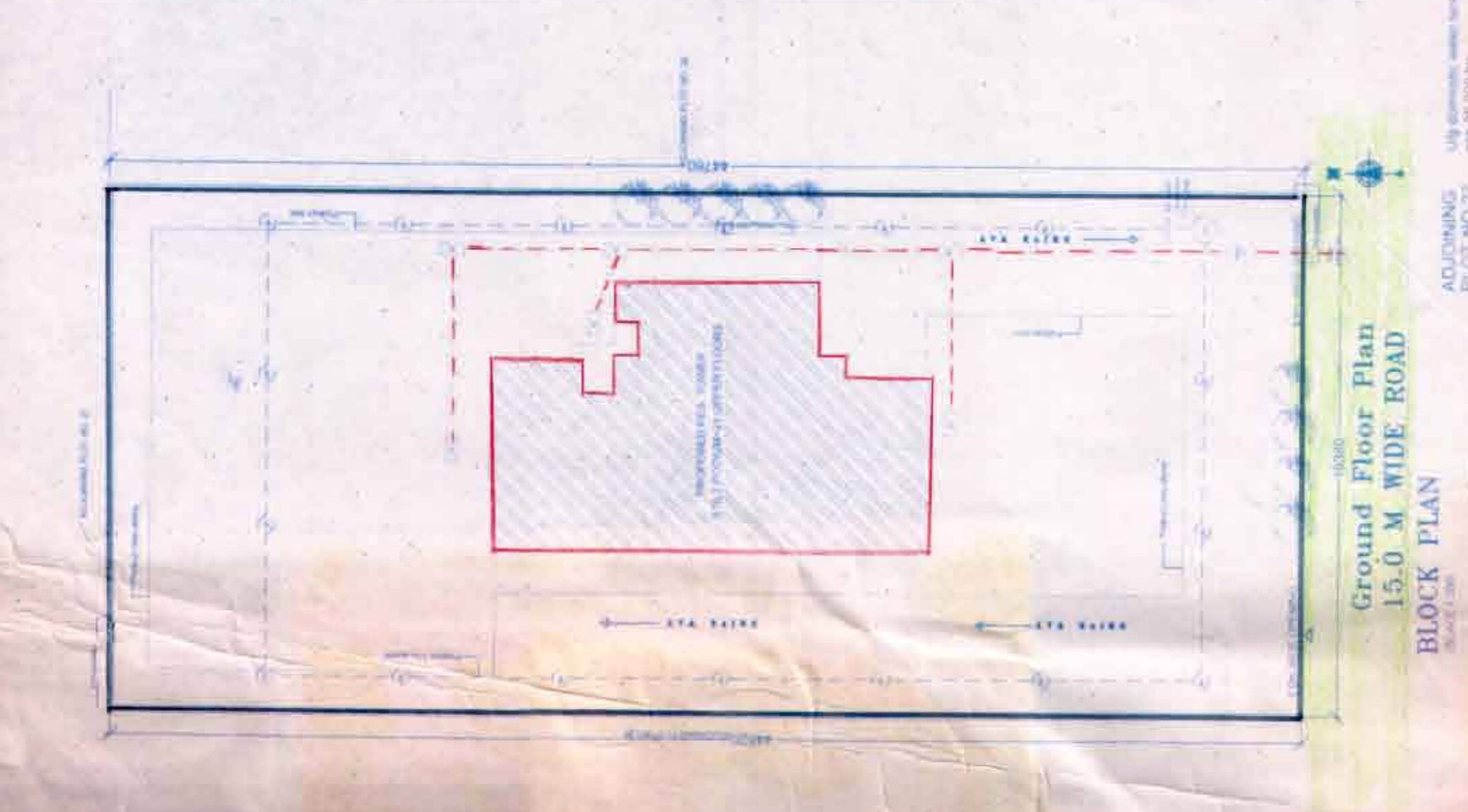
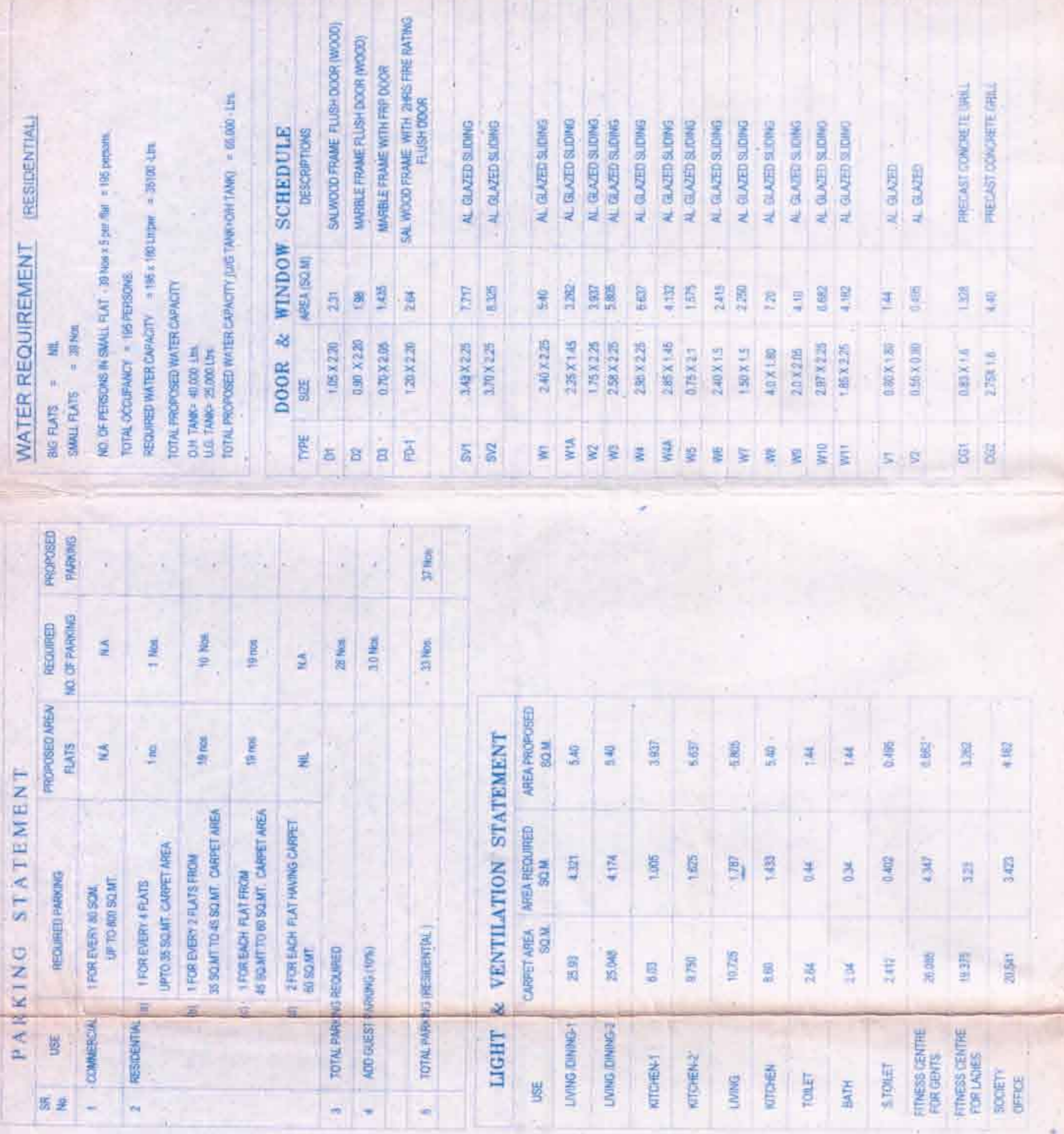
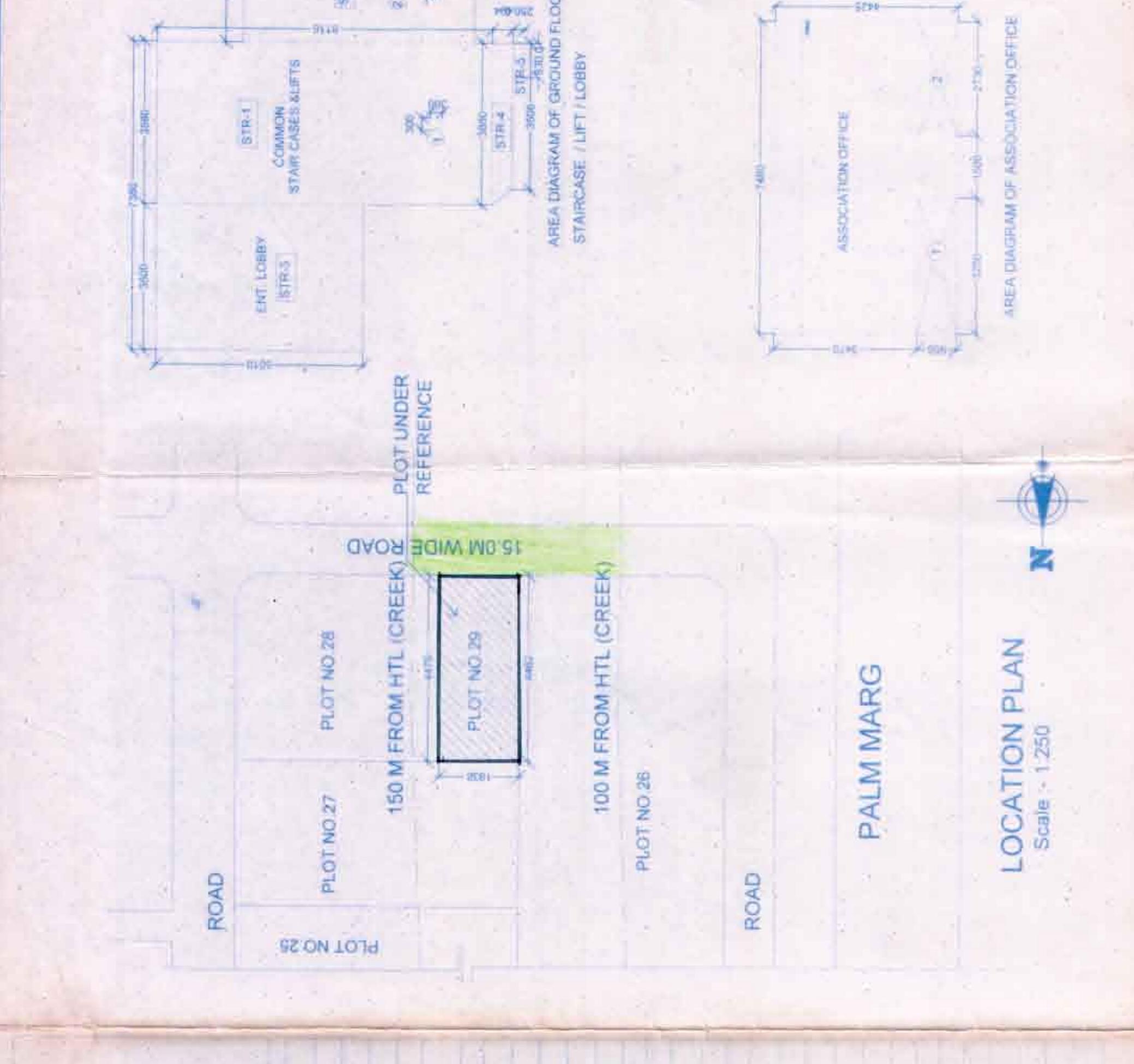
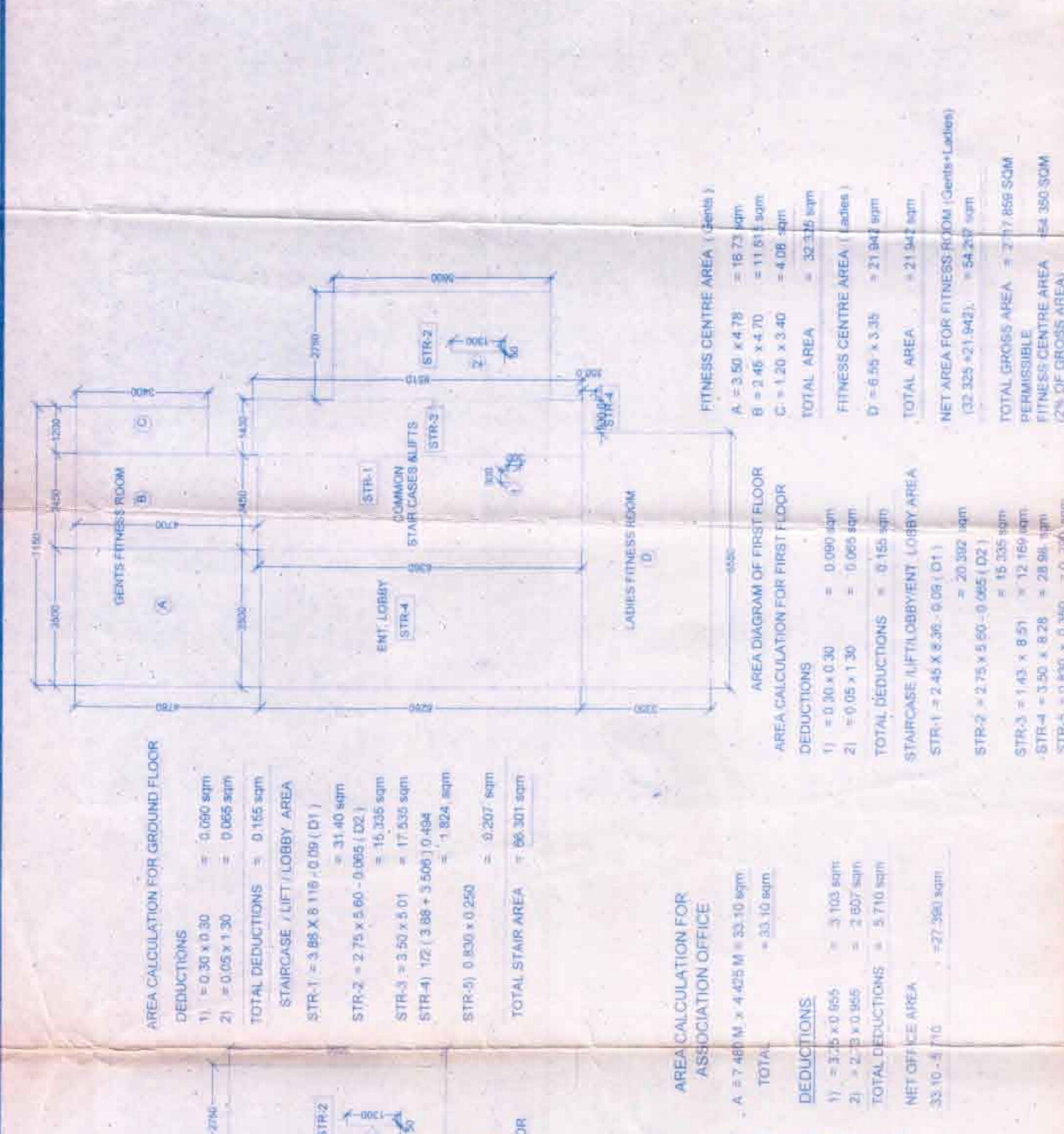
PROPOSED RESIDENTIAL TOWER
ON GES PLOT NO. 29 - SECTOR 6
NERUL, NAVY MUMBAI.

NAME AND SIGNATURE OF LESSEE

Proprietor - **OMPRAKASH WADHWA**

NAME AND SIGNATURE OF THE ARCHITECT

B.S. GOVINDARAJAN
P. CH. I. E. C. C.
100, J.K. CHAMBERS, SEC. 11,
MUMBAI-400 016.
www.bs.govindarajan.com



AREA CALCULATION FOR GROUND FLOOR

DEDUCTIONS

- 1) = 0.30 x 0.30 = 0.09 sqm
- 2) = 0.05 x 1.30 = 0.065 sqm

TOTAL DEDUCTIONS = 0.155 sqm

STAIRCASE / LIFT LOBBY AREA

- STR-1 = 3.88 x 8.11 = 31.47 sqm
- STR-2 = 2.75 x 5.90 = 16.22 sqm
- STR-3 = 3.50 x 5.01 = 17.535 sqm
- STR-4 = 1.02 (3.88 + 3.50) / 0.84 = 8.30 sqm
- STR-5 = 0.80 x 0.25 = 0.20 sqm

TOTAL STAIR AREA = 80.301 sqm

AREA CALCULATION FOR ASSOCIATION OFFICE

A. 7.48 M x 4.02 M = 30.19 sqm

DEDUCTIONS

- 1) = 3.25 x 0.65 = 2.1125 sqm
- 2) = 2.25 x 0.65 = 1.4625 sqm

TOTAL DEDUCTIONS = 3.575 sqm

NET OFFICE AREA = 33.90 - 3.575 = 27.325 sqm

AREA CALCULATION FOR FIRST FLOOR

DEDUCTIONS

- 1) = 0.30 x 0.30 = 0.09 sqm
- 2) = 0.05 x 1.30 = 0.065 sqm

TOTAL DEDUCTIONS = 0.155 sqm

STAIRCASE / LIFT LOBBY AREA

- STR-1 = 3.88 x 8.11 = 31.47 sqm
- STR-2 = 2.75 x 5.90 = 16.22 sqm
- STR-3 = 3.50 x 5.01 = 17.535 sqm
- STR-4 = 1.02 (3.88 + 3.50) / 0.84 = 8.30 sqm
- STR-5 = 0.80 x 0.25 = 0.20 sqm

TOTAL STAIR AREA = 80.301 sqm

AREA CALCULATION FOR SECOND FLOOR

DEDUCTIONS

- 1) = 0.30 x 0.30 = 0.09 sqm
- 2) = 0.05 x 1.30 = 0.065 sqm

TOTAL DEDUCTIONS = 0.155 sqm

STAIRCASE / LIFT LOBBY AREA

- STR-1 = 3.88 x 8.11 = 31.47 sqm
- STR-2 = 2.75 x 5.90 = 16.22 sqm
- STR-3 = 3.50 x 5.01 = 17.535 sqm
- STR-4 = 1.02 (3.88 + 3.50) / 0.84 = 8.30 sqm
- STR-5 = 0.80 x 0.25 = 0.20 sqm

TOTAL STAIR AREA = 80.301 sqm

WATER REQUIREMENT (RESIDENTIAL)

NO. OF PERSONS IN SMALL FLAT = 18 Nos (3 per flat x 6 flat)
NO. OF PERSONS IN MEDIUM FLAT = 18 Nos (3 per flat x 6 flat)
NO. OF PERSONS IN LARGE FLAT = 18 Nos (3 per flat x 6 flat)
TOTAL OCCUPANCY = 54 PERSONS
REQUIRED WATER CAPACITY = 18 x 150 = 2700 Ltrs
TOTAL PROPOSED WATER CAPACITY = 2700 Ltrs
TOTAL PROPOSED WATER CAPACITY (LITERS PER HOUR) = 2700 Ltrs
TOTAL PROPOSED WATER CAPACITY (LITERS PER MINUTE) = 45 Ltrs

DOOR & WINDOW SCHEDULE

TYPE	SIZE	AREA (SQM)	DESCRIPTION
D1	1.8 x 2.3	4.14	SALWOOD FRAME TUSH-DOOR (WOOD)
D2	0.8 x 2.2	1.76	WALNUT FRAME TUSH-DOOR (WOOD)
D3	0.7 x 2.2	1.54	WALNUT FRAME WITH FRP FLOOR TUSH-DOOR
D4	1.2 x 2.3	2.76	SAL WOOD FRAME WITH 24HS FIRE RATING TUSH-DOOR
W1	1.8 x 2.3	4.14	A. GLAZED WINDOW
W2	0.8 x 2.2	1.76	A. GLAZED WINDOW
W3	0.7 x 2.2	1.54	A. GLAZED WINDOW
W4	1.2 x 2.3	2.76	A. GLAZED WINDOW
W5	2.0 x 2.3	4.60	A. GLAZED WINDOW
W6	2.5 x 2.3	5.75	A. GLAZED WINDOW
W7	3.0 x 2.3	6.90	A. GLAZED WINDOW
W8	3.5 x 2.3	8.05	A. GLAZED WINDOW
W9	4.0 x 2.3	9.20	A. GLAZED WINDOW
W10	4.5 x 2.3	10.35	A. GLAZED WINDOW
W11	5.0 x 2.3	11.50	A. GLAZED WINDOW
W12	5.5 x 2.3	12.65	A. GLAZED WINDOW
W13	6.0 x 2.3	13.80	A. GLAZED WINDOW
W14	6.5 x 2.3	14.95	A. GLAZED WINDOW
W15	7.0 x 2.3	16.10	A. GLAZED WINDOW
W16	7.5 x 2.3	17.25	A. GLAZED WINDOW
W17	8.0 x 2.3	18.40	A. GLAZED WINDOW
W18	8.5 x 2.3	19.55	A. GLAZED WINDOW
W19	9.0 x 2.3	20.70	A. GLAZED WINDOW
W20	9.5 x 2.3	21.85	A. GLAZED WINDOW
W21	10.0 x 2.3	23.00	A. GLAZED WINDOW
W22	10.5 x 2.3	24.15	A. GLAZED WINDOW
W23	11.0 x 2.3	25.30	A. GLAZED WINDOW
W24	11.5 x 2.3	26.45	A. GLAZED WINDOW
W25	12.0 x 2.3	27.60	A. GLAZED WINDOW
W26	12.5 x 2.3	28.75	A. GLAZED WINDOW
W27	13.0 x 2.3	29.90	A. GLAZED WINDOW
W28	13.5 x 2.3	31.05	A. GLAZED WINDOW
W29	14.0 x 2.3	32.20	A. GLAZED WINDOW
W30	14.5 x 2.3	33.35	A. GLAZED WINDOW
W31	15.0 x 2.3	34.50	A. GLAZED WINDOW
W32	15.5 x 2.3	35.65	A. GLAZED WINDOW
W33	16.0 x 2.3	36.80	A. GLAZED WINDOW
W34	16.5 x 2.3	37.95	A. GLAZED WINDOW
W35	17.0 x 2.3	39.10	A. GLAZED WINDOW
W36	17.5 x 2.3	40.25	A. GLAZED WINDOW
W37	18.0 x 2.3	41.40	A. GLAZED WINDOW
W38	18.5 x 2.3	42.55	A. GLAZED WINDOW
W39	19.0 x 2.3	43.70	A. GLAZED WINDOW
W40	19.5 x 2.3	44.85	A. GLAZED WINDOW
W41	20.0 x 2.3	46.00	A. GLAZED WINDOW
W42	20.5 x 2.3	47.15	A. GLAZED WINDOW
W43	21.0 x 2.3	48.30	A. GLAZED WINDOW
W44	21.5 x 2.3	49.45	A. GLAZED WINDOW
W45	22.0 x 2.3	50.60	A. GLAZED WINDOW
W46	22.5 x 2.3	51.75	A. GLAZED WINDOW
W47	23.0 x 2.3	52.90	A. GLAZED WINDOW
W48	23.5 x 2.3	54.05	A. GLAZED WINDOW
W49	24.0 x 2.3	55.20	A. GLAZED WINDOW
W50	24.5 x 2.3	56.35	A. GLAZED WINDOW
W51	25.0 x 2.3	57.50	A. GLAZED WINDOW
W52	25.5 x 2.3	58.65	A. GLAZED WINDOW
W53	26.0 x 2.3	59.80	A. GLAZED WINDOW
W54	26.5 x 2.3	60.95	A. GLAZED WINDOW
W55	27.0 x 2.3	62.10	A. GLAZED WINDOW
W56	27.5 x 2.3	63.25	A. GLAZED WINDOW
W57	28.0 x 2.3	64.40	A. GLAZED WINDOW
W58	28.5 x 2.3	65.55	A. GLAZED WINDOW
W59	29.0 x 2.3	66.70	A. GLAZED WINDOW
W60	29.5 x 2.3	67.85	A. GLAZED WINDOW
W61	30.0 x 2.3	69.00	A. GLAZED WINDOW
W62	30.5 x 2.3	70.15	A. GLAZED WINDOW
W63	31.0 x 2.3	71.30	A. GLAZED WINDOW
W64	31.5 x 2.3	72.45	A. GLAZED WINDOW
W65	32.0 x 2.3	73.60	A. GLAZED WINDOW
W66	32.5 x 2.3	74.75	A. GLAZED WINDOW
W67	33.0 x 2.3	75.90	A. GLAZED WINDOW
W68	33.5 x 2.3	77.05	A. GLAZED WINDOW
W69	34.0 x 2.3	78.20	A. GLAZED WINDOW
W70	34.5 x 2.3	79.35	A. GLAZED WINDOW
W71	35.0 x 2.3	80.50	A. GLAZED WINDOW
W72	35.5 x 2.3	81.65	A. GLAZED WINDOW
W73	36.0 x 2.3	82.80	A. GLAZED WINDOW
W74	36.5 x 2.3	83.95	A. GLAZED WINDOW
W75	37.0 x 2.3	85.10	A. GLAZED WINDOW
W76	37.5 x 2.3	86.25	A. GLAZED WINDOW
W77	38.0 x 2.3	87.40	A. GLAZED WINDOW
W78	38.5 x 2.3	88.55	A. GLAZED WINDOW
W79	39.0 x 2.3	89.70	A. GLAZED WINDOW
W80	39.5 x 2.3	90.85	A. GLAZED WINDOW
W81	40.0 x 2.3	92.00	A. GLAZED WINDOW
W82	40.5 x 2.3	93.15	A. GLAZED WINDOW
W83	41.0 x 2.3	94.30	A. GLAZED WINDOW
W84	41.5 x 2.3	95.45	A. GLAZED WINDOW
W85	42.0 x 2.3	96.60	A. GLAZED WINDOW
W86	42.5 x 2.3	97.75	A. GLAZED WINDOW
W87	43.0 x 2.3	98.90	A. GLAZED WINDOW
W88	43.5 x 2.3	100.05	A. GLAZED WINDOW
W89	44.0 x 2.3	101.20	A. GLAZED WINDOW
W90	44.5 x 2.3	102.35	A. GLAZED WINDOW
W91	45.0 x 2.3	103.50	A. GLAZED WINDOW
W92	45.5 x 2.3	104.65	A. GLAZED WINDOW
W93	46.0 x 2.3	105.80	A. GLAZED WINDOW
W94	46.5 x 2.3	106.95	A. GLAZED WINDOW
W95	47.0 x 2.3	108.10	A. GLAZED WINDOW
W96	47.5 x 2.3	109.25	A. GLAZED WINDOW
W97	48.0 x 2.3	110.40	A. GLAZED WINDOW
W98	48.5 x 2.3	111.55	A. GLAZED WINDOW
W99	49.0 x 2.3	112.70	A. GLAZED WINDOW
W100	49.5 x 2.3	113.85	A. GLAZED WINDOW

