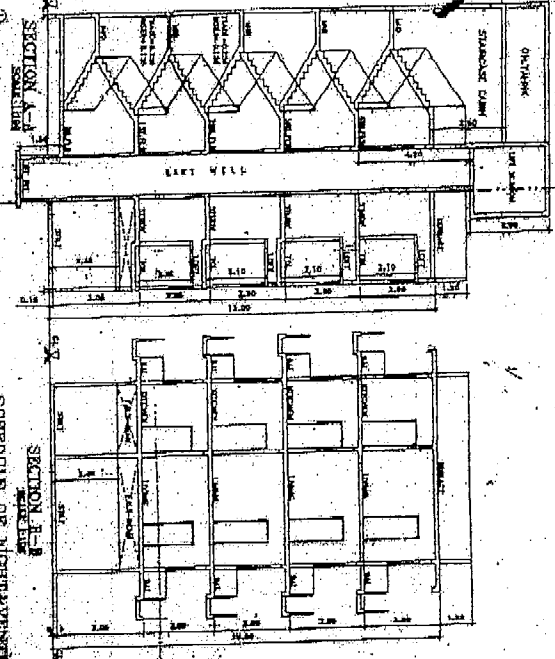
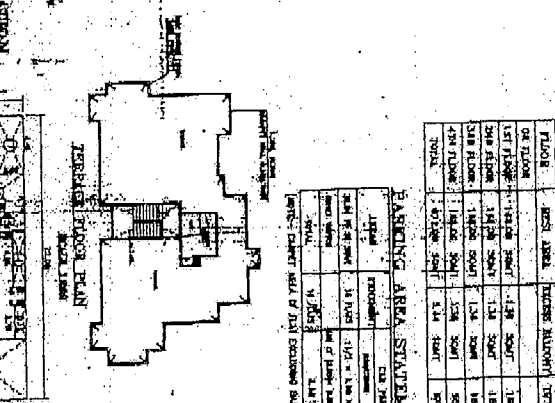


ELEVATION (South Elevation)



SECTION A-A



SECTION B-B

AREA SCHEDULE OF THE BUILDING

NO.	DESCRIPTION	AREA (SQ. FT.)
1	FIRST FLOOR	10,000
2	SECOND FLOOR	10,000
3	THIRD FLOOR	10,000
4	FOURTH FLOOR	10,000
5	FIFTH FLOOR	10,000
6	SIXTH FLOOR	10,000
7	SEVENTH FLOOR	10,000
8	EIGHTH FLOOR	10,000
9	NINTH FLOOR	10,000
10	TENTH FLOOR	10,000
11	ROOF	10,000
12	STAIRS	1,000
13	LIFTS	500
14	MECHANICAL	500
15	ELECTRICAL	500
16	PLUMBING	500
17	PAINT	500
18	GLASS	500
19	IRONWORK	500
20	CONCRETE	500
21	STEEL	500
22	WOOD	500
23	CEILING	500
24	FLOORING	500
25	WALLS	500
26	DOORS	500
27	WINDOWS	500
28	ROOFING	500
29	MECHANICAL	500
30	ELECTRICAL	500
31	PLUMBING	500
32	PAINT	500
33	GLASS	500
34	IRONWORK	500
35	CONCRETE	500
36	STEEL	500
37	WOOD	500
38	CEILING	500
39	FLOORING	500
40	WALLS	500
41	DOORS	500
42	WINDOWS	500
43	ROOFING	500
44	MECHANICAL	500
45	ELECTRICAL	500
46	PLUMBING	500
47	PAINT	500
48	GLASS	500
49	IRONWORK	500
50	CONCRETE	500
51	STEEL	500
52	WOOD	500
53	CEILING	500
54	FLOORING	500
55	WALLS	500
56	DOORS	500
57	WINDOWS	500
58	ROOFING	500
59	MECHANICAL	500
60	ELECTRICAL	500
61	PLUMBING	500
62	PAINT	500
63	GLASS	500
64	IRONWORK	500
65	CONCRETE	500
66	STEEL	500
67	WOOD	500
68	CEILING	500
69	FLOORING	500
70	WALLS	500
71	DOORS	500
72	WINDOWS	500
73	ROOFING	500
74	MECHANICAL	500
75	ELECTRICAL	500
76	PLUMBING	500
77	PAINT	500
78	GLASS	500
79	IRONWORK	500
80	CONCRETE	500
81	STEEL	500
82	WOOD	500
83	CEILING	500
84	FLOORING	500
85	WALLS	500
86	DOORS	500
87	WINDOWS	500
88	ROOFING	500
89	MECHANICAL	500
90	ELECTRICAL	500
91	PLUMBING	500
92	PAINT	500
93	GLASS	500
94	IRONWORK	500
95	CONCRETE	500
96	STEEL	500
97	WOOD	500
98	CEILING	500
99	FLOORING	500
100	WALLS	500
101	DOORS	500
102	WINDOWS	500
103	ROOFING	500
104	MECHANICAL	500
105	ELECTRICAL	500
106	PLUMBING	500
107	PAINT	500
108	GLASS	500
109	IRONWORK	500
110	CONCRETE	500
111	STEEL	500
112	WOOD	500
113	CEILING	500
114	FLOORING	500
115	WALLS	500
116	DOORS	500
117	WINDOWS	500
118	ROOFING	500
119	MECHANICAL	500
120	ELECTRICAL	500
121	PLUMBING	500
122	PAINT	500
123	GLASS	500
124	IRONWORK	500
125	CONCRETE	500
126	STEEL	500
127	WOOD	500
128	CEILING	500
129	FLOORING	500
130	WALLS	500
131	DOORS	500
132	WINDOWS	500
133	ROOFING	500
134	MECHANICAL	500
135	ELECTRICAL	500
136	PLUMBING	500
137	PAINT	500
138	GLASS	500
139	IRONWORK	500
140	CONCRETE	500
141	STEEL	500
142	WOOD	500
143	CEILING	500
144	FLOORING	500
145	WALLS	500
146	DOORS	500
147	WINDOWS	500
148	ROOFING	500
149	MECHANICAL	500
150	ELECTRICAL	500
151	PLUMBING	500
152	PAINT	500
153	GLASS	500
154	IRONWORK	500
155	CONCRETE	500
156	STEEL	500
157	WOOD	500
158	CEILING	500
159	FLOORING	500
160	WALLS	500
161	DOORS	500
162	WINDOWS	500
163	ROOFING	500
164	MECHANICAL	500
165	ELECTRICAL	500
166	PLUMBING	500
167	PAINT	500
168	GLASS	500
169	IRONWORK	500
170	CONCRETE	500
171	STEEL	500
172	WOOD	500
173	CEILING	500
174	FLOORING	500
175	WALLS	500
176	DOORS	500
177	WINDOWS	500
178	ROOFING	500
179	MECHANICAL	500
180	ELECTRICAL	500
181	PLUMBING	500
182	PAINT	500
183	GLASS	500
184	IRONWORK	500
185	CONCRETE	500
186	STEEL	500
187	WOOD	500
188	CEILING	500
189	FLOORING	500
190	WALLS	500
191	DOORS	500
192	WINDOWS	500
193	ROOFING	500
194	MECHANICAL	500
195	ELECTRICAL	500
196	PLUMBING	500
197	PAINT	500
198	GLASS	500
199	IRONWORK	500
200	CONCRETE	500
201	STEEL	500
202	WOOD	500
203	CEILING	500
204	FLOORING	500
205	WALLS	500
206	DOORS	500
207	WINDOWS	500
208	ROOFING	500
209	MECHANICAL	500
210	ELECTRICAL	500
211	PLUMBING	500
212	PAINT	500
213	GLASS	500
214	IRONWORK	500
215	CONCRETE	500
216	STEEL	500
217	WOOD	500
218	CEILING	500
219	FLOORING	500
220	WALLS	500
221	DOORS	500
222	WINDOWS	500
223	ROOFING	500
224	MECHANICAL	500
225	ELECTRICAL	500
226	PLUMBING	500
227	PAINT	500
228	GLASS	500
229	IRONWORK	500
230	CONCRETE	500
231	STEEL	500
232	WOOD	500
233	CEILING	500
234	FLOORING	500
235	WALLS	500
236	DOORS	500
237	WINDOWS	500
238	ROOFING	500
239	MECHANICAL	500
240	ELECTRICAL	500
241	PLUMBING	500
242	PAINT	500
243	GLASS	500
244	IRONWORK	500
245	CONCRETE	500
246	STEEL	500
247	WOOD	500
248	CEILING	500
249	FLOORING	500
250	WALLS	500
251	DOORS	500
252	WINDOWS	500
253	ROOFING	500
254	MECHANICAL	500
255	ELECTRICAL	500
256	PLUMBING	500
257	PAINT	500
258	GLASS	500
259	IRONWORK	500
260	CONCRETE	500
261	STEEL	500
262	WOOD	500
263	CEILING	500
264	FLOORING	500
265	WALLS	500
266	DOORS	500
267	WINDOWS	500
268	ROOFING	500
269	MECHANICAL	500
270	ELECTRICAL	500
271	PLUMBING	500
272	PAINT	500
273	GLASS	500
274	IRONWORK	500
275	CONCRETE	500
276	STEEL	500
277	WOOD	500
278	CEILING	500
279	FLOORING	500
280	WALLS	500
281	DOORS	500
282	WINDOWS	500
283	ROOFING	500
284	MECHANICAL	500
285	ELECTRICAL	500
286	PLUMBING	500
287	PAINT	500
288	GLASS	500
289	IRONWORK	500
290	CONCRETE	500
291	STEEL	500
292	WOOD	500
293	CEILING	500
294	FLOORING	500
295	WALLS	500
296	DOORS	500
297	WINDOWS	500
298	ROOFING	500
299	MECHANICAL	500
300	ELECTRICAL	500
301	PLUMBING	500
302	PAINT	500
303	GLASS	500
304	IRONWORK	500
305	CONCRETE	500
306	STEEL	500
307	WOOD	500
308	CEILING	500
309	FLOORING	500
310	WALLS	500
311	DOORS	500
312	WINDOWS	500
313	ROOFING	500
314	MECHANICAL	500
315	ELECTRICAL	500
316	PLUMBING	500
317	PAINT	500
318	GLASS	500
319	IRONWORK	500
320	CONCRETE	500
321	STEEL	500
322	WOOD	500
323	CEILING	500
324	FLOORING	500
325	WALLS	500
326	DOORS	500
327	WINDOWS	500
328	ROOFING	500
329	MECHANICAL	500
330	ELECTRICAL	500
331	PLUMBING	500
332	PAINT	500
333	GLASS	500
334	IRONWORK	500
335	CONCRETE	500
336	STEEL	500
337	WOOD	500
338	CEILING	500
339	FLOORING	500
340	WALLS	500
341	DOORS	500
342	WINDOWS	500
343	ROOFING	500
344	MECHANICAL	500
345	ELECTRICAL	500
346	PLUMBING	500
347	PAINT	500
348	GLASS	500
349	IRONWORK	500
350	CONCRETE	500
351	STEEL	500
352	WOOD	500
353	CEILING	500
354	FLOORING	500
355	WALLS	500
356	DOORS	500
357	WINDOWS	500
358	ROOFING	500
359	MECHANICAL	500
360	ELECTRICAL	500
361	PLUMBING	500
362	PAINT	500
363	GLASS	500
364	IRONWORK	500
365	CONCRETE	500
366	STEEL	500
367	WOOD	500
368	CEILING	500
369	FLOORING	500
370	WALLS	500
371	DOORS	500
372	WINDOWS	500
373	ROOFING	500
374	MECHANICAL	500
375	ELECTRICAL	500
376	PLUMBING	500
377	PAINT	500
378	GLASS	500
379	IRONWORK	500
380	CONCRETE	500
381	STEEL	500
382	WOOD	500
383	CEILING	500
384	FLOORING	500
385	WALLS	500
386	DOORS	500
387	WINDOWS	500
388	ROOFING	500
389	MECHANICAL	500
390	ELECTRICAL	500
391	PLUMBING	500
392	PAINT	500
393	GLASS	500
394	IRONWORK	500
395	CONCRETE	500
396	STEEL	500
397	WOOD	500
398	CEILING	500
399	FLOORING	500
400	WALLS	500
401	DOORS	500
402	WINDOWS	500
403	ROOFING	500
404	MECHANICAL	500
405	ELECTRICAL	500
406	PLUMBING	500
407	PAINT	500
408	GLASS	500
409	IRONWORK	500
410	CONCRETE	500
411	STEEL	500
412	WOOD	500
413	CEILING	500
414	FLOORING	500
415	WALLS	500
416	DOORS	500
417	WINDOWS	500
418	ROOFING	500
419	MECHANICAL	500
420	ELECTRICAL	500
421	PLUMBING	500
422	PAINT	500
423	GLASS	500
424	IRONWORK	500
425	CONCRETE	500