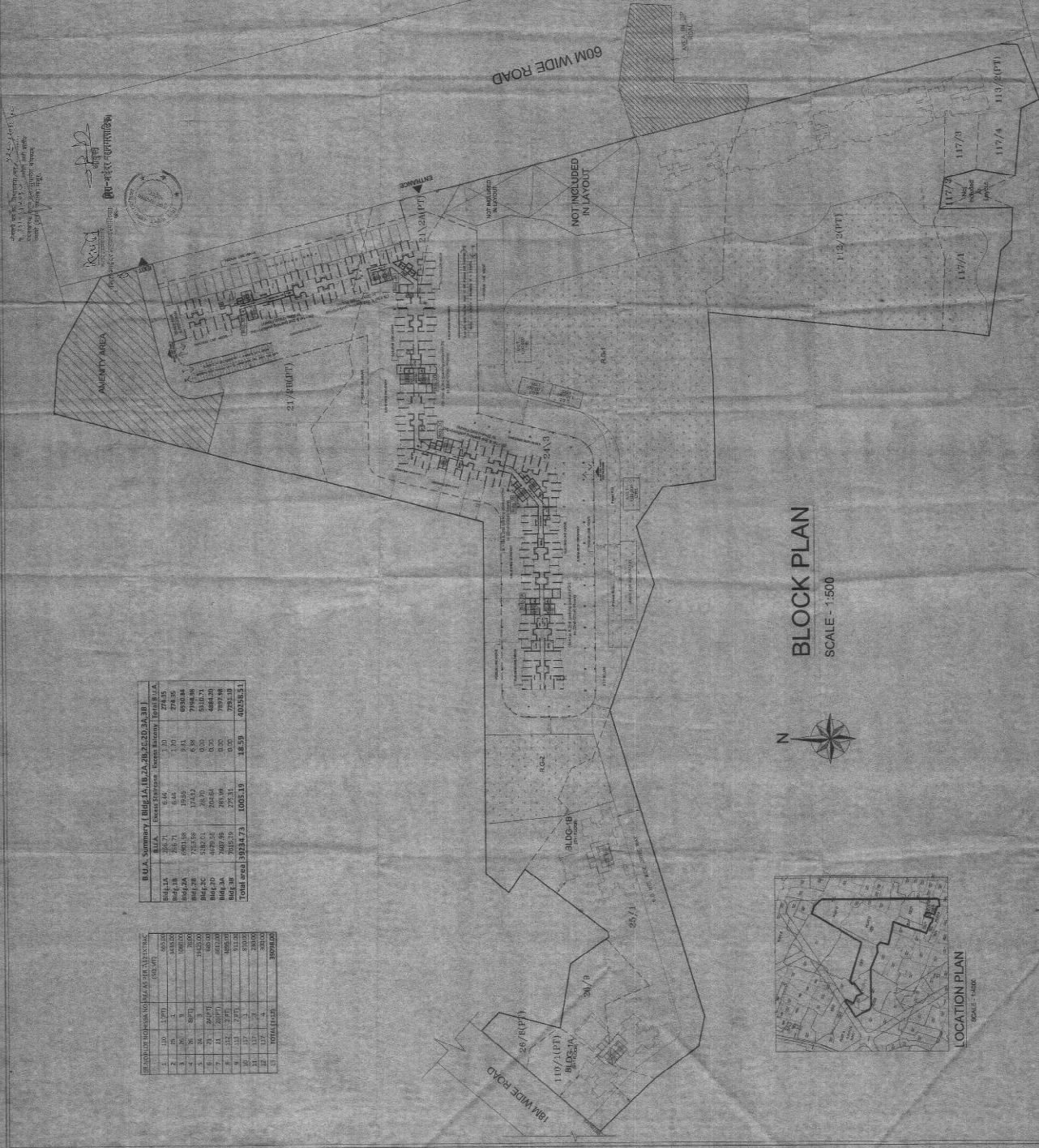


STAMP OF APPROVAL OF PLAN (16)

COPIERS OF SHEET
 BLOCK PLAN LOCATION OF THE PROPOSED
 BUILDING SUMMARY

NO.	DESCRIPTION	NO. OF COPIES
1	FOR THE ARCHITECT	1
2	FOR THE CIVIL ENGINEER	1
3	FOR THE ELECTRICAL ENGINEER	1
4	FOR THE MECHANICAL ENGINEER	1
5	FOR THE STRUCTURAL ENGINEER	1
6	FOR THE SANITARY ENGINEER	1
7	FOR THE LANDSCAPE ARCHITECT	1
8	FOR THE CIVIL ENGINEER (WATER SUPPLY)	1
9	FOR THE CIVIL ENGINEER (SEWERAGE)	1
10	FOR THE CIVIL ENGINEER (DRAINAGE)	1
11	FOR THE CIVIL ENGINEER (Irrigation)	1
12	FOR THE CIVIL ENGINEER (Roads)	1
13	FOR THE CIVIL ENGINEER (Canals)	1
14	FOR THE CIVIL ENGINEER (Ports)	1
15	FOR THE CIVIL ENGINEER (Harbours)	1
16	FOR THE CIVIL ENGINEER (Docks)	1
17	FOR THE CIVIL ENGINEER (Piers)	1
18	FOR THE CIVIL ENGINEER (Quays)	1
19	FOR THE CIVIL ENGINEER (Wharves)	1
20	FOR THE CIVIL ENGINEER (Warehouses)	1
21	FOR THE CIVIL ENGINEER (Sheds)	1
22	FOR THE CIVIL ENGINEER (Stables)	1
23	FOR THE CIVIL ENGINEER (Barns)	1
24	FOR THE CIVIL ENGINEER (Houses)	1
25	FOR THE CIVIL ENGINEER (Offices)	1
26	FOR THE CIVIL ENGINEER (Factories)	1
27	FOR THE CIVIL ENGINEER (Mills)	1
28	FOR THE CIVIL ENGINEER (Lighthouses)	1
29	FOR THE CIVIL ENGINEER (Beacons)	1
30	FOR THE CIVIL ENGINEER (Towers)	1
31	FOR THE CIVIL ENGINEER (Castles)	1
32	FOR THE CIVIL ENGINEER (Fortifications)	1
33	FOR THE CIVIL ENGINEER (Barracks)	1
34	FOR THE CIVIL ENGINEER (Casemates)	1
35	FOR THE CIVIL ENGINEER (Magazines)	1
36	FOR THE CIVIL ENGINEER (Arsenals)	1
37	FOR THE CIVIL ENGINEER (Ammunition)	1
38	FOR THE CIVIL ENGINEER (Stores)	1
39	FOR THE CIVIL ENGINEER (Hospitals)	1
40	FOR THE CIVIL ENGINEER (Prisons)	1
41	FOR THE CIVIL ENGINEER (Jails)	1
42	FOR THE CIVIL ENGINEER (Courts)	1
43	FOR THE CIVIL ENGINEER (Schools)	1
44	FOR THE CIVIL ENGINEER (Universities)	1
45	FOR THE CIVIL ENGINEER (Colleges)	1
46	FOR THE CIVIL ENGINEER (Halls)	1
47	FOR THE CIVIL ENGINEER (Theatres)	1
48	FOR THE CIVIL ENGINEER (Cinemas)	1
49	FOR THE CIVIL ENGINEER (Stadiums)	1
50	FOR THE CIVIL ENGINEER (Sports Grounds)	1
51	FOR THE CIVIL ENGINEER (Clubs)	1
52	FOR THE CIVIL ENGINEER (Public Houses)	1
53	FOR THE CIVIL ENGINEER (Restaurants)	1
54	FOR THE CIVIL ENGINEER (Hotels)	1
55	FOR THE CIVIL ENGINEER (Guest Houses)	1
56	FOR THE CIVIL ENGINEER (Bungalows)	1
57	FOR THE CIVIL ENGINEER (Villas)	1
58	FOR THE CIVIL ENGINEER (Cottages)	1
59	FOR THE CIVIL ENGINEER (Houses with Cottages)	1
60	FOR THE CIVIL ENGINEER (Farmhouses)	1
61	FOR THE CIVIL ENGINEER (Manor Houses)	1
62	FOR THE CIVIL ENGINEER (Castles)	1
63	FOR THE CIVIL ENGINEER (Palaces)	1
64	FOR THE CIVIL ENGINEER (Palaces)	1
65	FOR THE CIVIL ENGINEER (Palaces)	1
66	FOR THE CIVIL ENGINEER (Palaces)	1
67	FOR THE CIVIL ENGINEER (Palaces)	1
68	FOR THE CIVIL ENGINEER (Palaces)	1
69	FOR THE CIVIL ENGINEER (Palaces)	1
70	FOR THE CIVIL ENGINEER (Palaces)	1
71	FOR THE CIVIL ENGINEER (Palaces)	1
72	FOR THE CIVIL ENGINEER (Palaces)	1
73	FOR THE CIVIL ENGINEER (Palaces)	1
74	FOR THE CIVIL ENGINEER (Palaces)	1
75	FOR THE CIVIL ENGINEER (Palaces)	1
76	FOR THE CIVIL ENGINEER (Palaces)	1
77	FOR THE CIVIL ENGINEER (Palaces)	1
78	FOR THE CIVIL ENGINEER (Palaces)	1
79	FOR THE CIVIL ENGINEER (Palaces)	1
80	FOR THE CIVIL ENGINEER (Palaces)	1
81	FOR THE CIVIL ENGINEER (Palaces)	1
82	FOR THE CIVIL ENGINEER (Palaces)	1
83	FOR THE CIVIL ENGINEER (Palaces)	1
84	FOR THE CIVIL ENGINEER (Palaces)	1
85	FOR THE CIVIL ENGINEER (Palaces)	1
86	FOR THE CIVIL ENGINEER (Palaces)	1
87	FOR THE CIVIL ENGINEER (Palaces)	1
88	FOR THE CIVIL ENGINEER (Palaces)	1
89	FOR THE CIVIL ENGINEER (Palaces)	1
90	FOR THE CIVIL ENGINEER (Palaces)	1
91	FOR THE CIVIL ENGINEER (Palaces)	1
92	FOR THE CIVIL ENGINEER (Palaces)	1
93	FOR THE CIVIL ENGINEER (Palaces)	1
94	FOR THE CIVIL ENGINEER (Palaces)	1
95	FOR THE CIVIL ENGINEER (Palaces)	1
96	FOR THE CIVIL ENGINEER (Palaces)	1
97	FOR THE CIVIL ENGINEER (Palaces)	1
98	FOR THE CIVIL ENGINEER (Palaces)	1
99	FOR THE CIVIL ENGINEER (Palaces)	1
100	FOR THE CIVIL ENGINEER (Palaces)	1

APPROVED BY: *[Signature]*
 PROJECT: *[Project Name]*
 PREPARED BY: *[Name]*
 SCALE: 1:500
 DATE: *[Date]*



B.U.A. Summary (Block 1A, 1B, 2A, 2B, 2C, 2D, 2E, 2F, 2G, 2H)

Block	Area (sq. m)	Volume (cu. m)	Height (m)
Block 1A	1000	10000	10
Block 1B	1000	10000	10
Block 2A	1000	10000	10
Block 2B	1000	10000	10
Block 2C	1000	10000	10
Block 2D	1000	10000	10
Block 2E	1000	10000	10
Block 2F	1000	10000	10
Block 2G	1000	10000	10
Block 2H	1000	10000	10
Total	8000	80000	10

Summary of Block Areas

Block	Area (sq. m)
Block 1A	1000
Block 1B	1000
Block 2A	1000
Block 2B	1000
Block 2C	1000
Block 2D	1000
Block 2E	1000
Block 2F	1000
Block 2G	1000
Block 2H	1000
Total	8000

BLOCK PLAN
 SCALE - 1:500



LOCATION PLAN
 SCALE - 1:400