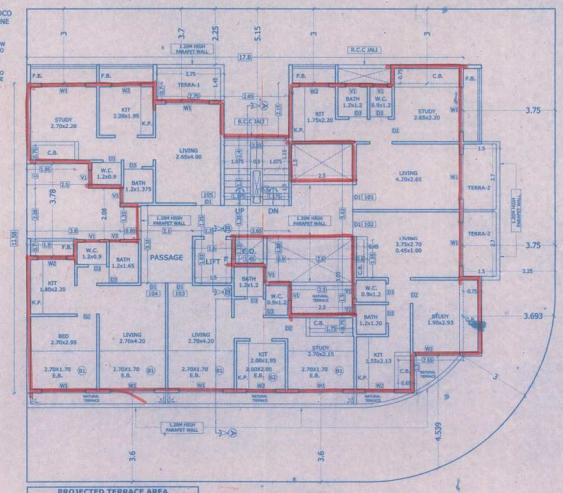
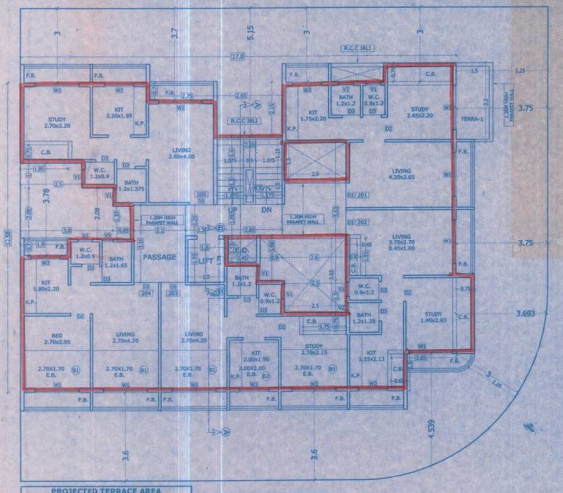


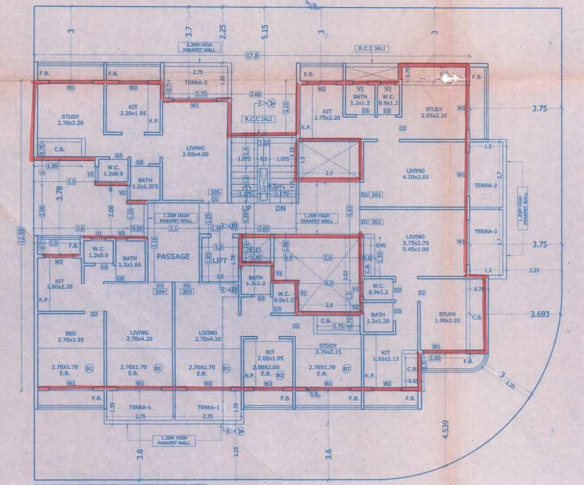
15M WIDE ROAD  
GROUND FLOOR



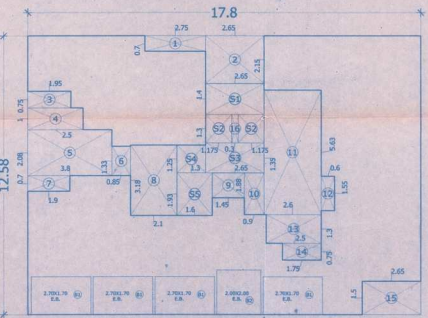
1ST FLOOR



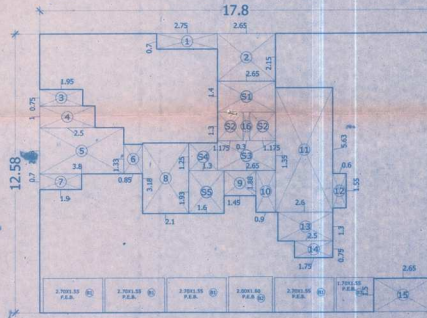
2ND FLOOR



3RD FLOOR



AREA DIAGRAM OF 1ST TO 3RD FLOOR

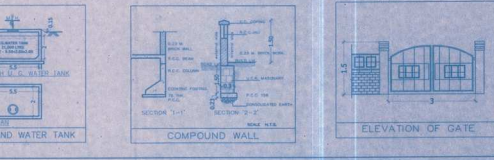


AREA DIAGRAM OF 4TH FLOOR

1ST TO 3RD FLOOR AREA CALCULATION	
<b>AREA OF BLOCK</b>	<b>BALCONY DEDUCTIONS</b>
1   17.800 x 12.580 x 3   = 223.924 M <sup>2</sup>	B1   2.700 x 1.200 x 4   = 18.360 M <sup>2</sup>
	B2   2.000 x 1.200 x 1   = 4.000 M <sup>2</sup>
	<b>TOTAL BALCONY</b>   22.360 M <sup>2</sup>
<b>DEDUCTIONS</b>	<b>STAIR CASE AREA</b>
1   2.750 x 0.700 x 1   = 1.925 M <sup>2</sup>	S1   2.650 x 1.400 x 1   = 3.710 M <sup>2</sup>
2   2.650 x 1.150 x 1   = 5.998 M <sup>2</sup>	S2   1.175 x 1.300 x 2   = 3.053 M <sup>2</sup>
3   1.950 x 0.750 x 1   = 1.463 M <sup>2</sup>	S3   2.450 x 1.350 x 1   = 3.308 M <sup>2</sup>
4   2.500 x 1.000 x 1   = 2.500 M <sup>2</sup>	S4   3.000 x 1.250 x 1   = 3.750 M <sup>2</sup>
5   3.800 x 2.000 x 1   = 7.600 M <sup>2</sup>	S5   1.600 x 1.920 x 1   = 3.072 M <sup>2</sup>
6   0.850 x 1.330 x 1   = 1.131 M <sup>2</sup>	<b>TOTAL AREA</b>   13.056 M <sup>2</sup>
7   1.900 x 0.700 x 1   = 1.330 M <sup>2</sup>	<b>GROSS AREA</b>
8   2.100 x 2.100 x 1   = 4.410 M <sup>2</sup>	223.924   58.530   = 167.468 M <sup>2</sup>
9   1.400 x 1.130 x 1   = 1.582 M <sup>2</sup>	<b>15% PERMISSIBLE BALCONY</b>
10   1.900 x 1.880 x 1   = 3.572 M <sup>2</sup>	167.468 x 15 / 100 = 25.120 M <sup>2</sup>
11   2.600 x 5.920 x 1   = 15.392 M <sup>2</sup>	<b>BUILT UP AREA FOR FSI</b>
12   0.600 x 1.550 x 1   = 0.930 M <sup>2</sup>	167.468 - 25.120 - 25.120 = 117.228 M <sup>2</sup>
13   2.500 x 1.300 x 1   = 3.250 M <sup>2</sup>	<b>TOTAL DEDUCTION</b>   36.456 M <sup>2</sup>
14   1.250 x 0.750 x 1   = 0.938 M <sup>2</sup>	<b>BUILT UP AREA</b>   130.568 M <sup>2</sup>
15   2.650 x 1.500 x 1   = 3.975 M <sup>2</sup>	
16   0.300 x 1.300 x 1   = 0.390 M <sup>2</sup>	
<b>TOTAL DEDUCTION</b>   36.456 M <sup>2</sup>	
<b>BUILT UP AREA</b>   130.568 M <sup>2</sup>	

4TH FLOOR AREA CALCULATION	
<b>AREA OF BLOCK</b>	<b>BALCONY DEDUCTIONS</b>
1   17.800 x 12.580 x 1   = 223.924 M <sup>2</sup>	B1   2.700 x 1.200 x 4   = 18.360 M <sup>2</sup>
	B2   2.000 x 1.200 x 1   = 4.000 M <sup>2</sup>
	<b>TOTAL BALCONY</b>   22.360 M <sup>2</sup>
<b>DEDUCTIONS</b>	<b>STAIR CASE AREA</b>
1   2.750 x 0.700 x 1   = 1.925 M <sup>2</sup>	S1   2.650 x 1.400 x 1   = 3.710 M <sup>2</sup>
2   2.650 x 1.150 x 1   = 5.998 M <sup>2</sup>	S2   1.175 x 1.300 x 2   = 3.053 M <sup>2</sup>
3   1.950 x 0.750 x 1   = 1.463 M <sup>2</sup>	S3   2.450 x 1.350 x 1   = 3.308 M <sup>2</sup>
4   2.500 x 1.000 x 1   = 2.500 M <sup>2</sup>	S4   3.000 x 1.250 x 1   = 3.750 M <sup>2</sup>
5   3.800 x 2.000 x 1   = 7.600 M <sup>2</sup>	S5   1.600 x 1.920 x 1   = 3.072 M <sup>2</sup>
6   0.850 x 1.330 x 1   = 1.131 M <sup>2</sup>	<b>TOTAL AREA</b>   15.056 M <sup>2</sup>
7   1.900 x 0.700 x 1   = 1.330 M <sup>2</sup>	<b>GROSS AREA</b>
8   2.100 x 2.100 x 1   = 4.410 M <sup>2</sup>	223.924   58.530   = 167.468 M <sup>2</sup>
9   1.400 x 1.130 x 1   = 1.582 M <sup>2</sup>	<b>15% PERMISSIBLE BALCONY</b>
10   1.900 x 1.880 x 1   = 3.572 M <sup>2</sup>	167.468 x 15 / 100 = 25.120 M <sup>2</sup>
11   2.600 x 5.920 x 1   = 15.392 M <sup>2</sup>	<b>BUILT UP AREA FOR FSI</b>
12   0.600 x 1.550 x 1   = 0.930 M <sup>2</sup>	167.468 - 25.120 - 25.120 = 117.228 M <sup>2</sup>
13   2.500 x 1.300 x 1   = 3.250 M <sup>2</sup>	<b>TOTAL DEDUCTION</b>   36.456 M <sup>2</sup>
14   1.250 x 0.750 x 1   = 0.938 M <sup>2</sup>	<b>BUILT UP AREA</b>   130.568 M <sup>2</sup>
15   2.650 x 1.500 x 1   = 3.975 M <sup>2</sup>	
16   0.300 x 1.300 x 1   = 0.390 M <sup>2</sup>	
<b>TOTAL DEDUCTION</b>   36.456 M <sup>2</sup>	
<b>BUILT UP AREA</b>   130.568 M <sup>2</sup>	

GROUND FLOOR AREA CALCULATION (COMM.)	
<b>AREA OF BLOCK</b>	<b>GROSS AREA</b>
1   18.500 x 19.180 x 1   = 354.770 M <sup>2</sup>	18.500 x 19.180 = 354.770 M <sup>2</sup>
<b>DEDUCTIONS</b>	<b>15% PERMISSIBLE BALCONY</b>
1   1.400 x 1.000 x 1   = 1.400 M <sup>2</sup>	354.770 x 15 / 100 = 53.216 M <sup>2</sup>
2   1.200 x 1.000 x 1   = 1.200 M <sup>2</sup>	<b>BUILT UP AREA FOR FSI</b>
3   1.000 x 1.000 x 1   = 1.000 M <sup>2</sup>	354.770 - 53.216 - 53.216 = 248.338 M <sup>2</sup>
4   1.000 x 1.000 x 1   = 1.000 M <sup>2</sup>	<b>TOTAL DEDUCTION</b>   4.600 M <sup>2</sup>
5   1.000 x 1.000 x 1   = 1.000 M <sup>2</sup>	<b>BUILT UP AREA</b>   26.785 M <sup>2</sup>
6   1.000 x 1.000 x 1   = 1.000 M <sup>2</sup>	<b>TOTAL BALCONY</b>   13.180 M <sup>2</sup>
<b>TOTAL BALCONY</b>   13.180 M <sup>2</sup>	<b>BUILT UP AREA</b>   130.568 M <sup>2</sup>



SEAL & STAMP OF APPROVAL

APPROVED SUBJECT TO CONDITIONS MENTIONED IN THIS OFFICE LETTER NO. CIDDD / (B.P.) / 190 DATED 19 AUG 2013  
 Additional Town Planning Officer, Rajgad Bhavan, 4th Floor, Sector - 4, Sector - 11, C.B.D.

GROUND TO 3RD FLOOR	
1. AREA STATEMENT	SQ. M.
1. AREA OF PLOT	399,600
2. PERMISSIBLE F.S.I.	1,900
3. PERMISSIBLE BUA	599,400
4. PROPOSED BUA	599,052
5. GROUND FLOOR (COMM.)	26,785
6. FIRST FLOOR	130,568
7. SECOND FLOOR	130,568
8. THIRD FLOOR	130,568
9. TOTAL PROPOSED BUA	599,052
10. BALANCE AREA	0.243
11. F.S.I. CONSUMED	1,499
12. TOTAL PROPOSED COMM. AREA	522,272
13. TOTAL PROPOSED STILL AREA	100,644
14. TOTAL MT. OF BLDG. (AS PER GUDC)	14,950
15. TOTAL MT. OF BLDG. (AVERAGE HEIGHT)	19,250
16. NO. OF LIFT PROVIDED	1
17. NO. OF COMM. UNITS PROVIDED	6
18. NO. OF RES. UNITS PROVIDED	20
19. NO. OF TREE PROP. TO BE PLANTED	4

2. BUA STATEMENT							
FLOOR	B.U.A.	STAR	B.S.	PER. AREA	PRO. AREA	STILL	TOTAL
GROUND	26,785	1,900	31	11,341	12,700	1,041	30,762
1ST	130,568	1,900	31	11,341	12,700	1,041	155,650
2ND	130,568	1,900	31	11,341	12,700	1,041	155,650
3RD	130,568	1,900	31	11,341	12,700	1,041	155,650
<b>TOTAL</b>	<b>599,052</b>	<b>7,600</b>	<b>124</b>	<b>45,364</b>	<b>52,800</b>	<b>4,164</b>	<b>1,027,666</b>

3. BALCONY ENCLOSURE PREMIUM						
FLOOR	NO.	SIZE	NO.	AREA	RATE	AMOUNT
1ST	1	1.200 x 1.000	1	1.200	1,800	2,160
2ND	1	1.200 x 1.000	1	1.200	1,800	2,160
3RD	1	1.200 x 1.000	1	1.200	1,800	2,160
4TH	1	1.200 x 1.000	1	1.200	1,800	2,160
<b>TOTAL</b>	<b>4</b>	<b>4.800</b>	<b>4</b>	<b>4.800</b>	<b>1,800</b>	<b>8,640</b>

4. LIGHT & VENTILATION STATEMENT					
FLOOR	ROOM	REQ. WIN. AREA	PROV. WIN. AREA	TYPE OF WIN	UNIT NO.
1ST	LIVING	11.300	3.750	WT	101
1ST	STUDY	5.820	0.972	WT	101
1ST	KITCHEN	3.800	0.617	WT	101
1ST	BATH	1.440	0.240	WT	101
1ST	W.C.	0.900	0.150	WT	101

5. DOOR / WINDOW SCHEDULE				
DOOR	SIZE	TYPE	WIN. SIZE	TYPE
D1	1.800 x 1.000	SLIP DOOR	1.200 x 1.000	SLIP DOOR
D2	1.800 x 1.000	SLIP DOOR	1.200 x 1.000	SLIP DOOR
D3	1.800 x 1.000	SLIP DOOR	1.200 x 1.000	SLIP DOOR
D4	1.800 x 1.000	SLIP DOOR	1.200 x 1.000	SLIP DOOR
D5	1.800 x 1.000	SLIP DOOR	1.200 x 1.000	SLIP DOOR
D6	1.800 x 1.000	SLIP DOOR	1.200 x 1.000	SLIP DOOR
D7	1.800 x 1.000	SLIP DOOR	1.200 x 1.000	SLIP DOOR
D8	1.800 x 1.000	SLIP DOOR	1.200 x 1.000	SLIP DOOR
D9	1.800 x 1.000	SLIP DOOR	1.200 x 1.000	SLIP DOOR
D10	1.800 x 1.000	SLIP DOOR	1.200 x 1.000	SLIP DOOR
D11	1.800 x 1.000	SLIP DOOR	1.200 x 1.000	SLIP DOOR
D12	1.800 x 1.000	SLIP DOOR	1.200 x 1.000	SLIP DOOR
D13	1.800 x 1.000	SLIP DOOR	1.200 x 1.000	SLIP DOOR
D14	1.800 x 1.000	SLIP DOOR	1.200 x 1.000	SLIP DOOR
D15	1.800 x 1.000	SLIP DOOR	1.200 x 1.000	SLIP DOOR
D16	1.800 x 1.000	SLIP DOOR	1.200 x 1.000	SLIP DOOR
D17	1.800 x 1.000	SLIP DOOR	1.200 x 1.000	SLIP DOOR
D18	1.800 x 1.000	SLIP DOOR	1.200 x 1.000	SLIP DOOR
D19	1.800 x 1.000	SLIP DOOR	1.200 x 1.000	SLIP DOOR
D20	1.800 x 1.000	SLIP DOOR	1.200 x 1.000	SLIP DOOR
D21	1.800 x 1.000	SLIP DOOR	1.200 x 1.000	SLIP DOOR
D22	1.800 x 1.000	SLIP DOOR	1.200 x 1.000	SLIP DOOR
D23	1.800 x 1.000	SLIP DOOR	1.200 x 1.000	SLIP DOOR
D24	1.800 x 1.000	SLIP DOOR	1.200 x 1.000	SLIP DOOR
D25	1.800 x 1.000	SLIP DOOR	1.200 x 1.000	SLIP DOOR
D26	1.800 x 1.000	SLIP DOOR	1.200 x 1.000	SLIP DOOR
D27	1.800 x 1.000	SLIP DOOR	1.200 x 1.000	SLIP DOOR
D28	1.800 x 1.000	SLIP DOOR	1.200 x 1.000	SLIP DOOR
D29	1.800 x 1.000	SLIP DOOR	1.200 x 1.000	SLIP DOOR
D30	1.800 x 1.000	SLIP DOOR	1.200 x 1.000	SLIP DOOR
D31	1.800 x 1.000	SLIP DOOR	1.200 x 1.000	SLIP DOOR
D32	1.800 x 1.000	SLIP DOOR	1.200 x 1.000	SLIP DOOR
D33	1.800 x 1.000	SLIP DOOR	1.200 x 1.000	SLIP DOOR
D34	1.800 x 1.000	SLIP DOOR	1.200 x 1.000	SLIP DOOR
D35	1.800 x 1.000	SLIP DOOR	1.200 x 1.000	SLIP DOOR
D36	1.800 x 1.000	SLIP DOOR	1.200 x 1.000	SLIP DOOR
D37	1.800 x 1.000	SLIP DOOR	1.200 x 1.000	SLIP DOOR
D38	1.800 x 1.000	SLIP DOOR	1.200 x 1.000	SLIP DOOR
D39	1.800 x 1.000	SLIP DOOR	1.200 x 1.000	SLIP DOOR
D40	1.800 x 1.000	SLIP DOOR	1.200 x 1.000	SLIP DOOR
D41	1.800 x 1.000	SLIP DOOR	1.200 x 1.000	SLIP DOOR
D42	1.800 x 1.000	SLIP DOOR	1.200 x 1.000	SLIP DOOR
D43	1.800 x 1.000	SLIP DOOR	1.200 x 1.000	SLIP DOOR
D44	1.800 x 1.000	SLIP DOOR	1.200 x 1.000	SLIP DOOR
D45	1.800 x 1.000	SLIP DOOR	1.200 x 1.000	SLIP DOOR
D46	1.800 x 1.000	SLIP DOOR	1.200 x 1.000	SLIP DOOR
D47	1.800 x 1.000	SLIP DOOR	1.200 x 1.000	SLIP DOOR
D48	1.800 x 1.000	SLIP DOOR	1.200 x 1.000	SLIP DOOR
D49	1.800 x 1.000	SLIP DOOR	1.200 x 1.000	SLIP DOOR
D50	1.800 x 1.000	SLIP DOOR	1.200 x 1.000	SLIP DOOR
D51	1.800 x 1.000	SLIP DOOR	1.200 x 1.000	SLIP DOOR
D52	1.800 x 1.000	SLIP DOOR	1.200 x 1.000	SLIP DOOR
D53	1.800 x 1.000	SLIP DOOR	1.200 x 1.000	SLIP DOOR
D54	1.800 x 1.000	SLIP DOOR	1.200 x 1.000	SLIP DOOR
D55	1.800 x 1.000	SLIP DOOR	1.200 x 1.000	SLIP DOOR
D56	1.800 x 1.000	SLIP DOOR	1.200 x 1.000	SLIP DOOR
D57	1.800 x 1.000	SLIP DOOR	1.200 x 1.000	SLIP DOOR
D58	1.800 x 1.000	SLIP DOOR	1.200 x 1.000	SLIP DOOR
D59	1.800 x 1.000	SLIP DOOR	1.200 x 1.000	SLIP DOOR
D60	1.800 x 1.000	SLIP DOOR	1.200 x 1.000	SLIP DOOR
D61	1.800 x 1.000	SLIP DOOR	1.200 x 1.000	SLIP DOOR
D62	1.800 x 1.000	SLIP DOOR	1.200 x 1.000	SLIP DOOR
D63	1.800 x 1.000	SLIP DOOR	1.200 x 1.000	SLIP DOOR
D64	1.800 x 1.000	SLIP DOOR	1.200 x 1.000	SLIP DOOR
D65	1.800 x 1.000	SLIP DOOR	1.200 x 1.000	SLIP DOOR
D66	1.800 x 1.000	SLIP DOOR	1.200 x 1.000	SLIP DOOR
D67	1.800 x 1.000	SLIP DOOR	1.200 x 1.000	SLIP DOOR
D68	1.800 x 1.000	SLIP DOOR	1.200 x 1.000	SLIP DOOR
D69	1.800 x 1.000	SLIP DOOR	1.200 x 1.000	SLIP DOOR
D70	1.800 x 1.000	SLIP DOOR	1.200 x 1.000	SLIP DOOR
D71	1.8			