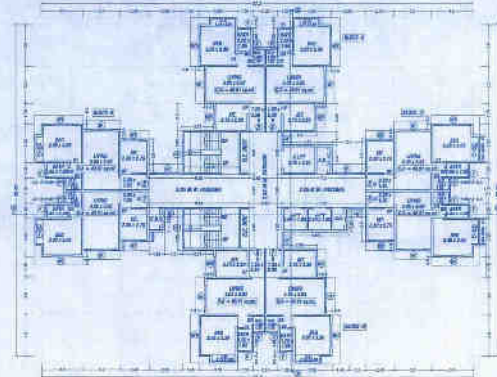
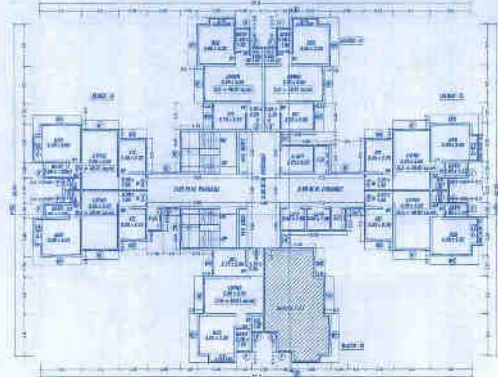


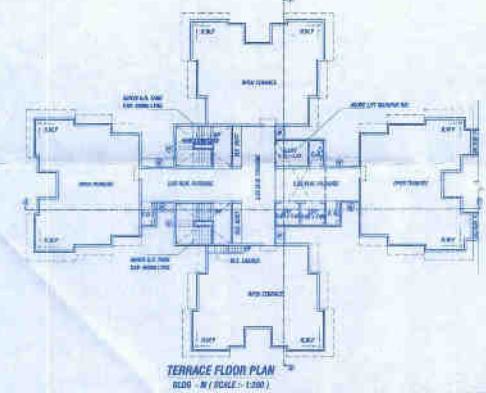
STILT FLOOR PLAN  
BLDG - M (SCALE - 1:500)



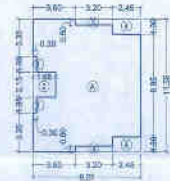
TYPICAL FLOOR PLAN  
BLDG - M (SCALE - 1:500)



TYPICAL FLOOR PLAN  
BLDG - M (SCALE - 1:500)



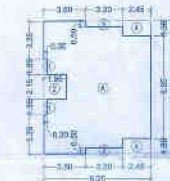
TERRACE FLOOR PLAN  
BLDG - M (SCALE - 1:500)



AREA LINE DIAGRAM  
BLDG - M BLOCK - A, B & C (SCALE - 1:500)

**BUILT UP AREA CALCULATION**  
TYPICAL 1st To 7th, 8th To 12th & 14th To 17th FLOOR  
BLOCK - A, B & C

A	8.25 x 11.35 x 1 No.	= 93.83 sq.m.
<b>TOTAL ADDITION</b> = 93.83 sq.m. X		
<b>DEDUCTIONS</b>		
1	0.35 x 1.35 x 2 Nos.	= 0.94 sq.m.
2	1.45 x 2.15 x 1 No.	= 3.11 sq.m.
3	2.25 x 4.45 x 2 Nos.	= 20.03 sq.m.
4	1.45 x 1.35 x 2 Nos.	= 3.92 sq.m.
<b>TOTAL DEDUCTIONS</b> = 17.97 sq.m. Y		
<b>TOTAL AREA (X - Y)</b> = 82.29 sq.m. Z		
<b>22.55 x 4 Nos.</b> = 308.94 sq.m.		



AREA LINE DIAGRAM  
BLDG - M BLOCK - A, B & C (SCALE - 1:500)

**BUILT UP AREA CALCULATION**  
TYPICAL 8th, 12th & 14th FLOOR  
BLOCK - A, B & C

A	5.25 x 3.15 x 1 No.	= 16.54 sq.m.
<b>TOTAL ADDITION</b> = 16.54 sq.m. X		
<b>DEDUCTIONS</b>		
1	1.35 x 1.15 x 1 No.	= 1.55 sq.m.
2	1.45 x 2.75 x 1 No.	= 4.00 sq.m.
3	1.55 x 1.35 x 2 Nos.	= 4.20 sq.m.
4	2.45 x 1.35 x 2 Nos.	= 6.62 sq.m.
<b>TOTAL DEDUCTIONS</b> = 16.37 sq.m. Y		
<b>TOTAL AREA (X - Y)</b> = 0.29 sq.m. Z		
<b>22.25 x 4 Nos.</b> = 308.94 sq.m.		



LIFT AREA DIAG.  
(SCALE - 1:500)

**LIFT AREA CALCULATION**  
STILT FLOOR

1	3.15 x 2.15 x 1 No.	= 6.77 sq.m.
2	4.25 x 2.25 x 1 No.	= 9.56 sq.m.
<b>TOTAL AREA</b> = 17.33 sq.m.		



AREA LINE DIAGRAM  
BLDG - M BLOCK - D (SCALE - 1:500)

**BUILT UP AREA CALCULATION**  
TYPICAL 13th & 14th FLOOR  
BLOCK - D

A	3.15 x 4.25 x 1 No.	= 13.39 sq.m.
<b>TOTAL ADDITION</b> = 13.39 sq.m. X		
<b>DEDUCTIONS</b>		
1	1.15 x 0.35 x 1 No.	= 0.40 sq.m.
2	1.15 x 1.15 x 1 No.	= 1.32 sq.m.
3	1.15 x 2.15 x 1 No.	= 2.47 sq.m.
4	1.15 x 1.35 x 1 No.	= 1.55 sq.m.
<b>TOTAL DEDUCTIONS</b> = 5.74 sq.m. Y		
<b>TOTAL AREA (X - Y)</b> = 7.65 sq.m. Z		
<b>22.25 x 4 Nos.</b> = 308.94 sq.m.		



AREA LINE DIAGRAM  
TYPICAL 1st To 7th FLOOR  
BLDG - M (SCALE - 1:500)

**FINE STAIRCASE AREA CALCULATION**  
TYPICAL 1st To 7th FLOOR

30	1.70 x 2.35 x 1 No.	= 3.99 sq.m.
<b>TOTAL AREA</b> = 3.99 sq.m.		

**STAIRCASE AREA CALCULATION**  
TYPICAL 1st To 14th FLOOR

30	4.75 x 3.30 x 1 No.	= 15.68 sq.m.
<b>TOTAL AREA</b> = 15.68 sq.m.		

**PASSAGE AREA CALCULATION**  
TYPICAL 1st To 14th FLOOR

30	1.45 x 2.35 x 1 No.	= 3.40 sq.m.
31	2.25 x 1.15 x 1 No.	= 2.59 sq.m.
32	1.70 x 2.15 x 1 No.	= 3.66 sq.m.
<b>TOTAL AREA</b> = 9.65 sq.m.		

**PARKING STATEMENT (BLDG - M)**  
NO. OF TROCKERS

FLOOR	S.A. (Sq.ft)	S. No. of	Area of	Area of	Total Area
1st	18	18	18	18	36
2nd	18	18	18	18	36
3rd	18	18	18	18	36
4th	18	18	18	18	36
5th	18	18	18	18	36
6th	18	18	18	18	36
7th	18	18	18	18	36
8th	18	18	18	18	36
9th	18	18	18	18	36
10th	18	18	18	18	36
11th	18	18	18	18	36
12th	18	18	18	18	36
13th	18	18	18	18	36
14th	18	18	18	18	36
15th	18	18	18	18	36
16th	18	18	18	18	36
17th	18	18	18	18	36
18th	18	18	18	18	36
19th	18	18	18	18	36
20th	18	18	18	18	36
21st	18	18	18	18	36
22nd	18	18	18	18	36
23rd	18	18	18	18	36
24th	18	18	18	18	36
25th	18	18	18	18	36
26th	18	18	18	18	36
27th	18	18	18	18	36
28th	18	18	18	18	36
29th	18	18	18	18	36
30th	18	18	18	18	36
31st	18	18	18	18	36
32nd	18	18	18	18	36
33rd	18	18	18	18	36
34th	18	18	18	18	36
35th	18	18	18	18	36
36th	18	18	18	18	36
37th	18	18	18	18	36
38th	18	18	18	18	36
39th	18	18	18	18	36
40th	18	18	18	18	36
41st	18	18	18	18	36
42nd	18	18	18	18	36
43rd	18	18	18	18	36
44th	18	18	18	18	36
45th	18	18	18	18	36
46th	18	18	18	18	36
47th	18	18	18	18	36
48th	18	18	18	18	36
49th	18	18	18	18	36
50th	18	18	18	18	36
51st	18	18	18	18	36
52nd	18	18	18	18	36
53rd	18	18	18	18	36
54th	18	18	18	18	36
55th	18	18	18	18	36
56th	18	18	18	18	36
57th	18	18	18	18	36
58th	18	18	18	18	36
59th	18	18	18	18	36
60th	18	18	18	18	36
61st	18	18	18	18	36
62nd	18	18	18	18	36
63rd	18	18	18	18	36
64th	18	18	18	18	36
65th	18	18	18	18	36
66th	18	18	18	18	36
67th	18	18	18	18	36
68th	18	18	18	18	36
69th	18	18	18	18	36
70th	18	18	18	18	36
71st	18	18	18	18	36
72nd	18	18	18	18	36
73rd	18	18	18	18	36
74th	18	18	18	18	36
75th	18	18	18	18	36
76th	18	18	18	18	36
77th	18	18	18	18	36
78th	18	18	18	18	36
79th	18	18	18	18	36
80th	18	18	18	18	36
81st	18	18	18	18	36
82nd	18	18	18	18	36
83rd	18	18	18	18	36
84th	18	18	18	18	36
85th	18	18	18	18	36
86th	18	18	18	18	36
87th	18	18	18	18	36
88th	18	18	18	18	36
89th	18	18	18	18	36
90th	18	18	18	18	36
91st	18	18	18	18	36
92nd	18	18	18	18	36
93rd	18	18	18	18	36
94th	18	18	18	18	36
95th	18	18	18	18	36
96th	18	18	18	18	36
97th	18	18	18	18	36
98th	18	18	18	18	36
99th	18	18	18	18	36
100th	18	18	18	18	36
101st	18	18	18	18	36
102nd	18	18	18	18	36
103rd	18	18	18	18	36
104th	18	18	18	18	36
105th	18	18	18	18	36
106th	18	18	18	18	36
107th	18	18	18	18	36
108th	18	18	18	18	36
109th	18	18	18	18	36
110th	18	18	18	18	36
111st	18	18	18	18	36
112nd	18	18	18	18	36
113rd	18	18	18	18	36
114th	18	18	18	18	36
115th	18	18	18	18	36
116th	18	18	18	18	36
117th	18	18	18	18	36
118th	18	18	18	18	36
119th	18	18	18	18	36
120th	18	18	18	18	36
121st	18	18	18	18	36
122nd	18	18	18	18	36
123rd	18	18	18	18	36
124th	18	18	18	18	36
125th	18	18	18	18	36
126th	18	18	18	18	36
127th	18	18	18	18	36
128th	18	18	18	18	36
129th	18	18	18	18	36
130th	18	18	18	18	36
131st	18	18	18	18	36
132nd	18	18	18	18	36
133rd	18	18	18	18	36
134th	18	18	18	18	36
135th	18	18	18	18	36
136th	18	18	18	18	36
137th	18	18	18	18	36
138th	18	18	18	18	36
139th	18	18	18	18	36
140th	18	18	18	18	36
141st	18	18	18	18	36
142nd	18	18	18	18	36
143rd	18	18	18	18	36
144th	18	18	18	18	36
145th	18	18	18	18	36
146th	18	18	18	18	36
147th	18	18	18	18	36
148th	18	18	18	18	36
149th	18	18	18	18	36
150th	18	18	18	18	36
151st	18	18	18	18	36
152nd	18	18	18	18	36
153rd	18	18	18	18	36
154th	18	18	18	18	36
155th	18	18	18	18	36
156th	18	18	18	18	36
157th	18	18	18	18	36
158th	18	18	18	18	36
159th	18	18	18	18	36
160th	18	18	18	18	36
161st	18	18	18	18	36
162nd	18	18	18	18	36
163rd	18	18	18	18	36
164th	18	18	18	18	36
165th	18	18	18	18	36
166th	18	18	18	18	36
167th	18	18	18	18	36
168th	18	18	18	18	36
169th	18	18	18	18	36
170th	18	18	18	18	36
171st	18	18	18	18	36
172nd	18	18	18	18	36
173rd	18	18	18	18	36
174th	18	18	18	18	36
175th	18	18	18	18	36
176th	18	18	18	18	36
177th	18	18	18	18	36
178th	18	18	18	18	36
179th	18	18	18	18	36
180th	18	18	18	18	36
181st	18	18	18	18	36
182nd	18	18	18	18	36
183					