

DESCRIPTION OF SHEET  
 BUILDING TYPE : DDA TYPE  
 NO. OF FLOORS : 25 + 23 FLOORS  
 CLUSTER NO.S : CLUSTER 2,27 WING A, B, C, D, E & F  
 CLUSTER 4.01 (A) WING A & B  
 CLUSTER 4.01 (B) WING C & D

GROUND FLOOR PLAN - BUA AREA CALCULATION  
 FIRST FLOOR PLAN - BUA AREA CALCULATION  
 TYPICAL FLOOR PLAN - BUA AREA CALCULATION  
 CARPET AREA STATEMENT & PARKING TABLE

STAMP AND DATE OF APPROVAL OF PLAN

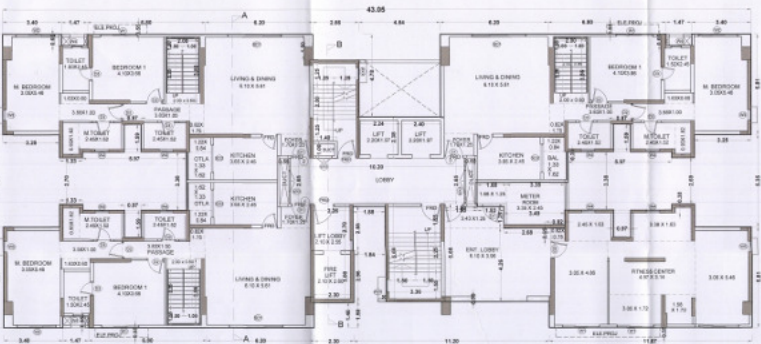


NOTE: ALL DIMENSIONS ARE IN METRE  
 DESCRIPTION OF PROPOSAL & PROPERTY  
 PROPOSED INTEGRATED TOWNSHIP PROJECT AT VILLAGE ANFAL, THANE, NEVANE, KOLE TALUKA, TALUKA & VILLAGE UMRKOL, TALUKA AMBARNATH, DIST THANE.

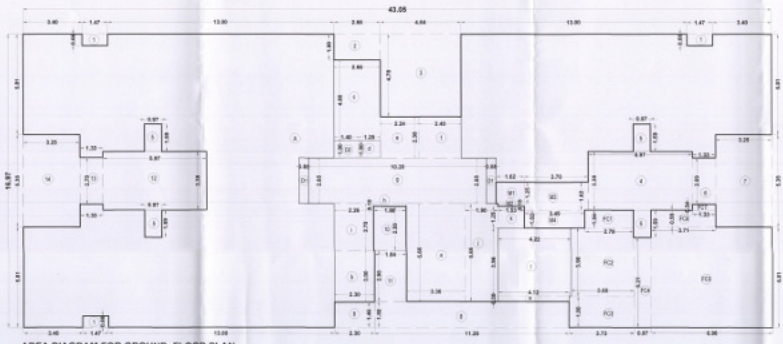
JOB NO. : 2711  
 REVISION NO. : 001  
 SHEET NO. : 001/01  
 DATE : 09/09/2017  
 SCALE : 1:100

NAME & ADDRESS OF OWNER  
 PALAVA OVERSEAS PVT.LTD.  
 412, 4TH FLOOR, 175, VISHWANATH CHAMBER,  
 GANDESI PATEL ROAD, KORNBERN CIRCLE,  
 FORT MUMBAI-400 021.

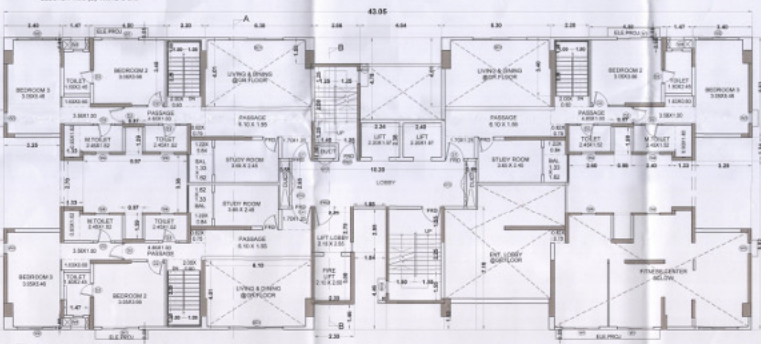
NAME & ADDRESS OF ARCHITECT  
 A & Z LAND DEVELOPMENT SOLUTIONS  
 C/A SHANTI-ANANT D/S  
 209/1, TRINAKR STREET, NEAR ANAND CHIMRAO,  
 THANE-401 303  
 OFFICE: 022-25528555  
 WEBSITE: www.aandzland.com



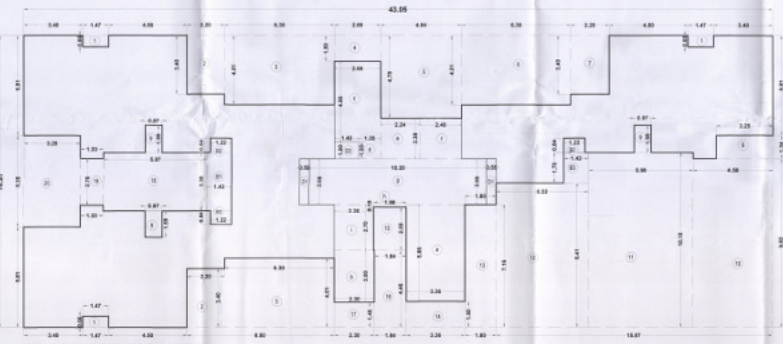
**G** GROUND FLOOR PLAN (Scale: 1:100)  
 CLUSTER 2.07 WING A, B, C, D, E & F  
 CLUSTER 4.01 (A) WING A & B  
 CLUSTER 4.01 (B) WING C & D



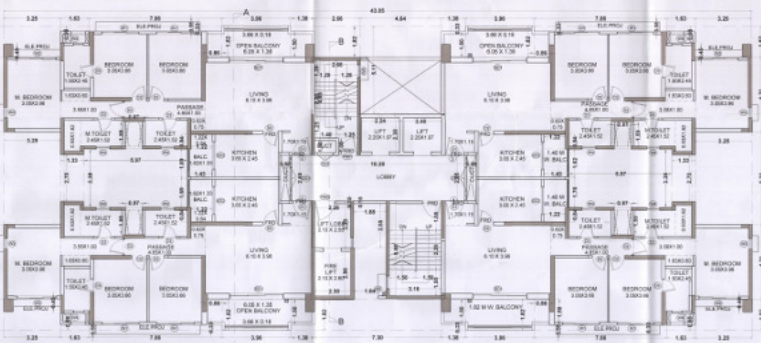
AREA DIAGRAM FOR GROUND FLOOR PLAN (Scale: 1:100)



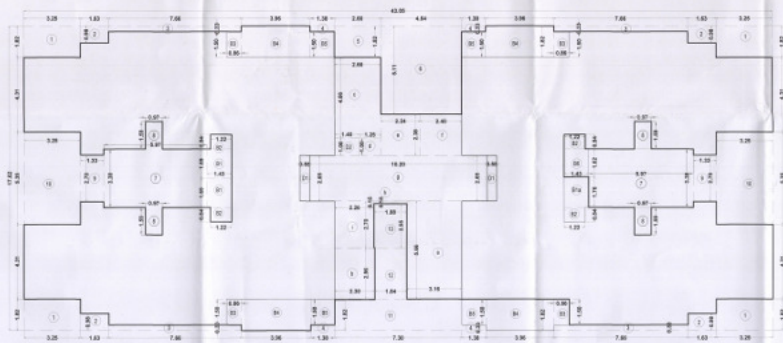
**F** 1ST FLOOR PLAN (Scale: 1:100)  
 CLUSTER 2.07 WING A, B, C, D, E & F  
 CLUSTER 4.01 (A) WING A & B  
 CLUSTER 4.01 (B) WING C & D



AREA DIAGRAM FOR 1ST FLOOR PLAN (Scale: 1:100)



**S** 2ND FLOOR PLAN (Scale: 1:100)  
 CLUSTER 2.07 WING A, B, C, D, E & F  
 CLUSTER 4.01 (A) WING A & B  
 CLUSTER 4.01 (B) WING C & D



AREA DIAGRAM FOR 2ND FLOOR PLAN (Scale: 1:100)

NO. OF ROOMS/CLUSTER

CLUSTER	WING	FLOOR	ROOM NO.	AREA (SQ.M)	NO. OF ROOMS
2.07	A	GF	101	10.00	1
2.07	A	GF	102	10.00	1
2.07	A	GF	103	10.00	1
2.07	A	GF	104	10.00	1
2.07	A	GF	105	10.00	1
2.07	A	GF	106	10.00	1
2.07	A	GF	107	10.00	1
2.07	A	GF	108	10.00	1
2.07	A	GF	109	10.00	1
2.07	A	GF	110	10.00	1
2.07	A	GF	111	10.00	1
2.07	A	GF	112	10.00	1
2.07	A	GF	113	10.00	1
2.07	A	GF	114	10.00	1
2.07	A	GF	115	10.00	1
2.07	A	GF	116	10.00	1
2.07	A	GF	117	10.00	1
2.07	A	GF	118	10.00	1
2.07	A	GF	119	10.00	1
2.07	A	GF	120	10.00	1
2.07	A	GF	121	10.00	1
2.07	A	GF	122	10.00	1
2.07	A	GF	123	10.00	1
2.07	A	GF	124	10.00	1
2.07	A	GF	125	10.00	1
2.07	A	GF	126	10.00	1
2.07	A	GF	127	10.00	1
2.07	A	GF	128	10.00	1
2.07	A	GF	129	10.00	1
2.07	A	GF	130	10.00	1
2.07	A	GF	131	10.00	1
2.07	A	GF	132	10.00	1
2.07	A	GF	133	10.00	1
2.07	A	GF	134	10.00	1
2.07	A	GF	135	10.00	1
2.07	A	GF	136	10.00	1
2.07	A	GF	137	10.00	1
2.07	A	GF	138	10.00	1
2.07	A	GF	139	10.00	1
2.07	A	GF	140	10.00	1
2.07	A	GF	141	10.00	1
2.07	A	GF	142	10.00	1
2.07	A	GF	143	10.00	1
2.07	A	GF	144	10.00	1
2.07	A	GF	145	10.00	1
2.07	A	GF	146	10.00	1
2.07	A	GF	147	10.00	1
2.07	A	GF	148	10.00	1
2.07	A	GF	149	10.00	1
2.07	A	GF	150	10.00	1
2.07	A	GF	151	10.00	1
2.07	A	GF	152	10.00	1
2.07	A	GF	153	10.00	1
2.07	A	GF	154	10.00	1
2.07	A	GF	155	10.00	1
2.07	A	GF	156	10.00	1
2.07	A	GF	157	10.00	1
2.07	A	GF	158	10.00	1
2.07	A	GF	159	10.00	1
2.07	A	GF	160	10.00	1
2.07	A	GF	161	10.00	1
2.07	A	GF	162	10.00	1
2.07	A	GF	163	10.00	1
2.07	A	GF	164	10.00	1
2.07	A	GF	165	10.00	1
2.07	A	GF	166	10.00	1
2.07	A	GF	167	10.00	1
2.07	A	GF	168	10.00	1
2.07	A	GF	169	10.00	1
2.07	A	GF	170	10.00	1
2.07	A	GF	171	10.00	1
2.07	A	GF	172	10.00	1
2.07	A	GF	173	10.00	1
2.07	A	GF	174	10.00	1
2.07	A	GF	175	10.00	1
2.07	A	GF	176	10.00	1
2.07	A	GF	177	10.00	1
2.07	A	GF	178	10.00	1
2.07	A	GF	179	10.00	1
2.07	A	GF	180	10.00	1
2.07	A	GF	181	10.00	1
2.07	A	GF	182	10.00	1
2.07	A	GF	183	10.00	1
2.07	A	GF	184	10.00	1
2.07	A	GF	185	10.00	1
2.07	A	GF	186	10.00	1
2.07	A	GF	187	10.00	1
2.07	A	GF	188	10.00	1
2.07	A	GF	189	10.00	1
2.07	A	GF	190	10.00	1
2.07	A	GF	191	10.00	1
2.07	A	GF	192	10.00	1
2.07	A	GF	193	10.00	1
2.07	A	GF	194	10.00	1
2.07	A	GF	195	10.00	1
2.07	A	GF	196	10.00	1
2.07	A	GF	197	10.00	1
2.07	A	GF	198	10.00	1
2.07	A	GF	199	10.00	1
2.07	A	GF	200	10.00	1
2.07	A	GF	201	10.00	1
2.07	A	GF	202	10.00	1
2.07	A	GF	203	10.00	1
2.07	A	GF	204	10.00	1
2.07	A	GF	205	10.00	1
2.07	A	GF	206	10.00	1
2.07	A	GF	207	10.00	1
2.07	A	GF	208	10.00	1
2.07	A	GF	209	10.00	1
2.07	A	GF	210	10.00	1
2.07	A	GF	211	10.00	1
2.07	A	GF	212	10.00	1
2.07	A	GF	213	10.00	1
2.07	A	GF	214	10.00	1
2.07	A	GF	215	10.00	1
2.07	A	GF	216	10.00	1
2.07	A	GF	217	10.00	1
2.07	A	GF	218	10.00	1
2.07	A	GF	219	10.00	1
2.07	A	GF	220	10.00	1
2.07	A	GF	221	10.00	1
2.07	A	GF	222	10.00	1
2.07	A	GF	223	10.00	1
2.07	A	GF	224	10.00	1
2.07	A	GF	225	10.00	1
2.07	A	GF	226	10.00	1
2.07	A	GF	227	10.00	1
2.07	A	GF	228	10.00	1
2.07	A	GF	229	10.00	1
2.07	A	GF	230	10.00	1
2.07	A	GF	231	10.00	1
2.07	A	GF	232	10.00	1
2.07	A	GF	233	10.00	1
2.07	A	GF	234	10.00	1
2.07	A	GF	235	10.00	1
2.07	A	GF	236	10.00	1
2.07	A	GF	237	10.00	1
2.07	A	GF	238	10.00	1
2.07	A	GF	239	10.00	1
2.07	A	GF	240	10.00	1
2.07	A	GF	241	10.00	1
2.07	A	GF	242	10.00	1
2.07	A	GF	243	10.00	1
2.07	A	GF	244	10.00	1
2.07	A	GF	245	10.00	1
2.07	A	GF	246	10.00	1
2.07	A	GF	247	10.00	1
2.07	A	GF	248	10.00	1
2.07	A	GF	249	10.00	1
2.07	A	GF	250	10.00	1
2.07	A	GF	251	10.00	1
2.07	A	GF	252	10.00	1
2.07	A	GF	253	10.00	1
2.07	A	GF	254	10.00	1
2.07	A	GF	255	10.00	1
2.07	A	GF	256	10.00	1
2.07	A	GF	257	10.00	1
2.07	A	GF	258	10.00	1
2.07	A	GF	259	10.00	1
2.07	A	GF	260	10.00	1
2.07	A	GF	261	10.00	1
2.07	A	GF	262	10.00	1
2.07	A	GF	263	10.00	1
2.07	A	GF	264	10.00	1
2.07	A	GF	265	10.00	1
2.07	A	GF	266	10.00	1
2.07	A	GF	267	10.00	1
2.07	A	GF	268	10.00	1
2.07	A	GF	269	10.00	1
2.07	A	GF	270	10.00	1
2.07	A	GF	271	10.00	1
2.07	A	GF	272	10.00	1
2.07	A	GF	273	10.00	1
2.07	A	GF	274	10.00	1
2.07	A	GF	275	10.00	1
2.07	A	GF	276	10.00	1
2.07	A	GF	277	10.00	1
2.07	A	GF	278	10.00	1
2.07	A	GF	279	10.00	1
2.07	A	GF	280	10.00	1
2.07	A	GF	281	10.00	1
2.07	A	GF	282	10.00	1
2.07	A	GF	283	10.00	1
2.07	A	GF	284	10.00	1
2.07	A	GF	285	10.00	1
2.07	A	GF	286	10.00	1
2.07	A	GF	287	10.00	1
2.07	A	GF	288	10.00	1
2.07	A	GF	289	10.00	1
2.07	A	GF	290	10.00	1
2.07	A	GF	291	10.00	1
2.07	A	GF	292	10.00	1
2.07	A	GF	293	10.00	1
2.07	A	GF	294	10.00	1
2.07	A	GF	295	10.00	1
2.07	A	GF	296	10.00	1
2.07	A	GF	297	10.00	1
2.07	A	GF	298	10.00	1
2.07	A	GF	299	10.00	1
2.07	A	GF	300	10.00	1
2.07	A	GF	301	10.00	1
2.07	A	GF	302	10.00	1
2.07	A	GF	303	10.00	1
2.07	A	GF	304	10.00	1
2.07	A	GF	305	10.00	1
2.07	A	GF	306	10.00	1
2.07	A	GF	307	10.00	1
2.07	A	GF	308	10.00	1
2.07	A	GF	309	10.00	1
2.07	A	GF	310	10.00	1
2.07	A	GF	311	10.00	1
2.07	A	GF	312	10.00	1
2.07	A	GF	313	10.00	1
2.07	A	GF	314	10.00</	