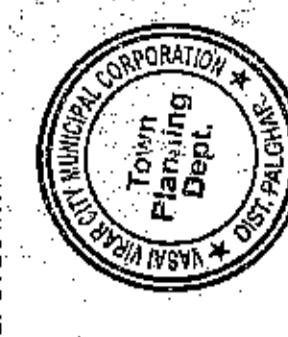


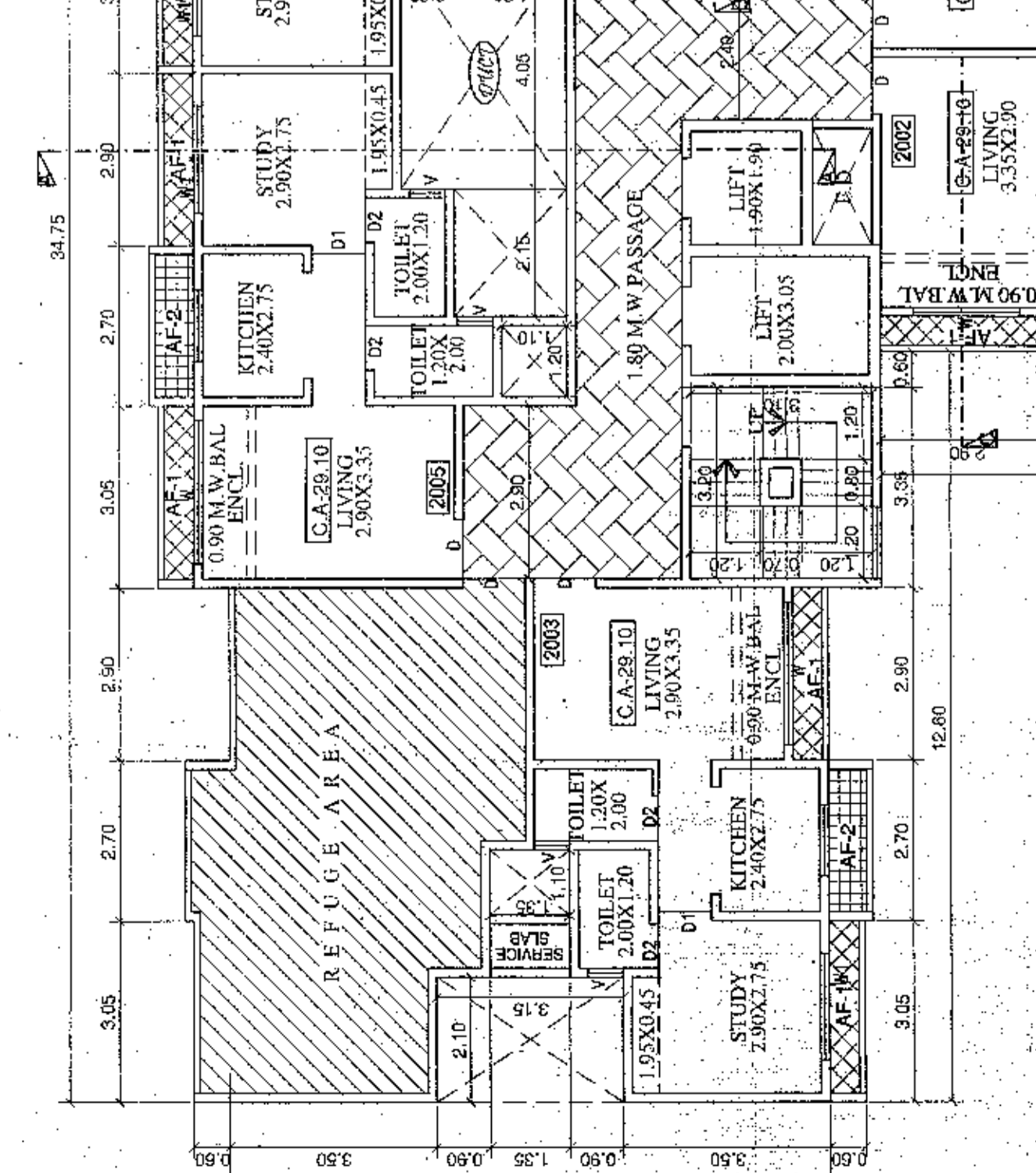
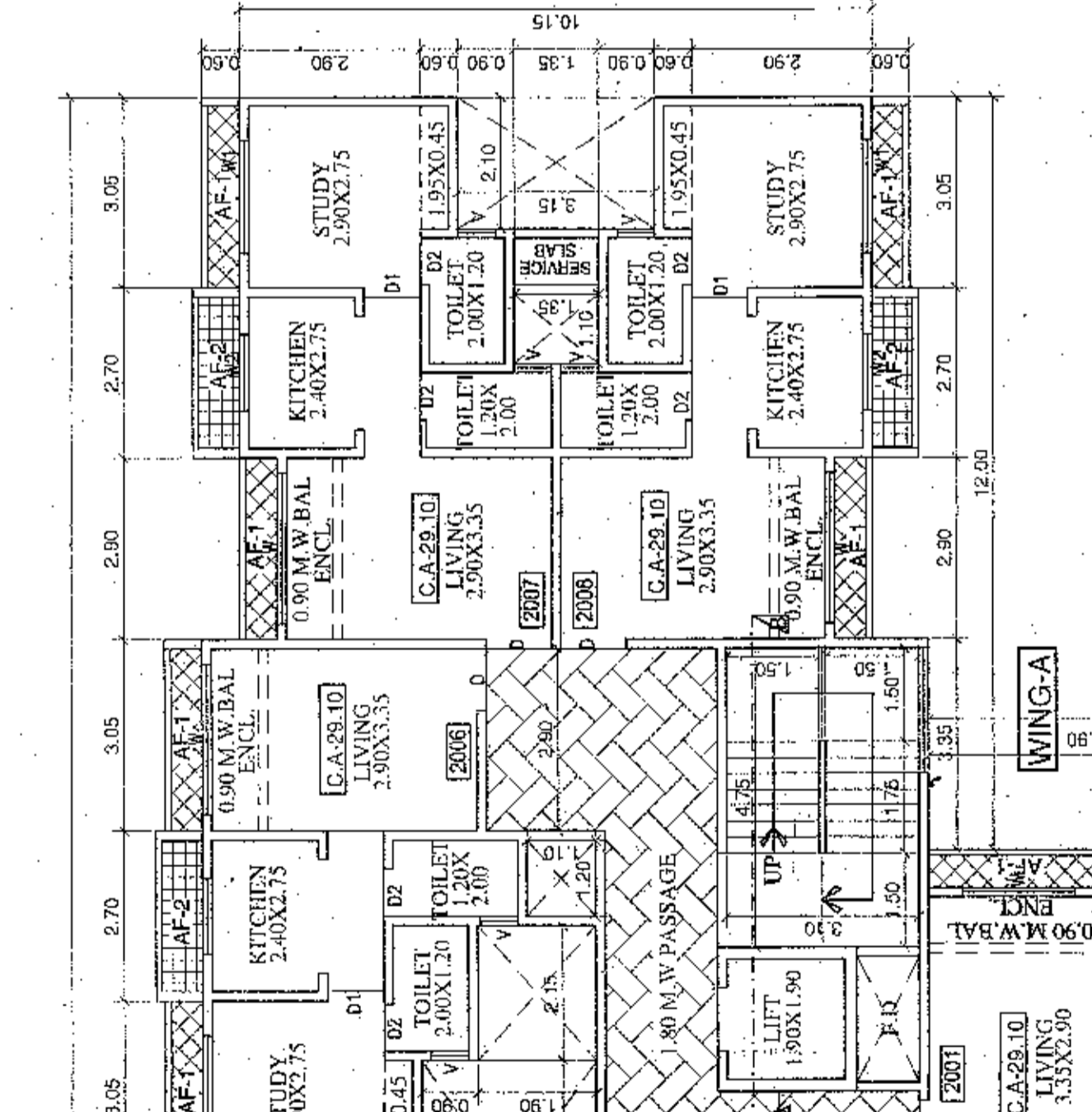
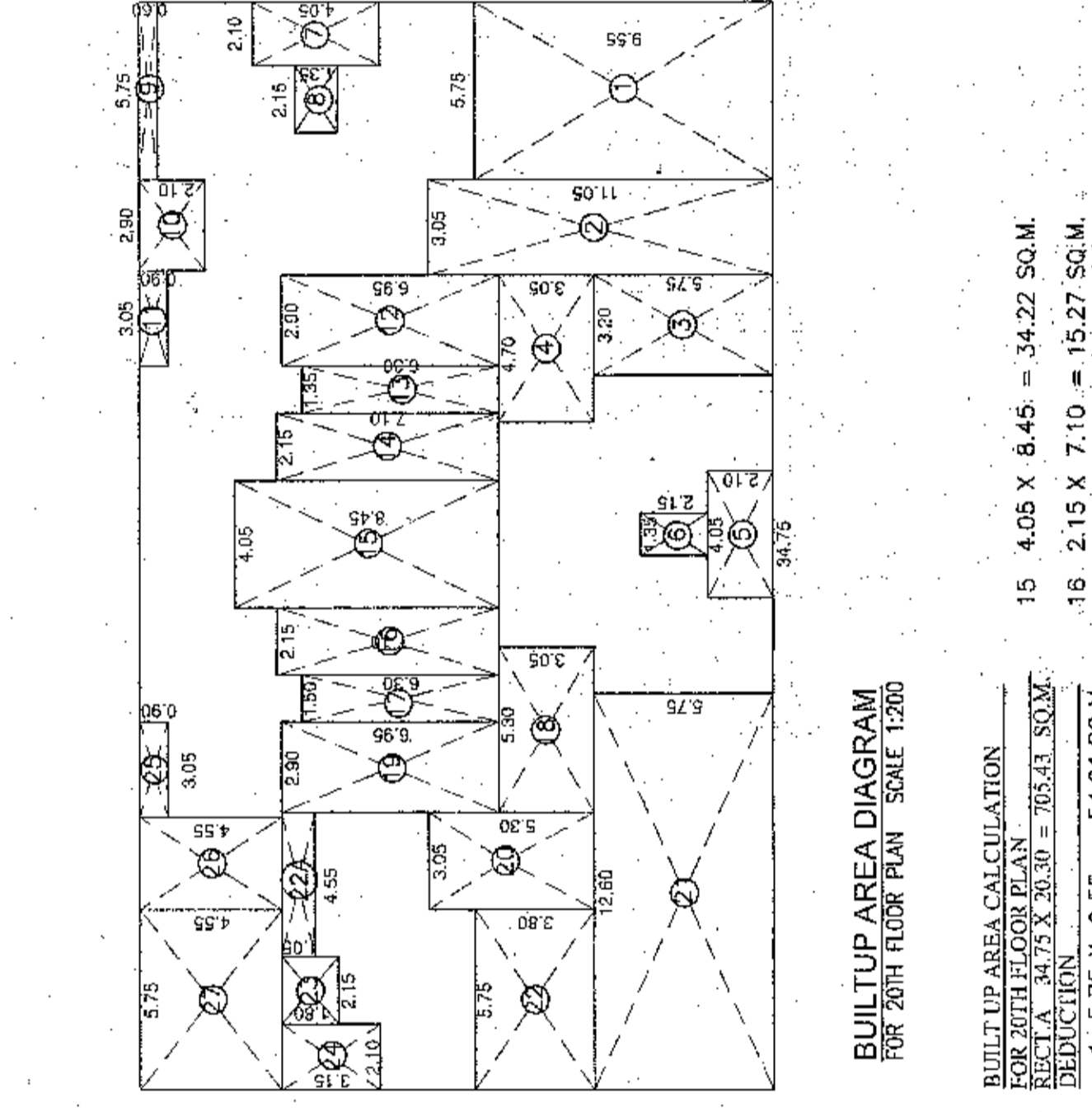
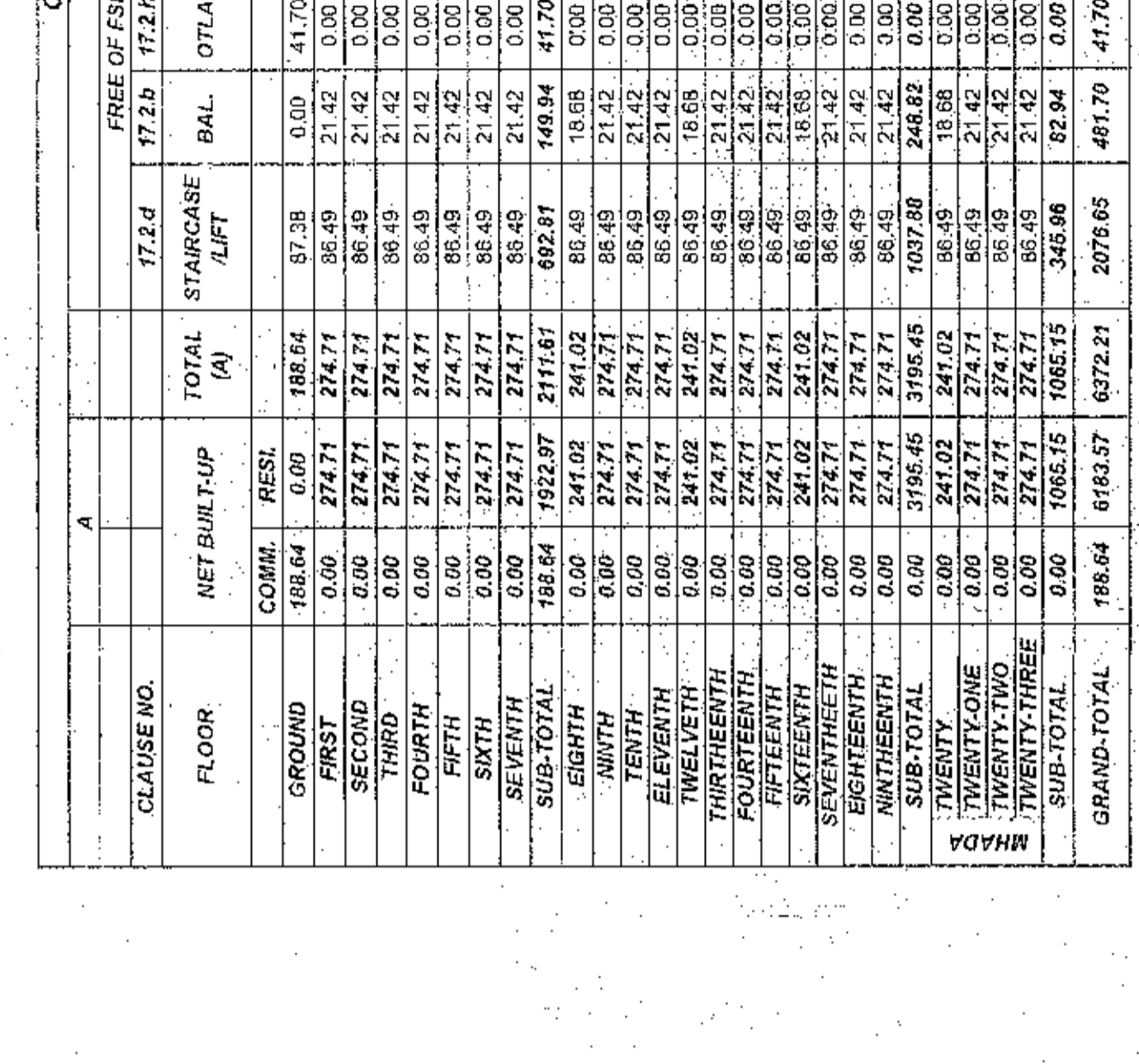
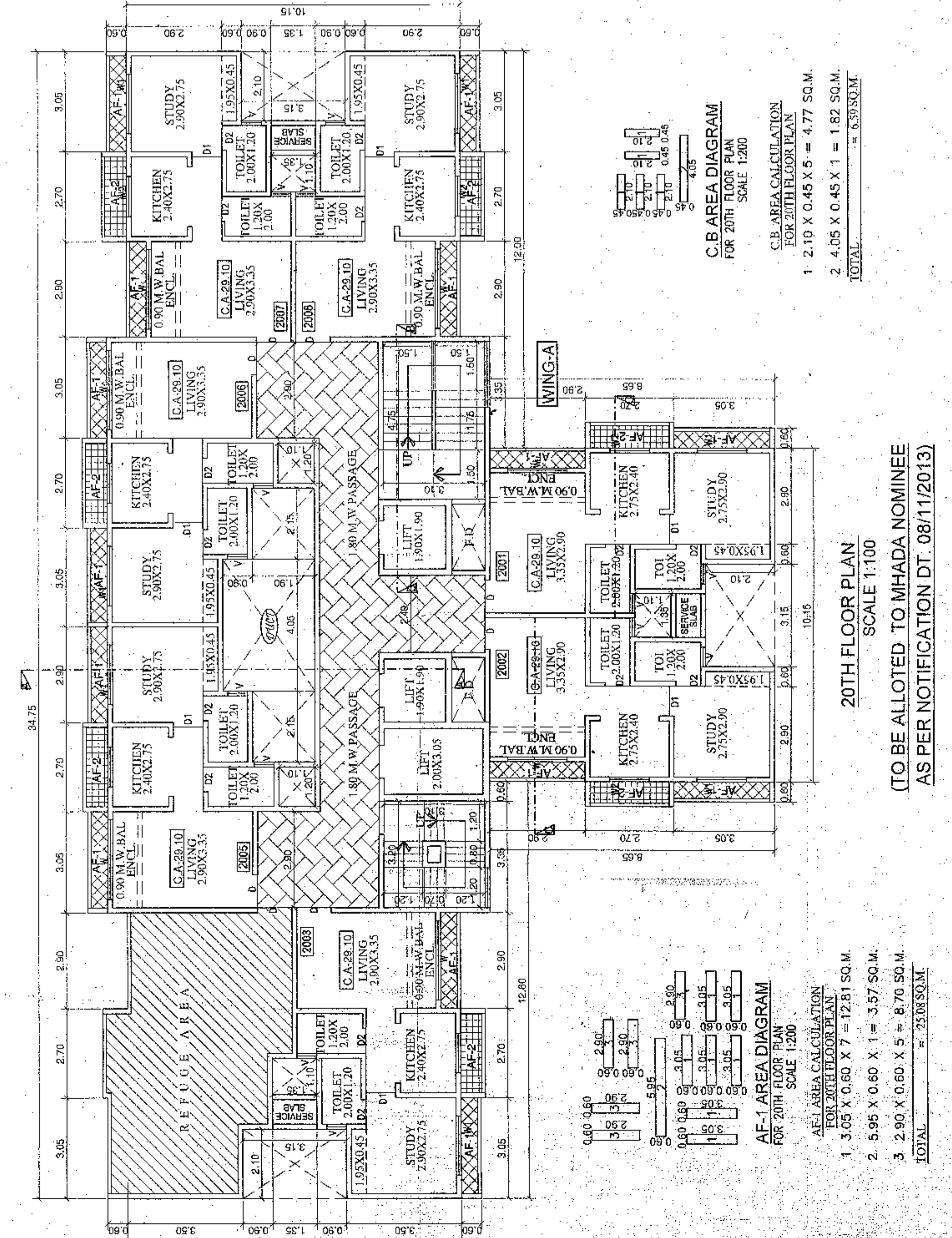
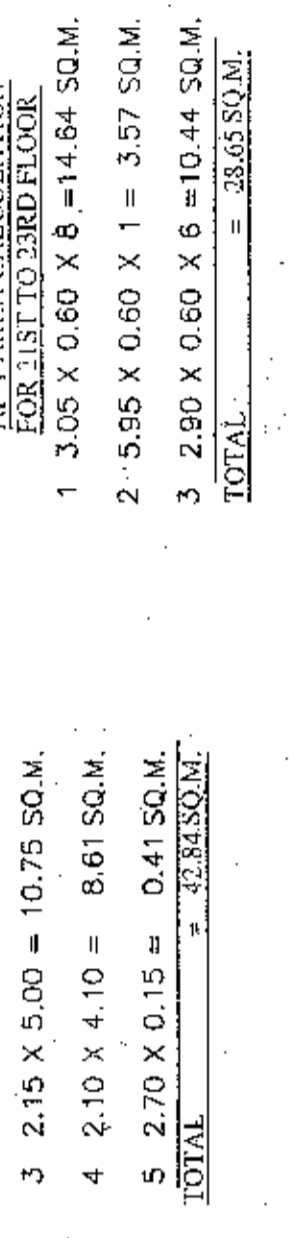
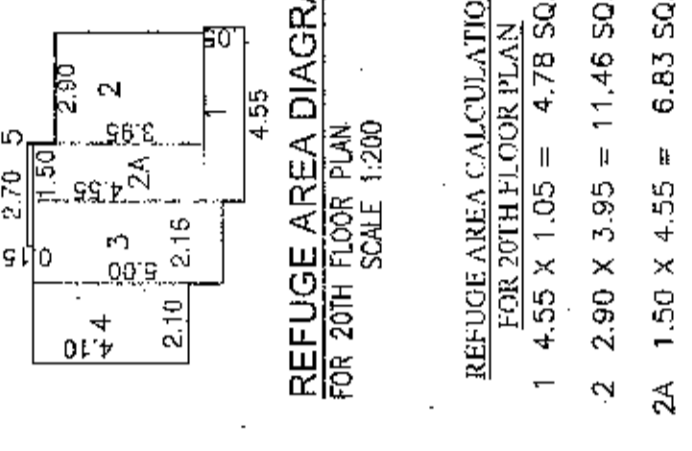
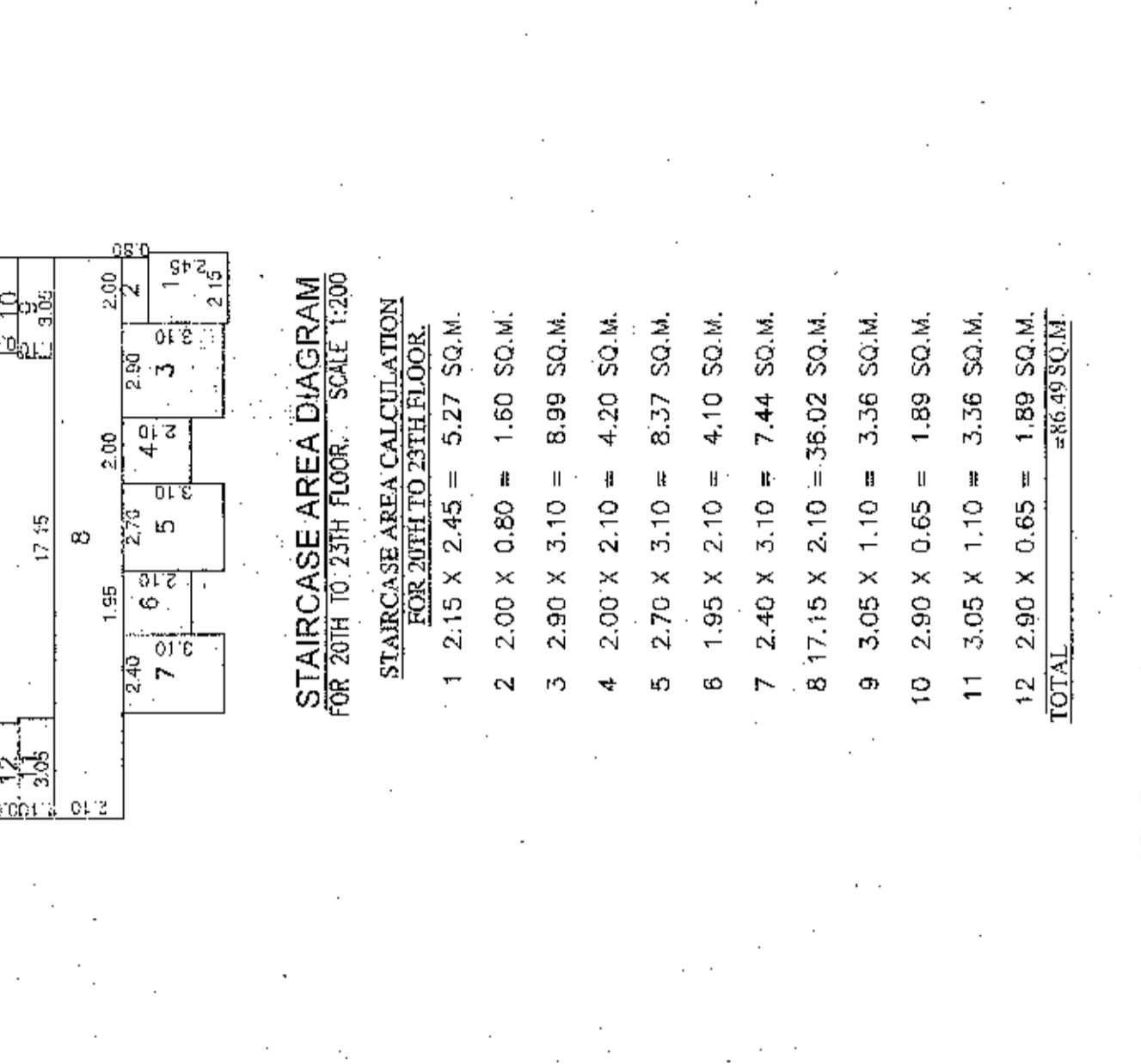
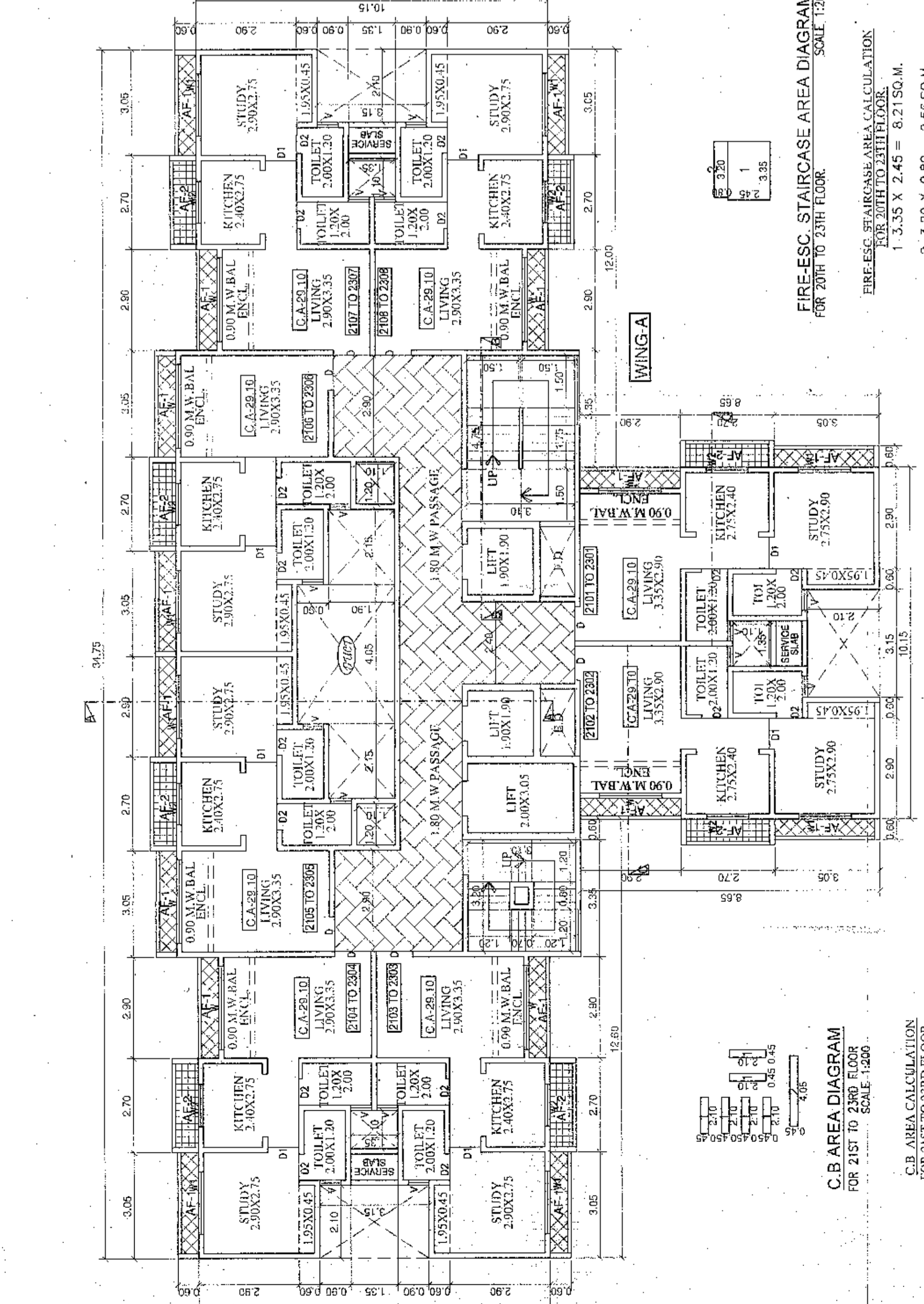
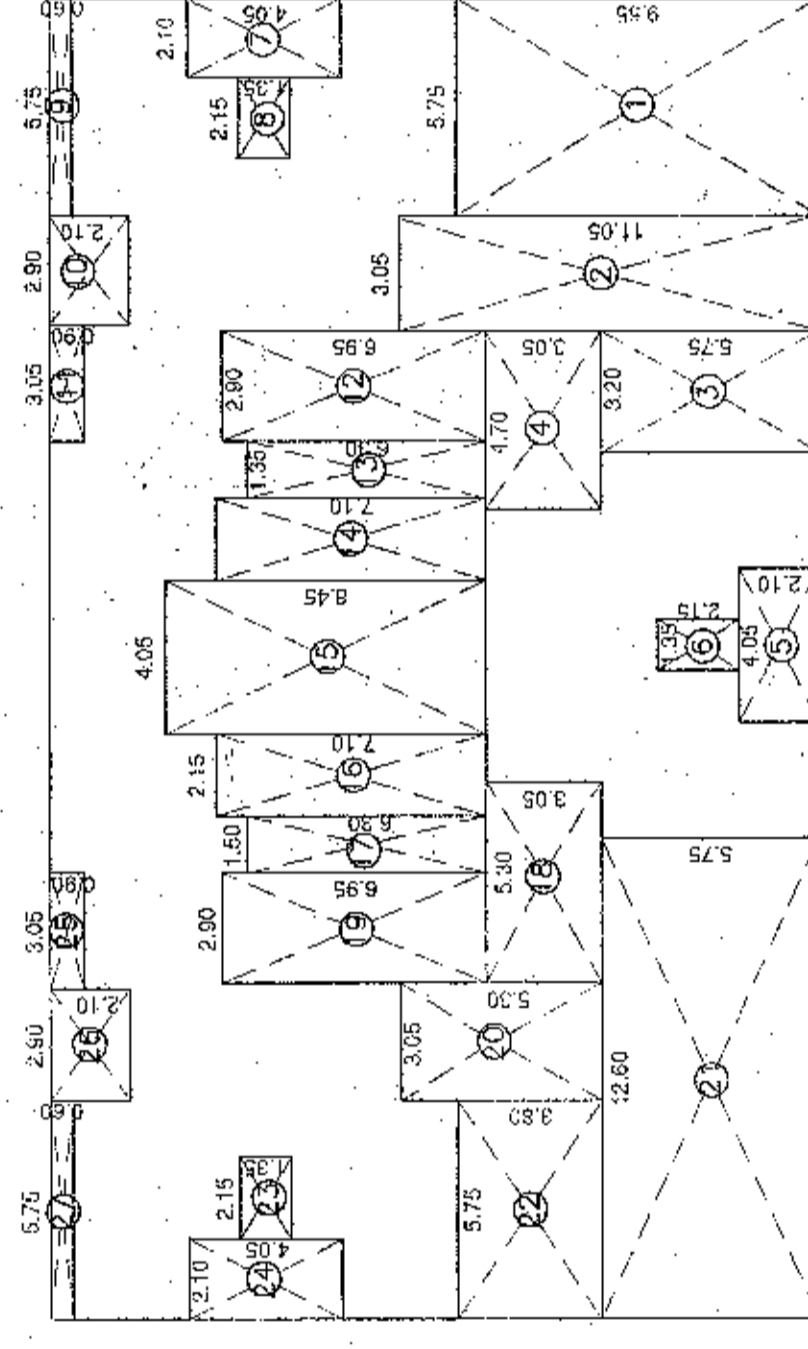
Approved as amended in
Subject to the Conditions mentioned in
this Office letter No. VV/CITY/CC/175
VP/329/15/15/50/45/2017/20

Date: 23/05/2018

Deputy Sector Town Planning
Commissioner
Mumbai City Municipal Corporation
Mumbai (W-16)



USE	GROUND	FIRST	SECOND	THIRD	FOURTH	FIFTH	SIXTH	SEVENTH	EIGHTH	NINTH	TENTH	ELEVENTH	TWELFTH	THIRTEENTH	FOURTEENTH	FIFTEENTH	SIXTEENTH	SEVENTEENTH	EIGHTEENTH	NINETEENTH	TWENTY	TWENTY-ONE	TWENTY-TWO	TOTAL
A.F-1	0.00	14.28	28.56	28.56	28.56	28.56	28.56	28.56	28.56	28.56	28.56	28.56	28.56	28.56	28.56	28.56	28.56	28.56	28.56	28.56	28.56	28.56	28.56	331.77
A.F-2	0.00	9.12	18.24	18.24	18.24	18.24	18.24	18.24	18.24	18.24	18.24	18.24	18.24	18.24	18.24	18.24	18.24	18.24	18.24	18.24	18.24	18.24	18.24	217.77
TOTAL	0.00	23.40	46.80	46.80	46.80	46.80	46.80	46.80	46.80	46.80	46.80	46.80	46.80	46.80	46.80	46.80	46.80	46.80	46.80	46.80	46.80	46.80	46.80	549.54



CONSTRUCTION AREA STATEMENT

CLAUSE NO.	FLOOR	NET BUILTUP AREA (A)	TOTAL STAIRCASE AREA (B)	TOTAL REFUGE AREA (C)	TOTAL A.F. AREA (D)	FREE OF FSI (WITHOUT PREMIUM)		TOTAL FSI (E)	TOTAL FSI (F)
						STAIRCASE AREA (B)	REFUGE AREA (C)		
1	GROUND	188.84	0.00	0.00	0.00	188.84	0.00	188.84	188.84
2	FIRST	188.84	0.00	0.00	0.00	188.84	0.00	188.84	188.84
3	SECOND	188.84	0.00	0.00	0.00	188.84	0.00	188.84	188.84
4	THIRD	188.84	0.00	0.00	0.00	188.84	0.00	188.84	188.84
5	FOURTH	188.84	0.00	0.00	0.00	188.84	0.00	188.84	188.84
6	FIFTH	188.84	0.00	0.00	0.00	188.84	0.00	188.84	188.84
7	SIXTH	188.84	0.00	0.00	0.00	188.84	0.00	188.84	188.84
8	SEVENTH	188.84	0.00	0.00	0.00	188.84	0.00	188.84	188.84
9	EIGHTH	188.84	0.00	0.00	0.00	188.84	0.00	188.84	188.84
10	NINTH	188.84	0.00	0.00	0.00	188.84	0.00	188.84	188.84
11	TENTH	188.84	0.00	0.00	0.00	188.84	0.00	188.84	188.84
12	ELEVENTH	188.84	0.00	0.00	0.00	188.84	0.00	188.84	188.84
13	TWELFTH	188.84	0.00	0.00	0.00	188.84	0.00	188.84	188.84
14	THIRTEENTH	188.84	0.00	0.00	0.00	188.84	0.00	188.84	188.84
15	FOURTEENTH	188.84	0.00	0.00	0.00	188.84	0.00	188.84	188.84
16	FIFTEENTH	188.84	0.00	0.00	0.00	188.84	0.00	188.84	188.84
17	SIXTEENTH	188.84	0.00	0.00	0.00	188.84	0.00	188.84	188.84
18	SEVENTEENTH	188.84	0.00	0.00	0.00	188.84	0.00	188.84	188.84
19	EIGHTEENTH	188.84	0.00	0.00	0.00	188.84	0.00	188.84	188.84
20	NINETEENTH	188.84	0.00	0.00	0.00	188.84	0.00	188.84	188.84
21	TWENTY	188.84	0.00	0.00	0.00	188.84	0.00	188.84	188.84
22	TWENTY-ONE	188.84	0.00	0.00	0.00	188.84	0.00	188.84	188.84
23	TWENTY-TWO	188.84	0.00	0.00	0.00	188.84	0.00	188.84	188.84
24	TOTAL	4429.92	0.00	0.00	0.00	4429.92	0.00	4429.92	4429.92

PROPOSED GROUP HOUSING SCHEME
AT VILLAGE - GOKHIWARE, TALUKA - VASAL, DIST. - PALGHAR

SHRI. DEVENDRA R. LADHANI
(P.A HOLDER)

DATE: 12/12/2018
SCALE: AS SHOWN
DRAWN BY: NIKITA VARTAK
CHECKED: [Signature]

DESIGN NO. 1759/M/2012
DATE: 12/12/2018
SCALE: AS SHOWN
DRAWN BY: NIKITA VARTAK
CHECKED: [Signature]

sanat mehta & associates
PANCHSHWAR TOWER - 403
B-20, GOKHIWARE, VASAL, DIST. PALGHAR
PHONE: 98220 20000
WWW.SANATMEHTA.COM