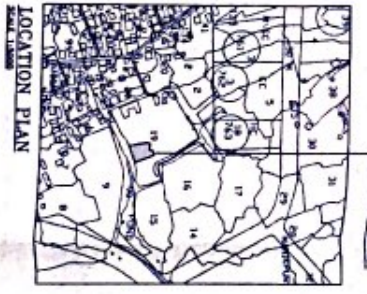
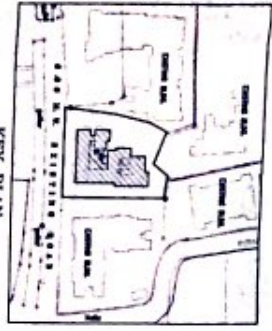


PROPOSED SITE



TOTAL BUILT-UP-CONSTRUCTION AREA STATEMENT

FLOOR	BUILDING AREA		AREA OF PLOT WITH PERMITTED		POCKET TERRACE
	BUILDING AREA SQ.MT	TOTAL SQ.MT	BUILDING AREA SQ.MT	CONSTR. AREA SQ.MT	
0th FLOOR	-	-	21,580	21,580	-
1st FLOOR	275.48	275.48	44.31	347.78	-
2nd FLOOR	275.48	275.48	44.31	347.78	-
3rd FLOOR	207.84	207.84	30.64	322.28	24.87
4th FLOOR	184.78	184.78	14.88	227.73	54.73
TOTAL	877.28	877.28	201.14	1798.54	184.68

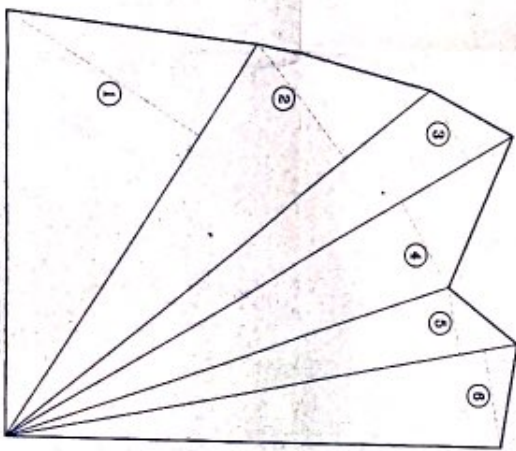
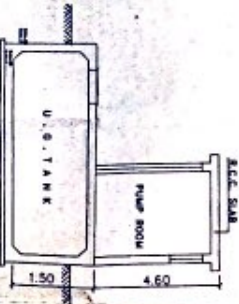
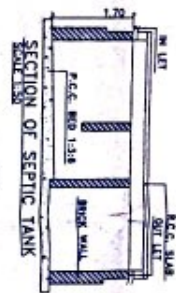
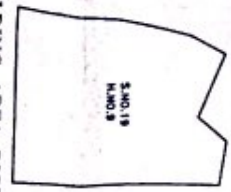
PARKING AREA STATEMENT WING

AREA	TERRITORY	CAR PARKING		TWO WHEELER PARKING	
		NO. OF CARS	NO. OF TWO WHEELERS	NO. OF CARS	NO. OF TWO WHEELERS
1st FLOOR	1 NO.	0/04	0/20	0/20	1
2nd FLOOR	20 NO.	20/20	1/20	20/20	20
TOTAL	21 NO.	20/24	1/20	20/20	21

HOLDING AREA DIAGRAM  
SCALE 1:1000

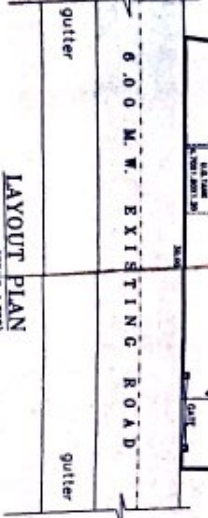
HOLDING AREA STATEMENT

S.NO.	H.NO.	AREA AS PER 7/12
18	9	1010.00 SQ.MT.
TOTAL		1010.00 SQ.MT.



PLOT AREA CALCULATION

1	31.80 X 18.10 X 0.90	= 504.28 SQ.MT.
2	38.20 X 10.01 X 0.90	= 304.28 SQ.MT.
3	42.80 X 8.00 X 0.90	= 132.24 SQ.MT.
4	42.80 X 7.10 X 0.90	= 102.28 SQ.MT.
5	37.80 X 4.00 X 0.90	= 82.28 SQ.MT.
6	37.80 X 7.00 X 0.90	= 102.28 SQ.MT.
TOTAL		= 1798.54 SQ.MT.



V.P. NO. 5967 SHEET NO. 1  
LAYOUT PLAN

PROFORMA I

Sl. No.	DESCRIPTION	UNIT	AMOUNT
1.	AREA STATEMENT	SQ.MT.	1010.00
2.	AREA OF PLOT	SQ.MT.	1010.00
3.	CONSTRUCTION COST	RS.	1010.00
4.	CONSTRUCTION COST	RS.	1010.00
5.	CONSTRUCTION COST	RS.	1010.00
6.	CONSTRUCTION COST	RS.	1010.00
7.	CONSTRUCTION COST	RS.	1010.00
8.	CONSTRUCTION COST	RS.	1010.00
9.	CONSTRUCTION COST	RS.	1010.00
10.	CONSTRUCTION COST	RS.	1010.00
11.	CONSTRUCTION COST	RS.	1010.00
12.	CONSTRUCTION COST	RS.	1010.00
13.	CONSTRUCTION COST	RS.	1010.00
14.	CONSTRUCTION COST	RS.	1010.00
15.	CONSTRUCTION COST	RS.	1010.00
16.	CONSTRUCTION COST	RS.	1010.00
17.	CONSTRUCTION COST	RS.	1010.00
18.	CONSTRUCTION COST	RS.	1010.00
19.	CONSTRUCTION COST	RS.	1010.00
20.	CONSTRUCTION COST	RS.	1010.00
21.	CONSTRUCTION COST	RS.	1010.00
22.	CONSTRUCTION COST	RS.	1010.00
23.	CONSTRUCTION COST	RS.	1010.00
24.	CONSTRUCTION COST	RS.	1010.00
25.	CONSTRUCTION COST	RS.	1010.00
26.	CONSTRUCTION COST	RS.	1010.00
27.	CONSTRUCTION COST	RS.	1010.00
28.	CONSTRUCTION COST	RS.	1010.00
29.	CONSTRUCTION COST	RS.	1010.00
30.	CONSTRUCTION COST	RS.	1010.00
31.	CONSTRUCTION COST	RS.	1010.00
32.	CONSTRUCTION COST	RS.	1010.00
33.	CONSTRUCTION COST	RS.	1010.00
34.	CONSTRUCTION COST	RS.	1010.00
35.	CONSTRUCTION COST	RS.	1010.00
36.	CONSTRUCTION COST	RS.	1010.00
37.	CONSTRUCTION COST	RS.	1010.00
38.	CONSTRUCTION COST	RS.	1010.00
39.	CONSTRUCTION COST	RS.	1010.00
40.	CONSTRUCTION COST	RS.	1010.00
41.	CONSTRUCTION COST	RS.	1010.00
42.	CONSTRUCTION COST	RS.	1010.00
43.	CONSTRUCTION COST	RS.	1010.00
44.	CONSTRUCTION COST	RS.	1010.00
45.	CONSTRUCTION COST	RS.	1010.00
46.	CONSTRUCTION COST	RS.	1010.00
47.	CONSTRUCTION COST	RS.	1010.00
48.	CONSTRUCTION COST	RS.	1010.00
49.	CONSTRUCTION COST	RS.	1010.00
50.	CONSTRUCTION COST	RS.	1010.00
51.	CONSTRUCTION COST	RS.	1010.00
52.	CONSTRUCTION COST	RS.	1010.00
53.	CONSTRUCTION COST	RS.	1010.00
54.	CONSTRUCTION COST	RS.	1010.00
55.	CONSTRUCTION COST	RS.	1010.00
56.	CONSTRUCTION COST	RS.	1010.00
57.	CONSTRUCTION COST	RS.	1010.00
58.	CONSTRUCTION COST	RS.	1010.00
59.	CONSTRUCTION COST	RS.	1010.00
60.	CONSTRUCTION COST	RS.	1010.00
61.	CONSTRUCTION COST	RS.	1010.00
62.	CONSTRUCTION COST	RS.	1010.00
63.	CONSTRUCTION COST	RS.	1010.00
64.	CONSTRUCTION COST	RS.	1010.00
65.	CONSTRUCTION COST	RS.	1010.00
66.	CONSTRUCTION COST	RS.	1010.00
67.	CONSTRUCTION COST	RS.	1010.00
68.	CONSTRUCTION COST	RS.	1010.00
69.	CONSTRUCTION COST	RS.	1010.00
70.	CONSTRUCTION COST	RS.	1010.00
71.	CONSTRUCTION COST	RS.	1010.00
72.	CONSTRUCTION COST	RS.	1010.00
73.	CONSTRUCTION COST	RS.	1010.00
74.	CONSTRUCTION COST	RS.	1010.00
75.	CONSTRUCTION COST	RS.	1010.00
76.	CONSTRUCTION COST	RS.	1010.00
77.	CONSTRUCTION COST	RS.	1010.00
78.	CONSTRUCTION COST	RS.	1010.00
79.	CONSTRUCTION COST	RS.	1010.00
80.	CONSTRUCTION COST	RS.	1010.00
81.	CONSTRUCTION COST	RS.	1010.00
82.	CONSTRUCTION COST	RS.	1010.00
83.	CONSTRUCTION COST	RS.	1010.00
84.	CONSTRUCTION COST	RS.	1010.00
85.	CONSTRUCTION COST	RS.	1010.00
86.	CONSTRUCTION COST	RS.	1010.00
87.	CONSTRUCTION COST	RS.	1010.00
88.	CONSTRUCTION COST	RS.	1010.00
89.	CONSTRUCTION COST	RS.	1010.00
90.	CONSTRUCTION COST	RS.	1010.00
91.	CONSTRUCTION COST	RS.	1010.00
92.	CONSTRUCTION COST	RS.	1010.00
93.	CONSTRUCTION COST	RS.	1010.00
94.	CONSTRUCTION COST	RS.	1010.00
95.	CONSTRUCTION COST	RS.	1010.00
96.	CONSTRUCTION COST	RS.	1010.00
97.	CONSTRUCTION COST	RS.	1010.00
98.	CONSTRUCTION COST	RS.	1010.00
99.	CONSTRUCTION COST	RS.	1010.00
100.	CONSTRUCTION COST	RS.	1010.00

PROFORMA II

CONTENTS OF SHEET

1. AREA STATEMENT

2. AREA OF PLOT

3. CONSTRUCTION COST

4. CONSTRUCTION COST

5. CONSTRUCTION COST

6. CONSTRUCTION COST

7. CONSTRUCTION COST

8. CONSTRUCTION COST

9. CONSTRUCTION COST

10. CONSTRUCTION COST

11. CONSTRUCTION COST

12. CONSTRUCTION COST

13. CONSTRUCTION COST

14. CONSTRUCTION COST

15. CONSTRUCTION COST

16. CONSTRUCTION COST

17. CONSTRUCTION COST

18. CONSTRUCTION COST

19. CONSTRUCTION COST

20. CONSTRUCTION COST

21. CONSTRUCTION COST

22. CONSTRUCTION COST

23. CONSTRUCTION COST

24. CONSTRUCTION COST

25. CONSTRUCTION COST

26. CONSTRUCTION COST

27. CONSTRUCTION COST

28. CONSTRUCTION COST

29. CONSTRUCTION COST

30. CONSTRUCTION COST

31. CONSTRUCTION COST

32. CONSTRUCTION COST

33. CONSTRUCTION COST

34. CONSTRUCTION COST

35. CONSTRUCTION COST

36. CONSTRUCTION COST

37. CONSTRUCTION COST

38. CONSTRUCTION COST

39. CONSTRUCTION COST

40. CONSTRUCTION COST

41. CONSTRUCTION COST

42. CONSTRUCTION COST

43. CONSTRUCTION COST

44. CONSTRUCTION COST

45. CONSTRUCTION COST

46. CONSTRUCTION COST

47. CONSTRUCTION COST

48. CONSTRUCTION COST

49. CONSTRUCTION COST

50. CONSTRUCTION COST

51. CONSTRUCTION COST

52. CONSTRUCTION COST

53. CONSTRUCTION COST

54. CONSTRUCTION COST

55. CONSTRUCTION COST

56. CONSTRUCTION COST

57. CONSTRUCTION COST

58. CONSTRUCTION COST

59. CONSTRUCTION COST

60. CONSTRUCTION COST

61. CONSTRUCTION COST

62. CONSTRUCTION COST

63. CONSTRUCTION COST

64. CONSTRUCTION COST

65. CONSTRUCTION COST

66. CONSTRUCTION COST

67. CONSTRUCTION COST

68. CONSTRUCTION COST

69. CONSTRUCTION COST

70. CONSTRUCTION COST

71. CONSTRUCTION COST

72. CONSTRUCTION COST

73. CONSTRUCTION COST

74. CONSTRUCTION COST

75. CONSTRUCTION COST

76. CONSTRUCTION COST

77. CONSTRUCTION COST

78. CONSTRUCTION COST

79. CONSTRUCTION COST

80. CONSTRUCTION COST

81. CONSTRUCTION COST

82. CONSTRUCTION COST

83. CONSTRUCTION COST

84. CONSTRUCTION COST

85. CONSTRUCTION COST

86. CONSTRUCTION COST

87. CONSTRUCTION COST

88. CONSTRUCTION COST

89. CONSTRUCTION COST

90. CONSTRUCTION COST

91. CONSTRUCTION COST

92. CONSTRUCTION COST

93. CONSTRUCTION COST

94. CONSTRUCTION COST

95. CONSTRUCTION COST

96. CONSTRUCTION COST

97. CONSTRUCTION COST

98. CONSTRUCTION COST

99. CONSTRUCTION COST

100. CONSTRUCTION COST

STAMP OF DATE OF RECEIPT OF PLANS

TRIPLE COPY

APPROVED BY: [Signature]

DATE: 09-10-2017

SCALE: AS SHOWN

DRAWN BY: [Signature]

CHECKED BY: [Signature]

EN-CON

Architectural & Structural Works

Project Consultants

0-17, 18th Street, 1st Floor, Sector 17, Gurgaon, Haryana

PHILIP SHOOTER JAMES KAMUJI (CO-OWNER) & PARTNER OF WINDING STAIRWAYS DESIGN & ARCHITECTURE

10th Floor, 10th Street, Sector 17, Gurgaon, Haryana

APPROVED BY: [Signature]

DATE: 09-10-2017

SCALE: AS SHOWN

DRAWN BY: [Signature]

CHECKED BY: [Signature]

EN-CON

Architectural & Structural Works

Project Consultants

0-17, 18th Street, 1st Floor, Sector 17, Gurgaon, Haryana

PHILIP SHOOTER JAMES KAMUJI (CO-OWNER) & PARTNER OF WINDING STAIRWAYS DESIGN & ARCHITECTURE

10th Floor, 10th Street, Sector 17, Gurgaon, Haryana