

USE	GROUND	FIRST	SECOND	THIRD	FOURTH	FIFTH	SIXTH	SEVENTH	EIGHTH	NINTH	TENTH	ELEVENTH	TWELVETH	THIRTEENTH	FOURTEENTH	FIFTEENTH	SIXTEENTH	SEVENTEENTH	EIGHTEENTH	NINETEENTH	TWENTY	TWENTY ONE	TWENTY TWO	TWENTY THREE	TOTAL	
A.P.F	0.00	101.500	101.500	101.500	101.500	101.500	101.500	101.500	101.500	101.500	101.500	101.500	101.500	101.500	101.500	101.500	101.500	101.500	101.500	101.500	101.500	101.500	101.500	101.500	2388.800	
A.P.F	0.00	87.200	87.200	87.200	87.200	87.200	87.200	87.200	87.200	87.200	87.200	87.200	87.200	87.200	87.200	87.200	87.200	87.200	87.200	87.200	87.200	87.200	87.200	87.200	87.200	1974.800
TOTAL	0.00	188.700	188.700	188.700	188.700	188.700	188.700	188.700	188.700	188.700	188.700	188.700	188.700	188.700	188.700	188.700	188.700	188.700	188.700	188.700	188.700	188.700	188.700	188.700	4363.600	

STAMP OF APPROVALS OF PLAN

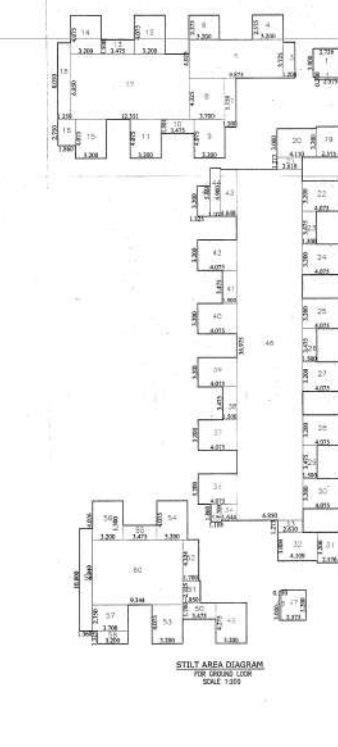
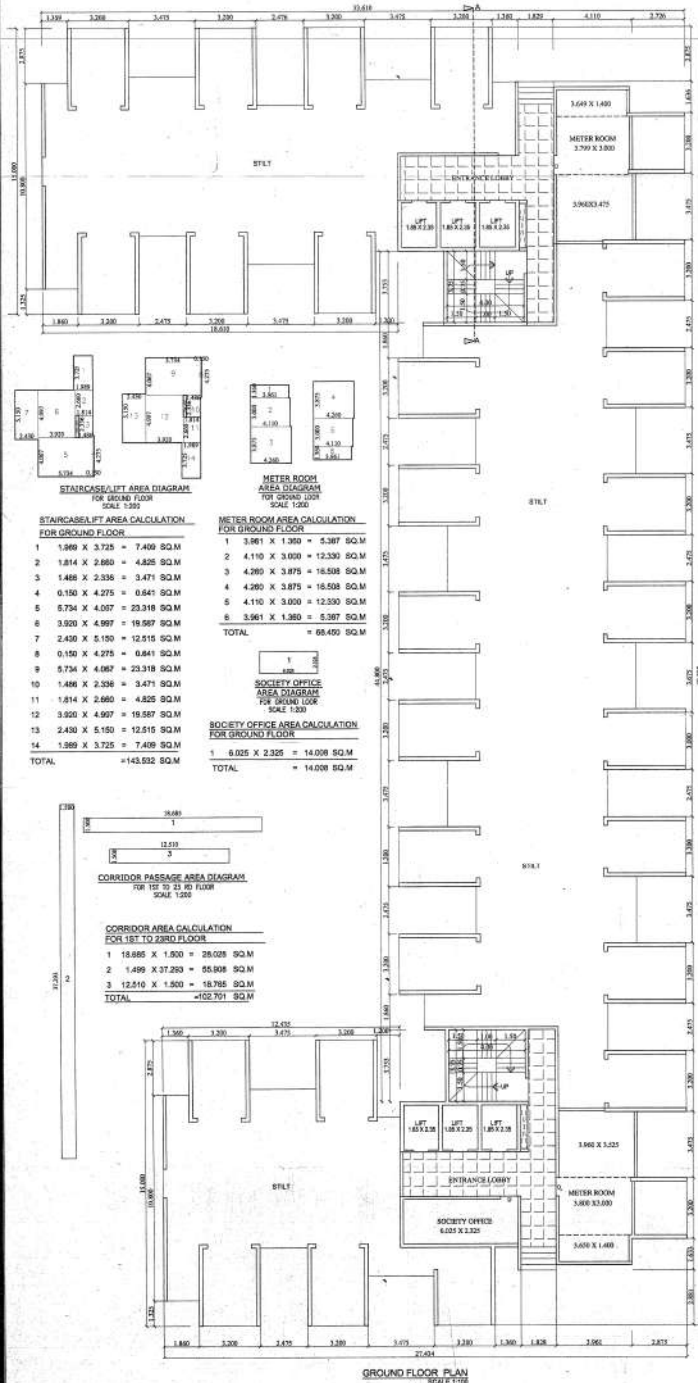
SECTOR - IV  
BLDG. NO. - 17  
SHEET NO - 1/3

Approved as per Approved  
[Signature]

THIS PLAN SHALL NOT BE CONSIDERED AS PROOF OF DEVELOPER FOR ANY PURPOSES UNLESS IT IS APPROVED BY THE COURT OF LAW.

Approved as per approved in...  
Subject to the conditions mentioned in...  
Approved by the Local Authority...  
Date: 15/08/2019

Scale: 1:1000  
Date: 15/08/2019



**STILT AREA CALCULATION FOR GROUND FLOOR**

1	2.750 X 3.000	= 8.175 SQ.M	32	4.108 X 3.000	= 12.324 SQ.M
2	2.275 X 3.000	= 6.815 SQ.M	33	2.810 X 3.275	= 3.323 SQ.M
3	1.700 X 3.275	= 4.470 SQ.M	34	1.844 X 1.700	= 2.788 SQ.M
4	3.200 X 2.875	= 8.240 SQ.M	35	1.105 X 1.840	= 2.055 SQ.M
5	8.875 X 4.025	= 37.417 SQ.M	36	4.075 X 3.200	= 13.040 SQ.M
6	8.200 X 2.875	= 8.240 SQ.M	37	4.075 X 3.200	= 13.040 SQ.M
7	1.200 X 5.150	= 6.180 SQ.M	38	1.600 X 3.475	= 5.213 SQ.M
8	3.700 X 4.325	= 16.002 SQ.M	39	4.075 X 3.200	= 13.040 SQ.M
9	3.200 X 4.075	= 13.040 SQ.M	40	4.075 X 3.200	= 13.040 SQ.M
10	3.475 X 1.501	= 2.215 SQ.M	41	1.500 X 3.475	= 5.213 SQ.M
11	3.200 X 4.075	= 13.040 SQ.M	42	4.075 X 3.200	= 13.040 SQ.M
12	3.200 X 4.075	= 13.040 SQ.M	43	1.648 X 4.900	= 8.075 SQ.M
13	3.475 X 1.500	= 2.212 SQ.M	44	1.102 X 5.080	= 5.575 SQ.M
14	3.200 X 4.075	= 13.040 SQ.M	45	1.325 X 3.200	= 4.240 SQ.M
15	3.200 X 4.075	= 13.040 SQ.M	46	8.850 X 36.875	= 323.263 SQ.M
16	1.860 X 2.750	= 5.115 SQ.M	47	2.575 X 3.200	= 8.240 SQ.M
17	12.251 X 6.850	= 84.004 SQ.M	48	0.150 X 3.000	= 0.450 SQ.M
18	1.350 X 8.050	= 10.940 SQ.M	49	3.200 X 4.275	= 13.680 SQ.M
19	2.875 X 3.200	= 8.240 SQ.M	50	3.475 X 1.700	= 5.907 SQ.M
20	4.110 X 3.000	= 12.330 SQ.M	51	1.850 X 2.325	= 4.301 SQ.M
21	2.810 X 1.277	= 3.333 SQ.M	52	1.700 X 4.324	= 7.351 SQ.M
22	4.075 X 3.200	= 13.040 SQ.M	53	3.200 X 4.075	= 13.040 SQ.M
23	1.500 X 3.475	= 5.213 SQ.M	54	3.200 X 4.075	= 13.040 SQ.M
24	4.075 X 3.200	= 13.040 SQ.M	55	3.475 X 1.500	= 5.213 SQ.M
25	4.075 X 3.200	= 13.040 SQ.M	56	3.200 X 4.075	= 13.040 SQ.M
26	1.500 X 3.475	= 5.213 SQ.M	57	3.700 X 2.750	= 10.175 SQ.M
27	4.075 X 3.200	= 13.040 SQ.M	58	3.200 X 1.325	= 4.240 SQ.M
28	4.075 X 3.200	= 13.040 SQ.M	59	1.380 X 10.800	= 14.880 SQ.M
29	1.500 X 3.475	= 5.213 SQ.M	60	3.344 X 6.849	= 23.088 SQ.M
30	4.075 X 3.200	= 13.040 SQ.M	TOTAL		= 838.527 SQ.M
31	2.575 X 3.200	= 8.240 SQ.M			

**STAIRCASE/LIFT AREA CALCULATION FOR GROUND FLOOR**

1	3.961 X 1.380	= 5.387 SQ.M
2	1.814 X 2.880	= 4.825 SQ.M
3	1.488 X 2.336	= 3.471 SQ.M
4	0.150 X 4.275	= 0.641 SQ.M
5	5.734 X 4.007	= 23.318 SQ.M
6	3.920 X 4.997	= 19.587 SQ.M
7	2.420 X 5.150	= 12.515 SQ.M
8	0.150 X 4.275	= 0.641 SQ.M
9	0.734 X 4.088	= 2.918 SQ.M
10	1.488 X 2.336	= 3.471 SQ.M
11	1.814 X 2.880	= 4.825 SQ.M
12	3.920 X 4.997	= 19.587 SQ.M
13	2.420 X 5.150	= 12.515 SQ.M
14	1.389 X 3.725	= 7.418 SQ.M
TOTAL		= 143.632 SQ.M

**METER ROOM AREA CALCULATION FOR GROUND FLOOR**

1	3.961 X 1.380	= 5.387 SQ.M
2	4.110 X 3.000	= 12.330 SQ.M
3	4.280 X 3.875	= 16.508 SQ.M
4	4.280 X 3.875	= 16.508 SQ.M
5	4.110 X 3.000	= 12.330 SQ.M
6	3.961 X 1.380	= 5.387 SQ.M
TOTAL		= 65.450 SQ.M

**CORRIDOR PASSAGE AREA CALCULATION FOR 1ST TO 2ND FLOOR**

1	18.885 X 1.500	= 28.328 SQ.M
2	1.496 X 3.200	= 4.787 SQ.M
3	12.610 X 1.500	= 18.915 SQ.M
TOTAL		= 102.701 SQ.M

**BUILT-UP AREA STATEMENT**

USE	GROUND	FIRST	SECOND	THIRD	FOURTH	FIFTH	SIXTH	SEVENTH	EIGHTH	NINTH	TENTH	ELEVENTH	TWELVETH	THIRTEENTH	FOURTEENTH	FIFTEENTH	SIXTEENTH	SEVENTEENTH	EIGHTEENTH	NINETEENTH	TWENTY	TWENTY ONE	TWENTY TWO	TWENTY THREE	TOTAL
RESIDENTIAL	0.00	780.907	780.907	780.907	780.907	780.907	780.907	780.907	780.907	780.907	780.907	780.907	780.907	780.907	780.907	780.907	780.907	780.907	780.907	780.907	780.907	780.907	780.907	780.907	19748.711
COMMERCIAL	0.00	780.907	780.907	780.907	780.907	780.907	780.907	780.907	780.907	780.907	780.907	780.907	780.907	780.907	780.907	780.907	780.907	780.907	780.907	780.907	780.907	780.907	780.907	780.907	19748.711
TOTAL	0.00	1561.814	1561.814	1561.814	1561.814	1561.814	1561.814	1561.814	1561.814	1561.814	1561.814	1561.814	1561.814	1561.814	1561.814	1561.814	1561.814	1561.814	1561.814	1561.814	1561.814	1561.814	1561.814	1561.814	39497.422

**A.F.2 AREA CALCULATION FOR 16TH, 17TH, 18TH, 19TH FLOOR**

1	3.200 X 0.750	= 2.400 SQ.M
2	3.200 X 0.750	= 2.400 SQ.M
3	3.200 X 0.750	= 2.400 SQ.M
4	3.200 X 0.750	= 2.400 SQ.M
5	3.200 X 0.750	= 2.400 SQ.M
6	3.200 X 0.750	= 2.400 SQ.M
7	3.200 X 0.750	= 2.400 SQ.M
8	3.200 X 0.750	= 2.400 SQ.M
9	3.200 X 0.750	= 2.400 SQ.M
10	3.200 X 0.750	= 2.400 SQ.M
11	3.200 X 0.750	= 2.400 SQ.M
12	3.200 X 0.750	= 2.400 SQ.M
13	3.200 X 0.750	= 2.400 SQ.M
14	3.200 X 0.750	= 2.400 SQ.M
15	3.200 X 0.750	= 2.400 SQ.M
16	3.200 X 0.750	= 2.400 SQ.M
17	3.200 X 0.750	= 2.400 SQ.M
18	3.200 X 0.750	= 2.400 SQ.M
19	3.200 X 0.750	= 2.400 SQ.M
20	3.200 X 0.750	= 2.400 SQ.M
21	3.200 X 0.750	= 2.400 SQ.M
22	3.200 X 0.750	= 2.400 SQ.M
23	3.200 X 0.750	= 2.400 SQ.M
24	3.200 X 0.750	= 2.400 SQ.M
25	3.200 X 0.750	= 2.400 SQ.M
26	3.200 X 0.750	= 2.400 SQ.M
27	3.200 X 0.750	= 2.400 SQ.M
28	3.200 X 0.750	= 2.400 SQ.M
29	3.200 X 0.750	= 2.400 SQ.M
30	3.200 X 0.750	= 2.400 SQ.M
TOTAL		= 67.200 SQ.M

**STAIRCASE/LIFT AREA CALCULATION FOR 1ST TO 2ND FLOOR**

1	1.830 X 0.180	= 0.293 SQ.M
2	8.820 X 2.510	= 14.688 SQ.M
3	1.571 X 2.336	= 3.671 SQ.M
4	3.920 X 2.336	= 9.167 SQ.M
5	2.385 X 6.000	= 14.310 SQ.M
6	8.820 X 3.807	= 22.734 SQ.M
7	8.820 X 3.807	= 22.734 SQ.M
8	1.571 X 2.337	= 3.671 SQ.M
9	3.960 X 2.336	= 9.157 SQ.M
10	2.385 X 5.000	= 11.925 SQ.M
11	8.820 X 2.510	= 14.688 SQ.M
12	1.820 X 0.180	= 0.293 SQ.M
TOTAL		= 124.476 SQ.M

**BALCONY AREA STATEMENT**

FLOOR	NET BUILT UP AREA	PERMS BALCONY AREA	PROPOSED BALCONY AREA	PROPOSED AREA	EXCESS
GROUND FLOOR	780.907	780.907	780.907	780.907	NL
1ST TO 15TH FLOOR	12447.711	12447.711	12447.711	12447.711	NL
16TH TO 20TH FLOOR	697.872	697.872	697.872	697.872	NL
TOTAL	17628.721	17628.721	17628.721	17628.721	NL

**CONSTRUCTION AREA STATEMENT**

CLAUSE NO.	FLOOR	NET BUILT-UP	TOTAL (A)	FREE OF FSI (WITH Premium)				TOTAL FREE OF FSI (B)	TOTAL GRAND-TOTAL (A+B+C)
				STAIRCASE & LIFT	SOCIETY OFFICE	C.B.	METER-ROOM		
GROUND	0.000	0.000	0.000	143.532	0.000	14.008	0.000	157.540	157.540
FIRST	0.000	780.907	780.907	124.476	73.710	0.000	33.180	231.366	1012.701
SECOND	0.000	780.907	780.907	124.476	73.710	0.000	33.180	231.366	1012.701
THIRD	0.000	780.907	780.907	124.476	73.710	0.000	33.180	231.366	1012.701
FOURTH	0.000	780.907	780.907	124.476	73.710	0.000	33.180	231.366	1012.701
FIFTH	0.000	780.907	780.907	124.476	73.710	0.000	33.180	231.366	1012.701
SIXTH	0.000	780.907	780.907	124.476	73.710	0.000	33.180	231.366	1012.701
SEVENTH	0.000	780.907	780.907	124.476	73.710	0.000	33.180	231.366	1012.701
EIGHTH	0.000	780.907	780.907	124.476	73.710	0.000	33.180	231.366	1012.701
NINTH	0.000	780.907	780.907	124.476	73.710	0.000	33.180	231.366	1012.701
TENTH	0.000	780.907	780.907	124.476	73.710	0.000	33.180	231.366	1012.701
ELEVENTH	0.000	780.907	780.907	124.476	73.710	0.000	33.180	231.366	1012.701
TWELVETH	0.000	780.907	780.907	124.476	73.710	0.000	33.180	231.366	1012.701
THIRTEENTH	0.000	780.907	780.907	124.476	73.710	0.000	33.180	231.366	1012.701
FOURTEENTH	0.000	780.907	780.907	124.476	73.710	0.000	33.180	231.366	1012.701
FIFTEENTH	0.000	780.907	780.907	124.476	73.710	0.000	33.180	231.366	1012.701
SIXTEENTH	0.000	697.872	697.872	124.476	68.947	0.000	29.625	220.048	1012.701
SEVENTEENTH	0.000	780.907	780.907	124.476	73.710	0.000	33.180	231.366	1012.701
EIGHTEENTH	0.000	780.907	780.907	124.476	73.710	0.000	33.180	231.366	1012.701
NINETEENTH	0.000	780.907	780.907	124.476	73.710	0.000	33.180	231.366	1012.701
TWENTY	0.000	697.872	697.872	124.476	68.947	0.000	29.625	220.048	1012.701
TWENTY ONE	0.000	780.907	780.907	124.476	73.710	0.000	33.180	231.366	1012.701
TWENTY TWO	0.000	780.907	780.907	124.476	73.710	0.000	33.180	231.366	1012.701
TWENTY THREE	0.000	780.907	780.907	124.476	73.710	0.000	33.180	231.366	1012.701
GRAND-TOTAL	0.00	17628.721	17628.721	3056.480	1664.278	14.008	748.922	5433.686	39497.422