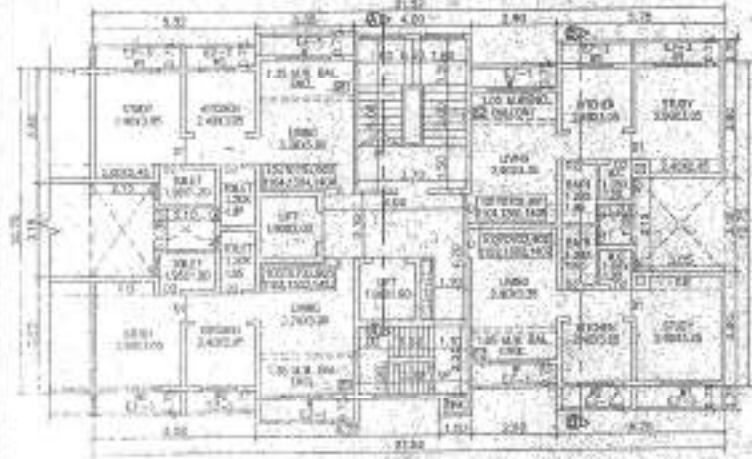
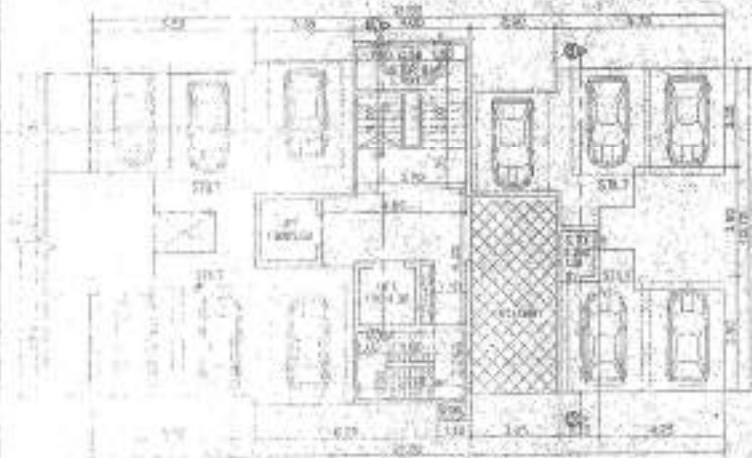




8TH, 10TH & 12TH FLOOR
SCALE 1/8"

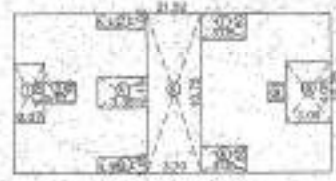


1ST, 2ND, 3RD, 4TH, 5TH, 6TH, 7TH, 8TH, 11TH, 13TH & 14TH FLOOR PLAN
SCALE 1/32"



GROUND FLOOR PLAN
SCALE 1/32"

- BUILT-UP AREA DIAGRAM FOR 1ST TO 14TH FL.**
SCALE 1/300
1. $1.28' \times 0.75' = 0.96' \text{ SQM}$
 2. $1.00' \times 0.75' = 0.75' \text{ SQM}$
 3. $1.00' \times 0.75' = 0.75' \text{ SQM}$
- TOTAL** = 2.46' SQM



- BUILT-UP AREA DIAGRAM FOR 1ST TO 14TH FL.**
SCALE 1/300
- BUILT-UP AREA CALCULATION FOR 1ST TO 14TH FL.**
- REVISION**
1. $1.20' \times 4.00' = 4.80' \text{ SQM}$
 2. $2.00' \times 3.00' = 6.00' \text{ SQM}$
 3. $1.00' \times 3.00' = 3.00' \text{ SQM}$
 4. $1.00' \times 2.00' = 2.00' \text{ SQM}$
 5. $1.00' \times 3.00' = 3.00' \text{ SQM}$
 6. $1.00' \times 2.00' = 2.00' \text{ SQM}$
 7. $1.00' \times 3.00' = 3.00' \text{ SQM}$
 8. $1.00' \times 2.00' = 2.00' \text{ SQM}$
 9. $1.00' \times 3.00' = 3.00' \text{ SQM}$
 10. $1.00' \times 2.00' = 2.00' \text{ SQM}$
- TOTAL** = 38.90' SQM
NET AREA 21,460.75 = 41.35' SQM

- BUILT AREA DIAGRAM FOR GROUND FL.**
SCALE 1/300
1. $1.28' \times 1.28' = 1.64' \text{ SQM}$
 2. $4.00' \times 3.00' = 12.00' \text{ SQM}$
 3. $1.28' \times 3.00' = 3.84' \text{ SQM}$
- TOTAL** = 17.48' SQM

- BUILT AREA CALCULATION FOR GROUND FL.**
1. $1.28' \times 1.28' = 1.64' \text{ SQM}$
 2. $4.00' \times 4.00' = 16.00' \text{ SQM}$
 3. $1.28' \times 4.00' = 5.12' \text{ SQM}$
 4. $1.00' \times 4.00' = 4.00' \text{ SQM}$
 5. $1.00' \times 3.00' = 3.00' \text{ SQM}$
 6. $1.00' \times 2.00' = 2.00' \text{ SQM}$
 7. $1.00' \times 3.00' = 3.00' \text{ SQM}$
 8. $1.00' \times 2.00' = 2.00' \text{ SQM}$
 9. $1.00' \times 3.00' = 3.00' \text{ SQM}$
 10. $1.00' \times 2.00' = 2.00' \text{ SQM}$
- TOTAL** = 53.18' SQM

- CO AREA DIAGRAM FOR 1ST TO 14TH FL.**
SCALE 1/300
1. $2.00' \times 0.48' \times 2 = 1.92' \text{ SQM}$
 2. $1.00' \times 0.48' \times 2 = 0.96' \text{ SQM}$
- TOTAL** = 2.88' SQM
- CO AREA CALCULATION FOR 1ST TO 14TH FL.**
1. $2.00' \times 0.48' \times 2 = 1.92' \text{ SQM}$
 2. $1.00' \times 0.48' \times 2 = 0.96' \text{ SQM}$
- TOTAL** = 2.88' SQM

- STARLETA PASSAGE AREA DIAGRAM FOR 1ST TO 14TH FL.**
SCALE 1/300
1. $1.00' \times 0.28' = 0.28' \text{ SQM}$
 2. $1.00' \times 0.28' = 0.28' \text{ SQM}$
 3. $1.00' \times 0.28' = 0.28' \text{ SQM}$
 4. $1.00' \times 0.28' = 0.28' \text{ SQM}$
 5. $1.00' \times 0.28' = 0.28' \text{ SQM}$
 6. $1.00' \times 0.28' = 0.28' \text{ SQM}$
 7. $1.00' \times 0.28' = 0.28' \text{ SQM}$
 8. $1.00' \times 0.28' = 0.28' \text{ SQM}$
 9. $1.00' \times 0.28' = 0.28' \text{ SQM}$
 10. $1.00' \times 0.28' = 0.28' \text{ SQM}$
- TOTAL** = 2.80' SQM

- STARLETA PASSAGE AREA DIAGRAM FOR GROUND FLOOR.**
SCALE 1/300
1. $1.00' \times 1.00' = 1.00' \text{ SQM}$
 2. $1.00' \times 1.00' = 1.00' \text{ SQM}$
- TOTAL** = 2.00' SQM

- STREET AREA DIAGRAM FOR GROUND FLOOR.**
SCALE 1/300
1. $1.00' \times 1.00' = 1.00' \text{ SQM}$
- TOTAL** = 1.00' SQM

- STREET AREA CALCULATION FOR GROUND FLOOR.**
1. $1.00' \times 1.00' = 1.00' \text{ SQM}$
- TOTAL** = 1.00' SQM

- STREET AREA CALCULATION FOR GROUND FL.**
SCALE 1/300
1. $1.00' \times 1.00' = 1.00' \text{ SQM}$
- TOTAL** = 1.00' SQM

- RECREATION STAR AREA DIAGRAM FOR GROUND FLOOR.**
SCALE 1/300
1. $1.00' \times 1.00' = 1.00' \text{ SQM}$
 2. $1.00' \times 1.00' = 1.00' \text{ SQM}$
 3. $1.00' \times 1.00' = 1.00' \text{ SQM}$
- TOTAL** = 3.00' SQM

- RECREATION STAR AREA DIAGRAM FOR GROUND FL.**
SCALE 1/300
1. $1.00' \times 1.00' = 1.00' \text{ SQM}$
 2. $1.00' \times 1.00' = 1.00' \text{ SQM}$
 3. $1.00' \times 1.00' = 1.00' \text{ SQM}$
 4. $1.00' \times 1.00' = 1.00' \text{ SQM}$
 5. $1.00' \times 1.00' = 1.00' \text{ SQM}$
 6. $1.00' \times 1.00' = 1.00' \text{ SQM}$
 7. $1.00' \times 1.00' = 1.00' \text{ SQM}$
 8. $1.00' \times 1.00' = 1.00' \text{ SQM}$
 9. $1.00' \times 1.00' = 1.00' \text{ SQM}$
 10. $1.00' \times 1.00' = 1.00' \text{ SQM}$
- TOTAL** = 10.00' SQM

STARLETA PASSAGE AREA CALCULATION FOR 1ST TO 14TH FL.

NO.	DESCRIPTION	AREA (SQM)
1	1.00' x 0.28' = 0.28' SQM	0.28
2	1.00' x 0.28' = 0.28' SQM	0.28
3	1.00' x 0.28' = 0.28' SQM	0.28
4	1.00' x 0.28' = 0.28' SQM	0.28
5	1.00' x 0.28' = 0.28' SQM	0.28
6	1.00' x 0.28' = 0.28' SQM	0.28
7	1.00' x 0.28' = 0.28' SQM	0.28
8	1.00' x 0.28' = 0.28' SQM	0.28
9	1.00' x 0.28' = 0.28' SQM	0.28
10	1.00' x 0.28' = 0.28' SQM	0.28
TOTAL		2.80

- STREET AREA DIAGRAM FOR GROUND FLOOR.**
SCALE 1/300
1. $1.00' \times 1.00' = 1.00' \text{ SQM}$
- TOTAL** = 1.00' SQM

RECREATION STAR AREA CALCULATION FOR GROUND FLOOR.
SCALE 1/300

NO.	DESCRIPTION	AREA (SQM)
1	1.00' x 1.00' = 1.00' SQM	1.00
2	1.00' x 1.00' = 1.00' SQM	1.00
3	1.00' x 1.00' = 1.00' SQM	1.00
TOTAL		3.00

The specialty civil engineering...
SHEET NO-1/2

BALCONY AREA STATEMENT

FLOOR	NO. OF BALCONY	AREA (SQM)
1ST	1	1.00
2ND	1	1.00
3RD	1	1.00
4TH	1	1.00
5TH	1	1.00
6TH	1	1.00
7TH	1	1.00
8TH	1	1.00
11TH	1	1.00
13TH	1	1.00
14TH	1	1.00
TOTAL		14.00

BUILT UP AREA STATEMENT

NO.	DESCRIPTION	AREA (SQM)
1	1.00' x 1.00' = 1.00' SQM	1.00
2	1.00' x 1.00' = 1.00' SQM	1.00
3	1.00' x 1.00' = 1.00' SQM	1.00
4	1.00' x 1.00' = 1.00' SQM	1.00
5	1.00' x 1.00' = 1.00' SQM	1.00
6	1.00' x 1.00' = 1.00' SQM	1.00
7	1.00' x 1.00' = 1.00' SQM	1.00
8	1.00' x 1.00' = 1.00' SQM	1.00
9	1.00' x 1.00' = 1.00' SQM	1.00
10	1.00' x 1.00' = 1.00' SQM	1.00
TOTAL		14.00

CONSTRUCTION AREA STATEMENT

NO.	DESCRIPTION	AREA (SQM)
1	1.00' x 1.00' = 1.00' SQM	1.00
2	1.00' x 1.00' = 1.00' SQM	1.00
3	1.00' x 1.00' = 1.00' SQM	1.00
4	1.00' x 1.00' = 1.00' SQM	1.00
5	1.00' x 1.00' = 1.00' SQM	1.00
6	1.00' x 1.00' = 1.00' SQM	1.00
7	1.00' x 1.00' = 1.00' SQM	1.00
8	1.00' x 1.00' = 1.00' SQM	1.00
9	1.00' x 1.00' = 1.00' SQM	1.00
10	1.00' x 1.00' = 1.00' SQM	1.00
TOTAL		14.00

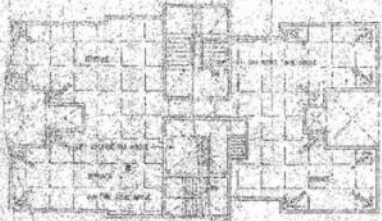
CONSTRUCTION AREA STATEMENT

NO.	DESCRIPTION	AREA (SQM)
1	1.00' x 1.00' = 1.00' SQM	1.00
2	1.00' x 1.00' = 1.00' SQM	1.00
3	1.00' x 1.00' = 1.00' SQM	1.00
4	1.00' x 1.00' = 1.00' SQM	1.00
5	1.00' x 1.00' = 1.00' SQM	1.00
6	1.00' x 1.00' = 1.00' SQM	1.00
7	1.00' x 1.00' = 1.00' SQM	1.00
8	1.00' x 1.00' = 1.00' SQM	1.00
9	1.00' x 1.00' = 1.00' SQM	1.00
10	1.00' x 1.00' = 1.00' SQM	1.00
TOTAL		14.00

TRUE COPY RECEIVED

PREPARED BY: [Signature]

CHECKED BY: [Signature]



TERRACE FLOOR



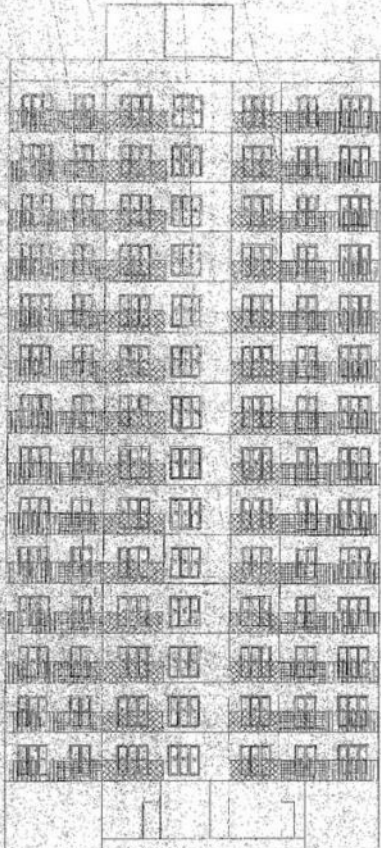
BLOCK PLAN

STAMP OF APPROVALS OF PLAN VP NO. 8427

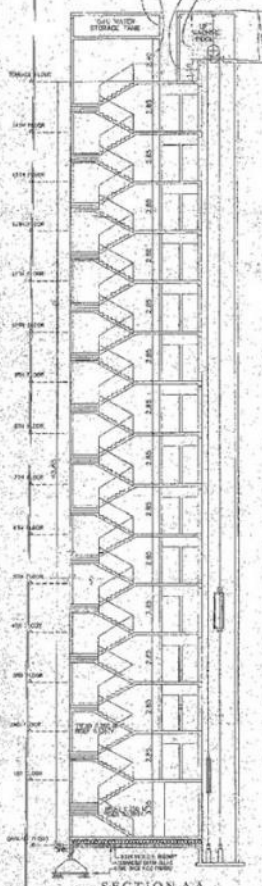
The engineer herein is approved by the Government of India as a qualified person for the purpose of this Act.



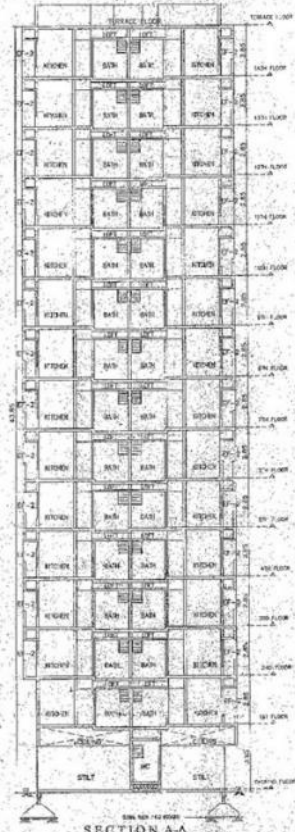
SECTION NO. 1
 SHEET NO. 1
 SHEET NO. 2/2



ELEVATION



SECTION A-A



SECTION A-A

PARKING AREA STATEMENT

S.N.	DESCRIPTION	NO. OF SPACES	AREA (SQ. METERS)	NO. OF SPACES	AREA (SQ. METERS)
1	FOR THE BUILDING	16	16.00	16	16.00
2	FOR THE BUILDING	16	16.00	16	16.00
3	FOR THE BUILDING	16	16.00	16	16.00
4	FOR THE BUILDING	16	16.00	16	16.00
TOTAL		64	64.00	64	64.00

DESCRIPTION OF PROPOSAL & PROPERTY
 PROPOSED INDUSTRIAL BUILDING ON SITE NO. 1234/56/77
 IN VILLAGE - ... DISTRICT - ...

NAME OF OWNER/APPLICANT: **MR. DEEPAK P. JOSHI**

NAME OF ARCHITECT: **SANKAR & ASSOCIATES**

DATE: 28/05/2018

SCALE: AS SHOWN

PROJECT NO.: ...

APPROVED BY: ...

SANKAR & ASSOCIATES
 ARCHITECTS & ENGINEERS
 1234/56/77, ...
 ...

EN-COM
 ENGINEERING CONSULTANTS
 ...