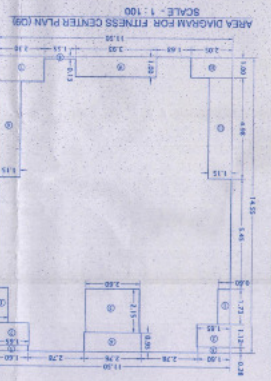


BUILT UP AREA CALCULATION FOR GROUND FLOOR PLAN (G9)

NET BUILT UP AREA FOR G.F. (G9)	=	9622	SQ.MT.
ADD CIRCULAR AREA	=	136	SQ.MT.
ADD BALCONY AREA	=	730	SQ.MT.
NET BUILT UP AREA	=	9622	SQ.MT.

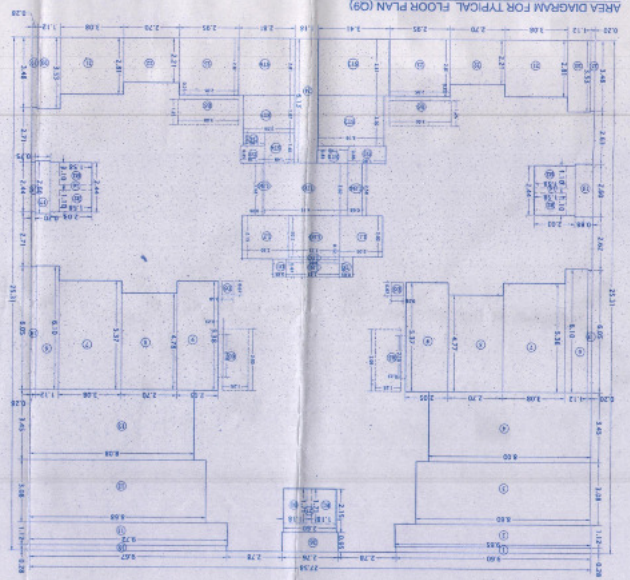
BALCONY AREA CALCULATION FOR GROUND FLOOR

TOTAL BALCONY AREA	=	136	SQ.MT.
MINUS BALCONY AREA	=	136	SQ.MT.
NET BALCONY AREA	=	730	SQ.MT.



BUILT UP AREA CALCULATION FOR FITNESS CENTER

NET BUILT UP AREA FOR G.F. (C9)	=	9622	SQ.MT.
ADD CIRCULAR AREA	=	136	SQ.MT.
ADD BALCONY AREA	=	730	SQ.MT.
NET BUILT UP AREA	=	9622	SQ.MT.



BUILT UP AREA SUMMARY (G9)

FLOOR	Built Up Area	Net Area	Area
1st	292.71	292.71	292.71
2nd	292.71	292.71	292.71
3rd	292.71	292.71	292.71
4th	292.71	292.71	292.71
5th	292.71	292.71	292.71
6th	292.71	292.71	292.71
7th	292.71	292.71	292.71
8th	292.71	292.71	292.71
9th	292.71	292.71	292.71
10th	292.71	292.71	292.71
11th	292.71	292.71	292.71
12th	292.71	292.71	292.71
13th	292.71	292.71	292.71
14th	292.71	292.71	292.71
15th	292.71	292.71	292.71
16th	292.71	292.71	292.71
17th	292.71	292.71	292.71
18th	292.71	292.71	292.71
19th	292.71	292.71	292.71
20th	292.71	292.71	292.71
21st	292.71	292.71	292.71
22nd	292.71	292.71	292.71
23rd	292.71	292.71	292.71
24th	292.71	292.71	292.71
25th	292.71	292.71	292.71
26th	292.71	292.71	292.71
27th	292.71	292.71	292.71
28th	292.71	292.71	292.71
29th	292.71	292.71	292.71
30th	292.71	292.71	292.71
31st	292.71	292.71	292.71
32nd	292.71	292.71	292.71
33rd	292.71	292.71	292.71
34th	292.71	292.71	292.71
35th	292.71	292.71	292.71
36th	292.71	292.71	292.71
37th	292.71	292.71	292.71
38th	292.71	292.71	292.71
39th	292.71	292.71	292.71
40th	292.71	292.71	292.71
41st	292.71	292.71	292.71
42nd	292.71	292.71	292.71
43rd	292.71	292.71	292.71
44th	292.71	292.71	292.71
45th	292.71	292.71	292.71
46th	292.71	292.71	292.71
47th	292.71	292.71	292.71
48th	292.71	292.71	292.71
49th	292.71	292.71	292.71
50th	292.71	292.71	292.71
51st	292.71	292.71	292.71
52nd	292.71	292.71	292.71
53rd	292.71	292.71	292.71
54th	292.71	292.71	292.71
55th	292.71	292.71	292.71
56th	292.71	292.71	292.71
57th	292.71	292.71	292.71
58th	292.71	292.71	292.71
59th	292.71	292.71	292.71
60th	292.71	292.71	292.71
61st	292.71	292.71	292.71
62nd	292.71	292.71	292.71
63rd	292.71	292.71	292.71
64th	292.71	292.71	292.71
65th	292.71	292.71	292.71
66th	292.71	292.71	292.71
67th	292.71	292.71	292.71
68th	292.71	292.71	292.71
69th	292.71	292.71	292.71
70th	292.71	292.71	292.71
71st	292.71	292.71	292.71
72nd	292.71	292.71	292.71
73rd	292.71	292.71	292.71
74th	292.71	292.71	292.71
75th	292.71	292.71	292.71
76th	292.71	292.71	292.71
77th	292.71	292.71	292.71
78th	292.71	292.71	292.71
79th	292.71	292.71	292.71
80th	292.71	292.71	292.71
81st	292.71	292.71	292.71
82nd	292.71	292.71	292.71
83rd	292.71	292.71	292.71
84th	292.71	292.71	292.71
85th	292.71	292.71	292.71
86th	292.71	292.71	292.71
87th	292.71	292.71	292.71
88th	292.71	292.71	292.71
89th	292.71	292.71	292.71
90th	292.71	292.71	292.71
91st	292.71	292.71	292.71
92nd	292.71	292.71	292.71
93rd	292.71	292.71	292.71
94th	292.71	292.71	292.71
95th	292.71	292.71	292.71
96th	292.71	292.71	292.71
97th	292.71	292.71	292.71
98th	292.71	292.71	292.71
99th	292.71	292.71	292.71
100th	292.71	292.71	292.71

BUILT UP AREA CALCULATION FOR TYPICAL FLOOR PLAN (T9)

NET BUILT UP AREA FOR TYPICAL F.L.	=	292.71	SQ.MT.
ADD CIRCULAR AREA	=	136	SQ.MT.
ADD BALCONY AREA	=	730	SQ.MT.
NET BUILT UP AREA	=	292.71	SQ.MT.

BUILT UP AREA CALCULATION FOR TYPICAL FLOOR PLAN (T9)

NET BUILT UP AREA FOR TYPICAL F.L.	=	292.71	SQ.MT.
ADD CIRCULAR AREA	=	136	SQ.MT.
ADD BALCONY AREA	=	730	SQ.MT.
NET BUILT UP AREA	=	292.71	SQ.MT.

BUILT UP AREA CALCULATION FOR TYPICAL FLOOR PLAN (T9)

NET BUILT UP AREA FOR TYPICAL F.L.	=	292.71	SQ.MT.
ADD CIRCULAR AREA	=	136	SQ.MT.
ADD BALCONY AREA	=	730	SQ.MT.
NET BUILT UP AREA	=	292.71	SQ.MT.

BUILT UP AREA CALCULATION FOR TYPICAL FLOOR PLAN (T9)

NET BUILT UP AREA FOR TYPICAL F.L.	=	292.71	SQ.MT.
ADD CIRCULAR AREA	=	136	SQ.MT.
ADD BALCONY AREA	=	730	SQ.MT.
NET BUILT UP AREA	=	292.71	SQ.MT.

BUILT UP AREA CALCULATION FOR TYPICAL FLOOR PLAN (T9)

NET BUILT UP AREA FOR TYPICAL F.L.	=	292.71	SQ.MT.
ADD CIRCULAR AREA	=	136	SQ.MT.
ADD BALCONY AREA	=	730	SQ.MT.
NET BUILT UP AREA	=	292.71	SQ.MT.

BUILT UP AREA CALCULATION FOR TYPICAL FLOOR PLAN (T9)

NET BUILT UP AREA FOR TYPICAL F.L.	=	292.71	SQ.MT.
ADD CIRCULAR AREA	=	136	SQ.MT.
ADD BALCONY AREA	=	730	SQ.MT.
NET BUILT UP AREA	=	292.71	SQ.MT.

FORM INFORMATION

Scale	1:100
Sheet No.	01/01
Project No.	01/01
Client	01/01

CA / ARCHITECT
PRADIP KAMBLE & ASSOCIATES
PRACTICE ADDRESS: ...
REGISTERED ARCHITECT

ARCHITECT
M/S. GEMER REALTY & TECHNOLOGIES PVT. LTD.
SIGNATURE OF OWNER / P.O. HOLDER
ADDRESS OF DEVELOPER
M/S. GEMER REALTY & TECHNOLOGIES PVT. LTD.

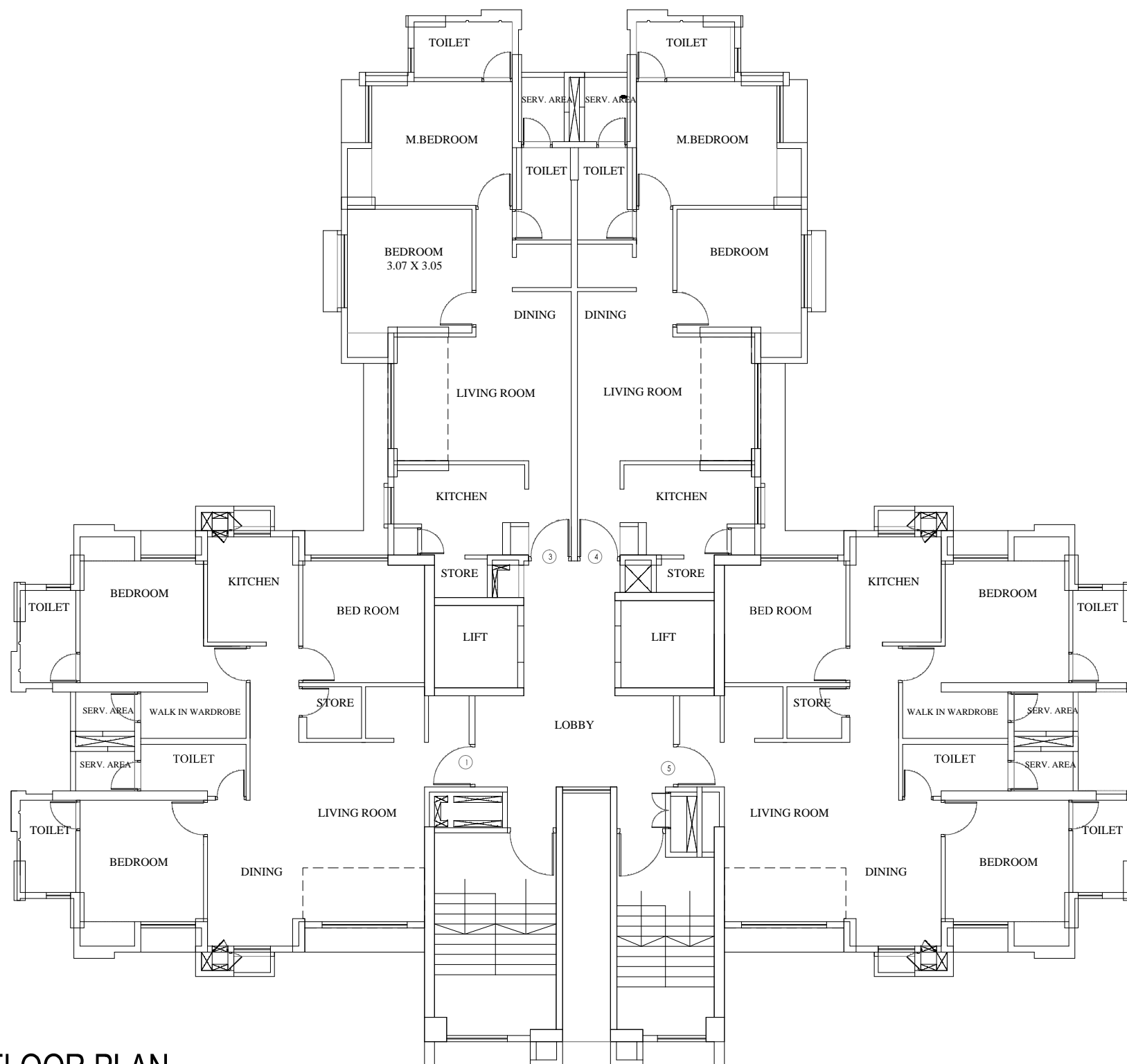
NAME OF OWNER
M/S. GEMER REALTY & TECHNOLOGIES PVT. LTD.
DESCRIPTION OF PROPOSAL
PROPOSED 1 AND 2 STOREY BUILT UP AREAS ON 1000 SQ.MT. LAND AT ...

NET BUILT UP AREA FOR TYPICAL F.L.
ADD CIRCULAR AREA
ADD BALCONY AREA
NET BUILT UP AREA

NET BUILT UP AREA FOR TYPICAL F.L.
ADD CIRCULAR AREA
ADD BALCONY AREA
NET BUILT UP AREA

NET BUILT UP AREA FOR TYPICAL F.L.
ADD CIRCULAR AREA
ADD BALCONY AREA
NET BUILT UP AREA





TYPICAL FLOOR PLAN -
(16TH FLOOR)

LODHA AMARA ,THANE	WING-11	FLOOR _____	FLAT NO. _____
-------------------------------------	----------------	--------------------	-----------------------

NOTE:PLAN NOT TO SCALE. APPROVAL PLAN: WING Q9-15th FLR.

NOTE:THIS DWG DOES NOT MATCH WITH APPROVAL PLAN .