

STAMP OF APPROVALS OF PLAN

GOKHIWARE VP NO-0329,0509,0815

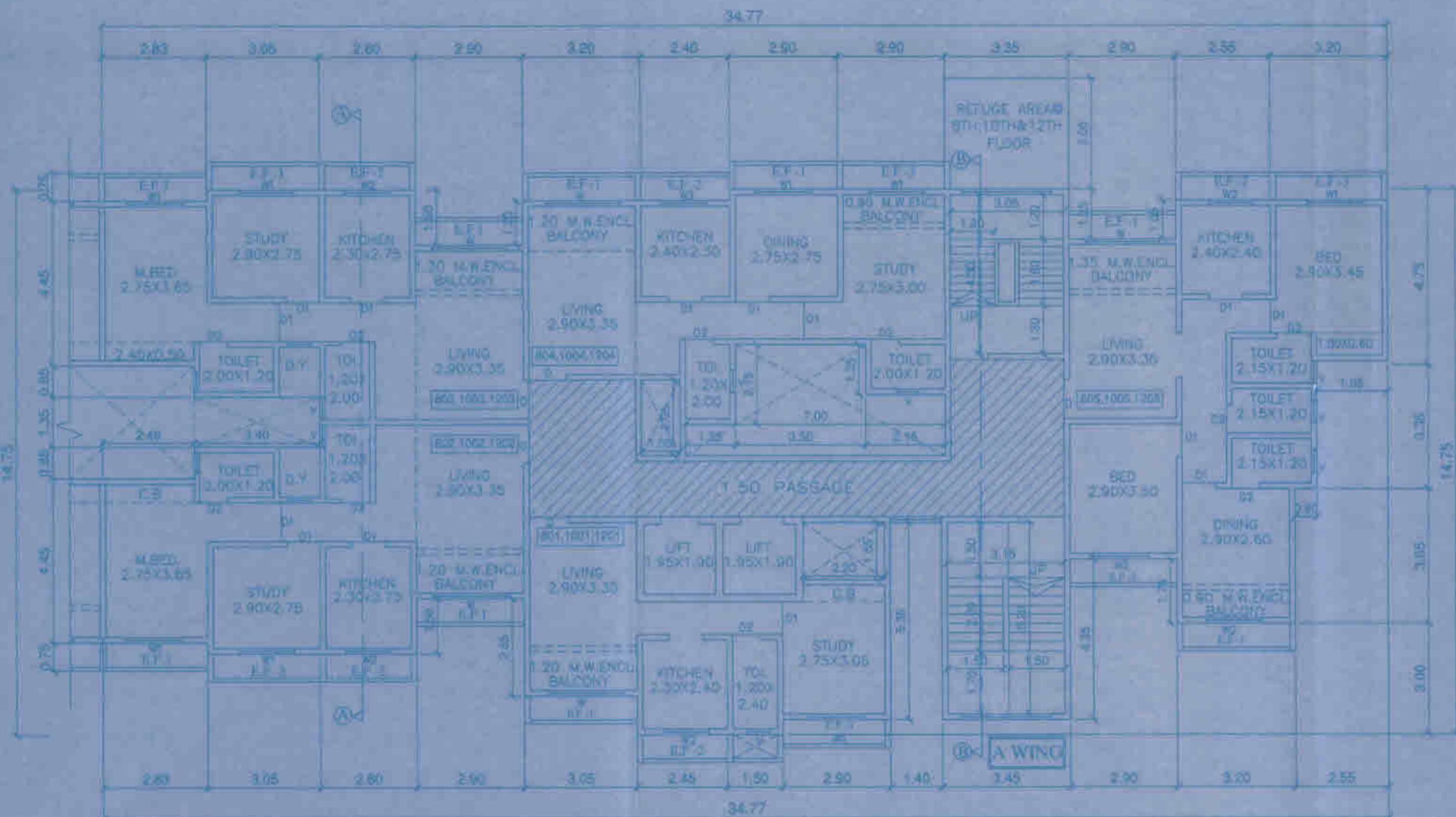
The amended plan duly approved herewith supersedes all the earlier approved plans

SECTOR-01  
BLDG.NO.7  
WING - A  
SHEET NO-1/2

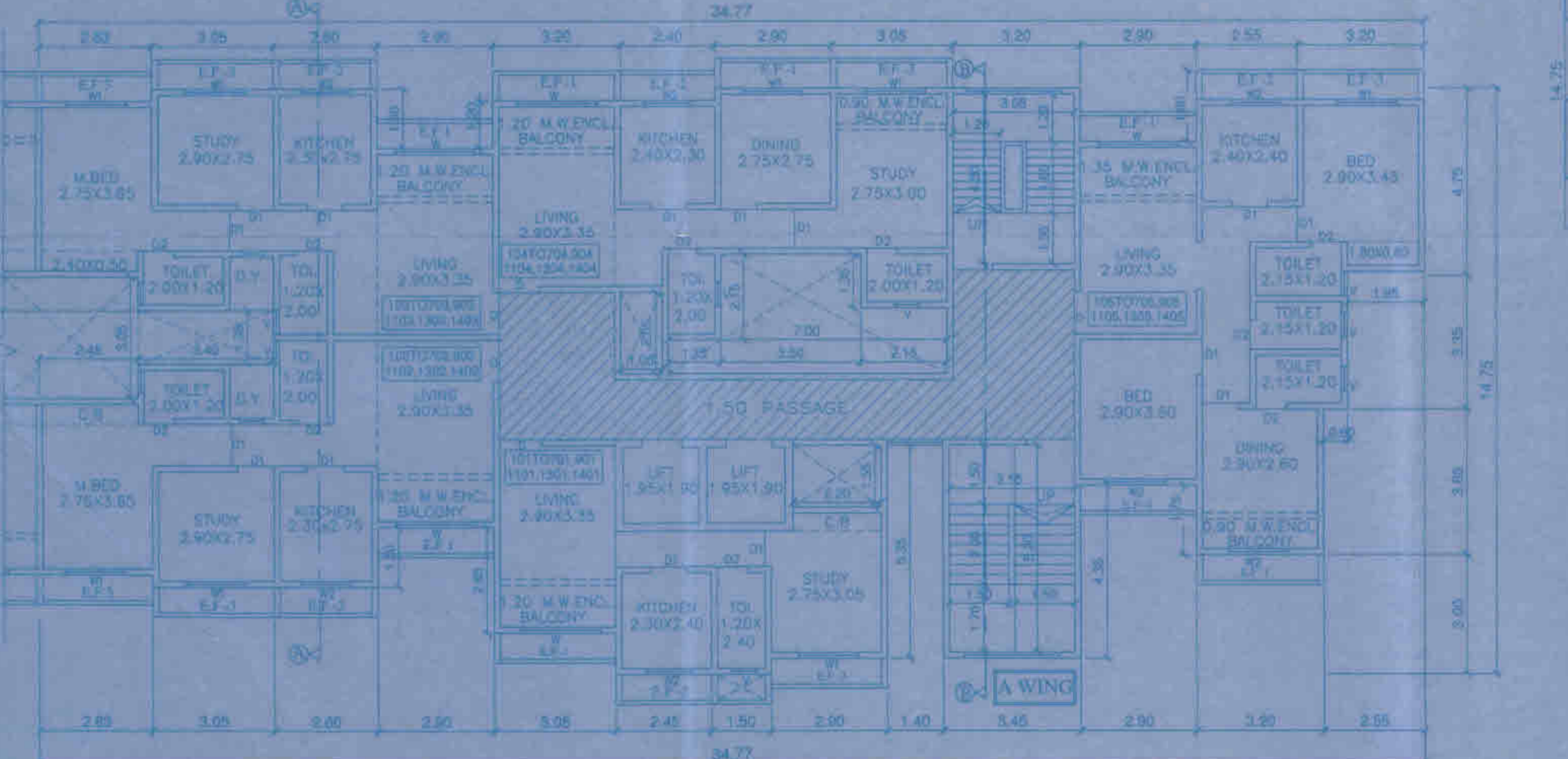
THIS PLAN SHALL NOT BE CONSIDERED AS PROOF OF OWNERSHIP FOR ANY DISPUTES IN ANY COURT OF LAW



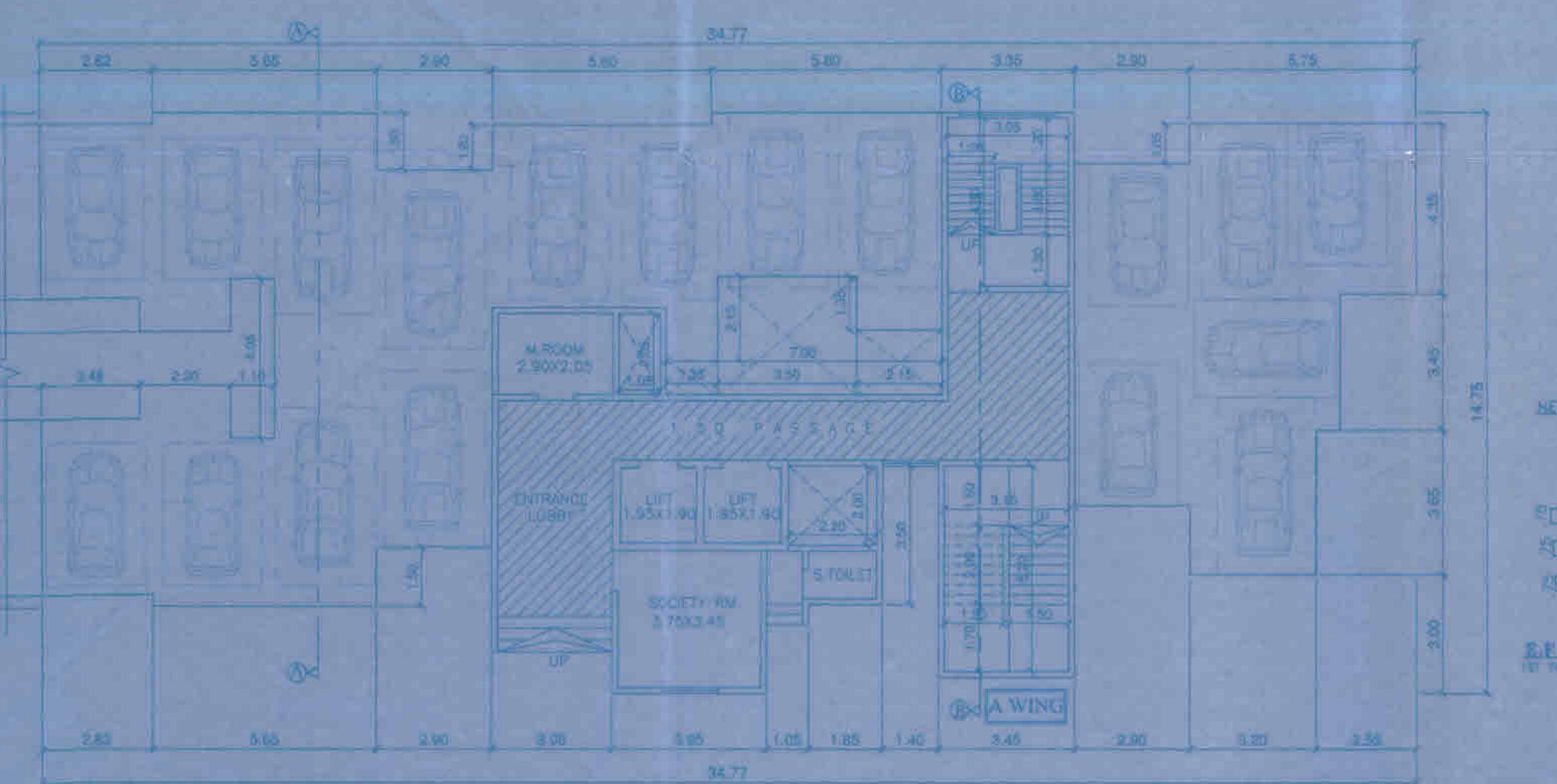
Approved as amended to Subject to the Conditions mentioned in this Official Letter No. VVCMCT/PLANNING/VP NO-0329,0509,0815/0189 dated 15/11/2014  
Deputy Director, Town Planning  
Varanasi City Municipal Corporation  
(Vinc. CE)



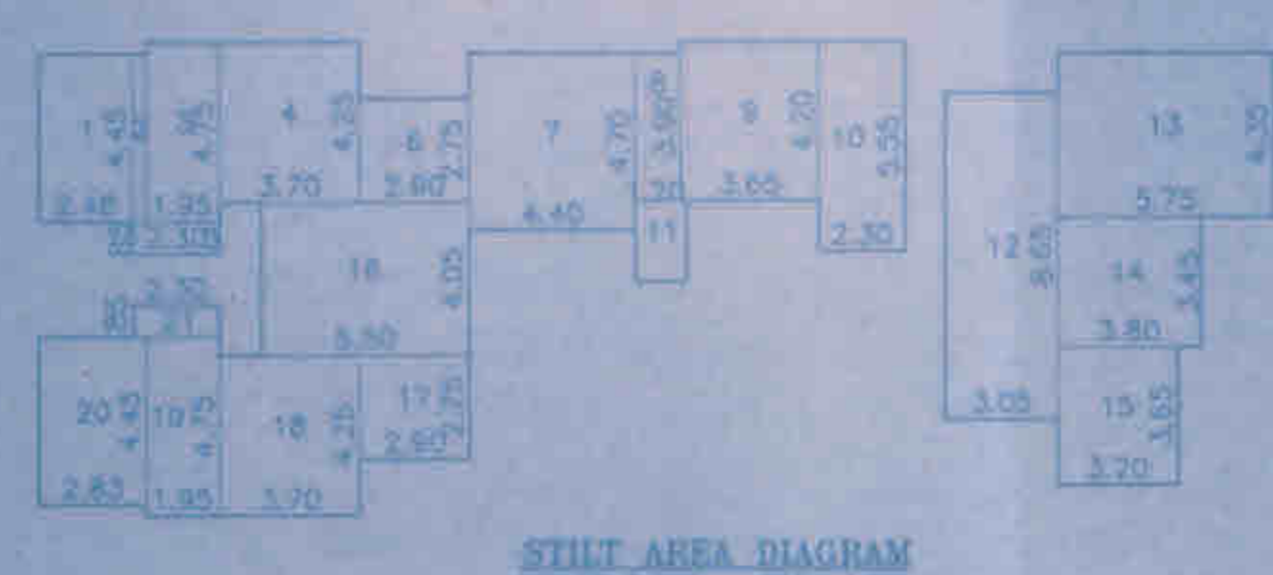
8TH, 10TH & 12TH FLOOR SCALE 1:100



TYPICAL FLOOR PLAN 10TH TO 14TH FLOOR SCALE 1:100



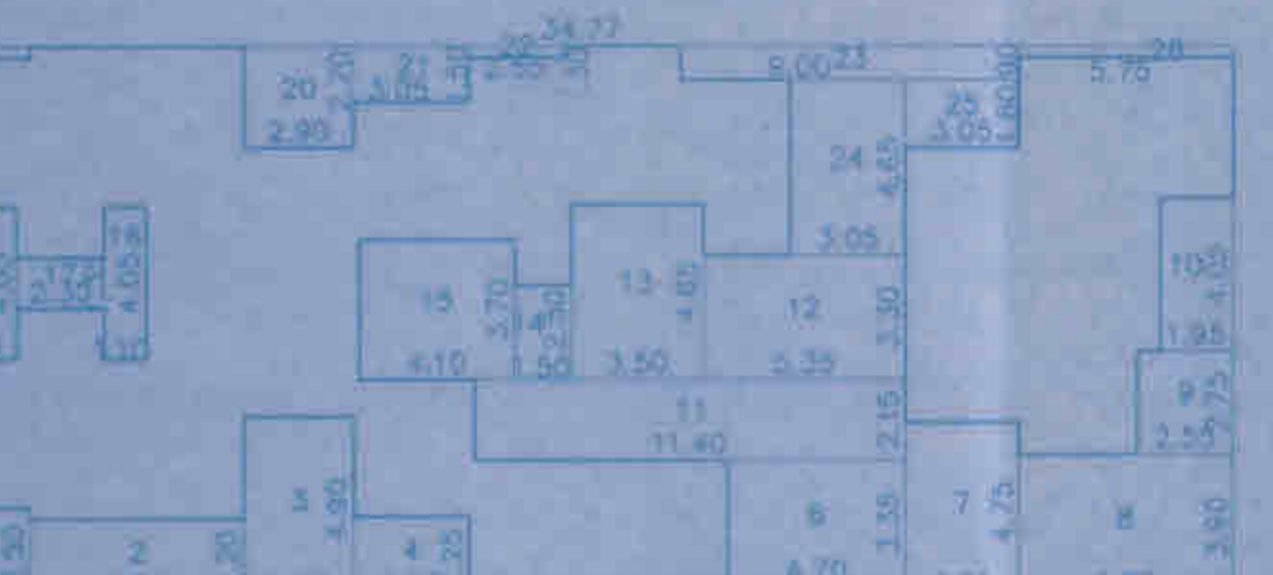
GROUND FLOOR PLAN SCALE 1:100



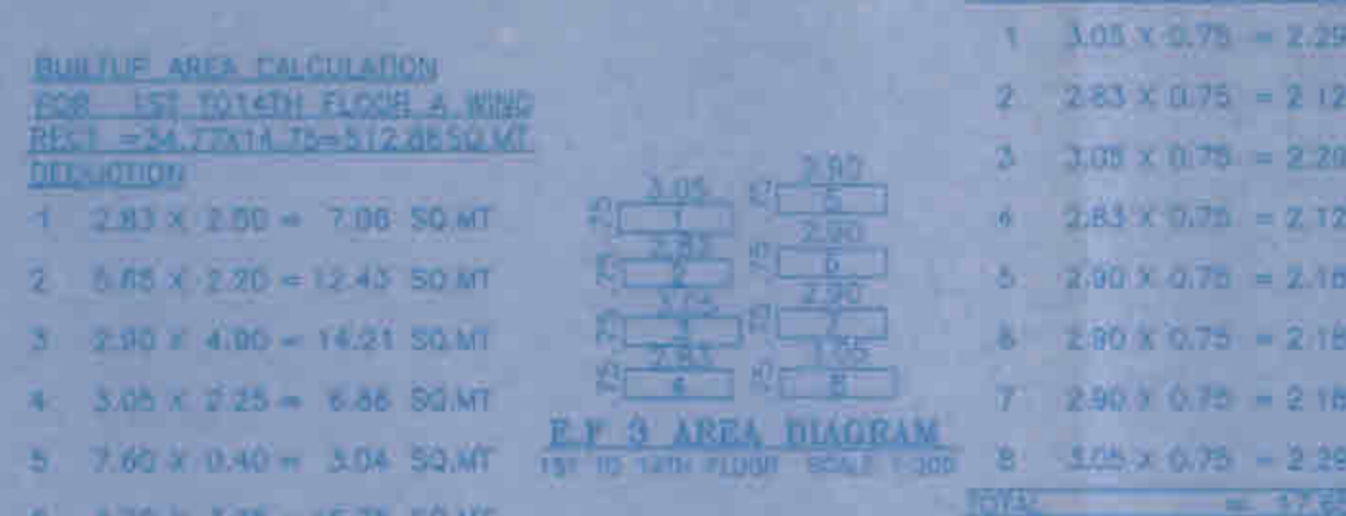
STILT AREA DIAGRAM GROUND FLOOR SCALE 1:200



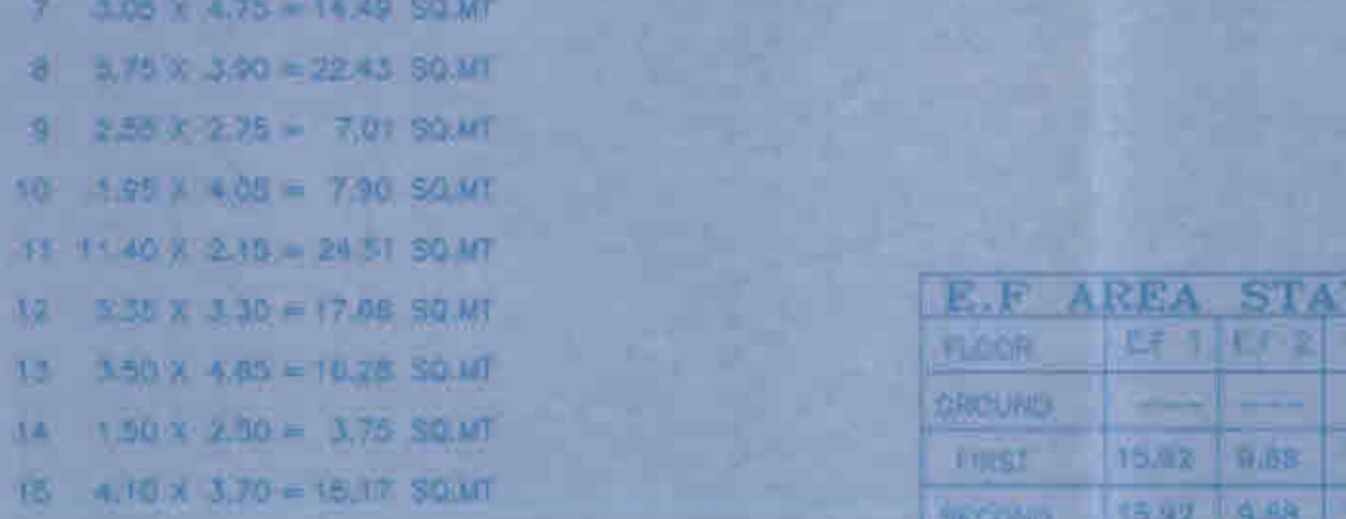
STAIRCASE LOBBY AREA DIAGRAM GROUND FLOOR SCALE 1:200



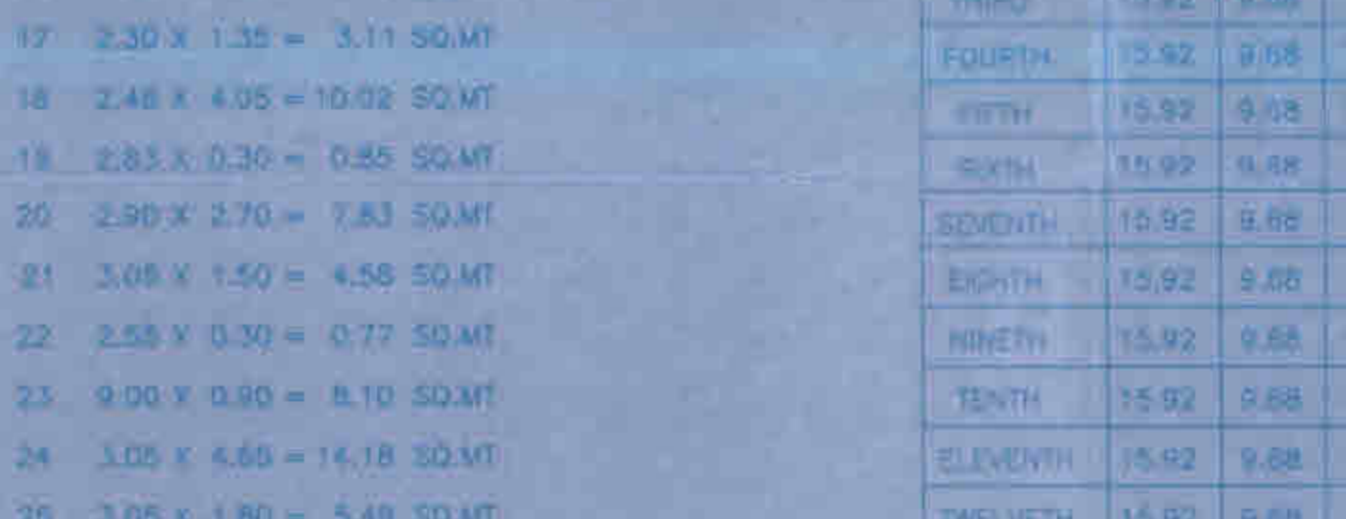
BUILT UP AREA DIAGRAM 10TH TO 14TH FLOOR SCALE 1:200



E.F. 3 AREA DIAGRAM 1ST TO 14TH FLOOR SCALE 1:200



E.F. 2 AREA DIAGRAM 1ST TO 14TH FLOOR SCALE 1:200



E.F. 1 AREA DIAGRAM 1ST TO 14TH FLOOR SCALE 1:200

STILT AREA CALCULATION GROUND FLOOR A WING  
1 2.48 X 4.45 = 11.01 SQ.MT  
2 0.35 X 4.45 = 1.56 SQ.MT  
3 1.90 X 4.75 = 9.06 SQ.MT  
4 3.70 X 4.25 = 15.72 SQ.MT  
5 2.30 X 0.85 = 1.96 SQ.MT  
6 2.90 X 2.75 = 7.98 SQ.MT  
7 4.40 X 4.70 = 20.68 SQ.MT  
8 1.20 X 3.90 = 4.68 SQ.MT  
9 3.65 X 4.20 = 15.33 SQ.MT  
10 2.20 X 3.55 = 7.81 SQ.MT  
11 1.25 X 2.15 = 2.69 SQ.MT  
12 3.05 X 8.65 = 26.38 SQ.MT  
13 5.75 X 4.35 = 24.91 SQ.MT  
14 3.50 X 3.45 = 12.11 SQ.MT  
15 3.20 X 3.65 = 11.68 SQ.MT  
16 3.50 X 4.05 = 14.18 SQ.MT  
17 2.90 X 2.75 = 7.98 SQ.MT  
18 3.70 X 4.25 = 15.72 SQ.MT  
19 1.90 X 4.75 = 9.06 SQ.MT  
20 2.85 X 4.45 = 12.58 SQ.MT  
21 2.30 X 0.85 = 1.96 SQ.MT  
TOTAL = 249.63 SQ.M

S ROOMS TO AREA DIAGRAM GROUND FLOOR SCALE 1:200

FIRE STAIR AREA DIAGRAM GROUND TO 14TH FLOOR SCALE 1:200

S ROOMS TO AREA CALCULATION GROUND FLOOR A WING  
1 3.95 X 3.00 = 11.85 SQ.MT  
2 0.85 X 1.85 = 1.57 SQ.MT  
3 0.80 X 2.00 = 1.60 SQ.MT  
4 1.85 X 1.50 = 2.78 SQ.MT  
TOTAL = 17.80 SQ.M

FIRE STAIR AREA CALCULATION GROUND TO FOURTEENTH FLOOR A WING  
1 3.20 X 1.55 = 4.96 SQ.MT  
2 3.00 X 3.25 = 9.75 SQ.MT  
TOTAL = 14.71 SQ.M

STAIR CASE & LIFT CALCULATION FIRST TO FOURTEENTH FLOOR A WING  
1 3.05 X 3.70 = 11.29 SQ.MT  
2 4.35 X 3.80 = 16.53 SQ.MT  
3 7.00 X 1.80 = 12.60 SQ.MT  
4 3.20 X 1.65 = 5.28 SQ.MT  
5 3.05 X 0.85 = 2.60 SQ.MT  
6 3.30 X 1.00 = 3.30 SQ.MT  
7 3.45 X 4.30 = 14.84 SQ.MT  
TOTAL = 67.06 SQ.M

REFUGE AREA DIAGRAM 8TH, CHANGERY FLOOR SCALE 1:200

REFUGE AREA CALCULATION 8TH, 10TH & 12TH FLOOR A WING  
1 3.35 X 3.00 = 10.05 SQ.MT  
TOTAL = 10.05 SQ.MT

METER ROOM AREA DIAGRAM 8TH, 10TH & 12TH FLOOR SCALE 1:200  
METER ROOM AREA CALCULATION GROUND FLOOR A WING  
1 3.20 X 2.20 = 7.04 SQ.MT  
TOTAL = 7.04 SQ.MT

BALCONY AREA STATEMENT A WING

| FLOOR             | NET BUILT UP AREA | PROPOSED BALCONY AREA | PROPOSED BALCONY AREA | PROPOSED BALCONY AREA | PROPOSED BALCONY AREA | EXCLUDE |
|-------------------|-------------------|-----------------------|-----------------------|-----------------------|-----------------------|---------|
| GROUND FLOOR      |                   |                       |                       |                       |                       |         |
| 1ST TO 14TH FLOOR | 263.19            | 36.32                 | 36.32                 | 36.32                 | 36.32                 |         |
| TOTAL             | 263.19            | 36.32                 | 36.32                 | 36.32                 | 36.32                 |         |

BUILT UP AREA STATEMENT

| USE         | GROUND | FIRST  | SECOND | THIRD  | FOURTH | FIFTH  | SIXTH  | SEVENTH | EIGHTH | NINTH  | TENTH  | ELEVENTH | TWELVE | THIRTEEN | FOURTEEN | TOTAL  |
|-------------|--------|--------|--------|--------|--------|--------|--------|---------|--------|--------|--------|----------|--------|----------|----------|--------|
| COMMERCIAL  | 0.00   | 0.00   | 0.00   | 0.00   | 0.00   | 0.00   | 0.00   | 0.00    | 0.00   | 0.00   | 0.00   | 0.00     | 0.00   | 0.00     | 0.00     | 0.00   |
| RESIDENTIAL | 0.00   | 263.19 | 263.19 | 263.19 | 263.19 | 263.19 | 263.19 | 263.19  | 263.19 | 263.19 | 263.19 | 263.19   | 263.19 | 263.19   | 263.19   | 263.19 |
| EXCESS-BAL  | 0.00   | 0.00   | 0.00   | 0.00   | 0.00   | 0.00   | 0.00   | 0.00    | 0.00   | 0.00   | 0.00   | 0.00     | 0.00   | 0.00     | 0.00     | 0.00   |
| TOTAL       | 0.00   | 263.19 | 263.19 | 263.19 | 263.19 | 263.19 | 263.19 | 263.19  | 263.19 | 263.19 | 263.19 | 263.19   | 263.19 | 263.19   | 263.19   | 263.19 |

E.F. AREA STATEMENT

| FLOOR    | E.F. 1 | E.F. 2 | E.F. 3 | TOTAL  |
|----------|--------|--------|--------|--------|
| GROUND   |        |        |        |        |
| FIRST    | 15.82  | 9.88   | 17.85  | 43.55  |
| SECOND   | 15.82  | 9.88   | 17.85  | 43.55  |
| THIRD    | 15.82  | 9.88   | 17.85  | 43.55  |
| FOURTH   | 15.82  | 9.88   | 17.85  | 43.55  |
| FIFTH    | 15.82  | 9.88   | 17.85  | 43.55  |
| SIXTH    | 15.82  | 9.88   | 17.85  | 43.55  |
| SEVENTH  | 15.82  | 9.88   | 17.85  | 43.55  |
| EIGHTH   | 15.82  | 9.88   | 17.85  | 43.55  |
| NINTH    | 15.82  | 9.88   | 17.85  | 43.55  |
| TENTH    | 15.82  | 9.88   | 17.85  | 43.55  |
| ELEVENTH | 15.82  | 9.88   | 17.85  | 43.55  |
| TWELVE   | 15.82  | 9.88   | 17.85  | 43.55  |
| THIRTEEN | 15.82  | 9.88   | 17.85  | 43.55  |
| FOURTEEN | 15.82  | 9.88   | 17.85  | 43.55  |
| TOTAL    | 224.88 | 135.52 | 247.10 | 607.50 |

CONSTRUCTION AREA STATEMENT

| CLAUSE NO. | FLOOR             | TOTAL (A) | STAIRCASE (B) | BAL.    | C.B.   | DRY YARD | TOTAL FREE OF FSI (C) | STRT.   | METER ROOM | FIRE-ESCAPE | REFUGE AREA | SERVANT ROOM | TOTAL FREE OF FSI (C) | GRAND TOTAL (A+B+C) |         |
|------------|-------------------|-----------|---------------|---------|--------|----------|-----------------------|---------|------------|-------------|-------------|--------------|-----------------------|---------------------|---------|
|            | GROUND            | 0.00      | 0.00          | 0.00    | 0.00   | 0.00     | 0.00                  | 0.00    | 0.00       | 0.00        | 0.00        | 0.00         | 0.00                  | 0.00                |         |
|            | FIRST             | 263.19    | 263.19        | 263.19  | 263.19 | 263.19   | 263.19                | 263.19  | 263.19     | 263.19      | 263.19      | 263.19       | 263.19                | 263.19              |         |
|            | SECOND            | 263.19    | 263.19        | 263.19  | 263.19 | 263.19   | 263.19                | 263.19  | 263.19     | 263.19      | 263.19      | 263.19       | 263.19                | 263.19              |         |
|            | THIRD             | 263.19    | 263.19        | 263.19  | 263.19 | 263.19   | 263.19                | 263.19  | 263.19     | 263.19      | 263.19      | 263.19       | 263.19                | 263.19              |         |
|            | FOURTH            | 263.19    | 263.19        | 263.19  | 263.19 | 263.19   | 263.19                | 263.19  | 263.19     | 263.19      | 263.19      | 263.19       | 263.19                | 263.19              |         |
|            | FIFTH             | 263.19    | 263.19        | 263.19  | 263.19 | 263.19   | 263.19                | 263.19  | 263.19     | 263.19      | 263.19      | 263.19       | 263.19                | 263.19              |         |
|            | SIXTH             | 263.19    | 263.19        | 263.19  | 263.19 | 263.19   | 263.19                | 263.19  | 263.19     | 263.19      | 263.19      | 263.19       | 263.19                | 263.19              |         |
|            | SEVENTH           | 263.19    | 263.19        | 263.19  | 263.19 | 263.19   | 263.19                | 263.19  | 263.19     | 263.19      | 263.19      | 263.19       | 263.19                | 263.19              |         |
|            | EIGHTH            | 263.19    | 263.19        | 263.19  | 263.19 | 263.19   | 263.19                | 263.19  | 263.19     | 263.19      | 263.19      | 263.19       | 263.19                | 263.19              |         |
|            | NINTH             | 263.19    | 263.19        | 263.19  | 263.19 | 263.19   | 263.19                | 263.19  | 263.19     | 263.19      | 263.19      | 263.19       | 263.19                | 263.19              |         |
|            | TENTH             | 263.19    | 263.19        | 263.19  | 263.19 | 263.19   | 263.19                | 263.19  | 263.19     | 263.19      | 263.19      | 263.19       | 263.19                | 263.19              |         |
|            | ELEVENTH          | 263.19    | 263.19        | 263.19  | 263.19 | 263.19   | 263.19                | 263.19  | 263.19     | 263.19      | 263.19      | 263.19       | 263.19                | 263.19              |         |
|            | TWELVE            | 263.19    | 263.19        | 263.19  | 263.19 | 263.19   | 263.19                | 263.19  | 263.19     | 263.19      | 263.19      | 263.19       | 263.19                | 263.19              |         |
|            | THIRTEEN          | 263.19    | 263.19        | 263.19  | 263.19 | 263.19   | 263.19                | 263.19  | 263.19     | 263.19      | 263.19      | 263.19       | 263.19                | 263.19              |         |
|            | FOURTEEN          | 263.19    | 263.19        | 263.19  | 263.19 | 263.19   | 263.19                | 263.19  | 263.19     | 263.19      | 263.19      | 263.19       | 263.19                | 263.19              |         |
|            | GRAND TOTAL (A+B) | 3684.86   | 3684.86       | 1014.79 | 324.40 | 66.54    | 41.72                 | 1486.91 | 349.79     | 7.08        | 212.45      | 38.19        | 19.02                 | 516.48              | 5081.88 |

E.F. 1 AREA CALCULATION FIRST TO FOURTEENTH FLOOR A WING  
1 3.20 X 0.75 = 2.40 SQ.MT  
2 3.05 X 0.75 = 2.29 SQ.MT  
3 2.90 X 0.75 = 2.18 SQ.MT  
4 3.70 X 0.75 = 2.78 SQ.MT  
5 3.05 X 0.75 = 2.29 SQ.MT  
6 2.90 X 0.75 = 2.18 SQ.MT  
7 2.90 X 0.75 = 2.18 SQ.MT  
TOTAL = 18.83 SQ.MT

E.F. 4 AREA DIAGRAM 1ST TO 14TH FLOOR SCALE 1:200

E.F. 4 AREA CALCULATION FIRST TO FOURTEENTH FLOOR A WING  
1 1.10 X 1.35 = 1.49 SQ.MT  
2 1.10 X 1.35 = 1.49 SQ.MT  
TOTAL = 2.98 SQ.MT

C.B. AREA DIAGRAM 1ST TO 14TH FLOOR SCALE 1:200

C.B. AREA CALCULATION FIRST TO FOURTEENTH FLOOR A WING  
1 2.48 X 0.50 = 1.24 SQ.MT  
2 2.48 X 0.50 = 1.24 SQ.MT  
3 1.95 X 0.60 = 1.17 SQ.MT  
4 2.35 X 0.45 = 1.06 SQ.MT  
TOTAL = 4.71 SQ.MT

DESCRIPTION OF PROPOSAL & PROPERTY  
PROPOSED GROUP HOUSING SCHEME AT VILLAGE, GOKHIWARE, TALUKA, VARANASI DIST, PALGHAN  
SHRI DEVENDRA K. LAHARI  
JOB NO: 1/175/2014  
DRAWING NO: 1/175A-13 BOD NO-7  
SCALE: AS SHOWN  
DATE: 05/07/14  
DRAWN BY: [Signature]  
CHECKED BY: [Signature]  
DATE: 05/07/14  
SANMI MEHTA & ASSOCIATES  
PALLABANANAT MEHTA  
LICENSED ENGINEER