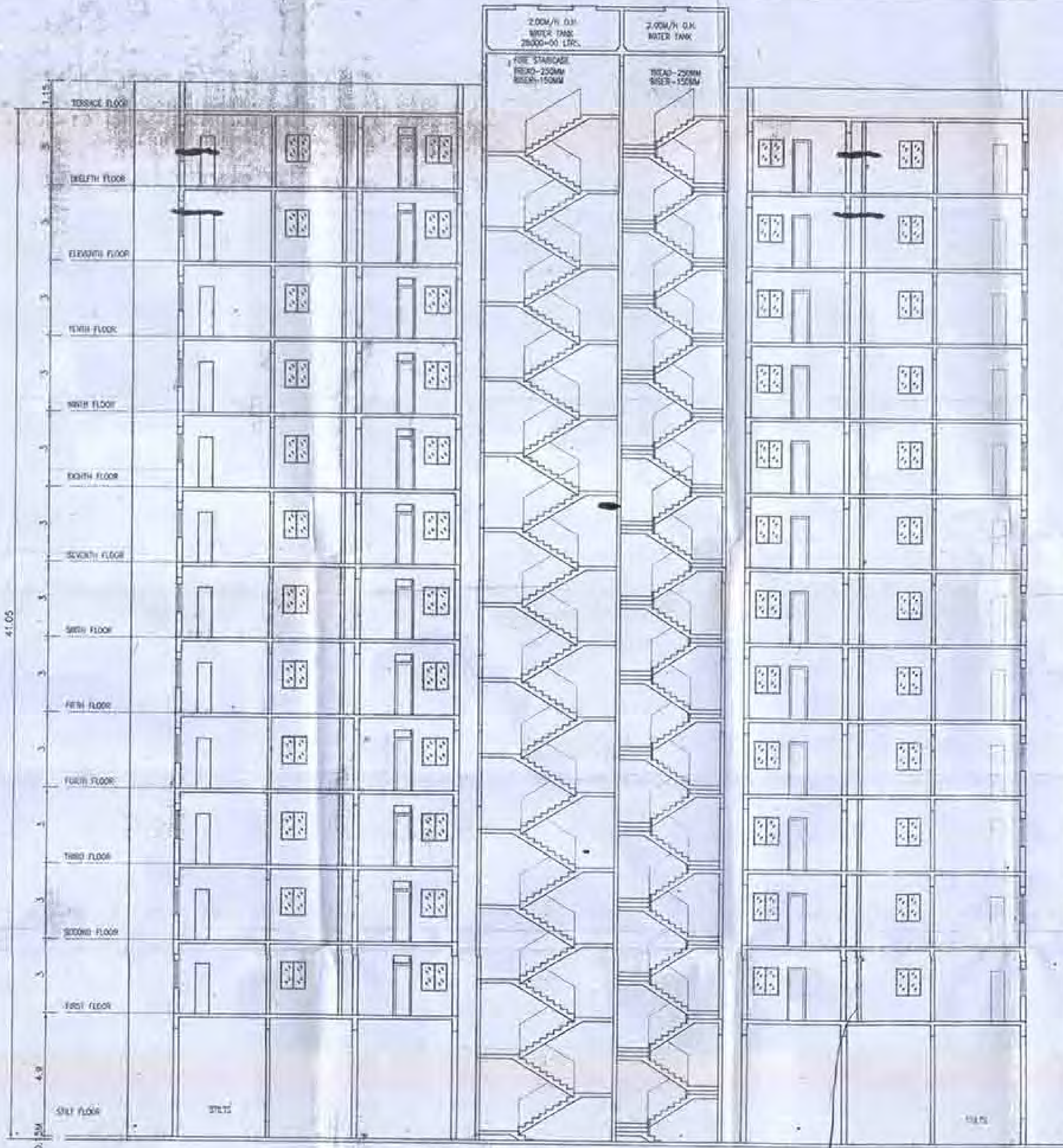


BLDG. NO. 7 (TYPE 'H')  
ELEVATION (SCALE 1/100)



BLDG. NO. 7 (TYPE 'H')  
SECTION AT A/A (SCALE 1/100)

AMENDED PLAN SHEET NO - 10/11

STAMP OF APPROVAL OF PLAN

अभिहित  
 दिनांक 20/06/2024  
 दिनांक 20/06/2024  
 दिनांक 20/06/2024  
 दिनांक 20/06/2024

DOORS AND WINDOWS SCHEDULE

TYPE	SIZE	AREA	DESCRIPTION
D	1.00 X 2.18	2.18	T.W. FRAME PART PANELLED SINGLE LEAF
D1	0.90 X 2.15	1.93	T.W. FRAME PART PANELLED SINGLE LEAF
D2	0.76 X 2.06	1.56	T.W. FRAME PART GLASS AT TOP SINGLE LEAF
W	1.80 X 1.20	2.16	T.W. FRAME PART GLAZED POOR SHUTTERS
W1	1.80 X 1.00	1.80	T.W. FRAME PART GLAZED THREE SHUTTERS
W2	1.00 X 1.00	1.00	T.W. FRAME PART GLAZED TWO SHUTTERS
W3	0.60 X 0.90	0.54	T.W. FRAME GLASS LOUVERS AT 45

NOTES

PROPOSED WORK SHOWN IN RED  
 ALL EXTERNAL AND INTERNAL WALLS ARE 0.15 M THK. AND 0.10 M THK.  
 BRICK MASONRY WALL EXCLUDING PLASTER.  
 ALL TREAD AND RISERS ARE 0.25 M/W AND 0.15 M/W, RESPECTIVELY.

DESCRIPTION OF PROPOSAL AND PROPERTY

PROPOSED COMMERCIAL CUM RESIDENTIAL BUILDING ON PLOT BEARING S.NO-76(OLD) NEW S.NO-22JWG-1/8,1/1,2&3, OLD S.NO-74, NEW S.NO-24H, NO-2(P1), 2(P2), 2(P3), 2(P4), 2(P5), 2(P6), 2(P7), 2(P8), 2(P9), 2(P10), 2(P11), 2(P12), 2(P13), 2(P14), 2(P15), 2(P16), 2(P17), 2(P18), 2(P19), 2(P20), 2(P21), 2(P22), 2(P23), 2(P24), 2(P25), 2(P26), 2(P27), 2(P28), 2(P29), 2(P30), 2(P31), 2(P32), 2(P33), 2(P34), 2(P35), 2(P36), 2(P37), 2(P38), 2(P39), 2(P40), 2(P41), 2(P42), 2(P43), 2(P44), 2(P45), 2(P46), 2(P47), 2(P48), 2(P49), 2(P50), 2(P51), 2(P52), 2(P53), 2(P54), 2(P55), 2(P56), 2(P57), 2(P58), 2(P59), 2(P60), 2(P61), 2(P62), 2(P63), 2(P64), 2(P65), 2(P66), 2(P67), 2(P68), 2(P69), 2(P70), 2(P71), 2(P72), 2(P73), 2(P74), 2(P75), 2(P76), 2(P77), 2(P78), 2(P79), 2(P80), 2(P81), 2(P82), 2(P83), 2(P84), 2(P85), 2(P86), 2(P87), 2(P88), 2(P89), 2(P90), 2(P91), 2(P92), 2(P93), 2(P94), 2(P95), 2(P96), 2(P97), 2(P98), 2(P99), 2(P100), 2(P101), 2(P102), 2(P103), 2(P104), 2(P105), 2(P106), 2(P107), 2(P108), 2(P109), 2(P110), 2(P111), 2(P112), 2(P113), 2(P114), 2(P115), 2(P116), 2(P117), 2(P118), 2(P119), 2(P120), 2(P121), 2(P122), 2(P123), 2(P124), 2(P125), 2(P126), 2(P127), 2(P128), 2(P129), 2(P130), 2(P131), 2(P132), 2(P133), 2(P134), 2(P135), 2(P136), 2(P137), 2(P138), 2(P139), 2(P140), 2(P141), 2(P142), 2(P143), 2(P144), 2(P145), 2(P146), 2(P147), 2(P148), 2(P149), 2(P150), 2(P151), 2(P152), 2(P153), 2(P154), 2(P155), 2(P156), 2(P157), 2(P158), 2(P159), 2(P160), 2(P161), 2(P162), 2(P163), 2(P164), 2(P165), 2(P166), 2(P167), 2(P168), 2(P169), 2(P170), 2(P171), 2(P172), 2(P173), 2(P174), 2(P175), 2(P176), 2(P177), 2(P178), 2(P179), 2(P180), 2(P181), 2(P182), 2(P183), 2(P184), 2(P185), 2(P186), 2(P187), 2(P188), 2(P189), 2(P190), 2(P191), 2(P192), 2(P193), 2(P194), 2(P195), 2(P196), 2(P197), 2(P198), 2(P199), 2(P200), 2(P201), 2(P202), 2(P203), 2(P204), 2(P205), 2(P206), 2(P207), 2(P208), 2(P209), 2(P210), 2(P211), 2(P212), 2(P213), 2(P214), 2(P215), 2(P216), 2(P217), 2(P218), 2(P219), 2(P220), 2(P221), 2(P222), 2(P223), 2(P224), 2(P225), 2(P226), 2(P227), 2(P228), 2(P229), 2(P230), 2(P231), 2(P232), 2(P233), 2(P234), 2(P235), 2(P236), 2(P237), 2(P238), 2(P239), 2(P240), 2(P241), 2(P242), 2(P243), 2(P244), 2(P245), 2(P246), 2(P247), 2(P248), 2(P249), 2(P250), 2(P251), 2(P252), 2(P253), 2(P254), 2(P255), 2(P256), 2(P257), 2(P258), 2(P259), 2(P260), 2(P261), 2(P262), 2(P263), 2(P264), 2(P265), 2(P266), 2(P267), 2(P268), 2(P269), 2(P270), 2(P271), 2(P272), 2(P273), 2(P274), 2(P275), 2(P276), 2(P277), 2(P278), 2(P279), 2(P280), 2(P281), 2(P282), 2(P283), 2(P284), 2(P285), 2(P286), 2(P287), 2(P288), 2(P289), 2(P290), 2(P291), 2(P292), 2(P293), 2(P294), 2(P295), 2(P296), 2(P297), 2(P298), 2(P299), 2(P300), 2(P301), 2(P302), 2(P303), 2(P304), 2(P305), 2(P306), 2(P307), 2(P308), 2(P309), 2(P310), 2(P311), 2(P312), 2(P313), 2(P314), 2(P315), 2(P316), 2(P317), 2(P318), 2(P319), 2(P320), 2(P321), 2(P322), 2(P323), 2(P324), 2(P325), 2(P326), 2(P327), 2(P328), 2(P329), 2(P330), 2(P331), 2(P332), 2(P333), 2(P334), 2(P335), 2(P336), 2(P337), 2(P338), 2(P339), 2(P340), 2(P341), 2(P342), 2(P343), 2(P344), 2(P345), 2(P346), 2(P347), 2(P348), 2(P349), 2(P350), 2(P351), 2(P352), 2(P353), 2(P354), 2(P355), 2(P356), 2(P357), 2(P358), 2(P359), 2(P360), 2(P361), 2(P362), 2(P363), 2(P364), 2(P365), 2(P366), 2(P367), 2(P368), 2(P369), 2(P370), 2(P371), 2(P372), 2(P373), 2(P374), 2(P375), 2(P376), 2(P377), 2(P378), 2(P379), 2(P380), 2(P381), 2(P382), 2(P383), 2(P384), 2(P385), 2(P386), 2(P387), 2(P388), 2(P389), 2(P390), 2(P391), 2(P392), 2(P393), 2(P394), 2(P395), 2(P396), 2(P397), 2(P398), 2(P399), 2(P400), 2(P401), 2(P402), 2(P403), 2(P404), 2(P405), 2(P406), 2(P407), 2(P408), 2(P409), 2(P410), 2(P411), 2(P412), 2(P413), 2(P414), 2(P415), 2(P416), 2(P417), 2(P418), 2(P419), 2(P420), 2(P421), 2(P422), 2(P423), 2(P424), 2(P425), 2(P426), 2(P427), 2(P428), 2(P429), 2(P430), 2(P431), 2(P432), 2(P433), 2(P434), 2(P435), 2(P436), 2(P437), 2(P438), 2(P439), 2(P440), 2(P441), 2(P442), 2(P443), 2(P444), 2(P445), 2(P446), 2(P447), 2(P448), 2(P449), 2(P450), 2(P451), 2(P452), 2(P453), 2(P454), 2(P455), 2(P456), 2(P457), 2(P458), 2(P459), 2(P460), 2(P461), 2(P462), 2(P463), 2(P464), 2(P465), 2(P466), 2(P467), 2(P468), 2(P469), 2(P470), 2(P471), 2(P472), 2(P473), 2(P474), 2(P475), 2(P476), 2(P477), 2(P478), 2(P479), 2(P480), 2(P481), 2(P482), 2(P483), 2(P484), 2(P485), 2(P486), 2(P487), 2(P488), 2(P489), 2(P490), 2(P491), 2(P492), 2(P493), 2(P494), 2(P495), 2(P496), 2(P497), 2(P498), 2(P499), 2(P500), 2(P501), 2(P502), 2(P503), 2(P504), 2(P505), 2(P506), 2(P507), 2(P508), 2(P509), 2(P510), 2(P511), 2(P512), 2(P513), 2(P514), 2(P515), 2(P516), 2(P517), 2(P518), 2(P519), 2(P520), 2(P521), 2(P522), 2(P523), 2(P524), 2(P525), 2(P526), 2(P527), 2(P528), 2(P529), 2(P530), 2(P531), 2(P532), 2(P533), 2(P534), 2(P535), 2(P536), 2(P537), 2(P538), 2(P539), 2(P540), 2(P541), 2(P542), 2(P543), 2(P544), 2(P545), 2(P546), 2(P547), 2(P548), 2(P549), 2(P550), 2(P551), 2(P552), 2(P553), 2(P554), 2(P555), 2(P556), 2(P557), 2(P558), 2(P559), 2(P560), 2(P561), 2(P562), 2(P563), 2(P564), 2(P565), 2(P566), 2(P567), 2(P568), 2(P569), 2(P570), 2(P571), 2(P572), 2(P573), 2(P574), 2(P575), 2(P576), 2(P577), 2(P578), 2(P579), 2(P580), 2(P581), 2(P582), 2(P583), 2(P584), 2(P585), 2(P586), 2(P587), 2(P588), 2(P589), 2(P590), 2(P591), 2(P592), 2(P593), 2(P594), 2(P595), 2(P596), 2(P597), 2(P598), 2(P599), 2(P600), 2(P601), 2(P602), 2(P603), 2(P604), 2(P605), 2(P606), 2(P607), 2(P608), 2(P609), 2(P610), 2(P611), 2(P612), 2(P613), 2(P614), 2(P615), 2(P616), 2(P617), 2(P618), 2(P619), 2(P620), 2(P621), 2(P622), 2(P623), 2(P624), 2(P625), 2(P626), 2(P627), 2(P628), 2(P629), 2(P630), 2(P631), 2(P632), 2(P633), 2(P634), 2(P635), 2(P636), 2(P637), 2(P638), 2(P639), 2(P640), 2(P641), 2(P642), 2(P643), 2(P644), 2(P645), 2(P646), 2(P647), 2(P648), 2(P649), 2(P650), 2(P651), 2(P652), 2(P653), 2(P654), 2(P655), 2(P656), 2(P657), 2(P658), 2(P659), 2(P660), 2(P661), 2(P662), 2(P663), 2(P664), 2(P665), 2(P666), 2(P667), 2(P668), 2(P669), 2(P670), 2(P671), 2(P672), 2(P673), 2(P674), 2(P675), 2(P676), 2(P677), 2(P678), 2(P679), 2(P680), 2(P681), 2(P682), 2(P683), 2(P684), 2(P685), 2(P686), 2(P687), 2(P688), 2(P689), 2(P690), 2(P691), 2(P692), 2(P693), 2(P694), 2(P695), 2(P696), 2(P697), 2(P698), 2(P699), 2(P700), 2(P701), 2(P702), 2(P703), 2(P704), 2(P705), 2(P706), 2(P707), 2(P708), 2(P709), 2(P710), 2(P711), 2(P712), 2(P713), 2(P714), 2(P715), 2(P716), 2(P717), 2(P718), 2(P719), 2(P720), 2(P721), 2(P722), 2(P723), 2(P724), 2(P725), 2(P726), 2(P727), 2(P728), 2(P729), 2(P730), 2(P731), 2(P732), 2(P733), 2(P734), 2(P735), 2(P736), 2(P737), 2(P738), 2(P739), 2(P740), 2(P741), 2(P742), 2(P743), 2(P744), 2(P745), 2(P746), 2(P747), 2(P748), 2(P749), 2(P750), 2(P751), 2(P752), 2(P753), 2(P754), 2(P755), 2(P756), 2(P757), 2(P758), 2(P759), 2(P760), 2(P761), 2(P762), 2(P763), 2(P764), 2(P765), 2(P766), 2(P767), 2(P768), 2(P769), 2(P770), 2(P771), 2(P772), 2(P773), 2(P774), 2(P775), 2(P776), 2(P777), 2(P778), 2(P779), 2(P780), 2(P781), 2(P782), 2(P783), 2(P784), 2(P785), 2(P786), 2(P787), 2(P788), 2(P789), 2(P790), 2(P791), 2(P792), 2(P793), 2(P794), 2(P795), 2(P796), 2(P797), 2(P798), 2(P799), 2(P800), 2(P801), 2(P802), 2(P803), 2(P804), 2(P805), 2(P806), 2(P807), 2(P808), 2(P809), 2(P810), 2(P811), 2(P812), 2(P813), 2(P814), 2(P815), 2(P816), 2(P817), 2(P818), 2(P819), 2(P820), 2(P821), 2(P822), 2(P823), 2(P824), 2(P825), 2(P826), 2(P827), 2(P828), 2(P829), 2(P830), 2(P831), 2(P832), 2(P833), 2(P834), 2(P835), 2(P836), 2(P837), 2(P838), 2(P839), 2(P840), 2(P841), 2(P842), 2(P843), 2(P844), 2(P845), 2(P846), 2(P847), 2(P848), 2(P849), 2(P850), 2(P851), 2(P852), 2(P853), 2(P854), 2(P855), 2(P856), 2(P857), 2(P858), 2(P859), 2(P860), 2(P861), 2(P862), 2(P863), 2(P864), 2(P865), 2(P866), 2(P867), 2(P868), 2(P869), 2(P870), 2(P871), 2(P872), 2(P873), 2(P874), 2(P875), 2(P876), 2(P877), 2(P878), 2(P879), 2(P880), 2(P881), 2(P882), 2(P883), 2(P884), 2(P885), 2(P886), 2(P887), 2(P888), 2(P889), 2(P890), 2(P891), 2(P892), 2(P893), 2(P894), 2(P895), 2(P896), 2(P897), 2(P898), 2(P899), 2(P900), 2(P901), 2(P902), 2(P903), 2(P904), 2(P905), 2(P906), 2(P907), 2(P908), 2(P909), 2(P910), 2(P911), 2(P912), 2(P913), 2(P914), 2(P915), 2(P916), 2(P917), 2(P918), 2(P919), 2(P920), 2(P921), 2(P922), 2(P923), 2(P924), 2(P925), 2(P926), 2(P927), 2(P928), 2(P929), 2(P930), 2(P931), 2(P932), 2(P933), 2(P934), 2(P935), 2(P936), 2(P937), 2(P938), 2(P939), 2(P940), 2(P941), 2(P942), 2(P943), 2(P944), 2(P945), 2(P946), 2(P947), 2(P948), 2(P949), 2(P950), 2(P951), 2(P952), 2(P953), 2(P954), 2(P955), 2(P956), 2(P957), 2(P958), 2(P959), 2(P960), 2(P961), 2(P962), 2(P963), 2(P964), 2(P965), 2(P966), 2(P967), 2(P968), 2(P969), 2(P970), 2(P971), 2(P972), 2(P973), 2(P974), 2(P975), 2(P976), 2(P977), 2(P978), 2(P979), 2(P980), 2(P981), 2(P982), 2(P983), 2(P984), 2(P985), 2(P986), 2(P987), 2(P988), 2(P989), 2(P990), 2(P991), 2(P992), 2(P993), 2(P994), 2(P995), 2(P996), 2(P997), 2(P998), 2(P999), 2(P1000).

NAME ADDRESS & SIGNATURE AOF PDA HOLDER

Shri. RAMESH A. MEHTA

Shri. DEEPAK R. MEHTA

304, 13TH FLOOR, SHRIHAR BUILDING, RADDI ROAD,  
MUMBAI 400024

SECTOR - 3 WARD NO - E

SHEET NO SCALE SCALE DESIGNER CHECKED BY DRAWN BY  
10 OF 11 AS STATED AS STATED

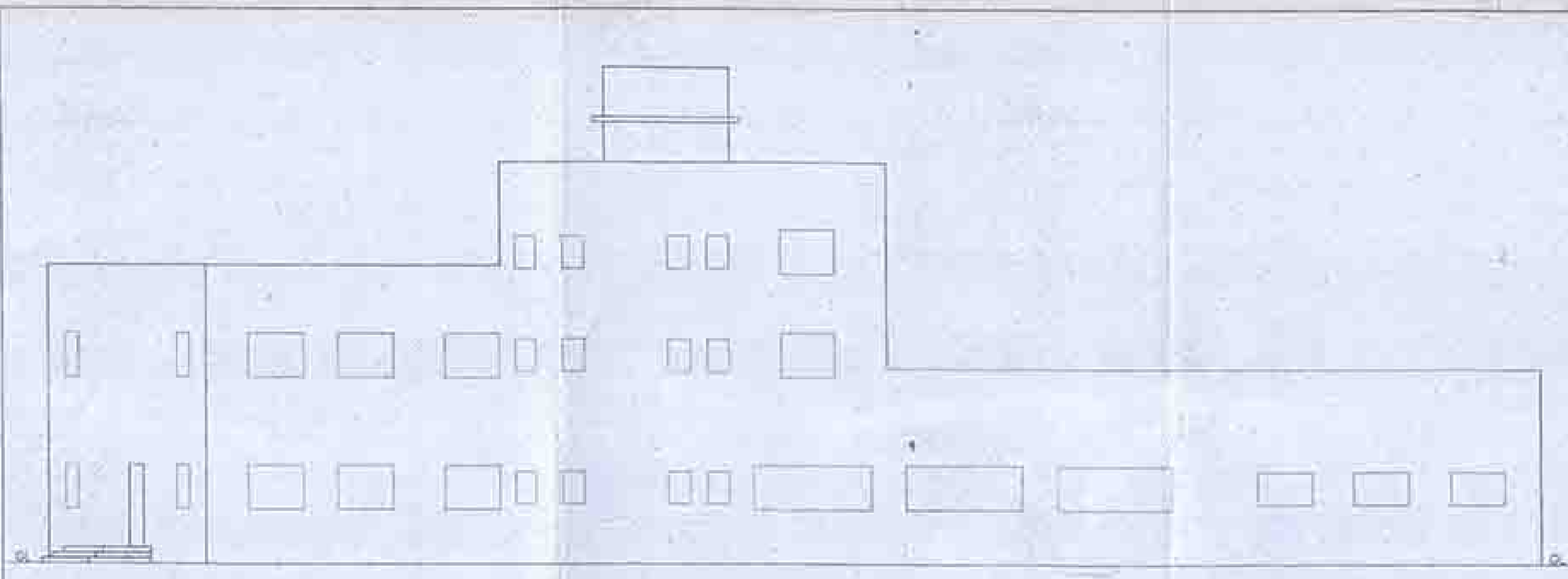
SIGNATURE OF ARCHITECT NAME AND ADDRESS OF ARCHITECT

RACHANA SHILP  
 ARCHITECTS P.C. MODAK  
 SHEET ROOM - FIRST FLOOR  
 ABOVE HARE HARE  
 PHADKE CROSS ROAD, DOMINUM [E]

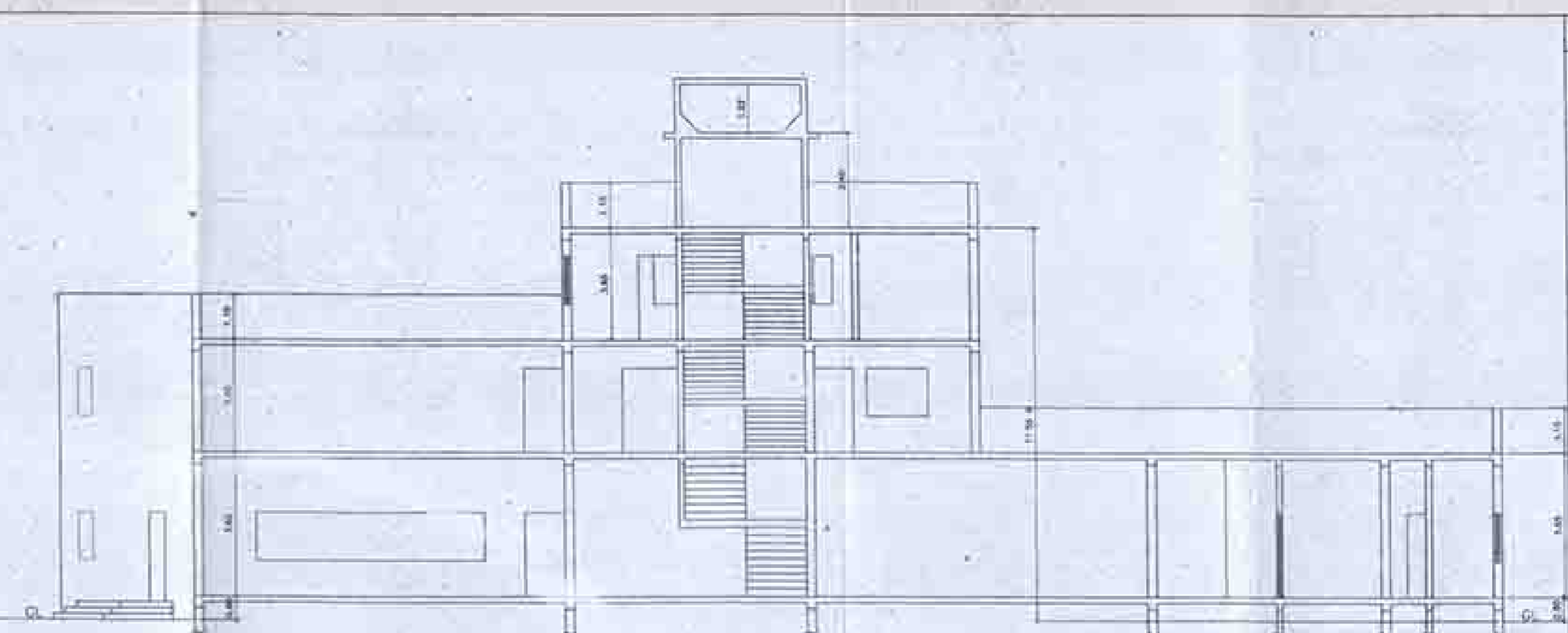
आचार्य शिल्प इंजीनियरिंग  
 प्लानिंग, ड्रॉइंग, एंड इंटीरियर डिजाइनिंग सर्विस प्रोवाइडर्स  
 मास्टर प्लान, इंडिया / एन.ए.सी. रोड, 2092-28/22/80  
 पिनकोड: 410102  
 विदर्भ जिल्हा, महाराष्ट्र



आचार्य शिल्प इंजीनियरिंग  
 प्लानिंग, ड्रॉइंग, एंड इंटीरियर डिजाइनिंग सर्विस प्रोवाइडर्स

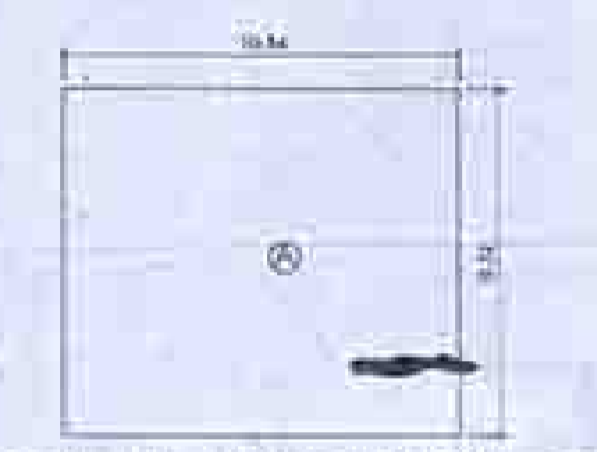


ELEVATION (SCALE 1:100)



SECTION ON A A (SCALE 1:100)

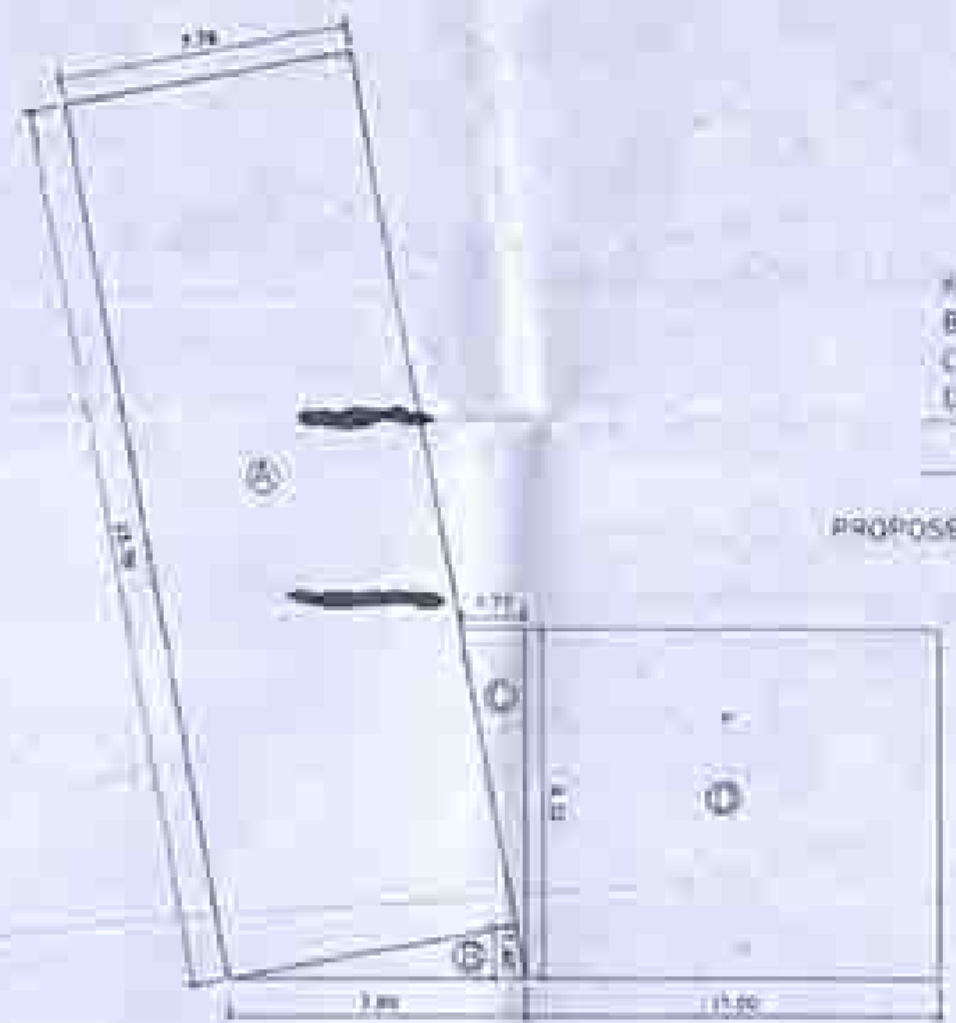
BUILT UP AREA LINE DIAGRAM & AREA CALCULATION FOR SECOND FLOOR (SCALE 1:100)



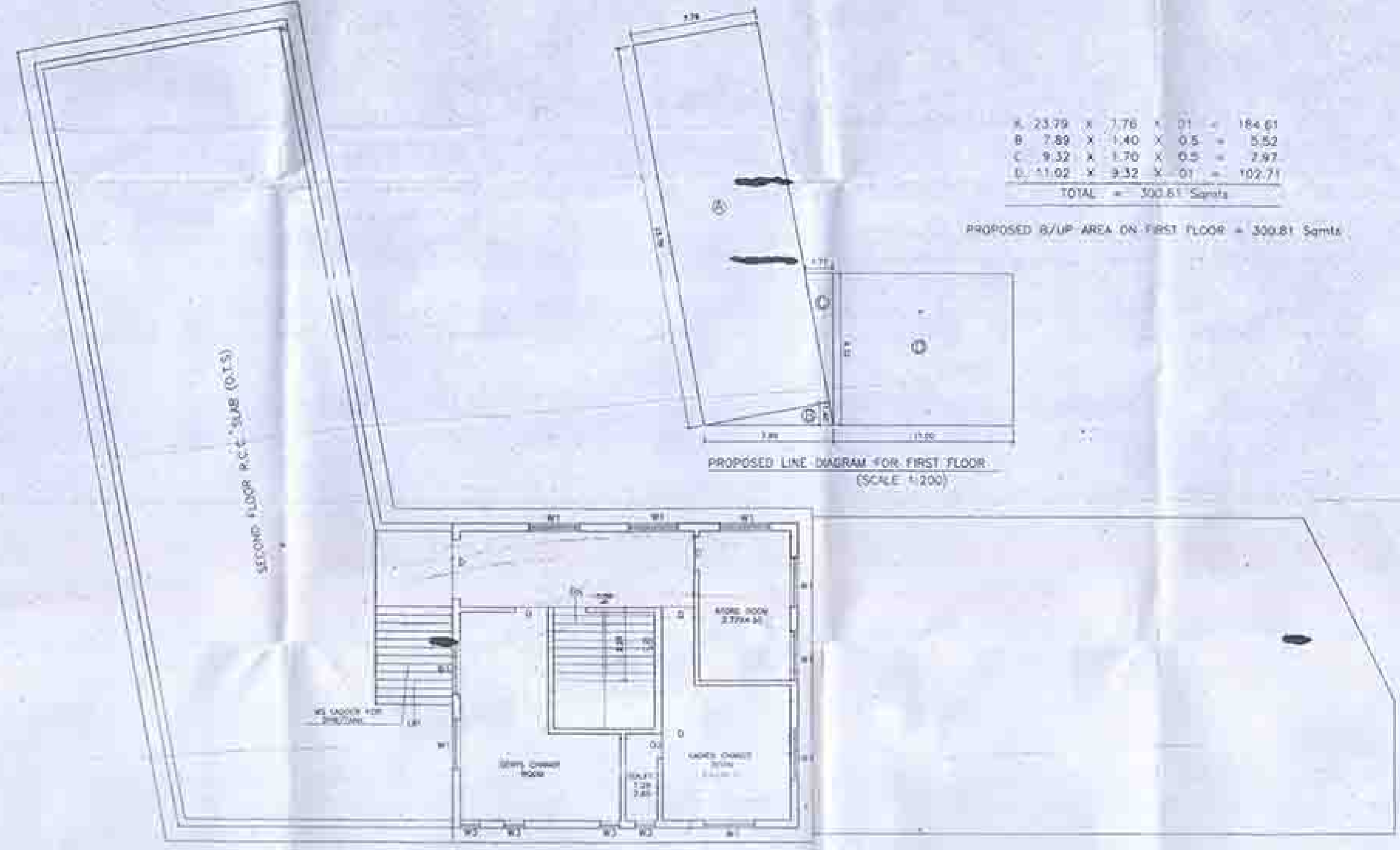
PROPOSED LINE DIAGRAM FOR SECOND FLOOR (SCALE 1:200)  
 A 10.54 X 9.32 = 98.23  
 TOTAL = 98.23 Sqmts  
 PROPOSED B/UP AREA ON SECOND FLOOR = 98.23 Sqmts

FLOOR	BUILT UP AREA	NO OF TENANTS
GROUND	481.29	N.I.L.
FIRST	300.81	N.I.L.
SECOND	98.23	N.I.L.
TOTAL	880.33	N.I.L.

BUILT UP AREA LINE DIAGRAM & AREA CALCULATION FOR FIRST FLOOR (SCALE 1:100)



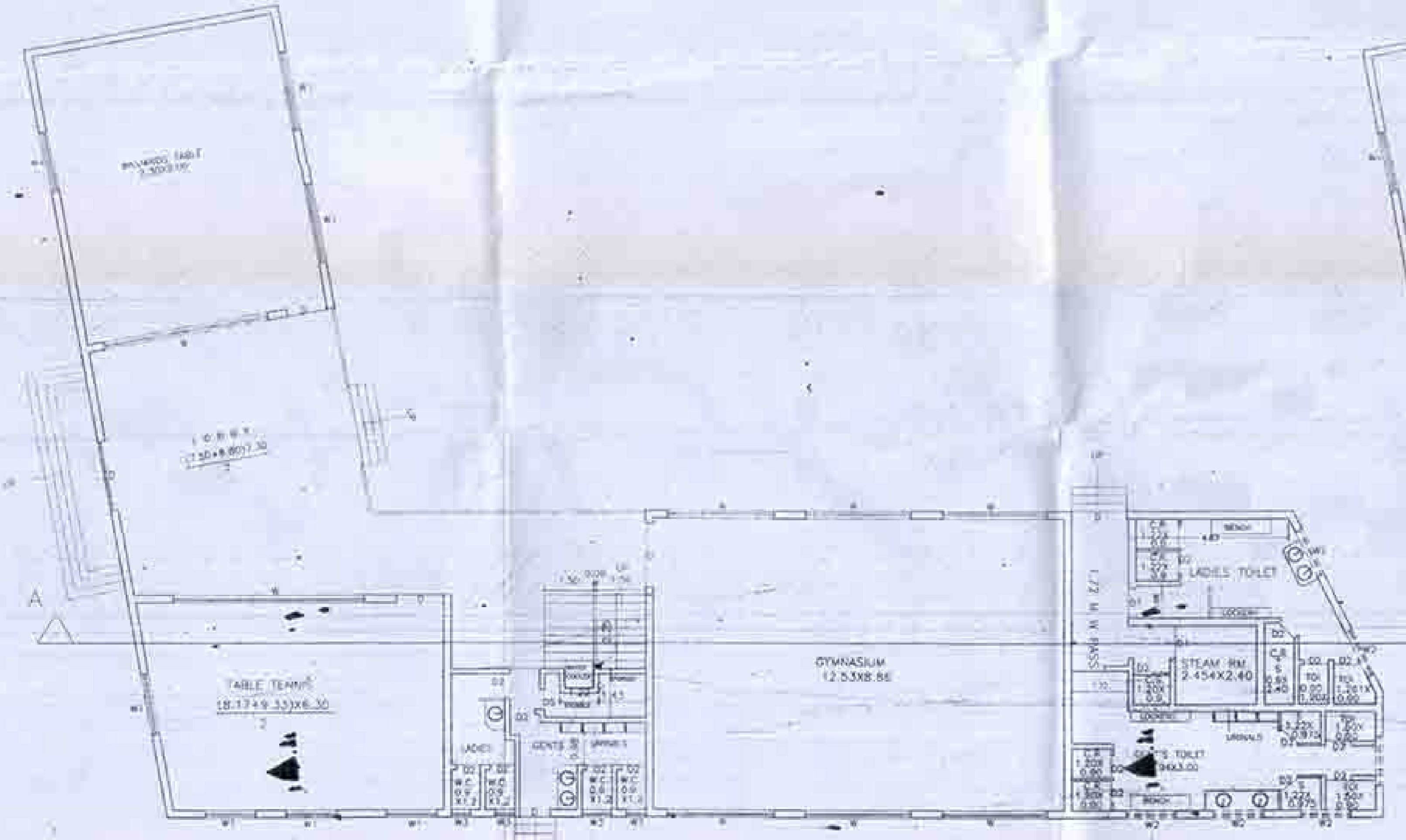
A. 23.79 X 7.76 X 01 = 184.61  
 B. 7.89 X 1.40 X 0.5 = 5.52  
 C. 9.32 X 1.70 X 0.5 = 7.97  
 D. 11.02 X 9.32 X 01 = 102.71  
 TOTAL = 300.81 Sqmts  
 PROPOSED B/UP AREA ON FIRST FLOOR = 300.81 Sqmts



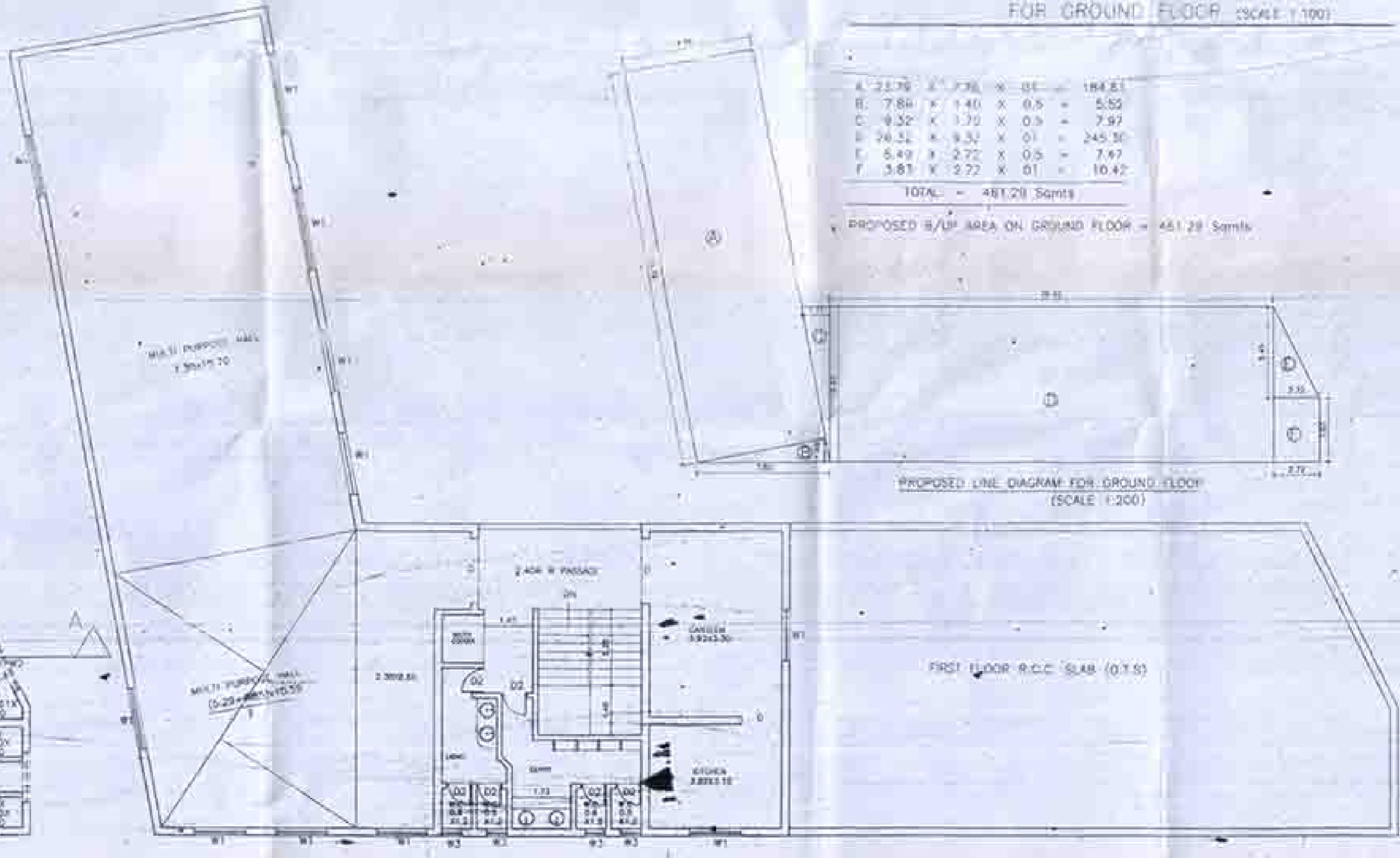
SECOND FLOOR PLAN (SCALE 1:100)

BUILT UP AREA LINE DIAGRAM & AREA CALCULATION FOR GROUND FLOOR (SCALE 1:100)

A. 23.79 X 7.76 X 01 = 184.61  
 B. 7.89 X 1.40 X 0.5 = 5.52  
 C. 9.32 X 1.70 X 0.5 = 7.97  
 D. 24.52 X 9.32 X 01 = 228.36  
 E. 5.49 X 2.72 X 0.5 = 7.47  
 F. 3.81 X 2.72 X 01 = 10.42  
 TOTAL = 481.29 Sqmts  
 PROPOSED B/UP AREA ON GROUND FLOOR = 481.29 Sqmts



GROUND FLOOR PLAN (SCALE 1:100)



FIRST FLOOR PLAN (SCALE 1:100)

TYPE	SIZE	AREA	DESCRIPTION
D	1.50 X 2.15	320	T.M. FRAME FULLY PANNELED SINGLE LEAF
DI	1.40 X 2.15	300	T.M. FRAME FULLY PANNELED SINGLE LEAF
DD	0.75 X 2.00	150	T.M. FRAME 0.85 M.H. GLASS AT TOP OF LEAF
W	0.65 X 1.00	648	T.M. FRAME FULLY GLAZED THICK SHUTTERS
WI	2.44 X 1.50	366	T.M. FRAME FULLY GLAZED TWO SHUTTERS
WII	1.75 X 1.50	263	T.M. FRAME FULLY GLAZED TWO SHUTTERS
WD	0.80 X 0.80	64	T.M. FRAME GLASS LOUVERS AT 45

CONTENTS OF SHEET	STAMP OF DATE OF RECEIPT OF PLAN
FLOOR PLAN SECTIONAL ELEVATION B/UP AREA CALCULATION SUMMARY	

NOTES  
 PREPARED BY THE ARCHITECT  
 ALL EXISTING AND PROPOSED WORKS ARE TO BE DONE AS PER THE  
 ARCHITECT'S DRAWINGS AND SPECIFICATIONS  
 THE CONTRACTOR SHALL BE RESPONSIBLE FOR THE WORK

DESCRIPTION OF PROPOSAL AND PROPERTY  
 PROPOSED RESIDENTIAL BUILDING ON PLOT BEARING S.NO. 76 (OLD) & NEW S.NO. 22, H.NO. 1 (P) 2&3& S.NO. 74 (OLD) NEW S.NO. 24, H.NO. 2 (P) COURIPADA, TALUKA-KALYAN, DIST-THANE

- FOR:
- Shri. KAMLAJ S. BHATKAR & KAMLAJ R. BHATKAR
  - Shri. SUMAN RAMU. MANERKAR
  - Shri. CHANDRABAL K. MANERKAR
  - Shri. PARVATIJI M. MANERKAR

Mr. MOHD HANIF MOHD HASAN MOULVI & 43 OTHERS  
 Mr. ABDUL RAHMAN QURAN ALI MOULVI & 43 OTHERS

SECTOR NO. 3 WARD NO. 1  
 NAME ADDRESS & SIGNATURE OF P.O.A HOLDER

Mr. RAMESH A. MEHTA  
 SWAMI BUILDING  
 OFF TOWN HALL  
 TEMPNAR, THANE (W) DIST.

SHEET NO. SCALE DESIGN BY DRAWN BY CHECKED BY  
 11 OF 11 AS STATED

SIGNATURE OF ARCHITECT NAME AND ADDRESS OF ARCHITECT  
 C.A. NO. 84/8623

ARCHITECT RACHANA SHILP.  
 R.C. MODAK  
 (P.O. ARCHT)  
 THREE ANKUR, FIRST FLOOR,  
 ABOVE I.I.T. ROAD,  
 PLEASANT CROSS ROAD, DONDEGAON