

CONTENTS OF SHEET

TYPICAL FLOOR PLAN  
REFUGEE FLOOR PLAN

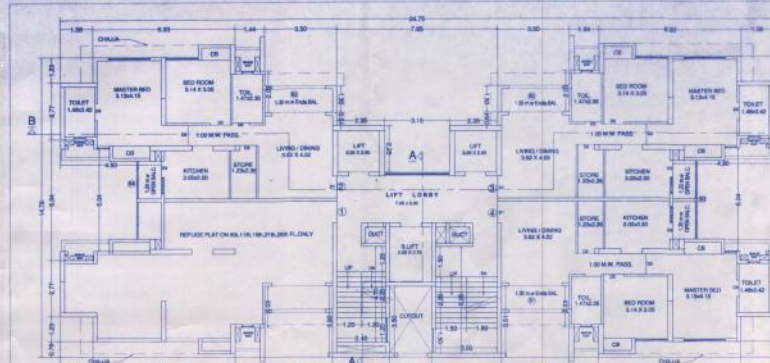
BLDG-1-WING '1' (PLOT-A)  
(BT+PO,GR+27th FL.)

STAMP OF APPROVAL OF PLANS

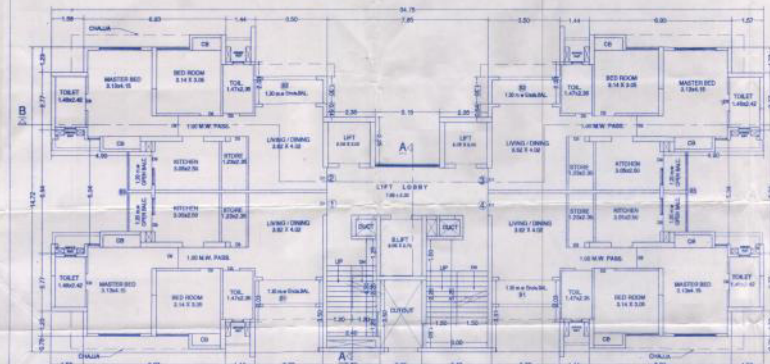
Occupation is hereby granted  
Subject to conditions mentioned  
in this Office Order  
No. TMC/TP/01/13 no.55/10/14  
Dated ...23/04/17...

Thane Municipal Corporation  
The City of Thane  
Executive Engineer  
(TDC)

Enclosure  
To be submitted to the City Engineer  
for his approval and to be submitted  
to the City Engineer for his  
approval and to be submitted  
to the City Engineer for his  
approval and to be submitted



REFUGEE FLOOR PLAN ( 8th,11th,16th,21th,26th FL.)  
SCALE 1:100



TYPICAL FLOOR PLAN ( 4th,5th,7th to 10th,12th to 15th,17th to 20th,22th to 25th & 27th fl.)  
SCALE 1:100

**TYPICAL FLOOR CARPET AREA**  
(Rev. No. 1 & 2)  
3rd FL, 5th FL to 10th, 12th to 15th to 17th to 20th,  
22th to 25th & 27th fl.

**FLAT NO. 1, 2, 3, 4**

LIVING RM	3.5 x 3.5 = 12.25 sq.mts
3.5 x 3.5 = 12.25 sq.mts	
0.2 x 0.9 = 0.18 sq.mts	
Bed Room	3.2 x 3.0 = 9.60 sq.mts
1 x 0.1 = 0.10 sq.mts	
M. Bed room	3.13 x 3.13 = 9.81 sq.mts
1.5 x 1 = 1.50 sq.mts	
Store	1.23 x 2.35 = 2.89 sq.mts
0.8 x 0.2 = 0.16 sq.mts	
KIL	5.15 x 2.32 = 7.40 sq.mts
1.05 x 0.25 = 0.26 sq.mts	
0.15 x 0.8 = 0.12 sq.mts	
Tot-1	1.48 x 3.35 = 3.48 sq.mts
0.8 x 0.1 = 0.08 sq.mts	
Tot-2	1.48 x 2.43 = 3.60 sq.mts
0.1 x 0.8 = 0.08 sq.mts	
Pass.	3.43 x 1 = 3.43 sq.mts
BAL.	1.1 x 1.85 = 2.04 sq.mts
<b>Total - (A)</b>	<b>= 66.53 sq.mts</b>

BELOW AREAS ARE NOT INCH ABOVE

C.B-1	1.82 x 0.8 = 1.46 sq.mts
C.B-2	1.4 x 0.6 = 0.84 sq.mts
<b>Total - (B)</b>	<b>= 1.94 sq.mts</b>
<b>TOTAL CARPET AREA (A+B)</b>	<b>= 68.47 sq.mts</b>

**CARPET AREA**  
1st & 2nd fl. FLAT NO. 2, 3, 6, 7  
3rd fl. (Flat no. 2, 5)

LIVING RM	2.15 x 3.1 = 6.67 sq.mts
2.52 x 2.67 = 6.73 sq.mts	
2.27 x 2.35 = 5.33 sq.mts	
0.92 x 0.25 = 0.23 sq.mts	
0.15 x 0.8 = 0.12 sq.mts	
2.42 x 1 = 2.42 sq.mts	
<b>Tot.</b>	<b>1.04 x 2.42 = 2.52 sq.mts</b>
C.B-1	0.13 x 0.75 = 0.11 sq.mts
WC	0.8 x 1.17 = 0.94 sq.mts
0.15 x 0.45 = 0.07 sq.mts	
KIT	3.13 x 1.37 = 3.99 sq.mts
3.44 x 1.0 = 3.44 sq.mts	
2.47 x 1.95 = 4.82 sq.mts	
<b>TOTAL CARPET AREA</b>	<b>= 55.89 sq.mts</b>

**CARPET AREA**  
1st & 2nd fl. FLAT NO. 1, 4, 5, 8  
3rd fl. FLAT NO. 3, 4

LIVING RM	3.3 x 3 = 9.90 sq.mts
1.05 x 0.15 = 0.16 sq.mts	
<b>Tot.</b>	<b>1.1 x 2.95 = 3.25 sq.mts</b>
0.1 x 0.75 = 0.08 sq.mts	
WC	0.8 x 1.1 = 0.88 sq.mts
0.75 x 0.1 = 0.08 sq.mts	
KIT	3.34 x 0.57 = 1.90 sq.mts
2.52 x 2.64 = 6.65 sq.mts	
1 x 1.35 = 1.35 sq.mts	
PASS.	2.53 x 1 = 2.53 sq.mts
<b>TOTAL CARPET AREA</b>	<b>= 25.52 sq.mts</b>

**Podium/Gr. Carpet Area**  
(Rev. No. 1 & 2)

LN/RM	0.2 x 1.72 = 0.34 sq.mts	
4.75 x 5.27 = 25.00 sq.mts		
1.97 x 0.3 = 0.59 sq.mts		
1.17 x 3.99 = 4.67 sq.mts		
0.1 x 3 = 0.30 sq.mts		
<b>Tot.</b>	<b>1.48 x 1.87 = 2.76 sq.mts</b>	
1.25 x 0.73 = 0.91 sq.mts		
0.75 x 0.1 = 0.08 sq.mts		
PASS.	1.48 x 2.87 = 4.24 sq.mts	
2.3 x 1 = 2.30 sq.mts		
<b>MASTER BED</b>	<b>3.34 x 4.35 = 14.53 sq.mts</b>	
0.23 x 1 = 0.23 sq.mts		
STORE	3.55 x 3.44 = 12.21 sq.mts	
1.09 x 0.55 = 0.60 sq.mts		
0.1 x 0.8 = 0.08 sq.mts		
MULTIPLY	3.13 x 1.95 = 6.10 sq.mts	
2.03 x 0.9 = 1.83 sq.mts		
0.22 x 1 = 0.22 sq.mts		
WARDROBE	3.26 x 1.3 = 4.24 sq.mts	
0.9 x 0.1 = 0.09 sq.mts		
0.8 x 0.1 = 0.08 sq.mts		
TOT.	2.1 x 0.8 = 1.68 sq.mts	
1.48 x 2.42 = 3.58 sq.mts		
<b>KITCHEN</b>	<b>3.35 x 3.3 = 11.06 sq.mts</b>	
1.02 x 0.25 = 0.26 sq.mts		
0.15 x 0.8 = 0.12 sq.mts		
<b>Tot.</b>	<b>1.48 x 2.75 = 4.07 sq.mts</b>	
0.8 x 0.1 = 0.08 sq.mts		
0.8 x 0.1 = 0.08 sq.mts		
<b>MASTER BED</b>	<b>3.13 x 4.35 = 13.62 sq.mts</b>	
1.1 x 0.1 = 0.11 sq.mts		
<b>Tot.</b>	<b>1.48 x 2.42 = 3.58 sq.mts</b>	
0.1 x 0.8 = 0.08 sq.mts		
<b>KITCHEN</b>	<b>3.35 x 3.3 = 11.06 sq.mts</b>	
1.02 x 0.25 = 0.26 sq.mts		
0.15 x 0.8 = 0.12 sq.mts		
<b>Tot.</b>	<b>1.48 x 2.75 = 4.07 sq.mts</b>	
0.8 x 0.1 = 0.08 sq.mts		
0.8 x 0.1 = 0.08 sq.mts		
<b>RED ROOM</b>	<b>3.34 x 3.05 = 10.18 sq.mts</b>	
1 x 0.1 = 0.10 sq.mts		
<b>MASTER BED</b>	<b>3.13 x 4.35 = 13.62 sq.mts</b>	
1.1 x 0.1 = 0.11 sq.mts		
<b>Tot.</b>	<b>1.48 x 2.42 = 3.58 sq.mts</b>	
0.1 x 0.8 = 0.08 sq.mts		
<b>BAL.</b>	<b>1.2 x 1.84 = 2.21 sq.mts</b>	
0.9 x 0.1 = 0.09 sq.mts		
<b>BELOW AREAS ARE NOT INCH ABOVE</b>	<b>Tot. (A)</b>	<b>= 25.48 sq.mts</b>
C.B-1	1.4 x 0.6 = 0.84 sq.mts	
1.4 x 0.6 = 0.84 sq.mts		
1.82 x 0.8 = 1.46 sq.mts		
1.82 x 0.8 = 1.46 sq.mts		
<b>Tot. (B)</b>	<b>= 3.88 sq.mts</b>	
<b>TOTAL CARPET AREA (A+B)</b>	<b>= 29.36 sq.mts</b>	

**CARPET AREA**  
1st & 2nd fl. FLAT NO. 1, 4, 5, 8  
3rd fl. FLAT NO. 3, 4

LIVING RM	3.3 x 3 = 9.90 sq.mts
1.05 x 0.15 = 0.16 sq.mts	
<b>Tot.</b>	<b>1.1 x 2.95 = 3.25 sq.mts</b>
0.1 x 0.75 = 0.08 sq.mts	
WC	0.8 x 1.1 = 0.88 sq.mts
0.75 x 0.1 = 0.08 sq.mts	
KIT	3.34 x 0.57 = 1.90 sq.mts
2.52 x 2.64 = 6.65 sq.mts	
1 x 1.35 = 1.35 sq.mts	
PASS.	2.53 x 1 = 2.53 sq.mts
<b>TOTAL CARPET AREA</b>	<b>= 25.52 sq.mts</b>

**CARPET AREA**  
1st & 2nd fl. FLAT NO. 1, 4, 5, 8  
3rd fl. FLAT NO. 3, 4

LIVING RM	3.3 x 3 = 9.90 sq.mts
1.05 x 0.15 = 0.16 sq.mts	
<b>Tot.</b>	<b>1.1 x 2.95 = 3.25 sq.mts</b>
0.1 x 0.75 = 0.08 sq.mts	
WC	0.8 x 1.1 = 0.88 sq.mts
0.75 x 0.1 = 0.08 sq.mts	
KIT	3.34 x 0.57 = 1.90 sq.mts
2.52 x 2.64 = 6.65 sq.mts	
1 x 1.35 = 1.35 sq.mts	
PASS.	2.53 x 1 = 2.53 sq.mts
<b>TOTAL CARPET AREA</b>	<b>= 25.52 sq.mts</b>

DESCRIPTION OF PROPOSAL AND PROPERTY

PROPOSED BUILDING ON PLOT BEARING S 40.02° E 40.23' S 100.00' TO T,  
BOUNDARY LINE OF 15.00' TO 15.00' TO 15.00' TO 15.00' TO 15.00' TO 15.00'  
S 40.02° E 40.23' S 100.00' TO T, BOUNDARY LINE OF 15.00' TO 15.00' TO 15.00'  
S 40.02° E 40.23' S 100.00' TO T, BOUNDARY LINE OF 15.00' TO 15.00' TO 15.00'  
S 40.02° E 40.23' S 100.00' TO T, BOUNDARY LINE OF 15.00' TO 15.00' TO 15.00'  
S 40.02° E 40.23' S 100.00' TO T, BOUNDARY LINE OF 15.00' TO 15.00' TO 15.00'  
S 40.02° E 40.23' S 100.00' TO T, BOUNDARY LINE OF 15.00' TO 15.00' TO 15.00'

NAME OF OWNER

M/S. PHADDEEP KAMBLE & ASSOCIATES  
CONSTRUCTION & DEVELOPMENT PVT. LTD.

ARCHITECT'S NAME AND ADDRESS

PHADDEEP KAMBLE & ASSOCIATES C/87/10471  
87/101, 1st FL., JAMNI BAUTERA COMPLEX,  
FANCI MATLIYA PATH, RAMNAGAR,  
DOMBIVALI (E) - 401 201, TEL. - 022 2982642