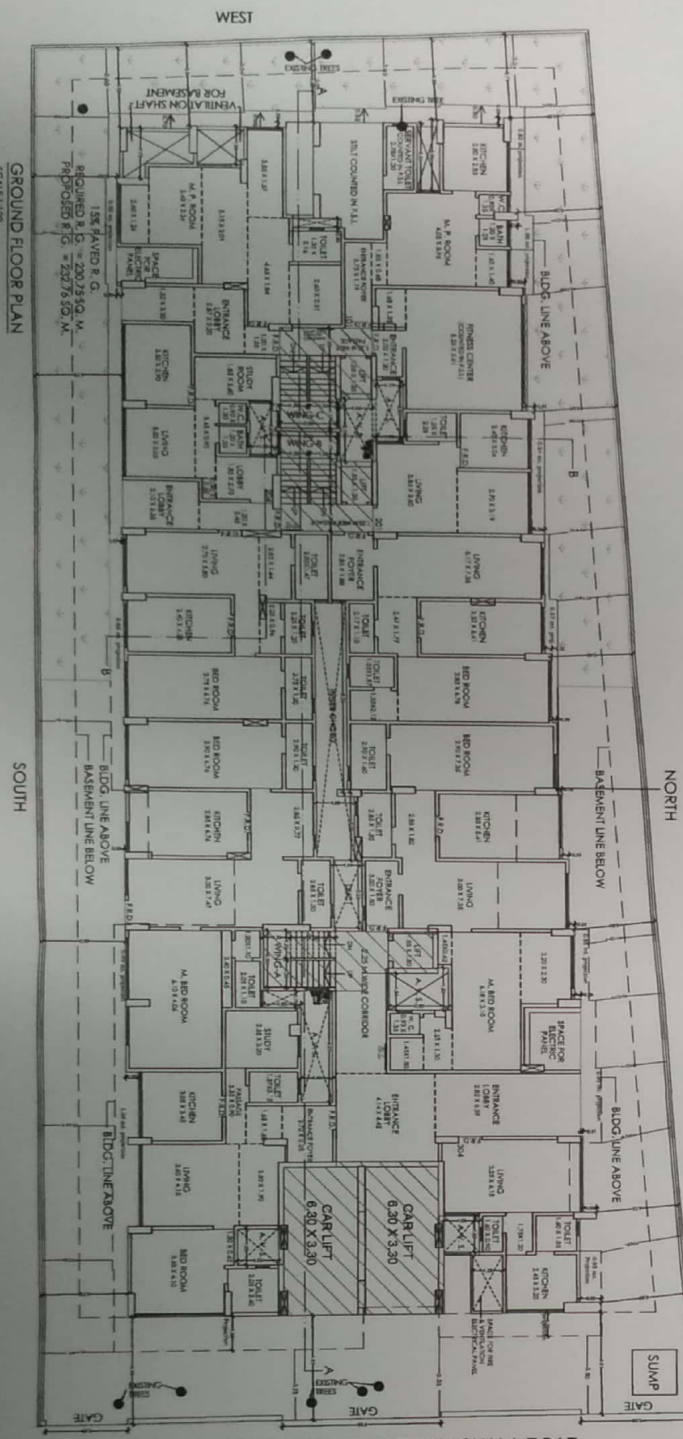
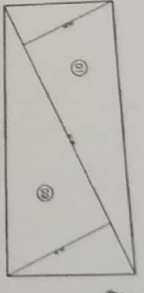


FIRST FLOOR PLAN

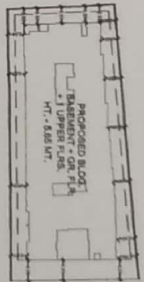


GROUND FLOOR PLAN

136 PAVED R.G.
PROPOSED R.G. = 200.75 SQ. M.
PROPOSED R.G. = 227.75 SQ. M.
SCALE 1:100



PLOT AREA CALCULATION
 PLOT AREA = 1000 SQ. M.
 (1) 47.8 x 20.1 = 960.18 SQ. M.
 (2) 47.8 x 5.47 = 261.46 SQ. M.
 TOTAL = 1221.64 SQ. M.



BLOCK PLAN



LOCATION PLAN

SUMMARY

FLOOR	TOTAL AREA (SQ. M.)	PLANNING
BASEMENT 1	74.14	74.14
GF	74.14	74.14
TOTAL	148.28	148.28

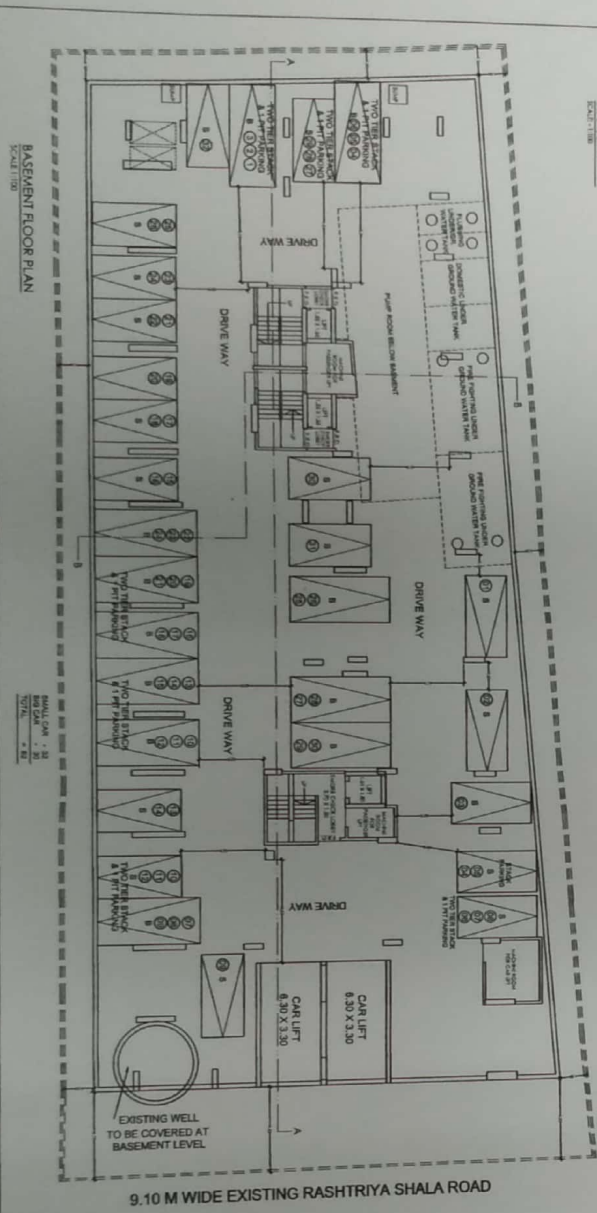
AS PER D.C.R. 1981

PARKING AREA STATEMENT

NO. OF CARS	NO. OF BIKES	NO. OF VEHICLES
1	2	3
2	4	6
3	6	9
4	8	12
5	10	15
6	12	18
7	14	21
8	16	24
9	18	27
10	20	30
11	22	33
12	24	36
13	26	39
14	28	42
15	30	45
16	32	48
17	34	51
18	36	54
19	38	57
20	40	60
21	42	63
22	44	66
23	46	69
24	48	72
25	50	75
26	52	78
27	54	81
28	56	84
29	58	87
30	60	90
31	62	93
32	64	96
33	66	99
34	68	102
35	70	105
36	72	108
37	74	111
38	76	114
39	78	117
40	80	120
41	82	123
42	84	126
43	86	129
44	88	132
45	90	135
46	92	138
47	94	141
48	96	144
49	98	147
50	100	150

PROFORMA

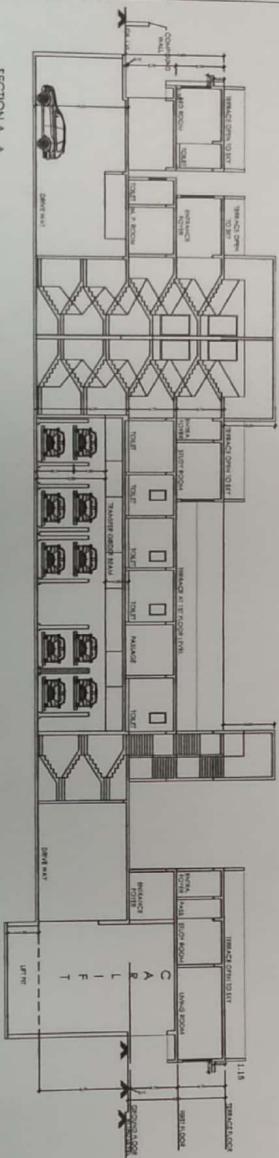
NO.	DESCRIPTION	UNIT	AMOUNT	REMARKS
1
2
3
4
5
6
7
8
9
10
11
12
13
14
15
16
17
18
19
20
21
22
23
24
25
26
27
28
29
30
31
32
33
34
35
36
37
38
39
40
41
42
43
44
45
46
47
48
49
50



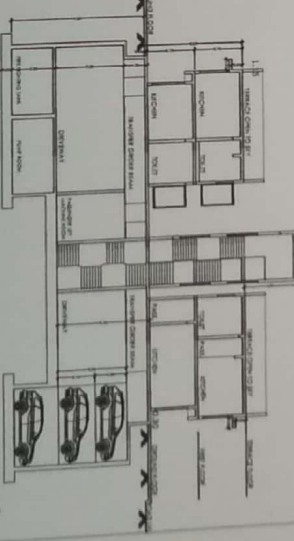
BASMENT FLOOR PLAN
SCALE 1:100

SCALE 1:100
DATE: / /

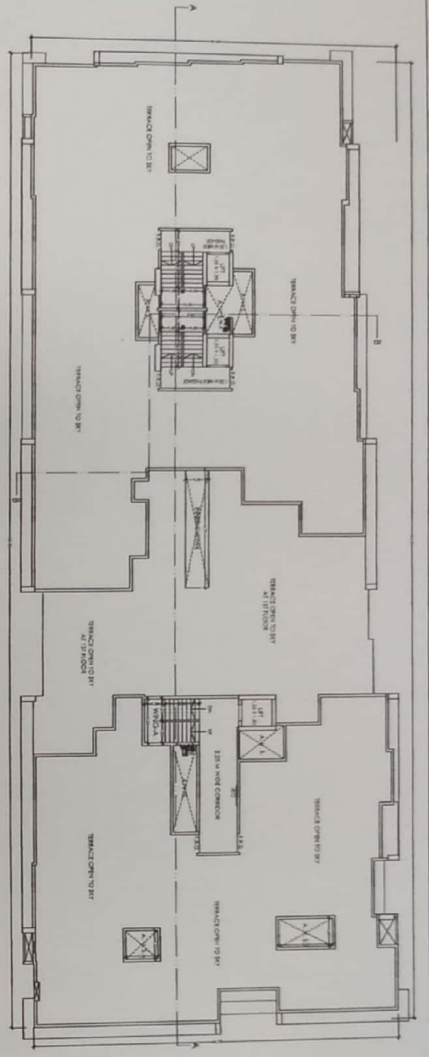
SECTION A - A
SCALE 1:100



SECTION B - B
SCALE 1:100



TERRACE FLOOR PLAN
SCALE 1:100



SAP HHOCHTURTU		PERFORMA - B	
NO. 1	NO. 2	NO. 1	NO. 2
NO. 3	NO. 4	NO. 3	NO. 4
NO. 5	NO. 6	NO. 5	NO. 6
NO. 7	NO. 8	NO. 7	NO. 8
NO. 9	NO. 10	NO. 9	NO. 10
NO. 11	NO. 12	NO. 11	NO. 12
NO. 13	NO. 14	NO. 13	NO. 14
NO. 15	NO. 16	NO. 15	NO. 16
NO. 17	NO. 18	NO. 17	NO. 18
NO. 19	NO. 20	NO. 19	NO. 20
NO. 21	NO. 22	NO. 21	NO. 22
NO. 23	NO. 24	NO. 23	NO. 24
NO. 25	NO. 26	NO. 25	NO. 26
NO. 27	NO. 28	NO. 27	NO. 28
NO. 29	NO. 30	NO. 29	NO. 30
NO. 31	NO. 32	NO. 31	NO. 32
NO. 33	NO. 34	NO. 33	NO. 34
NO. 35	NO. 36	NO. 35	NO. 36
NO. 37	NO. 38	NO. 37	NO. 38
NO. 39	NO. 40	NO. 39	NO. 40
NO. 41	NO. 42	NO. 41	NO. 42
NO. 43	NO. 44	NO. 43	NO. 44
NO. 45	NO. 46	NO. 45	NO. 46
NO. 47	NO. 48	NO. 47	NO. 48
NO. 49	NO. 50	NO. 49	NO. 50
NO. 51	NO. 52	NO. 51	NO. 52
NO. 53	NO. 54	NO. 53	NO. 54
NO. 55	NO. 56	NO. 55	NO. 56
NO. 57	NO. 58	NO. 57	NO. 58
NO. 59	NO. 60	NO. 59	NO. 60
NO. 61	NO. 62	NO. 61	NO. 62
NO. 63	NO. 64	NO. 63	NO. 64
NO. 65	NO. 66	NO. 65	NO. 66
NO. 67	NO. 68	NO. 67	NO. 68
NO. 69	NO. 70	NO. 69	NO. 70
NO. 71	NO. 72	NO. 71	NO. 72
NO. 73	NO. 74	NO. 73	NO. 74
NO. 75	NO. 76	NO. 75	NO. 76
NO. 77	NO. 78	NO. 77	NO. 78
NO. 79	NO. 80	NO. 79	NO. 80
NO. 81	NO. 82	NO. 81	NO. 82
NO. 83	NO. 84	NO. 83	NO. 84
NO. 85	NO. 86	NO. 85	NO. 86
NO. 87	NO. 88	NO. 87	NO. 88
NO. 89	NO. 90	NO. 89	NO. 90
NO. 91	NO. 92	NO. 91	NO. 92
NO. 93	NO. 94	NO. 93	NO. 94
NO. 95	NO. 96	NO. 95	NO. 96
NO. 97	NO. 98	NO. 97	NO. 98
NO. 99	NO. 100	NO. 99	NO. 100

