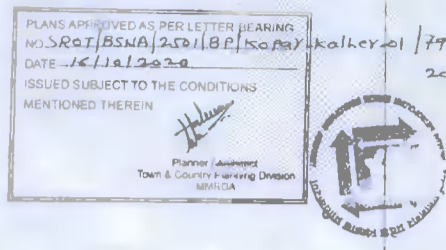


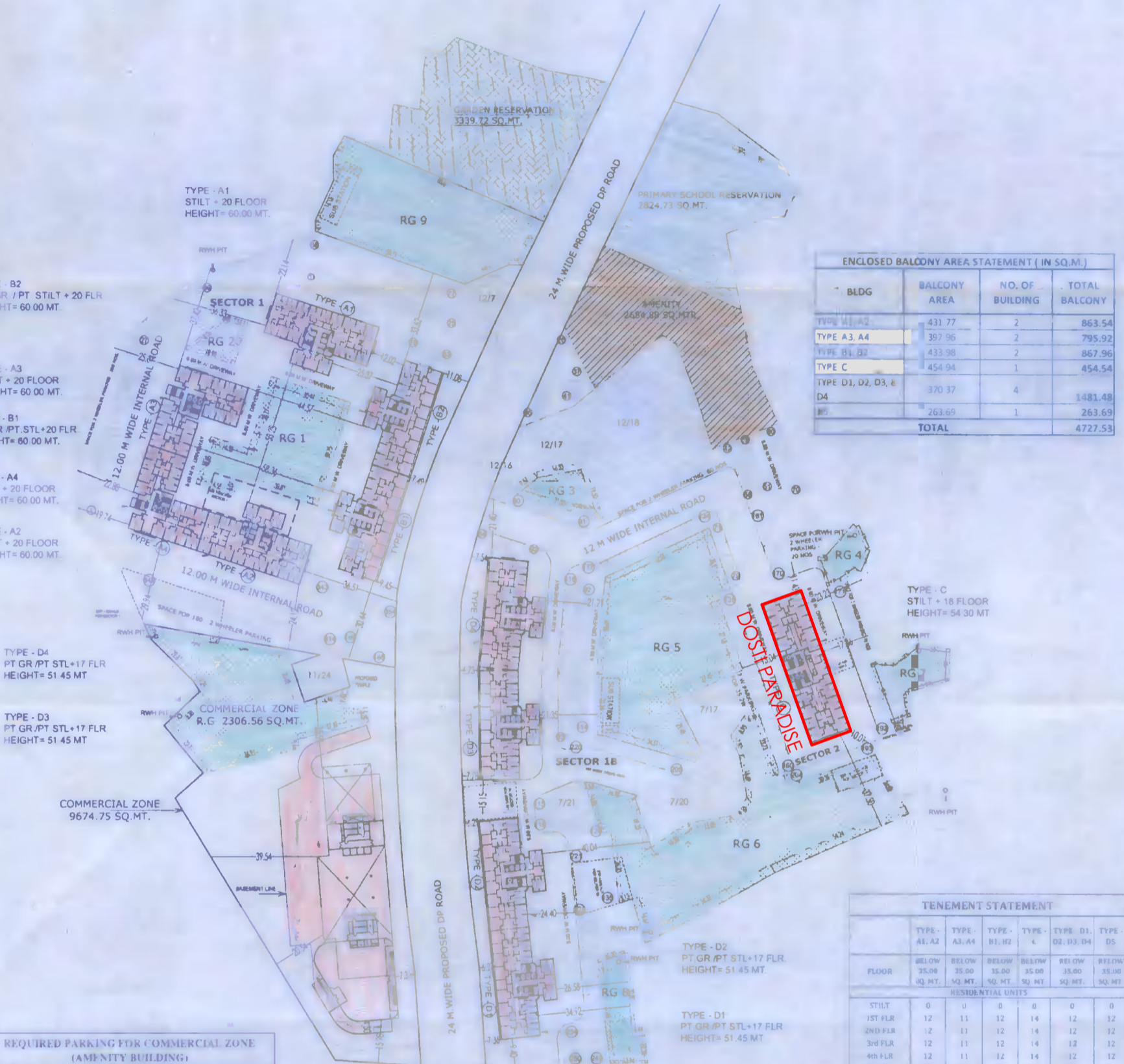
CONTENTS OF SHEET
LAYOUT BUILT UP AREA SUMMARY, PARKING AREA STATEMENTS,
R.G. AREA STATEMENTS & AMENITY AREA STATEMENT



BUILDING TYPE	NUMBER OF FLOORS	BUILDING HEIGHT IN MT.	NO. OF BUILDING TYPES	FREE OF FSI											TOTAL BUILT UP AREA	GRAND BUILT UP AREA	
				METER ROOM, ENTRANCE COVER, FITNESS CENTER & SOCIETY OFFICE	STAIRCASE, LIFT, PASSAGE AREA	REFUGE AREA	BALCONY AREA	TERRACE AREA	CUPBOARD AREA	FREE OF FSI AREA	30% PERMISSIBLE FREE OF FSI ON BUILT UP AREA	ENCLOSURE FREE OF FSI AREA	TOTAL EXCESS FREE OF FSI AREA	TOTAL BUILT UP AREA			GRAND BUILT UP AREA
TYPE - A1 & A2	STILT + 20	60.00	2	690.94	1,893.58	86.89	38.77	21.87	86.89	18.51	430.24	3030.76	7661.52	1095.21	110.91	11,811.71	15,414.11
TYPE - A3 & A4	STILT + 20	60.00	2	636.54	1,653.08	89.25	39.63	22.76	89.25	18.51	430.24	3030.76	7661.52	1095.21	110.91	11,811.71	15,414.11
TYPE - B1 & B2	STILT PART + SHOP PART + 20	60.00	2	7082.74	14165.48	102.78	2665.87	329.30	433.98	14.61	427.51	3073.95	7747.50	1324.82	3780.13	3498.26	8882.87
TYPE C	STILT + 18	54.30	1	7207.31	7207.31	132.25	2302.95	222.30	654.94	0	456.35	3071.79	7971.79	1851.13	1889.86	1889.86	1106.77
TYPE - D1, D2, D3 & D4	STILT PART + SHOP PART + 17	51.45	4	6068.59	24274.36	91.28	2278.01	175.80	370.37	14.61	427.51	3073.95	7747.50	1324.82	3780.13	3498.26	8882.87
TYPE - 05	STILT PART + SHOP PART + 12	37.20	1	4367.32	4367.32	91.28	1832.11	87.90	263.89	14.61	427.51	3073.95	7747.50	1324.82	3780.13	3498.26	8882.87
COMMERCIAL C1	GROUND	4.85	1	754.00	754.00	0.00	0.00	0.00	0.00	0.00	0.00	0.00	0.00	0.00	0.00	754.00	754.00
TOTAL			12	72938.41	72938.41	0.00	2713.29	0.00	0.00	0.00	0.00	0.00	0.00	0.00	0.00	0.00	0.00

BLDG TYPE	AREA IN SQ.M.
TYPE - A1	8642.05
TYPE - A2	8662.05
TYPE - A3	8083.52
TYPE - A4	8083.52
TYPE - B1	8831.87
TYPE - B2	8831.87
TYPE - C	9016.77
TYPE - D1	7539.58
TYPE - D2	7539.58
TYPE - D3	7539.58
TYPE - D4	7539.58
TYPE - D5	5404.30
COMMERCIAL - C1	754.00
TOTAL	96492.67
AMENITY BUILDING	6582.93
GRAND TOTAL	103075.60

TOTAL R.G. REQUIRED	R.G. PROVIDED
50642.77 X 28.0% =	12181.69
R.G. 1	1486.64
R.G. 2	219.97
R.G. 3	1983.06
R.G. 4	1000.00
R.G. 5	3007.23
R.G. 6	3800.80
R.G. 7	435.45
R.G. 8	435.45
R.G. 9	2622.12
R.G. 10	453.74
TOTAL R.G. PROVIDED	12932.84



BLDG	BALCONY AREA	NO. OF BUILDING	TOTAL BALCONY
TYPE A1 & A2	431.77	2	863.54
TYPE A3 & A4	397.96	2	795.92
TYPE B1 & B2	433.98	2	867.96
TYPE C	454.94	1	454.94
TYPE D1, D2, D3, & D4	370.37	4	1481.48
AMENITY	263.89	1	263.89
TOTAL	2653.51	12	4727.53

Sr No	Village Name	Owner Name	Survey No.	Area (sq.m)	Advised purchase area
1	Kopar	Adnika Developers Pvt Ltd	5	400	400
2	Kopar	Adnika Developers Pvt Ltd	5	430	430
3	Kopar	Adnika Developers Pvt Ltd	5	280	280
4	Kopar	Adnika Developers Pvt Ltd	5	11	250
5	Kopar	Adnika Developers Pvt Ltd	5	12	250
6	Kopar	Adnika Developers Pvt Ltd	5	13	250
7	Kopar	Adnika Developers Pvt Ltd	7	1	780
8	Kopar	Adnika Developers Pvt Ltd	7	2	400
9	Kopar	Adnika Developers Pvt Ltd	7	3	1000
10	Kopar	Adnika Developers Pvt Ltd	7	4	250
11	Kopar	Adnika Developers Pvt Ltd	7	5	250
12	Kopar	Adnika Developers Pvt Ltd	7	6	450
13	Kopar	Adnika Developers Pvt Ltd	7	7	450
14	Kopar	Adnika Developers Pvt Ltd	7	8	450
15	Kopar	Adnika Developers Pvt Ltd	7	9	1500
16	Kopar	Adnika Developers Pvt Ltd	7	10	380
17	Kopar	Adnika Developers Pvt Ltd	7	11	510
18	Kopar	Adnika Developers Pvt Ltd	7	12	150
19	Kopar	Adnika Developers Pvt Ltd	7	13	250
20	Kopar	Adnika Developers Pvt Ltd	7	14	250
21	Kopar	Adnika Developers Pvt Ltd	7	15	480
22	Kopar	Adnika Developers Pvt Ltd	7	16	480
23	Kopar	Adnika Developers Pvt Ltd	7	17	510
24	Kopar	Adnika Developers Pvt Ltd	7	18	480
25	Kopar	Adnika Developers Pvt Ltd	7	19	950
26	Kopar	Adnika Developers Pvt Ltd	7	20	600
27	Kopar	Adnika Developers Pvt Ltd	7	21	430
28	Kopar	Adnika Developers Pvt Ltd	7	22	510
29	Kopar	Adnika Developers Pvt Ltd	7	23	250
30	Kopar	Adnika Developers Pvt Ltd	7	24	130
31	Kopar	Adnika Developers Pvt Ltd	7	25	960
32	Kopar	Adnika Developers Pvt Ltd	7	26	250
33	Kopar	Adnika Developers Pvt Ltd	7	27	510
34	Kopar	Adnika Developers Pvt Ltd	7	28	100
35	Kopar	Adnika Developers Pvt Ltd	7	29	480
36	Kopar	Adnika Developers Pvt Ltd	7	30	580
37	Kopar	Adnika Developers Pvt Ltd	8	1A	1670
38	Kopar	Adnika Developers Pvt Ltd	8	2A	1370
39	Kopar	Adnika Developers Pvt Ltd	8	3	1400
40	Kopar	Adnika Developers Pvt Ltd	8	4	2300
41	Kopar	Adnika Developers Pvt Ltd	9	1	250
42	Kopar	Adnika Developers Pvt Ltd	9	2	1420
43	Kopar	Adnika Developers Pvt Ltd	9	3	300
44	Kopar	Adnika Developers Pvt Ltd	9	4	450
45	Kopar	Adnika Developers Pvt Ltd	9	5	410
46	Kopar	Adnika Developers Pvt Ltd	9	6	480
47	Kopar	Adnika Developers Pvt Ltd	9	7	540
48	Kopar	Adnika Developers Pvt Ltd	9	8	540
49	Kopar	Adnika Developers Pvt Ltd	9	9	580
50	Kopar	Adnika Developers Pvt Ltd	9	10	250
51	Kopar	Adnika Developers Pvt Ltd	9	11	730
52	Kopar	Adnika Developers Pvt Ltd	9	12	300
53	Kopar	Adnika Developers Pvt Ltd	10	1	1000
54	Kopar	Adnika Developers Pvt Ltd	10	2	660
55	Kopar	Adnika Developers Pvt Ltd	10	3	350
56	Kopar	Adnika Developers Pvt Ltd	10	4	150
57	Kopar	Adnika Developers Pvt Ltd	10	5	80
58	Kopar	Adnika Developers Pvt Ltd	10	6	1290
59	Kopar	Adnika Developers Pvt Ltd	10	7	400
60	Kopar	Adnika Developers Pvt Ltd	10	8	1060
61	Kopar	Adnika Developers Pvt Ltd	10	9	860
62	Kopar	Adnika Developers Pvt Ltd	10	10	300
63	Kopar	Adnika Developers Pvt Ltd	10	11	1110
64	Kopar	Adnika Developers Pvt Ltd	10	12	200
65	Kopar	Adnika Developers Pvt Ltd	10	13	860
66	Kopar	Adnika Developers Pvt Ltd	10	14	3310
67	Kopar	Adnika Developers Pvt Ltd	10	15	400
68	Kopar	Adnika Developers Pvt Ltd	10	16	400
69	Kopar	Adnika Developers Pvt Ltd	10	17	1480
70	Kopar	Adnika Developers Pvt Ltd	10	18	1480
71	Kopar	Adnika Developers Pvt Ltd	10	19	860
72	Kopar	Adnika Developers Pvt Ltd	10	20	1180
73	Kopar	Adnika Developers Pvt Ltd	10	21	280
74	Kopar	Adnika Developers Pvt Ltd	10	22	1590
75	Kopar	Adnika Developers Pvt Ltd	10	23	940
76	Kopar	Adnika Developers Pvt Ltd	10	24	310
77	Kopar	Adnika Developers Pvt Ltd	10	25	940
78	Kopar	Adnika Developers Pvt Ltd	10	26	510
79	Kopar	Adnika Developers Pvt Ltd	10	27	610
80	Kopar	Adnika Developers Pvt Ltd	10	28	510
81	Kopar	Adnika Developers Pvt Ltd	10	29	400
82	Kopar	Adnika Developers Pvt Ltd	10	30	380
83	Kopar	Adnika Developers Pvt Ltd	10	31	330
84	Kopar	Adnika Developers Pvt Ltd	10	32	740
85	Kopar	Adnika Developers Pvt Ltd	10	33	380
86	Kopar	Adnika Developers Pvt Ltd	10	34	950
87	Kopar	Adnika Developers Pvt Ltd	10	35	480
88	Kopar	Adnika Developers Pvt Ltd	10	36	250
89	Kopar	Adnika Developers Pvt Ltd	10	37	1300
90	Kopar	Adnika Developers Pvt Ltd	10	38	400
91	Kopar	Adnika Developers Pvt Ltd	10	39	780
92	Kopar	Adnika Developers Pvt Ltd	10	40	110
93	Kopar	Adnika Developers Pvt Ltd	10	41	1750
94	Kopar	Adnika Developers Pvt Ltd	10	42	200
95	Kopar	Adnika Developers Pvt Ltd	10	43	230
96	Kopar	Adnika Developers Pvt Ltd	10	44	190
97	Kopar	Adnika Developers Pvt Ltd	10	45	210
98	Kopar	Adnika Developers Pvt Ltd	10	46	300
99	Kopar	Adnika Developers Pvt Ltd	10	47	510
100	Kopar	Adnika Developers Pvt Ltd	10	48	510
101	Kopar	Adnika Developers Pvt Ltd	10	49	1010
Total				71,730	71,860

TYPE	TYPE - A1, A2	TYPE - A3, A4	TYPE - B1, B2	TYPE - C	TYPE - D1, D2, D3, D4	TYPE - 05
FLOOR	150.00	78.00	35.00	35.00	35.00	35.00
NO. OF UNITS	0	0	0	0	0	0
STILT	0	0	0	0	0	0
1ST FLR	12	11	12	14	12	12
2ND FLR	12	11	12	14	12	12
3RD FLR	12	11	12	14	12	12
4TH FLR	12	11	12	14	12	12
5TH FLR	12	11	12	14	12	12
6TH FLR	12	11	12	14	12	12
7TH FLR	12	11	12	14	12	12
8TH FLR	12	11	12	14	12	12
9TH FLR	12	11	12	14	12	12
10TH FLR	12	11	12	14	12	12
11TH FLR	12	11	12	14	12	12
12TH FLR	12	11	12	14	12	12
13TH FLR	12	11	12	14	12	12
14TH FLR	12	11	12	14	12	12
15TH FLR	12	11	12	14	12	12
16TH FLR	12	11	12	14	12	12
17TH FLR	12	11	12	14	12	12
18TH FLR	12	11	12	14	12	12
19TH FLR	12	11	12	14	12	12
20TH FLR	12	11	12	14	12	12
NO. OF UNITS	2	2	2	1	4	1
TOTAL	870	830	870	1245	800	132

USERS	REQUIREMENT	REQUIRED WHEELER	REQUIRED WHEELER
PROPOSED AREA	1 PARKING FOR 40 SQ.MT. UPTO 800 SQ.MT	20	20
5128.06	1 PARKING FOR EVERY 80 SQ.MT. FOR 8 SCHEMING 100 SQ.MT. FLUR AREA	59	59
TOTAL		79	79
LOW VISITORS PARKING		8	8
TOTAL PARKING REQUIRED (A + B)		87	87
PROPOSED PARKING		90	90
TRANSPORT VEHICLES (C)	1 PARKING FOR 2000 SQ.MT		
5128.06			

FLOOR	PARK REQD	NO. OF FLATS	REQ. PARK (4 WHEELER)	REQ. PARK (2 WHEELER)
BELOW 35.00 SQ.MT	1 FOR 4 FLATS	2568	640	2568
35.00 TO 45.00 SQ.MT	1 FOR 2 FLATS	0	0	0
45.00 TO 60.00 SQ.MT	1 FOR 1 FLATS	0	0	0
ABOVE 60.00 SQ.MT	2 FOR 1 FLATS	8	0	0
TOTAL		2568	640	2568
PARKING REQUIRED (COMMERCIAL)			35	35
TOTAL PARKING			675	2584
10% FOR VISITORS PARKING			68	259
PARKING REQUIRED (A + B)			743	2843
PARKING PROVIDED			788	2885

USERS	PARKING REQUIRED AS PER D.C. RULES	PARKING NOS. (4 WHEELER)	PARKING NOS. (2 WHEELER)
PROPOSED AREA	1 PARKING FOR 40 SQ.MT. UPTO 800 SQ.MT	20	20
3849.28			