

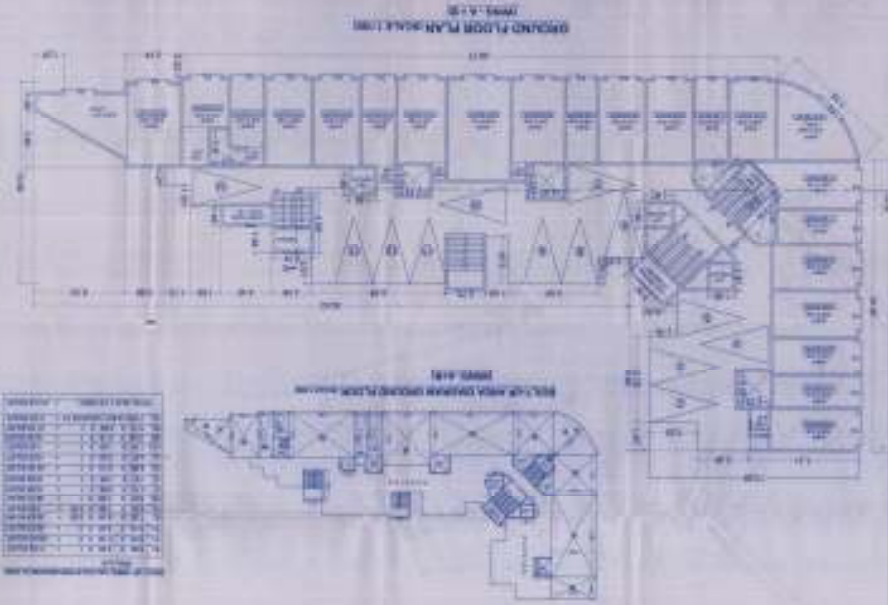
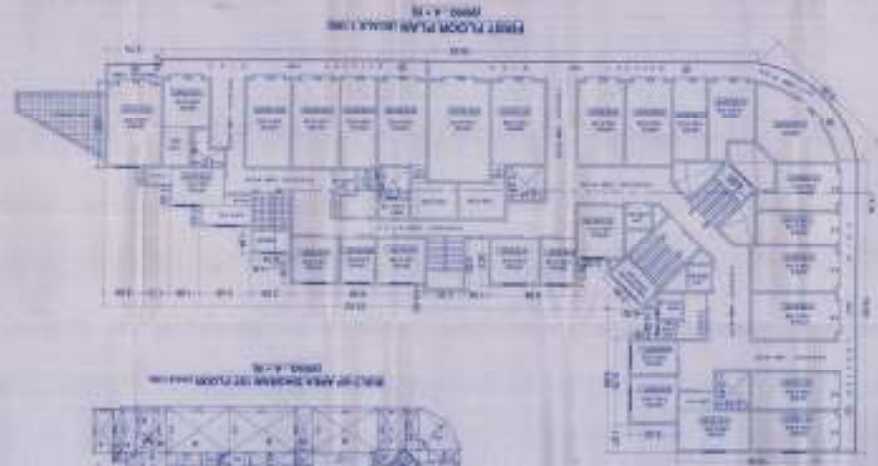
**P. A. ARCHITECTS**  
 ARCHITECTS

ARCHITECT

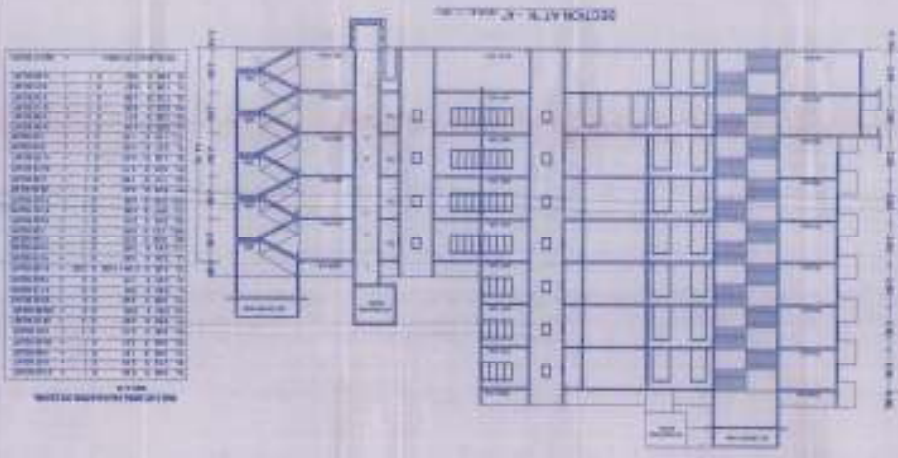
OWNER

THIS PLAN IS A PROFESSIONAL ARCHITECTURAL DRAWING. IT IS THE PROPERTY OF P. A. ARCHITECTS. IT IS TO BE USED ONLY FOR THE PROJECT AND SITE SPECIFICALLY IDENTIFIED HEREON. IT IS NOT TO BE REPRODUCED, COPIED, REPRODUCED, OR TRANSMITTED IN ANY FORM OR BY ANY MEANS, ELECTRONIC OR MECHANICAL, INCLUDING PHOTOCOPYING, RECORDING, OR BY ANY INFORMATION STORAGE AND RETRIEVAL SYSTEM, WITHOUT THE WRITTEN PERMISSION OF P. A. ARCHITECTS.

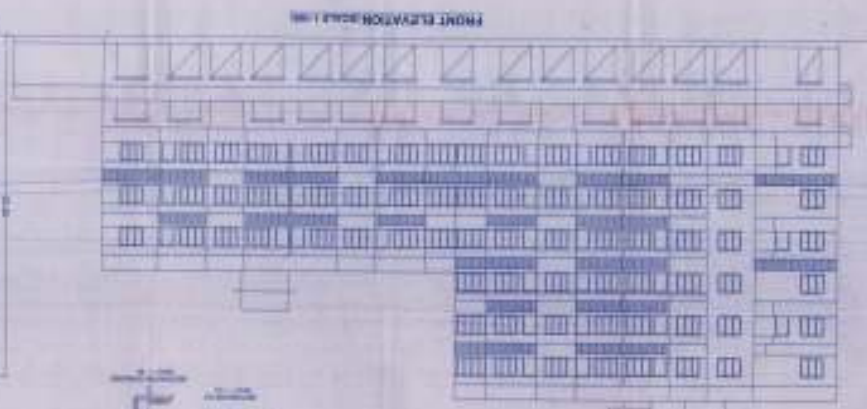
DESCRIPTION



NO.	DESCRIPTION	QTY	UNIT
1	REINFORCING BARS		
2	CONCRETE		
3	FORMWORK		
4	BRICKWORK		
5	PLASTER		
6	PAINT		
7	GLASS		
8	DOORS		
9	WINDOWS		
10	CEILING		
11	FLOORING		
12	MECHANICAL		
13	ELECTRICAL		
14	LANDSCAPE		
15	UTILITIES		
16	FINISHES		
17	FIXTURES		
18	EQUIPMENT		
19	ACCESSORIES		
20	OTHER		



NO.	DESCRIPTION	QTY	UNIT
1	REINFORCING BARS		
2	CONCRETE		
3	FORMWORK		
4	BRICKWORK		
5	PLASTER		
6	PAINT		
7	GLASS		
8	DOORS		
9	WINDOWS		
10	CEILING		
11	FLOORING		
12	MECHANICAL		
13	ELECTRICAL		
14	LANDSCAPE		
15	UTILITIES		
16	FINISHES		
17	FIXTURES		
18	EQUIPMENT		
19	ACCESSORIES		
20	OTHER		



APPROVAL

**REGISTERED ARCHITECT**  
 P. A. ARCHITECTS