

SCHEDULE OF LIGHT & VENTILATION

ROOM	CARPET AREA	REQUIRED	PROVIDED
LIVING	2.74 X 3.50 X 3.58	1.68	1.50 X 1.80 X 2.25
STUDY	2.74 X 3.50 X 3.18	1.52	1.80 X 1.20 X 1.44
KITCHEN	2.44 X 1.35 X 4.83	0.80	1.30 X 1.20 X 1.44
BATH	1.52 X 1.21 X 1.83	0.21	0.40 X 0.90 X 0.54
B.C.	1.37 X 0.91 X 1.23	0.21	0.60 X 0.90 X 0.54

BUILT-UP AREA STATEMENT

FLOOR	CONCRETE AREA	REBAR AREA	EXHAUSTION	TOTAL
01 FLOOR	219.15	-	-	219.15
1ST FLOOR	-	333.88	0.33	334.21
2ND FLOOR	-	333.88	0.33	334.21
3RD FLOOR	-	333.88	0.33	334.21
4TH FLOOR	-	333.88	0.33	334.21
5TH FLOOR	-	333.88	0.33	334.21
6TH FLOOR	-	333.88	0.33	334.21
7TH FLOOR	-	333.88	0.33	334.21
8TH FLOOR	-	333.88	0.33	334.21
9TH FLOOR	-	333.88	0.33	334.21
10TH FLOOR	-	333.88	0.33	334.21
11TH FLOOR	-	333.88	0.33	334.21
12TH FLOOR	-	333.88	0.33	334.21
13TH FLOOR	-	333.88	0.33	334.21
14TH FLOOR	-	333.88	0.33	334.21
TOTAL	219.15	1334.40	1.32	1554.87

TOTAL CONSTRUCTION AREA STATEMENT

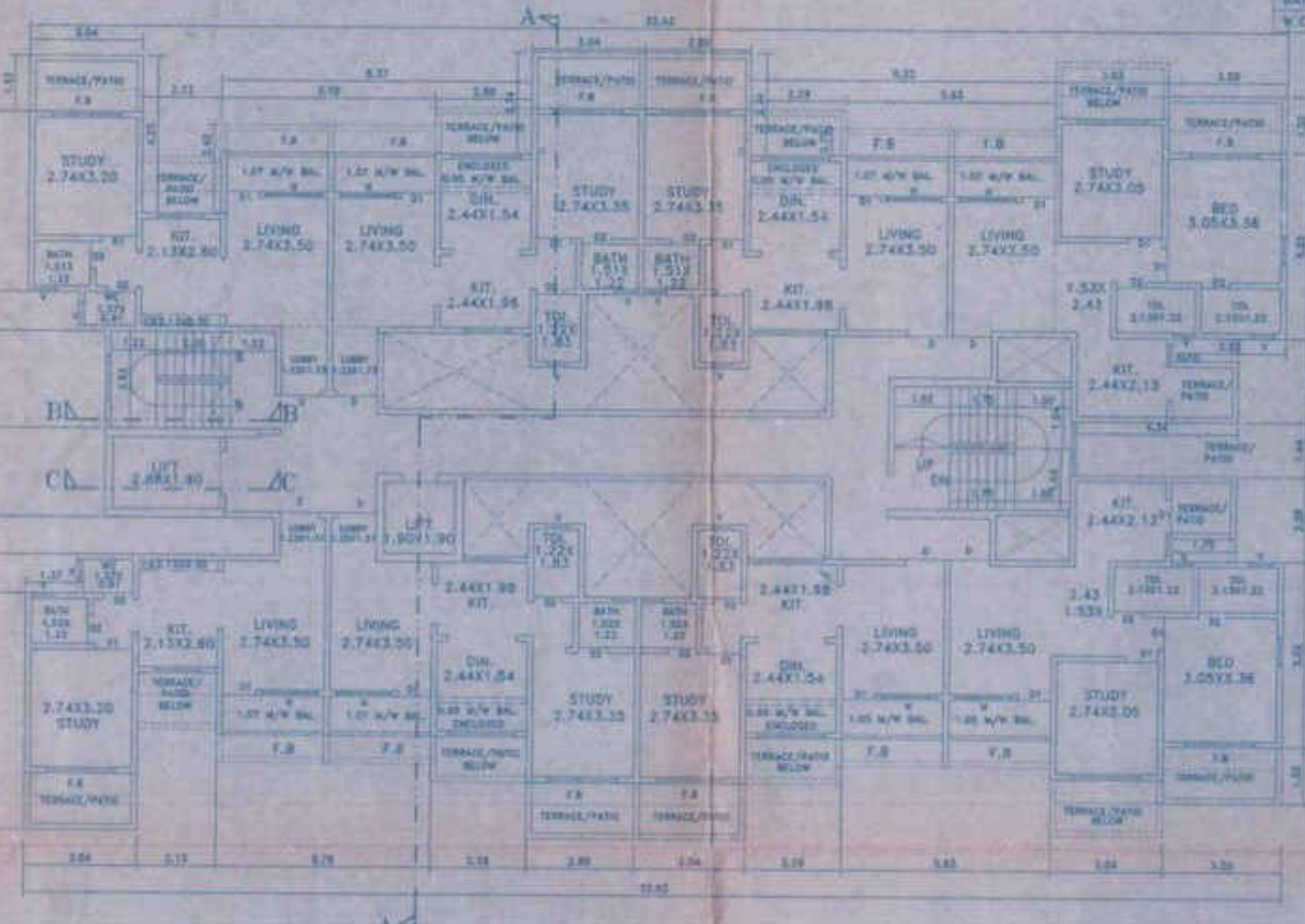
FLOOR	BUILT-UP AREA			FREE OF PSI WITH PREMIUM			FREE OF PSI WITHOUT PREMIUM			GRAND TOTAL
	CONCRETE	REBAR	EXHAUSTION	AREA	AREA	AREA	AREA	AREA	AREA	
01 FLOOR	219.15	-	-	219.15	-	-	219.15	-	-	219.15
1ST FLOOR	-	334.21	0.33	334.21	334.21	0.33	334.21	334.21	0.33	668.75
2ND FLOOR	-	334.21	0.33	334.21	334.21	0.33	334.21	334.21	0.33	668.75
3RD FLOOR	-	334.21	0.33	334.21	334.21	0.33	334.21	334.21	0.33	668.75
4TH FLOOR	-	334.21	0.33	334.21	334.21	0.33	334.21	334.21	0.33	668.75
5TH FLOOR	-	334.21	0.33	334.21	334.21	0.33	334.21	334.21	0.33	668.75
6TH FLOOR	-	334.21	0.33	334.21	334.21	0.33	334.21	334.21	0.33	668.75
7TH FLOOR	-	334.21	0.33	334.21	334.21	0.33	334.21	334.21	0.33	668.75
8TH FLOOR	-	334.21	0.33	334.21	334.21	0.33	334.21	334.21	0.33	668.75
9TH FLOOR	-	334.21	0.33	334.21	334.21	0.33	334.21	334.21	0.33	668.75
10TH FLOOR	-	334.21	0.33	334.21	334.21	0.33	334.21	334.21	0.33	668.75
11TH FLOOR	-	334.21	0.33	334.21	334.21	0.33	334.21	334.21	0.33	668.75
12TH FLOOR	-	334.21	0.33	334.21	334.21	0.33	334.21	334.21	0.33	668.75
13TH FLOOR	-	334.21	0.33	334.21	334.21	0.33	334.21	334.21	0.33	668.75
14TH FLOOR	-	334.21	0.33	334.21	334.21	0.33	334.21	334.21	0.33	668.75
TOTAL	219.15	1334.40	1.32	1554.87	1334.40	1.32	1335.72	1335.72	1.32	2890.59

SCHEDULE OF DOORS & WINDOWS

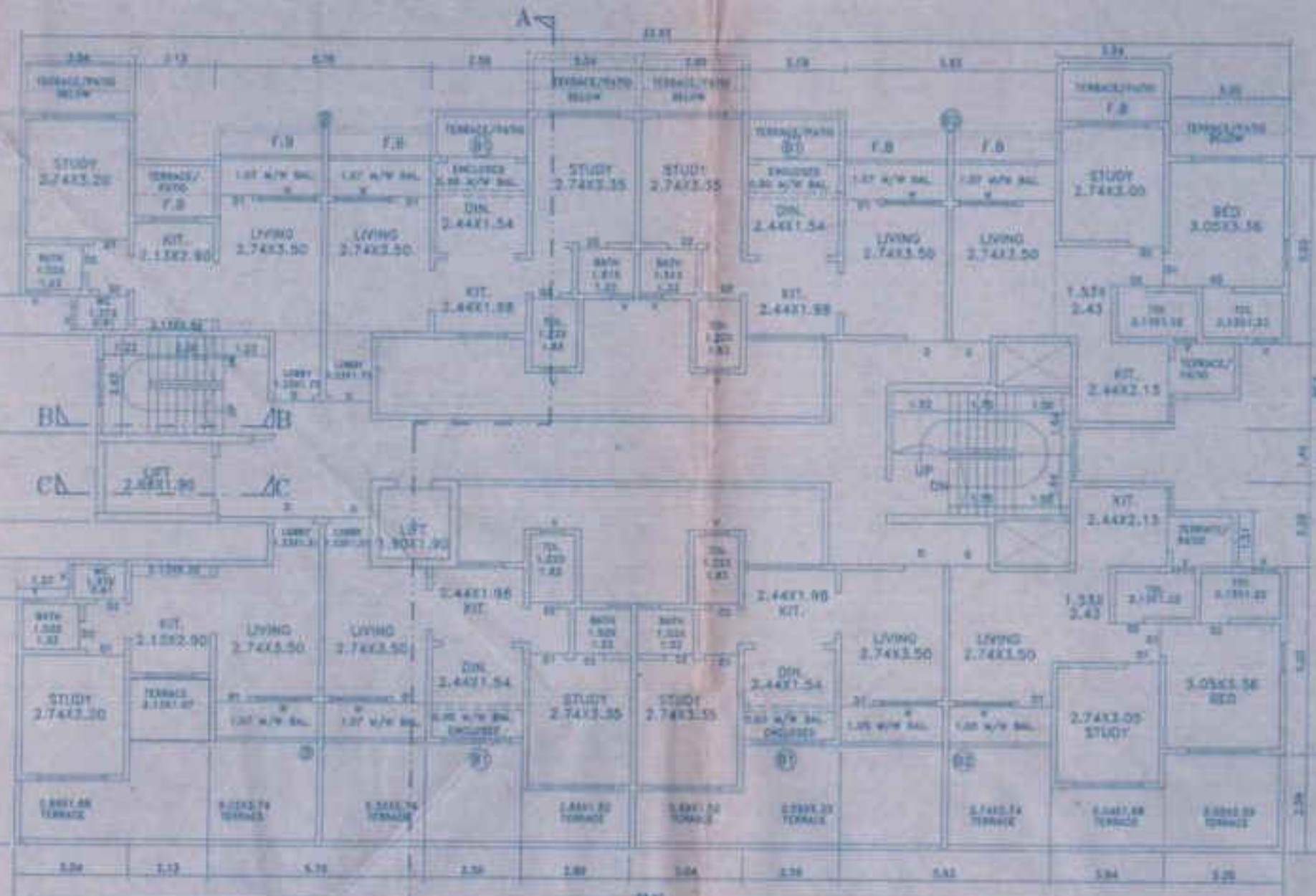
TYPE	SIZE	DESCRIPTION
D	1.80 X 2.10	T.W. FLUSH DOOR
D1	3.90 X 2.10	T.W. FLUSH DOOR
D2	3.25 X 2.10	T.W. FRAME DOOR
W	1.80 X 1.20	ALUMINUM SLIDING WINDOW
W1	1.52 X 1.20	ALUMINUM SLIDING WINDOW
W2	1.20 X 1.20	ALUMINUM SLIDING WINDOW
V	0.60 X 0.30	CONCRETE VENTILATOR

PARKING AREA STATEMENT

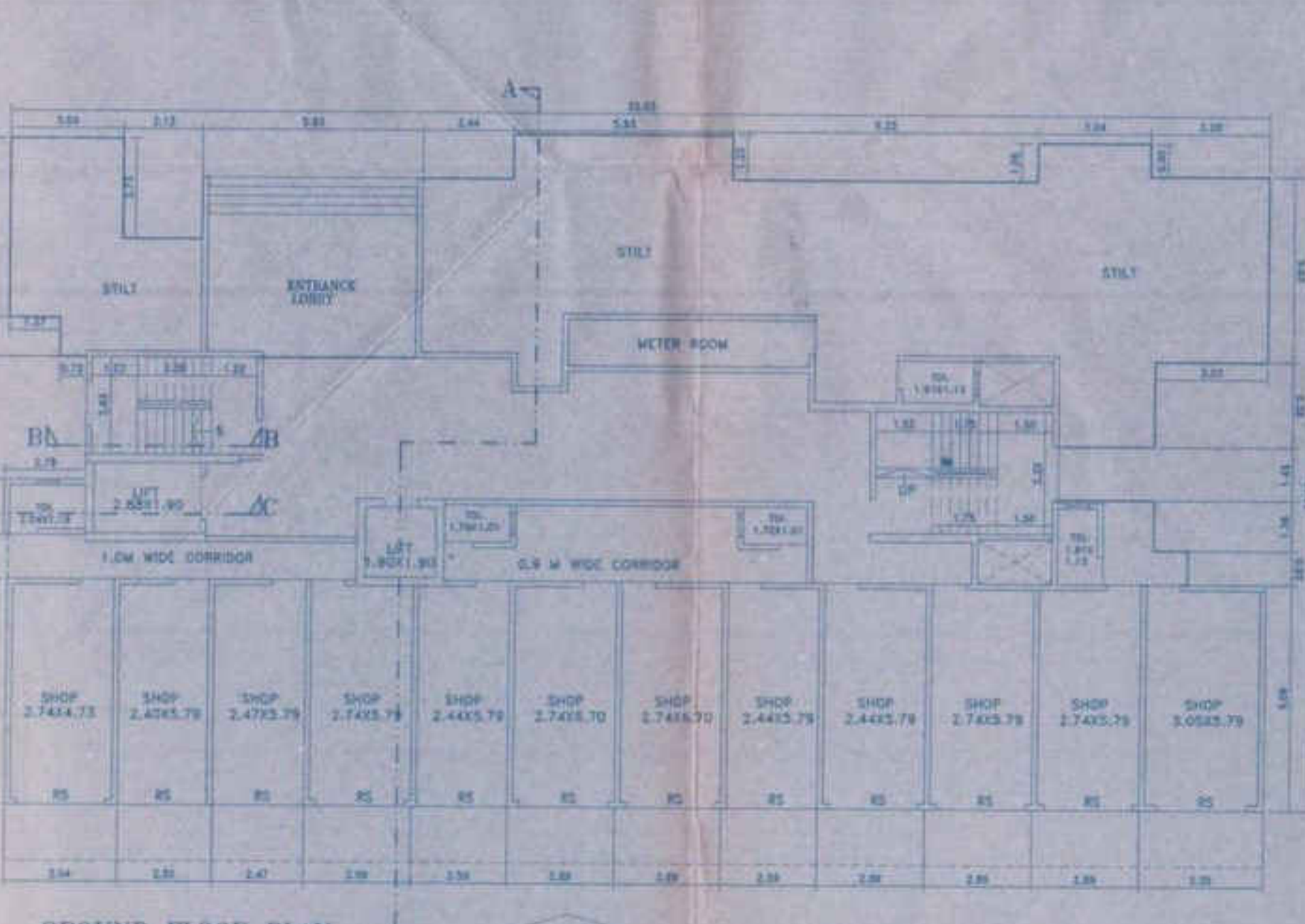
AREA	REQUIREMENT	CAR PARKING	WHEELCHAIR PARKING
STAIR CASE AREA	112/120	112/120	112/120
TERRACE AREA	112/120	112/120	112/120
TOTAL	112/120	112/120	112/120



2ND, 4TH, 6TH, 10TH, 12TH & 14TH FLOOR PLAN
SCALE: 1/100



FIRST FLOOR PLAN
SCALE: 1/100



GROUND FLOOR PLAN
SCALE: 1/100

STAIR CASE AREA STATEMENT

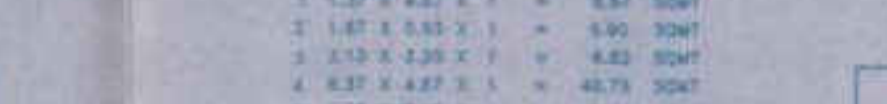
AREA	REQUIREMENT	CAR PARKING	WHEELCHAIR PARKING
STAIR CASE AREA	112/120	112/120	112/120
TERRACE AREA	112/120	112/120	112/120
TOTAL	112/120	112/120	112/120



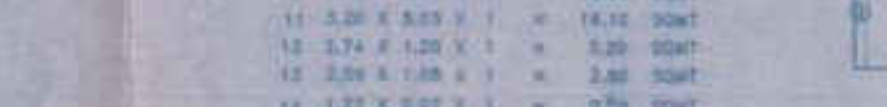
STAIR CASE AREA CALCULATION
FIRST FLOOR SCALE: 1/100

1	1.20 X 2.80 X 1	= 3.36 SQMT
2	2.22 X 2.10 X 1	= 4.66 SQMT
3	2.38 X 2.10 X 1	= 5.00 SQMT
4	2.48 X 2.10 X 1	= 5.21 SQMT
5	2.58 X 2.10 X 1	= 5.41 SQMT
6	2.68 X 2.10 X 1	= 5.62 SQMT
7	2.78 X 2.10 X 1	= 5.83 SQMT
8	2.88 X 2.10 X 1	= 6.04 SQMT
9	2.98 X 2.10 X 1	= 6.25 SQMT
10	3.08 X 2.10 X 1	= 6.46 SQMT
11	3.18 X 2.10 X 1	= 6.67 SQMT
12	3.28 X 2.10 X 1	= 6.88 SQMT
13	3.38 X 2.10 X 1	= 7.09 SQMT
14	3.48 X 2.10 X 1	= 7.30 SQMT
15	3.58 X 2.10 X 1	= 7.51 SQMT
16	3.68 X 2.10 X 1	= 7.72 SQMT
17	3.78 X 2.10 X 1	= 7.93 SQMT
18	3.88 X 2.10 X 1	= 8.14 SQMT
19	3.98 X 2.10 X 1	= 8.35 SQMT
20	4.08 X 2.10 X 1	= 8.56 SQMT
21	4.18 X 2.10 X 1	= 8.77 SQMT
22	4.28 X 2.10 X 1	= 8.98 SQMT
23	4.38 X 2.10 X 1	= 9.19 SQMT
24	4.48 X 2.10 X 1	= 9.40 SQMT
25	4.58 X 2.10 X 1	= 9.61 SQMT
26	4.68 X 2.10 X 1	= 9.82 SQMT
27	4.78 X 2.10 X 1	= 10.03 SQMT
28	4.88 X 2.10 X 1	= 10.24 SQMT
29	4.98 X 2.10 X 1	= 10.45 SQMT
30	5.08 X 2.10 X 1	= 10.66 SQMT
31	5.18 X 2.10 X 1	= 10.87 SQMT
32	5.28 X 2.10 X 1	= 11.08 SQMT
33	5.38 X 2.10 X 1	= 11.29 SQMT
34	5.48 X 2.10 X 1	= 11.50 SQMT
35	5.58 X 2.10 X 1	= 11.71 SQMT
36	5.68 X 2.10 X 1	= 11.92 SQMT
37	5.78 X 2.10 X 1	= 12.13 SQMT
38	5.88 X 2.10 X 1	= 12.34 SQMT
39	5.98 X 2.10 X 1	= 12.55 SQMT
40	6.08 X 2.10 X 1	= 12.76 SQMT
41	6.18 X 2.10 X 1	= 12.97 SQMT
42	6.28 X 2.10 X 1	= 13.18 SQMT
43	6.38 X 2.10 X 1	= 13.39 SQMT
44	6.48 X 2.10 X 1	= 13.60 SQMT
45	6.58 X 2.10 X 1	= 13.81 SQMT
46	6.68 X 2.10 X 1	= 14.02 SQMT
47	6.78 X 2.10 X 1	= 14.23 SQMT
48	6.88 X 2.10 X 1	= 14.44 SQMT
49	6.98 X 2.10 X 1	= 14.65 SQMT
50	7.08 X 2.10 X 1	= 14.86 SQMT
51	7.18 X 2.10 X 1	= 15.07 SQMT
52	7.28 X 2.10 X 1	= 15.28 SQMT
53	7.38 X 2.10 X 1	= 15.49 SQMT
54	7.48 X 2.10 X 1	= 15.70 SQMT
55	7.58 X 2.10 X 1	= 15.91 SQMT
56	7.68 X 2.10 X 1	= 16.12 SQMT
57	7.78 X 2.10 X 1	= 16.33 SQMT
58	7.88 X 2.10 X 1	= 16.54 SQMT
59	7.98 X 2.10 X 1	= 16.75 SQMT
60	8.08 X 2.10 X 1	= 16.96 SQMT
61	8.18 X 2.10 X 1	= 17.17 SQMT
62	8.28 X 2.10 X 1	= 17.38 SQMT
63	8.38 X 2.10 X 1	= 17.59 SQMT
64	8.48 X 2.10 X 1	= 17.80 SQMT
65	8.58 X 2.10 X 1	= 18.01 SQMT
66	8.68 X 2.10 X 1	= 18.22 SQMT
67	8.78 X 2.10 X 1	= 18.43 SQMT
68	8.88 X 2.10 X 1	= 18.64 SQMT
69	8.98 X 2.10 X 1	= 18.85 SQMT
70	9.08 X 2.10 X 1	= 19.06 SQMT
71	9.18 X 2.10 X 1	= 19.27 SQMT
72	9.28 X 2.10 X 1	= 19.48 SQMT
73	9.38 X 2.10 X 1	= 19.69 SQMT
74	9.48 X 2.10 X 1	= 19.90 SQMT
75	9.58 X 2.10 X 1	= 20.11 SQMT
76	9.68 X 2.10 X 1	= 20.32 SQMT
77	9.78 X 2.10 X 1	= 20.53 SQMT
78	9.88 X 2.10 X 1	= 20.74 SQMT
79	9.98 X 2.10 X 1	= 20.95 SQMT
80	10.08 X 2.10 X 1	= 21.16 SQMT
81	10.18 X 2.10 X 1	= 21.37 SQMT
82	10.28 X 2.10 X 1	= 21.58 SQMT
83	10.38 X 2.10 X 1	= 21.79 SQMT
84	10.48 X 2.10 X 1	= 22.00 SQMT
85	10.58 X 2.10 X 1	= 22.21 SQMT
86	10.68 X 2.10 X 1	= 22.42 SQMT
87	10.78 X 2.10 X 1	= 22.63 SQMT
88	10.88 X 2.10 X 1	= 22.84 SQMT
89	10.98 X 2.10 X 1	= 23.05 SQMT
90	11.08 X 2.10 X 1	= 23.26 SQMT
91	11.18 X 2.10 X 1	= 23.47 SQMT
92	11.28 X 2.10 X 1	= 23.68 SQMT
93	11.38 X 2.10 X 1	= 23.89 SQMT
94	11.48 X 2.10 X 1	= 24.10 SQMT
95	11.58 X 2.10 X 1	= 24.31 SQMT
96	11.68 X 2.10 X 1	= 24.52 SQMT
97	11.78 X 2.10 X 1	= 24.73 SQMT
98	11.88 X 2.10 X 1	= 24.94 SQMT
99	11.98 X 2.10 X 1	= 25.15 SQMT
100	12.08 X 2.10 X 1	= 25.36 SQMT

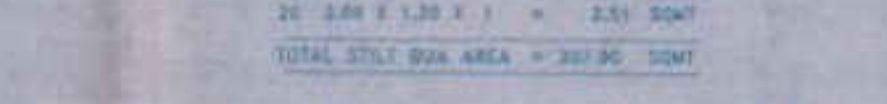
STAIR CASE AREA CALCULATION
TYPICAL FLOOR (ST TO 14TH)
SCALE: 1/100



STAIR CASE AREA CALCULATION
TYPICAL FLOOR (ST TO 14TH)
SCALE: 1/100



STAIR CASE AREA CALCULATION
TYPICAL FLOOR (ST TO 14TH)
SCALE: 1/100



BUILT-UP AREA CALCULATION OF
GROUND FLOOR (COMMERCIAL)

AREA	REQUIREMENT	CAR PARKING	WHEELCHAIR PARKING
STAIR CASE AREA	112/120	112/120	112/120
TERRACE AREA	112/120	112/120	112/120
TOTAL	112/120	112/120	112/120

TERRACE AREA DIAGRAM
1ST FLOOR SCALE: 1/100



TERRACE AREA CALCULATION
FIRST FLOOR

1	2.12 X 1.87 X 1	= 3.96 SQMT
2	2.34 X 1.87 X 1	= 4.38 SQMT
3	2.56 X 1.87 X 1	= 4.79 SQMT
4	2.78 X 1.87 X 1	= 5.20 SQMT
5	3.00 X 1.87 X 1	= 5.61 SQMT
6	3.22 X 1.87 X 1	= 6.02 SQMT
7	3.44 X 1.87 X 1	= 6.43 SQMT
8	3.66 X 1.87 X 1	= 6.84 SQMT
9	3.88 X 1.87 X 1	= 7.25 SQMT
10	4.10 X 1.87 X 1	= 7.66 SQMT
11	4.32 X 1.87 X 1	= 8.07 SQMT
12	4.54 X 1.87 X 1	= 8.48 SQMT
13	4.76 X 1.87 X 1	= 8.89 SQMT
14	4.98 X 1.87 X 1	= 9.30 SQMT
15	5.20 X 1.87 X 1	= 9.71 SQMT
16	5.42 X 1.87 X 1	= 10.12 SQMT
17	5.64 X 1.87 X 1	= 10.53 SQMT
18	5.86 X 1.87 X 1	= 10.94 SQMT
19	6.08 X 1.87 X 1	= 11.35 SQMT
20	6.30 X 1.87 X 1	= 11.76 SQMT
21	6.52 X 1.87 X 1	= 12.17 SQMT
22	6.74 X 1.87 X 1	= 12.58 SQMT
23	6.96 X 1.87 X 1	= 12.99 SQMT
24	7.18 X 1.87 X 1	= 13.40 SQMT
25	7.40 X 1.87 X 1	= 13.81 SQMT
26	7.62 X 1.87 X 1	= 14.22 SQMT
27	7.84 X 1.87 X 1	

