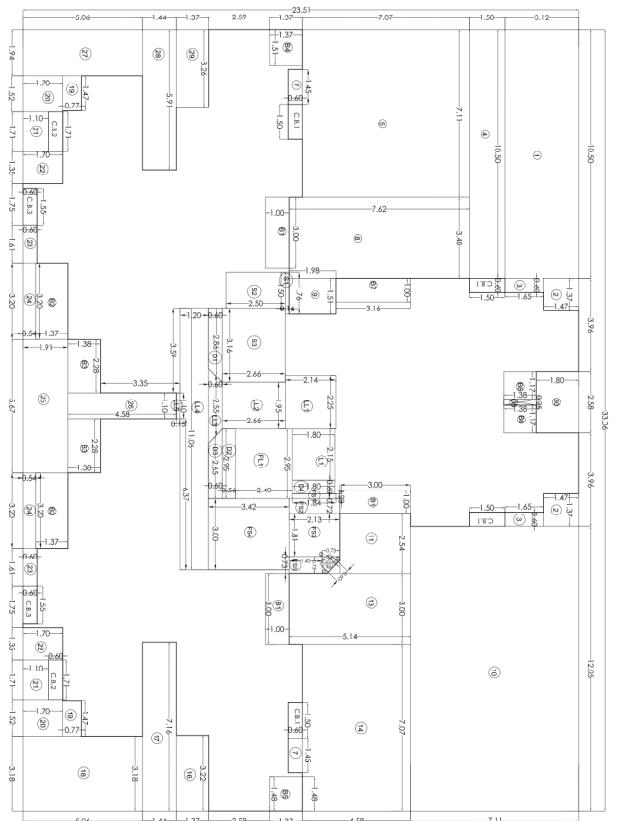


T1 1ST TO 7TH, 9TH TO 12TH, 14TH TO 17TH, 19TH TYPICAL FLOOR PLAN SCALE: 1:100
CLUSTER 03 (CASA WOODLANDS) - WING G, H & I



T1 LINE DIAGRAM 1ST TO 7TH, 9TH TO 12TH, 14TH TO 17TH, 19TH FLOOR SCALE: 1:100
CLUSTER 03 (CASA WOODLANDS) - WING G, H & I

BUILT UP AREA SUMMARY FOR CLUSTER 03A WOODLANDS - CLUSTER 3.03 WING G

FLOOR	GROSS AREA			NET AREA			TOTAL AREA			TOTAL PROPOSED AREA	10% PERMISSIBLE BALCONY AREA	10% EXCESS NET BUILT UP AREA
	a	b	c	d	e	f	g	h	i			
GROUND FLOOR	392.91	11.01	7.08	8.26	3.87	36.65	15.36	0.00	12.00	0.00	310.69	310.69
1ST FLOOR	396.82	16.50	7.08	12.44	3.87	24.88	7.51	22.39	12.16	34.55	291.49	291.49
2ND FLOOR	396.82	16.50	7.08	12.44	3.87	24.88	7.51	22.39	12.16	34.55	291.49	291.49
3RD FLOOR	396.82	16.50	7.08	12.44	3.87	24.88	7.51	22.39	12.16	34.55	291.49	291.49
4TH FLOOR	396.82	16.50	7.08	12.44	3.87	24.88	7.51	22.39	12.16	34.55	291.49	291.49
5TH FLOOR	396.82	16.50	7.08	12.44	3.87	24.88	7.51	22.39	12.16	34.55	291.49	291.49
6TH FLOOR	396.82	16.50	7.08	12.44	3.87	24.88	7.51	22.39	12.16	34.55	291.49	291.49
7TH FLOOR	396.82	16.50	7.08	12.44	3.87	24.88	7.51	22.39	12.16	34.55	291.49	291.49
8TH FLOOR	396.82	16.50	7.08	12.44	3.87	24.88	7.51	22.39	12.16	34.55	291.49	291.49
9TH FLOOR	396.82	16.50	7.08	12.44	3.87	24.88	7.51	22.39	12.16	34.55	291.49	291.49
10TH FLOOR	396.82	16.50	7.08	12.44	3.87	24.88	7.51	22.39	12.16	34.55	291.49	291.49
11TH FLOOR	396.82	16.50	7.08	12.44	3.87	24.88	7.51	22.39	12.16	34.55	291.49	291.49
12TH FLOOR	396.82	16.50	7.08	12.44	3.87	24.88	7.51	22.39	12.16	34.55	291.49	291.49
13TH FLOOR	396.82	16.50	7.08	12.44	3.87	24.88	7.51	22.39	12.16	34.55	291.49	291.49
14TH FLOOR	396.82	16.50	7.08	12.44	3.87	24.88	7.51	22.39	12.16	34.55	291.49	291.49
15TH FLOOR	396.82	16.50	7.08	12.44	3.87	24.88	7.51	22.39	12.16	34.55	291.49	291.49
16TH FLOOR	396.82	16.50	7.08	12.44	3.87	24.88	7.51	22.39	12.16	34.55	291.49	291.49
17TH FLOOR	396.82	16.50	7.08	12.44	3.87	24.88	7.51	22.39	12.16	34.55	291.49	291.49
18TH FLOOR	396.82	16.50	7.08	12.44	3.87	24.88	7.51	22.39	12.16	34.55	291.49	291.49
19TH FLOOR	396.82	16.50	7.08	12.44	3.87	24.88	7.51	22.39	12.16	34.55	291.49	291.49
20TH FLOOR	396.82	16.50	7.08	12.44	3.87	24.88	7.51	22.39	12.16	34.55	291.49	291.49
21TH FLOOR	396.82	16.50	7.08	12.44	3.87	24.88	7.51	22.39	12.16	34.55	291.49	291.49
22TH FLOOR	396.82	16.50	7.08	12.44	3.87	24.88	7.51	22.39	12.16	34.55	291.49	291.49
23TH FLOOR	396.82	16.50	7.08	12.44	3.87	24.88	7.51	22.39	12.16	34.55	291.49	291.49
24TH FLOOR	396.82	16.50	7.08	12.44	3.87	24.88	7.51	22.39	12.16	34.55	291.49	291.49
25TH FLOOR	396.82	16.50	7.08	12.44	3.87	24.88	7.51	22.39	12.16	34.55	291.49	291.49
26TH FLOOR	396.82	16.50	7.08	12.44	3.87	24.88	7.51	22.39	12.16	34.55	291.49	291.49
27TH FLOOR	396.82	16.50	7.08	12.44	3.87	24.88	7.51	22.39	12.16	34.55	291.49	291.49
28TH FLOOR	396.82	16.50	7.08	12.44	3.87	24.88	7.51	22.39	12.16	34.55	291.49	291.49
29TH FLOOR	396.82	16.50	7.08	12.44	3.87	24.88	7.51	22.39	12.16	34.55	291.49	291.49
30TH FLOOR	396.82	16.50	7.08	12.44	3.87	24.88	7.51	22.39	12.16	34.55	291.49	291.49
TOTAL	8006.73	332.50	141.60	244.62	77.40	1112.81	203.86	402.82	230.55	633.38	144.63	5172.47

BUILT UP AREA SUMMARY FOR CLUSTER 03A WOODLANDS - CLUSTER 3.03 WING H

FLOOR	GROSS AREA			NET AREA			TOTAL AREA			TOTAL PROPOSED AREA	10% PERMISSIBLE BALCONY AREA	10% EXCESS NET BUILT UP AREA
	a	b	c	d	e	f	g	h	i			
GROUND FLOOR	392.91	11.01	7.08	8.26	3.87	36.65	15.36	0.00	12.00	0.00	310.69	310.69
1ST FLOOR	396.82	16.50	7.08	12.44	3.87	24.88	7.51	22.39	12.16	34.55	291.49	291.49
2ND FLOOR	396.82	16.50	7.08	12.44	3.87	24.88	7.51	22.39	12.16	34.55	291.49	291.49
3RD FLOOR	396.82	16.50	7.08	12.44	3.87	24.88	7.51	22.39	12.16	34.55	291.49	291.49
4TH FLOOR	396.82	16.50	7.08	12.44	3.87	24.88	7.51	22.39	12.16	34.55	291.49	291.49
5TH FLOOR	396.82	16.50	7.08	12.44	3.87	24.88	7.51	22.39	12.16	34.55	291.49	291.49
6TH FLOOR	396.82	16.50	7.08	12.44	3.87	24.88	7.51	22.39	12.16	34.55	291.49	291.49
7TH FLOOR	396.82	16.50	7.08	12.44	3.87	24.88	7.51	22.39	12.16	34.55	291.49	291.49
8TH FLOOR	396.82	16.50	7.08	12.44	3.87	24.88	7.51	22.39	12.16	34.55	291.49	291.49
9TH FLOOR	396.82	16.50	7.08	12.44	3.87	24.88	7.51	22.39	12.16	34.55	291.49	291.49
10TH FLOOR	396.82	16.50	7.08	12.44	3.87	24.88	7.51	22.39	12.16	34.55	291.49	291.49
11TH FLOOR	396.82	16.50	7.08	12.44	3.87	24.88	7.51	22.39	12.16	34.55	291.49	291.49
12TH FLOOR	396.82	16.50	7.08	12.44	3.87	24.88	7.51	22.39	12.16	34.55	291.49	291.49
13TH FLOOR	396.82	16.50	7.08	12.44	3.87	24.88	7.51	22.39	12.16	34.55	291.49	291.49
14TH FLOOR	396.82	16.50	7.08	12.44	3.87	24.88	7.51	22.39	12.16	34.55	291.49	291.49
15TH FLOOR	396.82	16.50	7.08	12.44	3.87	24.88	7.51	22.39	12.16	34.55	291.49	291.49
16TH FLOOR	396.82	16.50	7.08	12.44	3.87	24.88	7.51	22.39	12.16	34.55	291.49	291.49
17TH FLOOR	396.82	16.50	7.08	12.44	3.87	24.88	7.51	22.39	12.16	34.55	291.49	291.49
18TH FLOOR	396.82	16.50	7.08	12.44	3.87	24.88	7.51	22.39	12.16	34.55	291.49	291.49
19TH FLOOR	396.82	16.50	7.08	12.44	3.87	24.88	7.51	22.39	12.16	34.55	291.49	291.49
20TH FLOOR	396.82	16.50	7.08	12.44	3.87	24.88	7.51	22.39	12.16	34.55	291.49	291.49
21TH FLOOR	396.82	16.50	7.08	12.44	3.87	24.88	7.51	22.39	12.16	34.55	291.49	291.49
22TH FLOOR	396.82	16.50	7.08	12.44	3.87	24.88	7.51	22.39	12.16	34.55	291.49	291.49
23TH FLOOR	396.82	16.50	7.08	12.44	3.87	24.88	7.51	22.39	12.16	34.55	291.49	291.49
24TH FLOOR	396.82	16.50	7.08	12.44	3.87	24.88	7.51	22.39	12.16	34.55	291.49	291.49
25TH FLOOR	396.82	16.50	7.08	12.44	3.87	24.88	7.51	22.39	12.16	34.55	291.49	291.49
26TH FLOOR	396.82	16.50	7.08	12.44	3.87	24.88	7.51	22.39	12.16	34.55	291.49	291.49
27TH FLOOR	396.82	16.50	7.08	12.44	3.87	24.88	7.51	22.39	12.16	34.55	291.49	291.49
28TH FLOOR	396.82	16.50	7.08	12.44	3.87	24.88	7.51	22.39	12.16	34.55	291.49	291.49
29TH FLOOR	396.82	16.50	7.08	12.44	3.87	24.88	7.51	22.39	12.16	34.55	291.49	291.49
30TH FLOOR	396.82	16.50	7.08	12.44	3.87	24.88	7.51	22.39	12.16	34.55	291.49	291.49
TOTAL	8006.73	332.50	141.60	244.62	77.40	1112.81	203.86	402.82	230.55	633.38	144.63	5172.47

2024 VILLAGE WOODLANDS TOWNSHIP PROJECT

NO.	DESCRIPTION	UNIT	QUANTITY	UNIT PRICE	TOTAL PRICE
1	CONCRETE WORK	M ³	1000	1000	1000000
2	STEEL WORK	T	500	500	250000
3	PAINT WORK	M ²	2000	2000	400000
4	PLASTER WORK	M ²	3000	3000	900000
5	ROOFING WORK	M ²	1500	1500	225000
6	MECHANICAL WORK	M	100	100	10000
7	ELECTRICAL WORK	M	100	100	10000
8	WATER SUPPLY WORK	M	100	100	10000
9	SEWERAGE WORK	M	100	100	10000
10	LANDSCAPING WORK	M ²	5000	5000	2500000
11	CONCRETE WORK	M ³	1000	1000	1000000
12	STEEL WORK	T	500	500	250000
13	PAINT WORK	M ²	2000	2000	400000
14	PLASTER WORK	M ²	3000	3000	900000
15	ROOFING WORK	M ²	1500	1500	225000
16	MECHANICAL WORK	M	100	100	10000
17	ELECTRICAL WORK	M	100	100	10000
18	WATER SUPPLY WORK	M	100	100	10000
19	SEWERAGE WORK	M	100	100	10000
20	LANDSCAPING WORK	M ²	5000	5000	2500000

PROFROMA - B DWG. NO.3

PROPOSED INTEGRATED TOWNSHIP PROJECT

TYPE A

GR + 19 UPPER FLOORS

CASA WOODLANDS - CLUSTER 3.03 WING - G, H, I

GROUND & TYPICAL FLOOR PLAN, LINE DIAGRAM

BUILT UP AREA CALCULATIONS

CARPET AREA STATEMENT

APPROVING AUTHORITY

ALL DIMENSION ARE IN METERS

DESCRIPTION OF PROPOSAL AND PROPERTY

INTEGRATED TOWNSHIP PROJECT AT VILLAGES AJURASDAI

MANROOL & VILLAGES BHIMNADI, TALUQA THANE, DIST THANE

VILLAGES MANROOL:-

61/8, 61/7, 61/9, 61/10, 61/11, 61/12, 61/13, 61/14, 61/15, 61/16, 61/17, 61/18, 61/19, 61/20, 61/21, 61/22, 61/23, 61/24, 61/25, 61/26, 61/27,