

PROPOSED INTEGRATED TOWNSHIP PROJECT

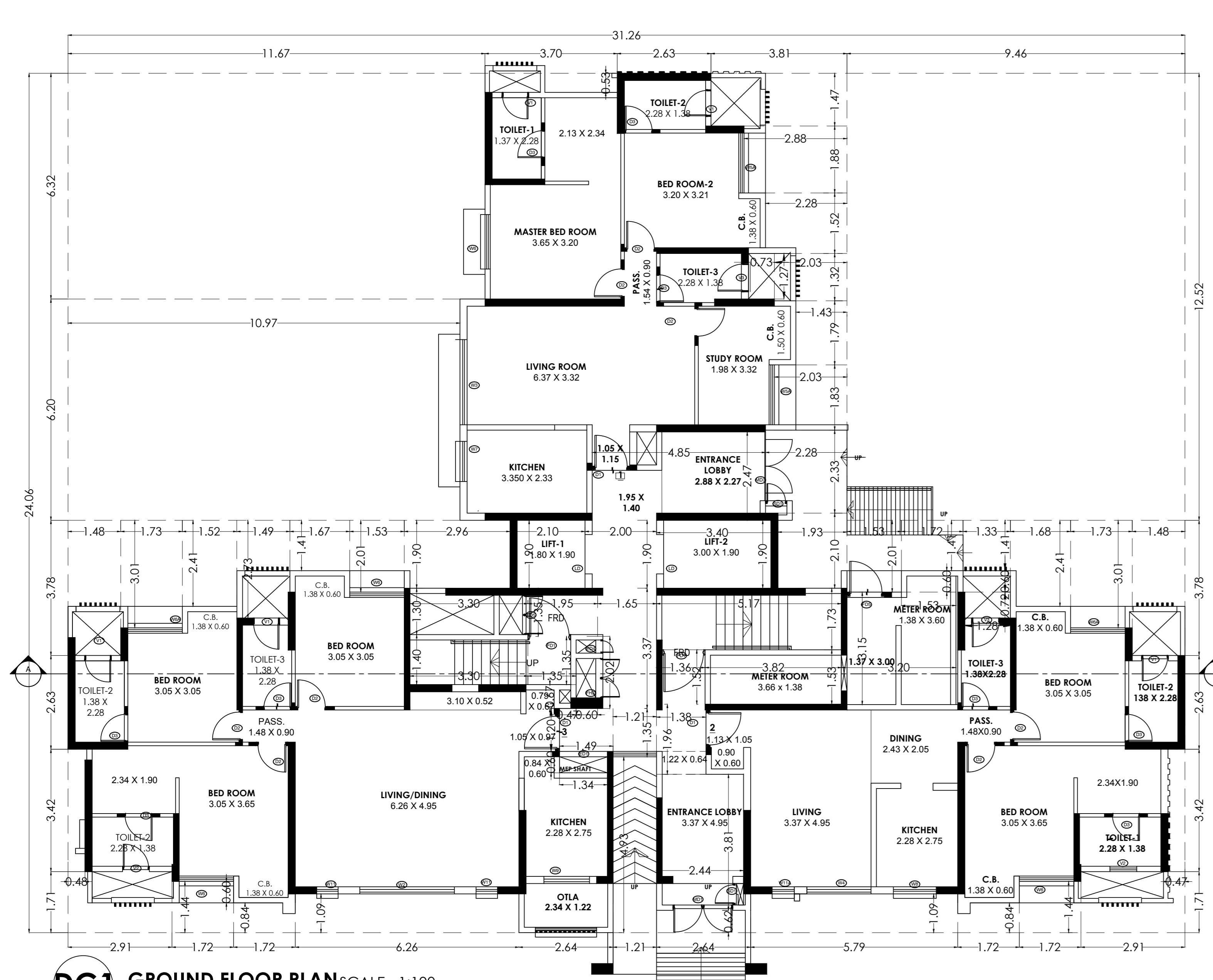
GR + 19 UPPER FLOORS ( D TYPE)

CLUSTER 1.03 (CASA TIARA) - WING - D

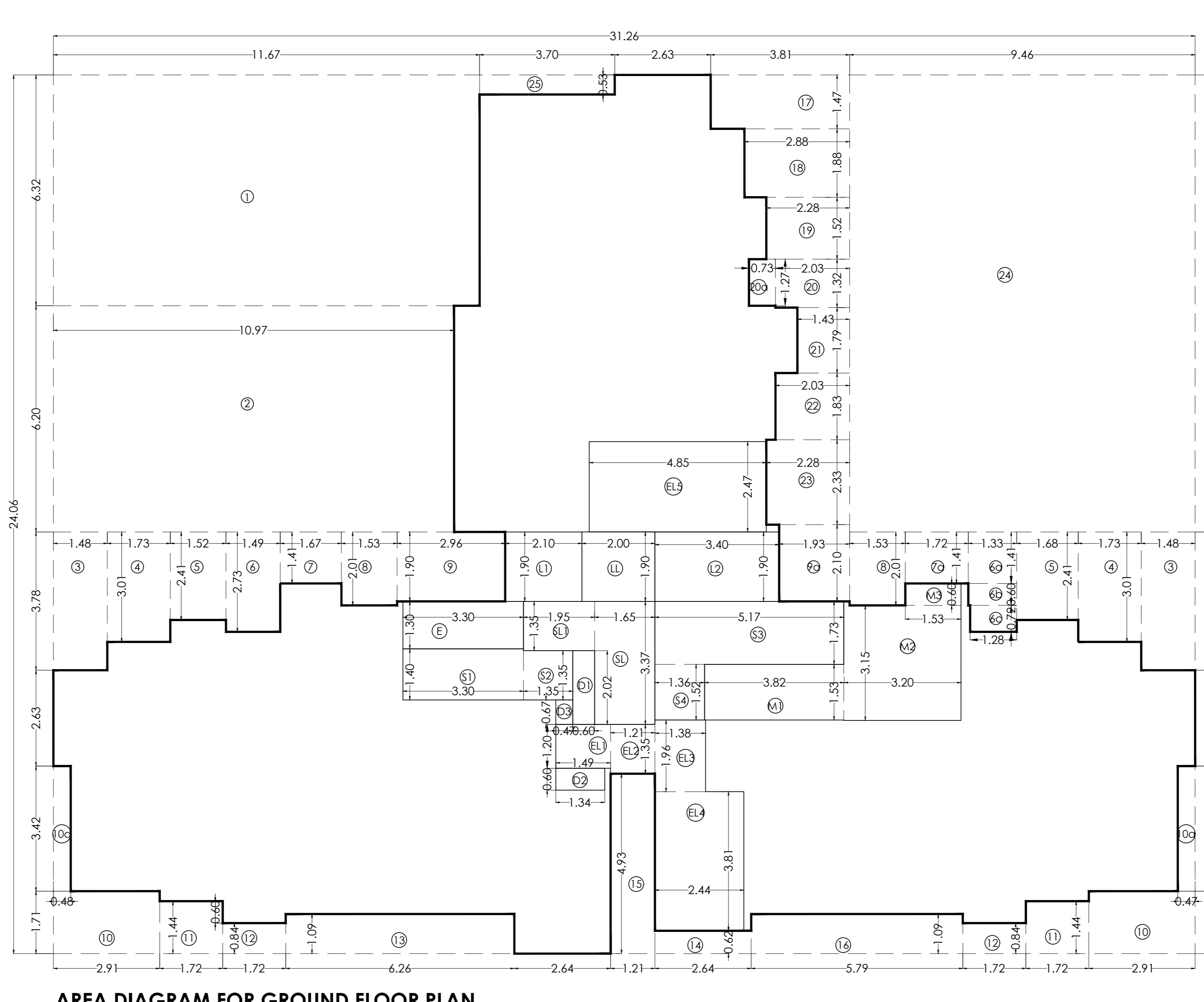
GROUND FLOOR PLAN, TYPICAL FLOOR PLAN  
LINE AREA DIAGRAM BUILT UP AREA CALCULATIONS,  
CARPET AREA STATEMENT

APPROVING AUTHORITY

ALL DIMENSION ARE IN METER

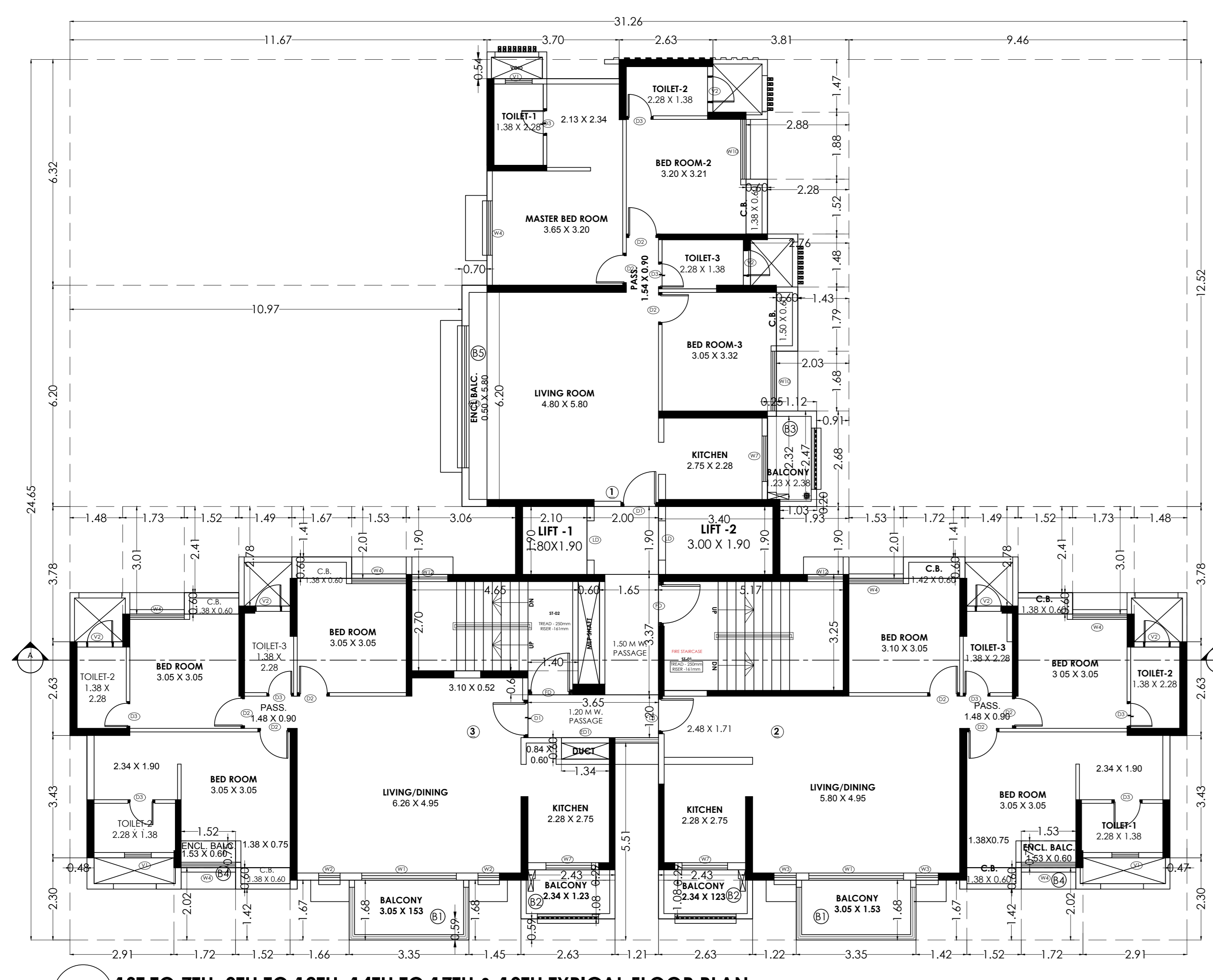


**DG1** GROUND FLOOR PLAN SCALE - 1:100  
CLUSTER 1.03 (CASA TIARA) WING - D

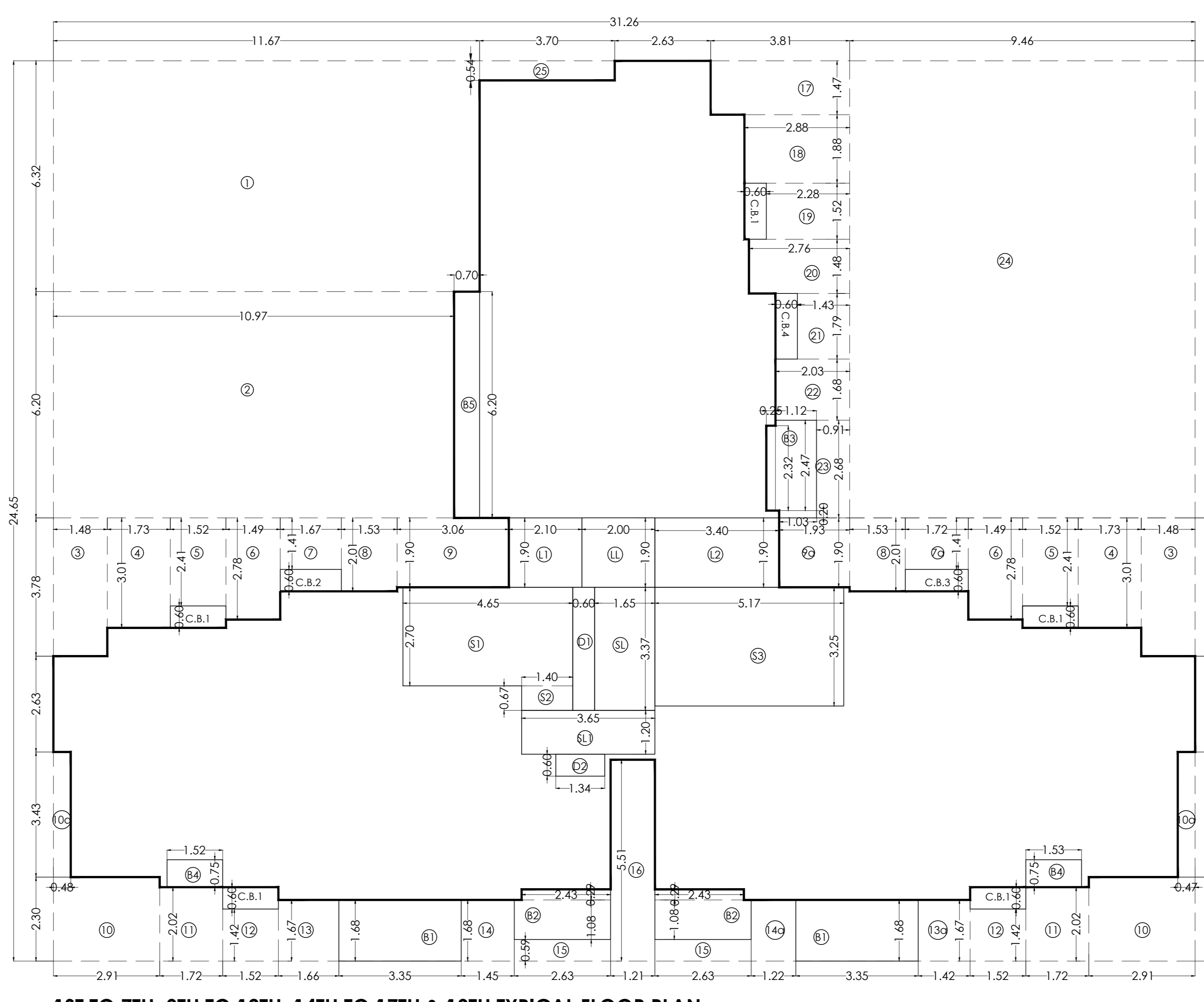


**AREA DIAGRAM FOR GROUND FLOOR PLAN**  
SCALE - 1:100

BUILT UP AREA CALCULATION FOR		TYPICAL FLOOR PLAN	
AREA OF BLOCK	31.26 X 24.06 X 1	752.12 SQMT.	752.12 SQMT.
<b>TOTAL AREA</b>			
<b>STANDARD DEDUCTIONS</b>			
1	11.67 X 6.32 X 1	=	73.75 SQMT
2	10.97 X 6.20 X 1	=	68.01 SQMT
3	3.48 X 3.76 X 2	=	11.19 SQMT
4	1.73 X 3.91 X 2	=	10.41 SQMT
5	1.52 X 2.41 X 2	=	7.33 SQMT
6	1.48 X 2.78 X 1	=	4.14 SQMT
7	1.67 X 1.41 X 1	=	2.35 SQMT
8	1.53 X 2.01 X 2	=	6.15 SQMT
9	3.06 X 1.90 X 1	=	5.81 SQMT
10	2.91 X 1.71 X 2	=	9.95 SQMT
11	1.72 X 1.44 X 2	=	4.95 SQMT
12	1.72 X 0.84 X 2	=	2.88 SQMT
13	3.46 X 1.99 X 1	=	7.04 SQMT
14	2.64 X 0.62 X 1	=	1.64 SQMT
15	1.21 X 4.93 X 1	=	5.97 SQMT
16	3.79 X 1.99 X 1	=	7.54 SQMT
17	3.81 X 1.47 X 1	=	5.50 SQMT
18	2.88 X 1.88 X 1	=	5.41 SQMT
19	2.28 X 1.52 X 1	=	3.47 SQMT
20	2.03 X 1.32 X 1	=	2.68 SQMT
21	1.43 X 1.80 X 1	=	2.57 SQMT
22	2.03 X 1.83 X 1	=	3.71 SQMT
23	2.29 X 2.33 X 1	=	5.33 SQMT
24	9.46 X 12.52 X 1	=	118.44 SQMT
25	3.70 X 0.53 X 1	=	1.96 SQMT
D1	3.03 X 1.92 X 1	=	5.81 SQMT
D2	1.34 X 0.80 X 1	=	1.07 SQMT
D3	0.47 X 1.87 X 1	=	0.87 SQMT
<b>TOTAL AREA</b>			<b>380.47 SQMT.</b>
<b>GROSS AREA (A+B)</b>			
			<b>388.65 SQMT.</b>
<b>OTHER DEDUCTIONS</b>			
<b>STAIRCASE</b>			
S1	3.30 X 1.40 X 1	=	4.62 SQMT
S2	1.35 X 1.35 X 1	=	1.82 SQMT
<b>TOTAL AREA</b>			<b>6.44 SQMT.</b>
<b>LIFT</b>			
L1	2.10 X 1.90 X 1	=	3.99 SQMT
<b>TOTAL AREA</b>			<b>3.99 SQMT.</b>
<b>FIRE STAIRCASE</b>			
FS1	5.17 X 1.73 X 1	=	8.94 SQMT
FS2	1.38 X 1.52 X 1	=	2.07 SQMT
<b>TOTAL AREA</b>			<b>11.01 SQMT.</b>
<b>FIRE LIFT</b>			
FL1	3.40 X 1.90 X 1	=	6.46 SQMT
<b>TOTAL AREA</b>			<b>6.46 SQMT.</b>
<b>STAIRCASE LIFT LOBBY</b>			
SL1	1.65 X 1.37 X 1	=	2.26 SQMT
SL2	2.00 X 1.90 X 1	=	3.80 SQMT
EL1	1.49 X 1.20 X 1	=	1.78 SQMT
EL2	1.21 X 1.35 X 1	=	1.63 SQMT
EL3	1.38 X 1.98 X 1	=	2.70 SQMT
EL4	2.44 X 3.81 X 1	=	9.30 SQMT
EL5	4.85 X 2.47 X 1	=	11.98 SQMT
<b>TOTAL AREA</b>			<b>39.39 SQMT.</b>
<b>METER ROOM AREA</b>			
MT	3.82 X 1.53 X 1	=	5.84 SQMT
M2	3.20 X 2.14 X 1	=	6.85 SQMT
M3	1.63 X 1.60 X 1	=	2.63 SQMT
E	3.30 X 1.30 X 1	=	4.29 SQMT
<b>TOTAL AREA</b>			<b>21.31 SQMT.</b>
<b>FREE OF F.S.I AREA (D+E+G+H+I)</b>			
			<b>88.42 SQMT.</b>
<b>TOTAL BUILT UP AREA (C-J)</b>			<b>270.23 SQMT.</b>



**DT** 1ST TO 7TH, 9TH TO 12TH, 14TH TO 17TH & 19TH TYPICAL FLOOR PLAN  
SCALE - 1:100 CLUSTER 1.03 (CASA TIARA) WING - D



**1ST TO 7TH, 9TH TO 12TH, 14TH TO 17TH & 19TH TYPICAL FLOOR PLAN**  
SCALE - 1:100

BUILT UP AREA CALCULATION FOR		TYPICAL FLOOR PLAN	
AREA OF BLOCK	31.26 X 24.06 X 1	770.56 SQMT.	770.56 SQMT.
<b>TOTAL AREA</b>			
<b>STANDARD DEDUCTIONS</b>			
1	11.67 X 6.32 X 1	=	73.75 SQMT
2	10.97 X 6.20 X 1	=	68.01 SQMT
3	3.48 X 3.76 X 2	=	11.19 SQMT
4	1.73 X 3.91 X 2	=	10.41 SQMT
5	1.52 X 2.41 X 2	=	7.33 SQMT
6	1.48 X 2.78 X 1	=	4.14 SQMT
7	1.67 X 1.41 X 1	=	2.35 SQMT
8	1.53 X 2.01 X 2	=	6.15 SQMT
9	3.06 X 1.90 X 1	=	5.81 SQMT
10	2.91 X 1.71 X 2	=	9.95 SQMT
11	1.72 X 1.44 X 2	=	4.95 SQMT
12	1.72 X 0.84 X 2	=	2.88 SQMT
13	3.46 X 1.99 X 1	=	7.04 SQMT
14	2.64 X 0.62 X 1	=	1.64 SQMT
15	1.21 X 4.93 X 1	=	5.97 SQMT
16	3.79 X 1.99 X 1	=	7.54 SQMT
17	3.81 X 1.47 X 1	=	5.50 SQMT
18	2.88 X 1.88 X 1	=	5.41 SQMT
19	2.28 X 1.52 X 1	=	3.47 SQMT
20	2.03 X 1.32 X 1	=	2.68 SQMT
21	1.43 X 1.80 X 1	=	2.57 SQMT
22	2.03 X 1.83 X 1	=	3.71 SQMT
23	2.29 X 2.33 X 1	=	5.33 SQMT
24	9.46 X 12.52 X 1	=	118.44 SQMT
25	3.70 X 0.53 X 1	=	1.96 SQMT
D1	3.03 X 1.92 X 1	=	5.81 SQMT
D2	1.34 X 0.80 X 1	=	1.07 SQMT
D3	0.47 X 1.87 X 1	=	0.87 SQMT
<b>TOTAL AREA</b>			<b>380.47 SQMT.</b>
<b>GROSS AREA (A+B)</b>			
			<b>388.65 SQMT.</b>
<b>OTHER DEDUCTIONS</b>			
<b>STAIRCASE</b>			
S1	4.86 X 2.70 X 1	=	13.26 SQMT
S2	1.60 X 1.60 X 1	=	2.56 SQMT
<b>TOTAL AREA</b>			<b>15.82 SQMT.</b>
<b>LIFT</b>			
L1	2.10 X 1.90 X 1	=	3.99 SQMT
<b>TOTAL AREA</b>			<b>3.99 SQMT.</b>
<b>FIRE STAIRCASE</b>			
FS1	5.17 X 1.73 X 1	=	8.94 SQMT
<b>TOTAL AREA</b>			<b>8.94 SQMT.</b>
<b>FIRE LIFT</b>			
FL1	3.40 X 1.90 X 1	=	6.46 SQMT
<b>TOTAL AREA</b>			<b>6.46 SQMT.</b>
<b>STAIRCASE LIFT LOBBY</b>			
SL1	1.65 X 1.37 X 1	=	2.26 SQMT
SL2	1.65 X 1.20 X 1	=	1.98 SQMT
LL	2.00 X 1.90 X 1	=	3.80 SQMT
<b>TOTAL AREA</b>			<b>8.04 SQMT.</b>
<b>CUPBOARD AREA</b>			
CB1	1.52 X 0.60 X 3	=	2.72 SQMT
CB2	1.47 X 0.60 X 1	=	0.88 SQMT
CB3	1.72 X 0.60 X 1	=	1.03 SQMT
CB4	1.39 X 1.09 X 1	=	1.51 SQMT
<b>TOTAL AREA</b>			<b>5.14 SQMT.</b>
<b>FREE OF F.S.I AREA (D+E+G+H+I)</b>			
			<b>62.18 SQMT.</b>
<b>TOTAL BUILT UP AREA (N-P)</b>			<b>283.21 SQMT.</b>

DESCRIPTION OF PROPOSAL AND PROPERTY

ITP PROJECT AT VILLAGE ANJUR,SURAI, MANKOLI & VILLAGE BHIWANDI,  
TALUKA THANE, DIST THANE.

**VILLAGE MANKOLI -**  
41/6, 41/7, 41/9, 41/10P, 45/3, 45/4, 45/5, 45/7, 47/3, 47/4P, 47/5, 48/11P, 49/1P, 51/1,  
51/2, 52/1, 52/2, 53/A, 53/B, 53/C, 54/4, 54/5A, 54/5B, 54/5C, 55/10, 55/11P, 55/14,  
55/15.56/1P, 56/1B, 56/1P, 57.58.60/2.62/0, 63/0, 65/1, 66/2, 66/3, 66/4, 67/11, 68/2P

**VILLAGE ANJUR -**  
239.253/P, 254/P, 255/1A, 255/1B, 255/2, 255/3, 256/0, 263/0, 265/2, 265/3, 265/4P,  
266/0, 269/3, 270/P, 271/0, 272/P, 275/P, 276/P, 291/P, 293/1, 298/3

**VILLAGE SURAI -**  
12/1, 12/3, 12/4, 12/15, 14/5, 14/6, 14/7, 14/8, 14/10P, 14/11, 14/12, 14/13P, 14/14,  
14/15, 14/16, 14/17, 15/3, 15/4, 15/7, 15/8, 15/9, 15/11, 15/12, 17/1, 17/2, 19/1, 19/2,  
19/3, 19/4, 21/0, 22/1P, 23/0, 24/0, 25/1/2, 25/2P, 26/1P, 27/2, 28/14P, 34/1, 34/2P,  
35/1P, 35/2, 37/3, 39/P, 40/7, 40/8P

NAME OF OWNER

M/S AJITNATH HI-TECH BUILDERS PVT.LTD.  
216, 2ND FL. SHAH & NAHAR IND. EST.  
DR. E. MOSES ROAD, WORLI, MUMBAI - 18

NAME OF ARCHITECT

PRADEEP KAMBLE  
ARCHITECT CA87/10471  
PRADEEP KAMBLE & ASSOCIATES  
B-101, 1st FL., JAKH BUTERA COMPLEX,  
PANDIT MALVIYA PATH, RAMNAGAR,  
DOMBHIVLI ( W ) - 421 201, TEL - 2862642