

FLOOR AREA CALCULATION OF 1ST FLOOR - AMENITY AREA

NO.	DESCRIPTION	AREA (SQ. FT.)	AREA (SQ. M.)
1	AMENITY AREA	1,100	101.67
2	STAIRS	1,200	111.48
3	LOBBY	1,300	121.29
4	REAR COURT	1,400	130.10
5	STAIRS	1,500	139.03
6	LOBBY	1,600	148.04
7	REAR COURT	1,700	157.05
8	STAIRS	1,800	166.06
9	LOBBY	1,900	175.07
10	REAR COURT	2,000	184.08
11	STAIRS	2,100	193.09
12	LOBBY	2,200	202.10
13	REAR COURT	2,300	211.11
14	STAIRS	2,400	220.12
15	LOBBY	2,500	229.13
16	REAR COURT	2,600	238.14
17	STAIRS	2,700	247.15
18	LOBBY	2,800	256.16
19	REAR COURT	2,900	265.17
20	STAIRS	3,000	274.18
21	LOBBY	3,100	283.19
22	REAR COURT	3,200	292.20
23	STAIRS	3,300	301.21
24	LOBBY	3,400	310.22
25	REAR COURT	3,500	319.23
26	STAIRS	3,600	328.24
27	LOBBY	3,700	337.25
28	REAR COURT	3,800	346.26
29	STAIRS	3,900	355.27
30	LOBBY	4,000	364.28
31	REAR COURT	4,100	373.29
32	STAIRS	4,200	382.30
33	LOBBY	4,300	391.31
34	REAR COURT	4,400	400.32
35	STAIRS	4,500	409.33
36	LOBBY	4,600	418.34
37	REAR COURT	4,700	427.35
38	STAIRS	4,800	436.36
39	LOBBY	4,900	445.37
40	REAR COURT	5,000	454.38
41	STAIRS	5,100	463.39
42	LOBBY	5,200	472.40
43	REAR COURT	5,300	481.41
44	STAIRS	5,400	490.42
45	LOBBY	5,500	499.43
46	REAR COURT	5,600	508.44
47	STAIRS	5,700	517.45
48	LOBBY	5,800	526.46
49	REAR COURT	5,900	535.47
50	STAIRS	6,000	544.48
51	LOBBY	6,100	553.49
52	REAR COURT	6,200	562.50
53	STAIRS	6,300	571.51
54	LOBBY	6,400	580.52
55	REAR COURT	6,500	589.53
56	STAIRS	6,600	598.54
57	LOBBY	6,700	607.55
58	REAR COURT	6,800	616.56
59	STAIRS	6,900	625.57
60	LOBBY	7,000	634.58
61	REAR COURT	7,100	643.59
62	STAIRS	7,200	652.60
63	LOBBY	7,300	661.61
64	REAR COURT	7,400	670.62
65	STAIRS	7,500	679.63
66	LOBBY	7,600	688.64
67	REAR COURT	7,700	697.65
68	STAIRS	7,800	706.66
69	LOBBY	7,900	715.67
70	REAR COURT	8,000	724.68
71	STAIRS	8,100	733.69
72	LOBBY	8,200	742.70
73	REAR COURT	8,300	751.71
74	STAIRS	8,400	760.72
75	LOBBY	8,500	769.73
76	REAR COURT	8,600	778.74
77	STAIRS	8,700	787.75
78	LOBBY	8,800	796.76
79	REAR COURT	8,900	805.77
80	STAIRS	9,000	814.78
81	LOBBY	9,100	823.79
82	REAR COURT	9,200	832.80
83	STAIRS	9,300	841.81
84	LOBBY	9,400	850.82
85	REAR COURT	9,500	859.83
86	STAIRS	9,600	868.84
87	LOBBY	9,700	877.85
88	REAR COURT	9,800	886.86
89	STAIRS	9,900	895.87
90	LOBBY	10,000	904.88
91	REAR COURT	10,100	913.89
92	STAIRS	10,200	922.90
93	LOBBY	10,300	931.91
94	REAR COURT	10,400	940.92
95	STAIRS	10,500	949.93
96	LOBBY	10,600	958.94
97	REAR COURT	10,700	967.95
98	STAIRS	10,800	976.96
99	LOBBY	10,900	985.97
100	REAR COURT	11,000	994.98
101	STAIRS	11,100	1,003.99
102	LOBBY	11,200	1,012.99
103	REAR COURT	11,300	1,021.99
104	STAIRS	11,400	1,030.99
105	LOBBY	11,500	1,039.99
106	REAR COURT	11,600	1,048.99
107	STAIRS	11,700	1,057.99
108	LOBBY	11,800	1,066.99
109	REAR COURT	11,900	1,075.99
110	STAIRS	12,000	1,084.99
111	LOBBY	12,100	1,093.99
112	REAR COURT	12,200	1,102.99
113	STAIRS	12,300	1,111.99
114	LOBBY	12,400	1,120.99
115	REAR COURT	12,500	1,129.99
116	STAIRS	12,600	1,138.99
117	LOBBY	12,700	1,147.99
118	REAR COURT	12,800	1,156.99
119	STAIRS	12,900	1,165.99
120	LOBBY	13,000	1,174.99
121	REAR COURT	13,100	1,183.99
122	STAIRS	13,200	1,192.99
123	LOBBY	13,300	1,201.99
124	REAR COURT	13,400	1,210.99
125	STAIRS	13,500	1,219.99
126	LOBBY	13,600	1,228.99
127	REAR COURT	13,700	1,237.99
128	STAIRS	13,800	1,246.99
129	LOBBY	13,900	1,255.99
130	REAR COURT	14,000	1,264.99
131	STAIRS	14,100	1,273.99
132	LOBBY	14,200	1,282.99
133	REAR COURT	14,300	1,291.99
134	STAIRS	14,400	1,300.99
135	LOBBY	14,500	1,309.99
136	REAR COURT	14,600	1,318.99
137	STAIRS	14,700	1,327.99
138	LOBBY	14,800	1,336.99
139	REAR COURT	14,900	1,345.99
140	STAIRS	15,000	1,354.99
141	LOBBY	15,100	1,363.99
142	REAR COURT	15,200	1,372.99
143	STAIRS	15,300	1,381.99
144	LOBBY	15,400	1,390.99
145	REAR COURT	15,500	1,399.99
146	STAIRS	15,600	1,408.99
147	LOBBY	15,700	1,417.99
148	REAR COURT	15,800	1,426.99
149	STAIRS	15,900	1,435.99
150	LOBBY	16,000	1,444.99
151	REAR COURT	16,100	1,453.99
152	STAIRS	16,200	1,462.99
153	LOBBY	16,300	1,471.99
154	REAR COURT	16,400	1,480.99
155	STAIRS	16,500	1,489.99
156	LOBBY	16,600	1,498.99
157	REAR COURT	16,700	1,507.99
158	STAIRS	16,800	1,516.99
159	LOBBY	16,900	1,525.99
160	REAR COURT	17,000	1,534.99
161	STAIRS	17,100	1,543.99
162	LOBBY	17,200	1,552.99
163	REAR COURT	17,300	1,561.99
164	STAIRS	17,400	1,570.99
165	LOBBY	17,500	1,579.99
166	REAR COURT	17,600	1,588.99
167	STAIRS	17,700	1,597.99
168	LOBBY	17,800	1,606.99
169	REAR COURT	17,900	1,615.99
170	STAIRS	18,000	1,624.99
171	LOBBY	18,100	1,633.99
172	REAR COURT	18,200	1,642.99
173	STAIRS	18,300	1,651.99
174	LOBBY	18,400	1,660.99
175	REAR COURT	18,500	1,669.99
176	STAIRS	18,600	1,678.99
177	LOBBY	18,700	1,687.99
178	REAR COURT	18,800	1,696.99
179	STAIRS	18,900	1,705.99
180	LOBBY	19,000	1,714.99
181	REAR COURT	19,100	1,723.99
182	STAIRS	19,200	1,732.99
183	LOBBY	19,300	1,741.99
184	REAR COURT	19,400	1,750.99
185	STAIRS	19,500	1,759.99
186	LOBBY	19,600	1,768.99
187	REAR COURT	19,700	1,777.99
188	STAIRS	19,800	1,786.99
189	LOBBY	19,900	1,795.99
190	REAR COURT	20,000	1,804.99
191	STAIRS	20,100	1,813.99
192	LOBBY	20,200	1,822.99
193	REAR COURT	20,300	1,831.99
194	STAIRS	20,400	1,840.99
195	LOBBY	20,500	1,849.99
196	REAR COURT	20,600	1,858.99
197	STAIRS	20,700	1,867.99
198	LOBBY	20,800	1,876.99
199	REAR COURT	20,900	1,885.99
200	STAIRS	21,000	1,894.99
201	LOBBY	21,100	1,903.99
202	REAR COURT	21,200	1,912.99
203	STAIRS	21,300	1,921.99
204	LOBBY	21,400	1,930.99
205	REAR COURT	21,500	1,939.99
206	STAIRS	21,600	1,948.99
207	LOBBY	21,700	1,957.99
208	REAR COURT	21,800	1,966.99
209	STAIRS	21,900	1,975.99
210	LOBBY	22,000	1,984.99
211	REAR COURT	22,100	1,993.99
212	STAIRS	22,200	2,002.99
213	LOBBY	22,300	2,011.99
214	REAR COURT	22,400	2,020.99
215	STAIRS	22,500	2,029.99
216	LOBBY	22,600	2,038.99
217	REAR COURT	22,700	2,047.99
218	STAIRS	22,800	2,056.99
219	LOBBY	22,900	2,065.99
220	REAR COURT	23,000	2,074.99
221	STAIRS	23,100	2,083.99
222	LOBBY	23,200	2,092.99
223	REAR COURT	23,300	2,101.99
224	STAIRS	23,400	2,110.99
225	LOBBY	23,500	2,119.99
226	REAR COURT	23,600	2,128.99
227	STAIRS	23,700	2,137.99
228	LOBBY	23,800	2,146.99
229	REAR COURT	23,900	2,155.99
230	STAIRS	24,000	2,164.99
231	LOBBY	24,100	2,173.99
232	REAR COURT	24,200	2,182.99
233	STAIRS	24,300	2,191.99
234	LOBBY	24,400	2,200.99
235	REAR COURT	24,500	2,209.99
236	STAIRS	24,600	2,218.99
237	LOBBY	24,700	2,227.99
238	REAR COURT	24,800	2,236.99
239	STAIRS	24,900	2,245.99
240	LOBBY	25,000	2,254.99
241	REAR COURT	25,100	2,263.99
242	STAIRS	25,200	2,272.99
243	LOBBY	25,300	2,281.99
244	REAR COURT	25,400	2,290.99
245	STAIRS	25,500	2,299.99
246	LOBBY	25,600	2,308.99
247	REAR COURT	25,700	2,317.99
248	STAIRS	25,800	2,326.99
249	LOBBY	25,900	2,335.99
250	REAR COURT	26,000	2,344.99
251	STAIRS	26,100	2,353.99
252	LOBBY	26,200	2,362.99
253	REAR COURT	26,300	2,371.99
254	STAIRS	26,400	2,380.99
255	LOBBY	26,500	2,389.99
256	REAR COURT	26,600	2,398.99
257	STAIRS	26,700	2,407.99
258	LOBBY	26,800	2,416.99
259	REAR COURT	26,900	2,425.99
260	STAIRS	27,000	2,434.99
261	LOBBY	27,100	2,443.99
262	REAR COURT	27,200	2,452.99
263	STAIRS	27,300	2,461.99
264	LOBBY	27,400	2,470.99
265	REAR COURT	27,500	2,479.99
266	STAIRS	27,600	2,488.99
267	LOBBY	27,700	2,497.99
268	REAR COURT	27,800	2,506.99
269	STAIRS	27,900	2,515.99
270	LOBBY	28,000	2,524.99
271	REAR COURT	28,100	2,533.99
272	STAIRS	28,200	2,542.99
273	LOBBY	28,300	2,551.99
274	REAR COURT	28,400	2,560.99
275	STAIRS	28,500	2,569.99
276	LOBBY	28,600	2,578.99
277	REAR COURT	28,700	2,587.99
278	STAIRS	28,800	2,596.99
279	LOBBY	28,900	2,605.99
280	REAR COURT	29,000	2,614.99
281	STAIRS	29,100	2,623.99
282	LOBBY		

CONTENTS OF SHEETS

TYPICAL FLOOR PLAN (PT) 1-107 + 200 TO 7TH FLOOR
 2ND FLOOR PLAN AND 3RD FLOOR PLAN TYPICAL FLOOR PLAN
 AREA-100 SQUARE AREA CALCULATION SUMMARY
 SECTION 1-4 & 5 & 6, ETC.

STAMP OF APPROVAL OF PLAN

I have examined the plan and find it correct in accordance with the provisions of the Building Act, 1973 and the Building Regulations, 1973.
 I hereby certify that the plan is correct in accordance with the provisions of the Building Act, 1973 and the Building Regulations, 1973.
 [Signature]
 [Stamp]
 The City of Thane

REMARKS

1. The proposed building is within the zone of the city of Thane and is subject to the provisions of the Building Act, 1973 and the Building Regulations, 1973.
 2. The proposed building is within the zone of the city of Thane and is subject to the provisions of the Building Act, 1973 and the Building Regulations, 1973.
 3. The proposed building is within the zone of the city of Thane and is subject to the provisions of the Building Act, 1973 and the Building Regulations, 1973.



STAMP OF RECEIPT OF PLAN

DESCRIPTION

PROPOSED BUILDING ON PLOT BEARING - C.T.S NO. 415, TRAND V AT FARDIMANGA, THANE.

NAME & SIGNATURE OF OWNERS/POA

FOR: [Signature]
 HSH DEVELOPERS
 ARCHITECT

10 FOLDS

ARCHITECTS & CONSULTANTS
 6/10, Sea View, The Cliffside, Thane
 Thane (W) 401 101, Tel. 022-2556621, 21-24
 Fax: 022-2556621

NO.	DATE	REVISION
001		
002		
003		

CONTENTS AND CALCULATION OF TYPICAL FLOOR PLAN

FLOOR	N. WIND AREA	REAR AREA	TOTAL AREA
1ST FLOOR	12.21 SQ.M	11.26 SQ.M	23.47 SQ.M
2ND FLOOR	12.21 SQ.M	11.26 SQ.M	23.47 SQ.M
3RD FLOOR	12.21 SQ.M	11.26 SQ.M	23.47 SQ.M
4TH FLOOR	12.21 SQ.M	11.26 SQ.M	23.47 SQ.M
5TH FLOOR	12.21 SQ.M	11.26 SQ.M	23.47 SQ.M
6TH FLOOR	12.21 SQ.M	11.26 SQ.M	23.47 SQ.M
7TH FLOOR	12.21 SQ.M	11.26 SQ.M	23.47 SQ.M
TOTAL AREA	85.47 SQ.M	77.38 SQ.M	162.85 SQ.M

STAIRCASE AREA SUMMARY

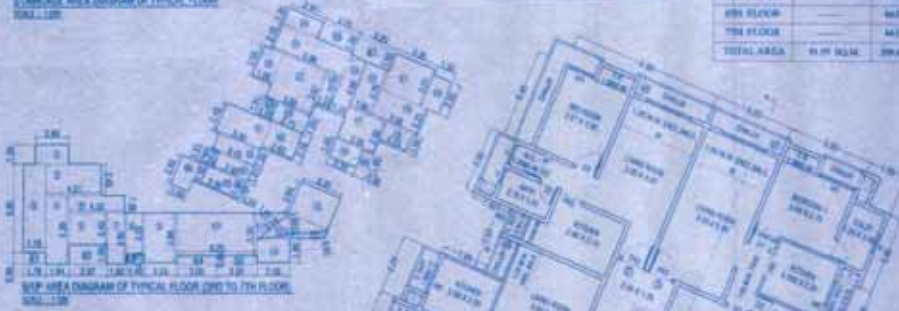
FLOOR	N. WIND AREA	REAR AREA	TOTAL AREA
GROUND FLOOR	3.12 SQ.M	3.12 SQ.M	6.24 SQ.M
1ST FLOOR	3.12 SQ.M	3.12 SQ.M	6.24 SQ.M
2ND FLOOR	3.12 SQ.M	3.12 SQ.M	6.24 SQ.M
3RD FLOOR	3.12 SQ.M	3.12 SQ.M	6.24 SQ.M
4TH FLOOR	3.12 SQ.M	3.12 SQ.M	6.24 SQ.M
5TH FLOOR	3.12 SQ.M	3.12 SQ.M	6.24 SQ.M
6TH FLOOR	3.12 SQ.M	3.12 SQ.M	6.24 SQ.M
7TH FLOOR	3.12 SQ.M	3.12 SQ.M	6.24 SQ.M
TOTAL AREA	21.36 SQ.M	21.36 SQ.M	42.72 SQ.M

FLOOR AREA SUMMARY

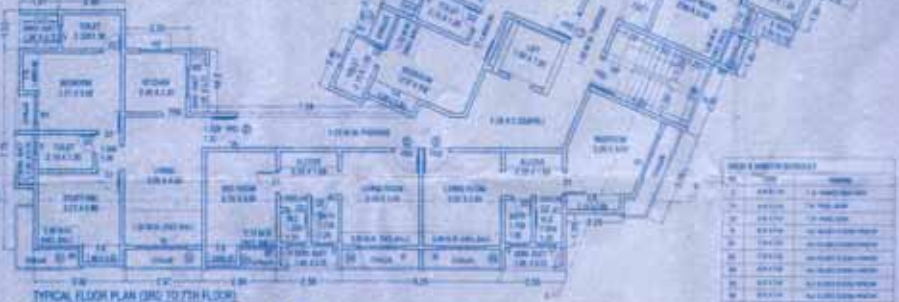
FLOOR	N. WIND AREA	REAR AREA	TOTAL AREA
GROUND FLOOR	15.33 SQ.M	15.33 SQ.M	30.66 SQ.M
1ST FLOOR	15.33 SQ.M	15.33 SQ.M	30.66 SQ.M
2ND FLOOR	15.33 SQ.M	15.33 SQ.M	30.66 SQ.M
3RD FLOOR	15.33 SQ.M	15.33 SQ.M	30.66 SQ.M
4TH FLOOR	15.33 SQ.M	15.33 SQ.M	30.66 SQ.M
5TH FLOOR	15.33 SQ.M	15.33 SQ.M	30.66 SQ.M
6TH FLOOR	15.33 SQ.M	15.33 SQ.M	30.66 SQ.M
7TH FLOOR	15.33 SQ.M	15.33 SQ.M	30.66 SQ.M
TOTAL AREA	107.34 SQ.M	107.34 SQ.M	214.68 SQ.M



STAIRCASE AREA DIAGRAM OF TYPICAL FLOOR



TYPICAL FLOOR PLAN (2ND TO 7TH FLOOR)



TYPICAL FLOOR PLAN (2ND FLOOR)



TYPICAL FLOOR PLAN (3RD FLOOR)



TYPICAL FLOOR PLAN (4TH FLOOR)

LIST OF CALCULATION OF TYPICAL FLOOR PLAN

NO.	AREA	UNIT	TOTAL AREA
1	12.21	SQ.M	12.21
2	11.26	SQ.M	11.26
3	12.21	SQ.M	12.21
4	11.26	SQ.M	11.26
5	12.21	SQ.M	12.21
6	11.26	SQ.M	11.26
7	12.21	SQ.M	12.21
8	11.26	SQ.M	11.26
9	12.21	SQ.M	12.21
10	11.26	SQ.M	11.26
11	12.21	SQ.M	12.21
12	11.26	SQ.M	11.26
13	12.21	SQ.M	12.21
14	11.26	SQ.M	11.26
15	12.21	SQ.M	12.21
16	11.26	SQ.M	11.26
17	12.21	SQ.M	12.21
18	11.26	SQ.M	11.26
19	12.21	SQ.M	12.21
20	11.26	SQ.M	11.26
21	12.21	SQ.M	12.21
22	11.26	SQ.M	11.26
23	12.21	SQ.M	12.21
24	11.26	SQ.M	11.26
25	12.21	SQ.M	12.21
26	11.26	SQ.M	11.26
27	12.21	SQ.M	12.21
28	11.26	SQ.M	11.26
29	12.21	SQ.M	12.21
30	11.26	SQ.M	11.26
31	12.21	SQ.M	12.21
32	11.26	SQ.M	11.26
33	12.21	SQ.M	12.21
34	11.26	SQ.M	11.26
35	12.21	SQ.M	12.21
36	11.26	SQ.M	11.26
37	12.21	SQ.M	12.21
38	11.26	SQ.M	11.26
39	12.21	SQ.M	12.21
40	11.26	SQ.M	11.26
41	12.21	SQ.M	12.21
42	11.26	SQ.M	11.26
43	12.21	SQ.M	12.21
44	11.26	SQ.M	11.26
45	12.21	SQ.M	12.21
46	11.26	SQ.M	11.26
47	12.21	SQ.M	12.21
48	11.26	SQ.M	11.26
49	12.21	SQ.M	12.21
50	11.26	SQ.M	11.26
51	12.21	SQ.M	12.21
52	11.26	SQ.M	11.26
53	12.21	SQ.M	12.21
54	11.26	SQ.M	11.26
55	12.21	SQ.M	12.21
56	11.26	SQ.M	11.26
57	12.21	SQ.M	12.21
58	11.26	SQ.M	11.26
59	12.21	SQ.M	12.21
60	11.26	SQ.M	11.26
61	12.21	SQ.M	12.21
62	11.26	SQ.M	11.26
63	12.21	SQ.M	12.21
64	11.26	SQ.M	11.26
65	12.21	SQ.M	12.21
66	11.26	SQ.M	11.26
67	12.21	SQ.M	12.21
68	11.26	SQ.M	11.26
69	12.21	SQ.M	12.21
70	11.26	SQ.M	11.26
71	12.21	SQ.M	12.21
72	11.26	SQ.M	11.26
73	12.21	SQ.M	12.21
74	11.26	SQ.M	11.26
75	12.21	SQ.M	12.21
76	11.26	SQ.M	11.26
77	12.21	SQ.M	12.21
78	11.26	SQ.M	11.26
79	12.21	SQ.M	12.21
80	11.26	SQ.M	11.26
81	12.21	SQ.M	12.21
82	11.26	SQ.M	11.26
83	12.21	SQ.M	12.21
84	11.26	SQ.M	11.26
85	12.21	SQ.M	12.21
86	11.26	SQ.M	11.26
87	12.21	SQ.M	12.21
88	11.26	SQ.M	11.26
89	12.21	SQ.M	12.21
90	11.26	SQ.M	11.26
91	12.21	SQ.M	12.21
92	11.26	SQ.M	11.26
93	12.21	SQ.M	12.21
94	11.26	SQ.M	11.26
95	12.21	SQ.M	12.21
96	11.26	SQ.M	11.26
97	12.21	SQ.M	12.21
98	11.26	SQ.M	11.26
99	12.21	SQ.M	12.21
100	11.26	SQ.M	11.26

LIST OF CALCULATION OF TYPICAL FLOOR PLAN

NO.	AREA	UNIT	TOTAL AREA
1	12.21	SQ.M	12.21
2	11.26	SQ.M	11.26
3	12.21	SQ.M	12.21
4	11.26	SQ.M	11.26
5	12.21	SQ.M	12.21
6	11.26	SQ.M	11.26
7	12.21	SQ.M	12.21
8	11.26	SQ.M	11.26
9	12.21	SQ.M	12.21
10	11.26	SQ.M	11.26
11	12.21	SQ.M	12.21
12	11.26	SQ.M	11.26
13	12.21	SQ.M	12.21
14	11.26	SQ.M	11.26
15	12.21	SQ.M	12.21
16	11.26	SQ.M	11.26
17	12.21	SQ.M	12.21
18	11.26	SQ.M	11.26
19	12.21	SQ.M	12.21
20	11.26	SQ.M	11.26
21	12.21	SQ.M	12.21
22	11.26	SQ.M	11.26
23	12.21	SQ.M	12.21
24	11.26	SQ.M	11.26
25	12.21	SQ.M	12.21
26	11.26	SQ.M	11.26
27	12.21	SQ.M	12.21
28	11.26	SQ.M	11.26
29	12.21	SQ.M	12.21
30	11.26	SQ.M	11.26
31	12.21	SQ.M	12.21
32	11.26	SQ.M	11.26
33	12.21	SQ.M	12.21
34	11.26	SQ.M	11.26
35	12.21	SQ.M	12.21
36	11.26	SQ.M	11.26
37	12.21	SQ.M	12.21
38	11.26	SQ.M	11.26
39	12.21	SQ.M	12.21
40	11.26	SQ.M	11.26
41	12.21	SQ.M	12.21
42	11.26	SQ.M	11.26
43	12.21	SQ.M	12.21
44	11.26	SQ.M	11.26
45	12.21	SQ.M	12.21
46	11.26	SQ.M	11.26
47	12.21	SQ.M	12.21
48	11.26	SQ.M	11.26
49	12.21	SQ.M	12.21
50	11.26	SQ.M	11.26
51	12.21	SQ.M	12.21
52	11.26	SQ.M	11.26
53	12.21	SQ.M	12.21
54	11.26	SQ.M	11.26
55	12.21	SQ.M	12.21
56	11.26	SQ.M	11.26
57	12.21	SQ.M	12.21
58	11.26	SQ.M	11.26
59	12.21	SQ.M	12.21
60	11.26	SQ.M	11.26
61	12.21	SQ.M	12.21
62	11.26	SQ.M	11.26
63	12.21	SQ.M	12.21
64	11.26	SQ.M	11.26
65	12.21	SQ.M	12.21
66	11.26	SQ.M	11.26
67	12.21	SQ.M	12.21
68	11.26	SQ.M	11.26
69	12.21	SQ.M	12.21
70	11.26	SQ.M	11.26
71	12.21	SQ.M	12.21
72	11.26	SQ.M	11.26
73	12.21	SQ.M	12.21
74	11.26	SQ.M	11.26
75	12.21	SQ.M	12.21
76	11.26	SQ.M	11.26
77	12.21	SQ.M	12.21
78	11.26	SQ.M	11.26
79	12.21	SQ.M	12.21
80	11.26	SQ.M	11.26
81	12.21	SQ.M	12.21
82	11.26	SQ.M	11.26
83	12.21	SQ.M	12.21
84	11.26	SQ.M	11.26
85	12.21	SQ.M	12.21
86	11.26	SQ.M	11.26
87	12.21	SQ.M	12.21
88	11.26	SQ.M	11.26
89	12.21	SQ.M	12.21
90	11.26	SQ.M	11.26
91	12.21	SQ.M	12.21
92	11.26	SQ.M	11.26
93	12.21		

