

TYPICAL FLR. PLAN 2ND TO 7TH, 9TH TO 13TH, 15TH TO 19TH, 21ST TO 25TH & 27TH FLR.(BLDG. S1 WING - A)
SCALE: 1:100



1ST FLR. PLAN (BLDG. S1 WING - A)
SCALE: 1:100

2ND TO 7TH FLR TO 13TH, 15TH TO 19TH, 21ST TO 25TH & 27TH FLR.

FLAT NO. 1

LOBBY	1.28 X 2.375	=	2.87
KIT	1.725 X 1.105	=	1.90
LIV/DIN	4.478 X 3.075	=	13.78
PASS	1.478 X 1.418	=	2.09
TOL	0.890 X 0.790	=	0.71
P.O.O.L	1.725 X 1.485	=	2.55
STUDY RM	3.528 X 3.440	=	11.47
BED RM	3.528 X 3.075	=	10.78
TOL	1.900 X 2.100	=	3.99
D	0.975 X 0.930	=	0.91
D1	0.900 X 0.930	=	0.84
D2	0.900 X 0.930	=	0.84
D3	0.900 X 0.930	=	0.84
D4	0.750 X 0.930 X 2	=	1.32
TOTAL	0.990 X 0.930	=	0.92

1ST TO 13TH, 15TH TO 19TH, 21ST TO 25TH & 27TH FLR.

FLAT NO. 2

LOBBY	1.28 X 2.375	=	2.87
KIT	1.725 X 1.105	=	1.90
LIV/DIN	4.478 X 3.075	=	13.78
PASS	1.478 X 1.418	=	2.09
TOL	0.890 X 0.790	=	0.71
P.O.O.L	1.725 X 1.485	=	2.55
STUDY RM	3.528 X 3.440	=	11.47
BED RM	3.528 X 3.075	=	10.78
TOL	1.900 X 2.100	=	3.99
D	0.975 X 0.930	=	0.91
D1	0.900 X 0.930	=	0.84
D2	0.900 X 0.930	=	0.84
D3	0.900 X 0.930	=	0.84
D4	0.750 X 0.930 X 2	=	1.32
TOTAL	0.990 X 0.930	=	0.92

2ND TO 27TH FLR.

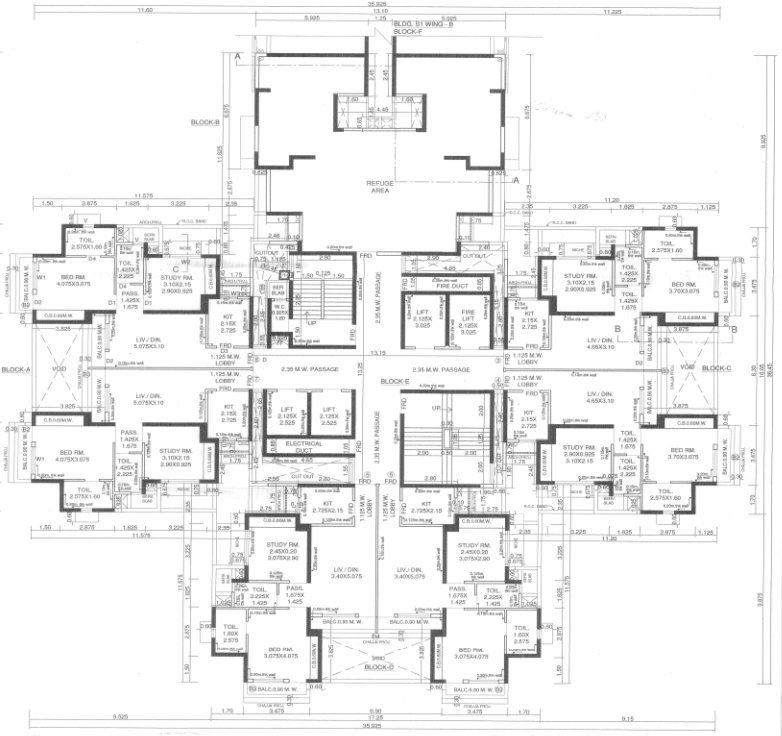
FLAT NO. 3.4

LOBBY	1.28 X 2.375	=	2.87
KIT	1.725 X 1.105	=	1.90
LIV/DIN	4.478 X 3.075	=	13.78
PASS	1.478 X 1.418	=	2.09
TOL	0.890 X 0.790	=	0.71
P.O.O.L	1.725 X 1.485	=	2.55
STUDY RM	3.528 X 3.440	=	11.47
BED RM	3.528 X 3.075	=	10.78
TOL	1.900 X 2.100	=	3.99
D	0.975 X 0.930	=	0.91
D1	0.900 X 0.930	=	0.84
D2	0.900 X 0.930	=	0.84
D3	0.900 X 0.930	=	0.84
D4	0.750 X 0.930 X 2	=	1.32
TOTAL	0.990 X 0.930	=	0.92

1ST TO 27TH FLR.

FLAT NO. 3.5

LOBBY	1.28 X 2.375	=	2.87
KIT	1.725 X 1.105	=	1.90
LIV/DIN	4.478 X 3.075	=	13.78
PASS	1.478 X 1.418	=	2.09
TOL	0.890 X 0.790	=	0.71
P.O.O.L	1.725 X 1.485	=	2.55
STUDY RM	3.528 X 3.440	=	11.47
BED RM	3.528 X 3.075	=	10.78
TOL	1.900 X 2.100	=	3.99
D	0.975 X 0.930	=	0.91
D1	0.900 X 0.930	=	0.84
D2	0.900 X 0.930	=	0.84
D3	0.900 X 0.930	=	0.84
D4	0.750 X 0.930 X 2	=	1.32
TOTAL	0.990 X 0.930	=	0.92



8TH, 14TH, 20TH & 26TH FLR.(BLDG. S1 WING - A)(REFUGE)
SCALE: 1:100

DATE & STAMP OF PREPARATION: 25/07/2024
DATE & STAMP OF APPROVAL: 25/07/2024
APPROVED BY: [Signature]
PROJECT: M/s SANVO RESORTS PVT. LTD.



REVISION	DESCRIPTION	DATE	SIGNATURE

CONTENTS OF SHEET
ALL INTERNAL WALLS IN RESIDENTIAL WING IS 0.15 M. THIN UNLESS OTHERWISE SPECIFY IN PROPOSED ROOM DRAWING IN RED
CARPET AREA

DESCRIPTION OF PROPOSAL & PROPERTY
PROPOSED SALE RESIDENTIAL BLDG. S1 WING A ON LAND BEARING S.NO. 94/D, 95/1, 95/2, 95/3, 95/4, 95/5, 97/1, 97/2, 98/5A, 98/5B, 98/5C, 98/5D & 98/5D AT VILLAGE KOLKHE TAL. PANVEL, DIST. RAJGAD.

NAME & SIGNATURE OF OWNERS
M/s SANVO RESORTS PVT. LTD.
[Signature]

DATE MONTH YEAR SIGNATURE NAME AND ADDRESS OF ARCHITECT
[Signature]
MATRIX
[Signature]
SCALE: 1:100