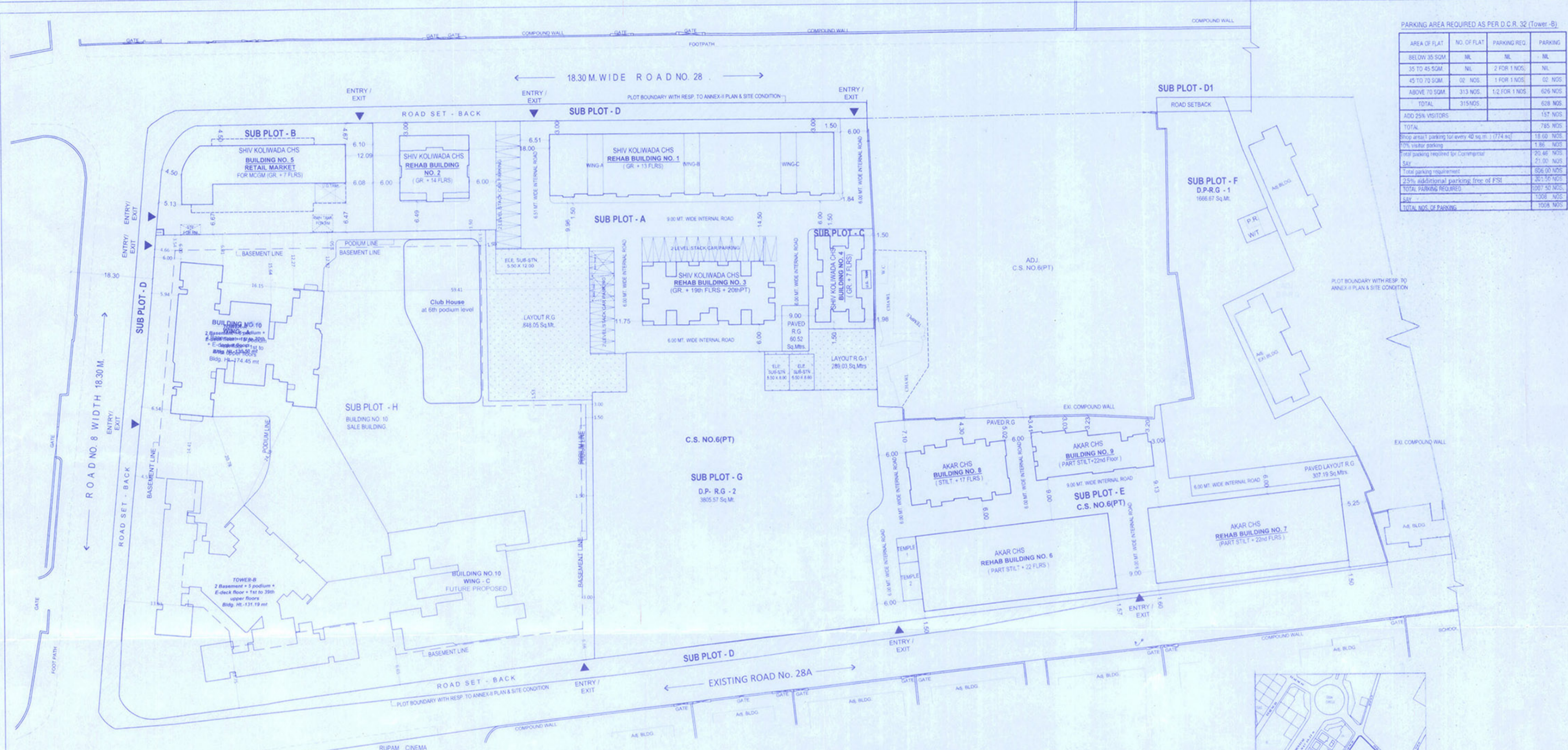


LAYOUT PLAN
SCALE 1:500



PARKING AREA REQUIRED AS PER D.C.R. 32 (Tower-B)

AREA OF FLAT	NO. OF FLAT	PARKING REQ.	PARKING
BELOW 35 SQM.	NIL	NIL	NIL
35 TO 45 SQM.	NIL	2 FOR 1 NOS.	NIL
45 TO 70 SQM.	02 NOS.	1 FOR 1 NOS.	02 NOS.
ABOVE 70 SQM.	313 NOS.	1/2 FOR 1 NOS.	626 NOS.
TOTAL	315 NOS.		628 NOS.
ADD 25% VISITORS			157 NOS.
TOTAL			785 NOS.
Shop area parking for every 40 sq.m. (1774 sq)			18.60 NOS.
10% visitor parking			1.86 NOS.
total parking required for Component			20.46 NOS.
SAY			21.00 NOS.
Total parking requirement			826.00 NOS.
2.5% additional parking free of FSI			201.50 NOS.
TOTAL PARKING REQUIRED			1027.50 NOS.
SAY			1008 NOS.
TOTAL NOS. OF PARKING			1008 NOS.

LAYOUT

S.No.	PARTICULARS	APPROVED LOI PARAMETERS				GRAND TOTAL
		SHV KOLIWADA NON SLUM	AKAR	NON SLUM	SUB TOTAL	
1	AREA OF PLOT	14121.00	11021.72	418.15	1949.03	13388.90
2	LESS AREA UNDER RESERVATION					
3	AREA OF PLOT					
4	D.P. SET BACK	1203.50	805.80			2009.30
5	D.P. (R.G.)		5450.58			5450.58
6	RETAIL MARKET (84.36 X 25 %)		7.03			7.03
7	M.C. AND LIBRARY (122.35 X 25%)		102.70			102.70
8	MUNICIPAL STAFF QUARTERS		45.50			45.50
9	TOTAL (1+2+3+4+5+6+7+8)	1203.50	6411.61	NIL	NIL	6411.61
10	PLANT AREA FOR REDUCTION LESS 5% R.G. FOR 33(7) & 32					
11	REPAIRATION BUA AS PER APPROVED LOI 4-04-2000					
12	REPAIRATION BUA AS PER APPROVED LOI 4-04-2000					
13	REPAIRATION BUA AS PER APPROVED LOI 4-04-2000					
14	REPAIRATION BUA AS PER APPROVED LOI 4-04-2000					
15	REPAIRATION BUA AS PER APPROVED LOI 4-04-2000					
16	REPAIRATION BUA AS PER APPROVED LOI 4-04-2000					
17	REPAIRATION BUA AS PER APPROVED LOI 4-04-2000					
18	REPAIRATION BUA AS PER APPROVED LOI 4-04-2000					
19	REPAIRATION BUA AS PER APPROVED LOI 4-04-2000					
20	REPAIRATION BUA AS PER APPROVED LOI 4-04-2000					
21	REPAIRATION BUA AS PER APPROVED LOI 4-04-2000					
22	REPAIRATION BUA AS PER APPROVED LOI 4-04-2000					
23	REPAIRATION BUA AS PER APPROVED LOI 4-04-2000					
24	REPAIRATION BUA AS PER APPROVED LOI 4-04-2000					
25	REPAIRATION BUA AS PER APPROVED LOI 4-04-2000					
26	REPAIRATION BUA AS PER APPROVED LOI 4-04-2000					
27	REPAIRATION BUA AS PER APPROVED LOI 4-04-2000					
28	REPAIRATION BUA AS PER APPROVED LOI 4-04-2000					
29	REPAIRATION BUA AS PER APPROVED LOI 4-04-2000					
30	REPAIRATION BUA AS PER APPROVED LOI 4-04-2000					
31	REPAIRATION BUA AS PER APPROVED LOI 4-04-2000					
32	REPAIRATION BUA AS PER APPROVED LOI 4-04-2000					
33	REPAIRATION BUA AS PER APPROVED LOI 4-04-2000					
34	REPAIRATION BUA AS PER APPROVED LOI 4-04-2000					
35	REPAIRATION BUA AS PER APPROVED LOI 4-04-2000					
36	REPAIRATION BUA AS PER APPROVED LOI 4-04-2000					
37	REPAIRATION BUA AS PER APPROVED LOI 4-04-2000					
38	REPAIRATION BUA AS PER APPROVED LOI 4-04-2000					
39	REPAIRATION BUA AS PER APPROVED LOI 4-04-2000					
40	REPAIRATION BUA AS PER APPROVED LOI 4-04-2000					
41	REPAIRATION BUA AS PER APPROVED LOI 4-04-2000					
42	REPAIRATION BUA AS PER APPROVED LOI 4-04-2000					
43	REPAIRATION BUA AS PER APPROVED LOI 4-04-2000					
44	REPAIRATION BUA AS PER APPROVED LOI 4-04-2000					
45	REPAIRATION BUA AS PER APPROVED LOI 4-04-2000					
46	REPAIRATION BUA AS PER APPROVED LOI 4-04-2000					
47	REPAIRATION BUA AS PER APPROVED LOI 4-04-2000					
48	REPAIRATION BUA AS PER APPROVED LOI 4-04-2000					
49	REPAIRATION BUA AS PER APPROVED LOI 4-04-2000					
50	REPAIRATION BUA AS PER APPROVED LOI 4-04-2000					
51	REPAIRATION BUA AS PER APPROVED LOI 4-04-2000					
52	REPAIRATION BUA AS PER APPROVED LOI 4-04-2000					
53	REPAIRATION BUA AS PER APPROVED LOI 4-04-2000					
54	REPAIRATION BUA AS PER APPROVED LOI 4-04-2000					
55	REPAIRATION BUA AS PER APPROVED LOI 4-04-2000					
56	REPAIRATION BUA AS PER APPROVED LOI 4-04-2000					
57	REPAIRATION BUA AS PER APPROVED LOI 4-04-2000					
58	REPAIRATION BUA AS PER APPROVED LOI 4-04-2000					
59	REPAIRATION BUA AS PER APPROVED LOI 4-04-2000					
60	REPAIRATION BUA AS PER APPROVED LOI 4-04-2000					
61	REPAIRATION BUA AS PER APPROVED LOI 4-04-2000					
62	REPAIRATION BUA AS PER APPROVED LOI 4-04-2000					
63	REPAIRATION BUA AS PER APPROVED LOI 4-04-2000					
64	REPAIRATION BUA AS PER APPROVED LOI 4-04-2000					
65	REPAIRATION BUA AS PER APPROVED LOI 4-04-2000					
66	REPAIRATION BUA AS PER APPROVED LOI 4-04-2000					
67	REPAIRATION BUA AS PER APPROVED LOI 4-04-2000					
68	REPAIRATION BUA AS PER APPROVED LOI 4-04-2000					
69	REPAIRATION BUA AS PER APPROVED LOI 4-04-2000					
70	REPAIRATION BUA AS PER APPROVED LOI 4-04-2000					
71	REPAIRATION BUA AS PER APPROVED LOI 4-04-2000					
72	REPAIRATION BUA AS PER APPROVED LOI 4-04-2000					
73	REPAIRATION BUA AS PER APPROVED LOI 4-04-2000					
74	REPAIRATION BUA AS PER APPROVED LOI 4-04-2000					
75	REPAIRATION BUA AS PER APPROVED LOI 4-04-2000					
76	REPAIRATION BUA AS PER APPROVED LOI 4-04-2000					
77	REPAIRATION BUA AS PER APPROVED LOI 4-04-2000					
78	REPAIRATION BUA AS PER APPROVED LOI 4-04-2000					
79	REPAIRATION BUA AS PER APPROVED LOI 4-04-2000					
80	REPAIRATION BUA AS PER APPROVED LOI 4-04-2000					
81	REPAIRATION BUA AS PER APPROVED LOI 4-04-2000					
82	REPAIRATION BUA AS PER APPROVED LOI 4-04-2000					
83	REPAIRATION BUA AS PER APPROVED LOI 4-04-2000					
84	REPAIRATION BUA AS PER APPROVED LOI 4-04-2000					
85	REPAIRATION BUA AS PER APPROVED LOI 4-04-2000					
86	REPAIRATION BUA AS PER APPROVED LOI 4-04-2000					
87	REPAIRATION BUA AS PER APPROVED LOI 4-04-2000					
88	REPAIRATION BUA AS PER APPROVED LOI 4-04-2000					
89	REPAIRATION BUA AS PER APPROVED LOI 4-04-2000					
90	REPAIRATION BUA AS PER APPROVED LOI 4-04-2000					
91	REPAIRATION BUA AS PER APPROVED LOI 4-04-2000					
92	REPAIRATION BUA AS PER APPROVED LOI 4-04-2000					
93	REPAIRATION BUA AS PER APPROVED LOI 4-04-2000					
94	REPAIRATION BUA AS PER APPROVED LOI 4-04-2000					
95	REPAIRATION BUA AS PER APPROVED LOI 4-04-2000					
96	REPAIRATION BUA AS PER APPROVED LOI 4-04-2000					
97	REPAIRATION BUA AS PER APPROVED LOI 4-04-2000					
98	REPAIRATION BUA AS PER APPROVED LOI 4-04-2000					
99	REPAIRATION BUA AS PER APPROVED LOI 4-04-2000					
100	REPAIRATION BUA AS PER APPROVED LOI 4-04-2000					

BUILT UP AREA STATEMENT OF SALE BUILDING - TOWER 'A' & 'B'

TOWER	REFUGE AREA PROVIDED	TOTAL BUILT UP AREA (SALE)			Service Core Area	Construction Area	TOTAL BUILT UP AREA (REHAB)
		Sale BUA (a)	Excess Refuge area (b)	Excess Area counted in FSI (c)			
TOWER A	578.57	16834.72	5.08	---	16839.80	4515.30	10254.46
TOWER B	916.22	26805.93	5.98	890.94	27706.85	8406.91	112938.68
TOTAL BUA (A1)	1494.79	43644.65	11.06	890.94	44546.65	12922.21	215479.14



PROFORMA 'B'
CONTENTS OF SHEET

DESCRIPTION OF PROPOSAL & PROPERTY
PROPOSED SALE BUILDING ON MUNICIPAL PROPERTY BEARING C. S. NO. 6 (PT) OF SIION DIVISION, SCHEME NO. 6, SITUATED AT ROAD NO.28A FOR SHIVKOLIWADA CHS UNDER DCR33(7) WITH SLUM REHABILITATION SCHEME OF AKAR CHS LTD. UNDER DCR33(10) IN F/NORTH WARD, MUMBAI - 400 022.

STAMP OF DATE OF RECEIPT OF PLANS
Stamp: Approved Subject to the condition mentioned in this office permission letter no. SPA/ENG/3119/EN/ML/AP dated 18/12/2018

STAMP OF DATE OF APPROVAL OF PLANS
Stamp: 40 JAN 2018

NAME OF OWNER
ARUN GUPTA / 247 / LS

PILOT CONSTRUCTION PVT.LTD.
DRAWN BY: SKYLINE
CHECKED BY: INFRABUILT CONSULTANTS PVT.LTD.
SCALE: 1:100

NAME OF LICENSED SURVEYOR
ARUN GUPTA / 247 / LS
SKYLINE INFRABUILT CONSULTANTS PVT.LTD.
Shop No.3, sarovar, vasant complex, Mahavir Nagar, Kandivali (West), Mumbai 400 067.
Email: skylineinfra786@gmail.com