



**SLUM REHABILITATION AUTHORITY**

No. SRA/ENG/3119/FN/ML/AP

Date:

**11 7 AUG 2020**

To,  
Shri. Arun Gurav  
M/s. Skyline Infrabuilt Consultants Pvt. Ltd.  
Shop No 3, Sarovar,  
Vasant Complex, Mahavir Nagar,  
Kandivali (W). Mumbai - 400067

Sub :- Approval of **Amendment in plans for Sale Building No. 10 wing B & C** in proposed S.R. Scheme in amalgamation/joint development of redevelopment scheme under DCPR 33(7) of "Shiv Koliwada CHS Ltd." On land bearing C.S. No 6(part) of Sion Division with slum scheme of "Akar CHS Lts" under DCPR 33(10) on contiguous land bearing C.S. no 6(part) of Sion division in F/North ward.

Sir,

With reference to above, the amended plans submitted by you on 10/08/2020 for wing B & C in the above mentioned SR Scheme are hereby approved by this office subject to following conditions:-

1. That condition of LOI issued u/No SRA/ENG/2532/FN/ML/LOI dated 30/05/2014 and 18/11/2016 and 13/08/2019 shall be complied with.
2. That the conditions of IOA issued u/No. SRA/ENG/3136/FN/ML/AP Dated: 18/07/2014, 28/04/2016, 10/01/2018, 07/03/2018, 31/08/2019, 30/11/2019 & 18/12/2019 shall be complied with.
3. That the structural design and calculations shall be submitted before asking of plinth C.C. to Wing C building u/r.

One set of plans is returned herewith in token of approval.

Yours faithfully,


Sd/-

Executive Engineer  
Slum Rehabilitation Authority

Copy to :-

- 1) Developer M/s. Pilot Constructions Pvt. Ltd.

0505 JUA 7 11

  
19/08/2010

Executive Engineer  
Slum Rehabilitation Authority



**BUILT UP AREA FOR SALE WING 'A', 'W', 'C' SALE BUILDING 3**

Bldg Name & No.	Floor	No. of Commercial Units	No. of Residential Units	No. of Office Units	No. of Other Units	TOTAL NUMBER	Sq. Meter	Sq. Feet
WING 'A'	Floor 01 to 05	2083.17	183.48	14875.30	45.72	0.00	4191.30	15018.21
WING 'W'	Floor 01 to 05	1695.58	167.22	2784.30	0.00	0.00	1628.42	27341.37
WING 'C'	Floor 01 to 05	2388.00	427.84	1903.45	115.75	0.00	1623.59	15548.14
Other Building Area 1 & 2		0.00	0.00	97.84	0.00	0.00	0.00	97.84
<b>TOTAL</b>		<b>12166.75</b>	<b>3379.54</b>	<b>41994.05</b>	<b>168.47</b>	<b>0.00</b>	<b>36747.81</b>	<b>127883.20</b>

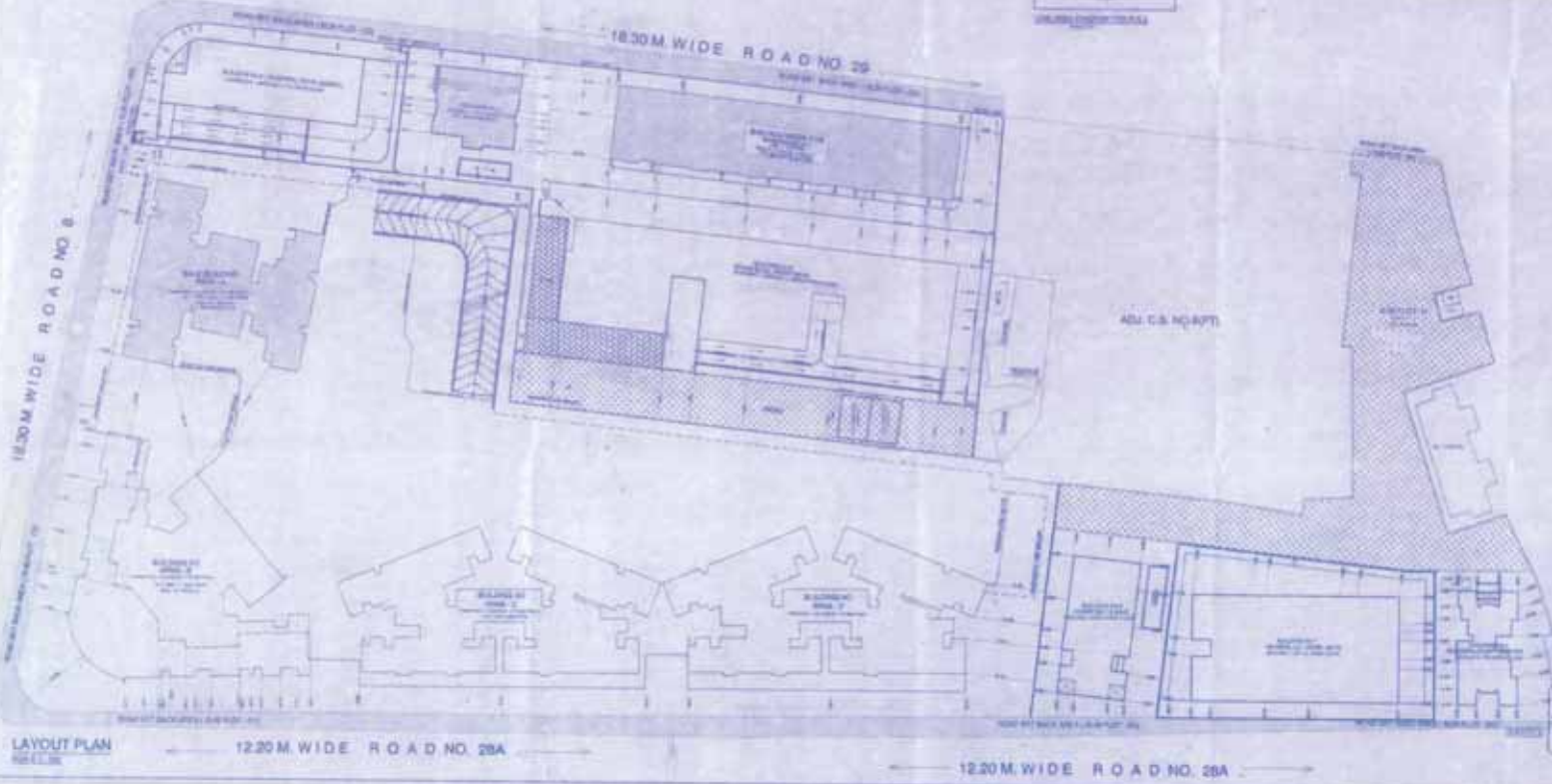
**TENEMENT AREA STATEMENT FOR SALE WING 'A', 'W', 'C'**

Building Name & No.	Floor	Sale Commercial Unit	Sale Residential Unit	Total No. of Tenant
WING 'A'	Floor 01 to 05	0	111	111
WING 'W'	Floor 01 to 05	10	223	233
WING 'C'	Floor 01 to 05	18	206	224
<b>TOTAL</b>		<b>28</b>	<b>540</b>	<b>568</b>



**PROFORMA 'A'**

Sl. No.	Particulars	Area under P.O.		Area Util.		Area	Area
		Area	Area	Area	Area		
1	Plot Area	2150	2150	2150	2150	2150	2150
2	Area under P.O.	2150	2150	2150	2150	2150	2150
3	Area under P.O.	2150	2150	2150	2150	2150	2150
4	Area under P.O.	2150	2150	2150	2150	2150	2150
5	Area under P.O.	2150	2150	2150	2150	2150	2150
6	Area under P.O.	2150	2150	2150	2150	2150	2150
7	Area under P.O.	2150	2150	2150	2150	2150	2150
8	Area under P.O.	2150	2150	2150	2150	2150	2150
9	Area under P.O.	2150	2150	2150	2150	2150	2150
10	Area under P.O.	2150	2150	2150	2150	2150	2150
11	Area under P.O.	2150	2150	2150	2150	2150	2150
12	Area under P.O.	2150	2150	2150	2150	2150	2150
13	Area under P.O.	2150	2150	2150	2150	2150	2150
14	Area under P.O.	2150	2150	2150	2150	2150	2150
15	Area under P.O.	2150	2150	2150	2150	2150	2150
16	Area under P.O.	2150	2150	2150	2150	2150	2150
17	Area under P.O.	2150	2150	2150	2150	2150	2150
18	Area under P.O.	2150	2150	2150	2150	2150	2150
19	Area under P.O.	2150	2150	2150	2150	2150	2150
20	Area under P.O.	2150	2150	2150	2150	2150	2150
21	Area under P.O.	2150	2150	2150	2150	2150	2150
22	Area under P.O.	2150	2150	2150	2150	2150	2150
23	Area under P.O.	2150	2150	2150	2150	2150	2150
24	Area under P.O.	2150	2150	2150	2150	2150	2150
25	Area under P.O.	2150	2150	2150	2150	2150	2150
26	Area under P.O.	2150	2150	2150	2150	2150	2150
27	Area under P.O.	2150	2150	2150	2150	2150	2150
28	Area under P.O.	2150	2150	2150	2150	2150	2150
29	Area under P.O.	2150	2150	2150	2150	2150	2150
30	Area under P.O.	2150	2150	2150	2150	2150	2150
31	Area under P.O.	2150	2150	2150	2150	2150	2150
32	Area under P.O.	2150	2150	2150	2150	2150	2150
33	Area under P.O.	2150	2150	2150	2150	2150	2150
34	Area under P.O.	2150	2150	2150	2150	2150	2150
35	Area under P.O.	2150	2150	2150	2150	2150	2150
36	Area under P.O.	2150	2150	2150	2150	2150	2150
37	Area under P.O.	2150	2150	2150	2150	2150	2150
38	Area under P.O.	2150	2150	2150	2150	2150	2150
39	Area under P.O.	2150	2150	2150	2150	2150	2150
40	Area under P.O.	2150	2150	2150	2150	2150	2150
41	Area under P.O.	2150	2150	2150	2150	2150	2150
42	Area under P.O.	2150	2150	2150	2150	2150	2150
43	Area under P.O.	2150	2150	2150	2150	2150	2150
44	Area under P.O.	2150	2150	2150	2150	2150	2150
45	Area under P.O.	2150	2150	2150	2150	2150	2150
46	Area under P.O.	2150	2150	2150	2150	2150	2150
47	Area under P.O.	2150	2150	2150	2150	2150	2150
48	Area under P.O.	2150	2150	2150	2150	2150	2150
49	Area under P.O.	2150	2150	2150	2150	2150	2150
50	Area under P.O.	2150	2150	2150	2150	2150	2150
51	Area under P.O.	2150	2150	2150	2150	2150	2150
52	Area under P.O.	2150	2150	2150	2150	2150	2150
53	Area under P.O.	2150	2150	2150	2150	2150	2150
54	Area under P.O.	2150	2150	2150	2150	2150	2150
55	Area under P.O.	2150	2150	2150	2150	2150	2150
56	Area under P.O.	2150	2150	2150	2150	2150	2150
57	Area under P.O.	2150	2150	2150	2150	2150	2150
58	Area under P.O.	2150	2150	2150	2150	2150	2150
59	Area under P.O.	2150	2150	2150	2150	2150	2150
60	Area under P.O.	2150	2150	2150	2150	2150	2150
61	Area under P.O.	2150	2150	2150	2150	2150	2150
62	Area under P.O.	2150	2150	2150	2150	2150	2150
63	Area under P.O.	2150	2150	2150	2150	2150	2150
64	Area under P.O.	2150	2150	2150	2150	2150	2150
65	Area under P.O.	2150	2150	2150	2150	2150	2150
66	Area under P.O.	2150	2150	2150	2150	2150	2150
67	Area under P.O.	2150	2150	2150	2150	2150	2150
68	Area under P.O.	2150	2150	2150	2150	2150	2150
69	Area under P.O.	2150	2150	2150	2150	2150	2150
70	Area under P.O.	2150	2150	2150	2150	2150	2150
71	Area under P.O.	2150	2150	2150	2150	2150	2150
72	Area under P.O.	2150	2150	2150	2150	2150	2150
73	Area under P.O.	2150	2150	2150	2150	2150	2150
74	Area under P.O.	2150	2150	2150	2150	2150	2150
75	Area under P.O.	2150	2150	2150	2150	2150	2150
76	Area under P.O.	2150	2150	2150	2150	2150	2150
77	Area under P.O.	2150	2150	2150	2150	2150	2150
78	Area under P.O.	2150	2150	2150	2150	2150	2150
79	Area under P.O.	2150	2150	2150	2150	2150	2150
80	Area under P.O.	2150	2150	2150	2150	2150	2150
81	Area under P.O.	2150	2150	2150	2150	2150	2150
82	Area under P.O.	2150	2150	2150	2150	2150	2150
83	Area under P.O.	2150	2150	2150	2150	2150	2150
84	Area under P.O.	2150	2150	2150	2150	2150	2150
85	Area under P.O.	2150	2150	2150	2150	2150	2150
86	Area under P.O.	2150	2150	2150	2150	2150	2150
87	Area under P.O.	2150	2150	2150	2150	2150	2150
88	Area under P.O.	2150	2150	2150	2150	2150	2150
89	Area under P.O.	2150	2150	2150	2150	2150	2150
90	Area under P.O.	2150	2150	2150	2150	2150	2150
91	Area under P.O.	2150	2150	2150	2150	2150	2150
92	Area under P.O.	2150	2150	2150	2150	2150	2150
93	Area under P.O.	2150	2150	2150	2150	2150	2150
94	Area under P.O.	2150	2150	2150	2150	2150	2150
95	Area under P.O.	2150	2150	2150	2150	2150	2150
96	Area under P.O.	2150	2150	2150	2150	2150	2150
97	Area under P.O.	2150	2150	2150	2150	2150	2150
98	Area under P.O.	2150	2150	2150	2150	2150	2150
99	Area under P.O.	2150	2150	2150	2150	2150	2150
100	Area under P.O.	2150	2150	2150	2150	2150	2150



**PROFORMA 'B'**

Scale of Survey: 1:500

Project Name: [Blank]

Project Location: [Blank]

Project Description: [Blank]

Project Status: [Blank]

Project Date: [Blank]

Project Engineer: [Blank]

Project Designer: [Blank]

Project Checker: [Blank]

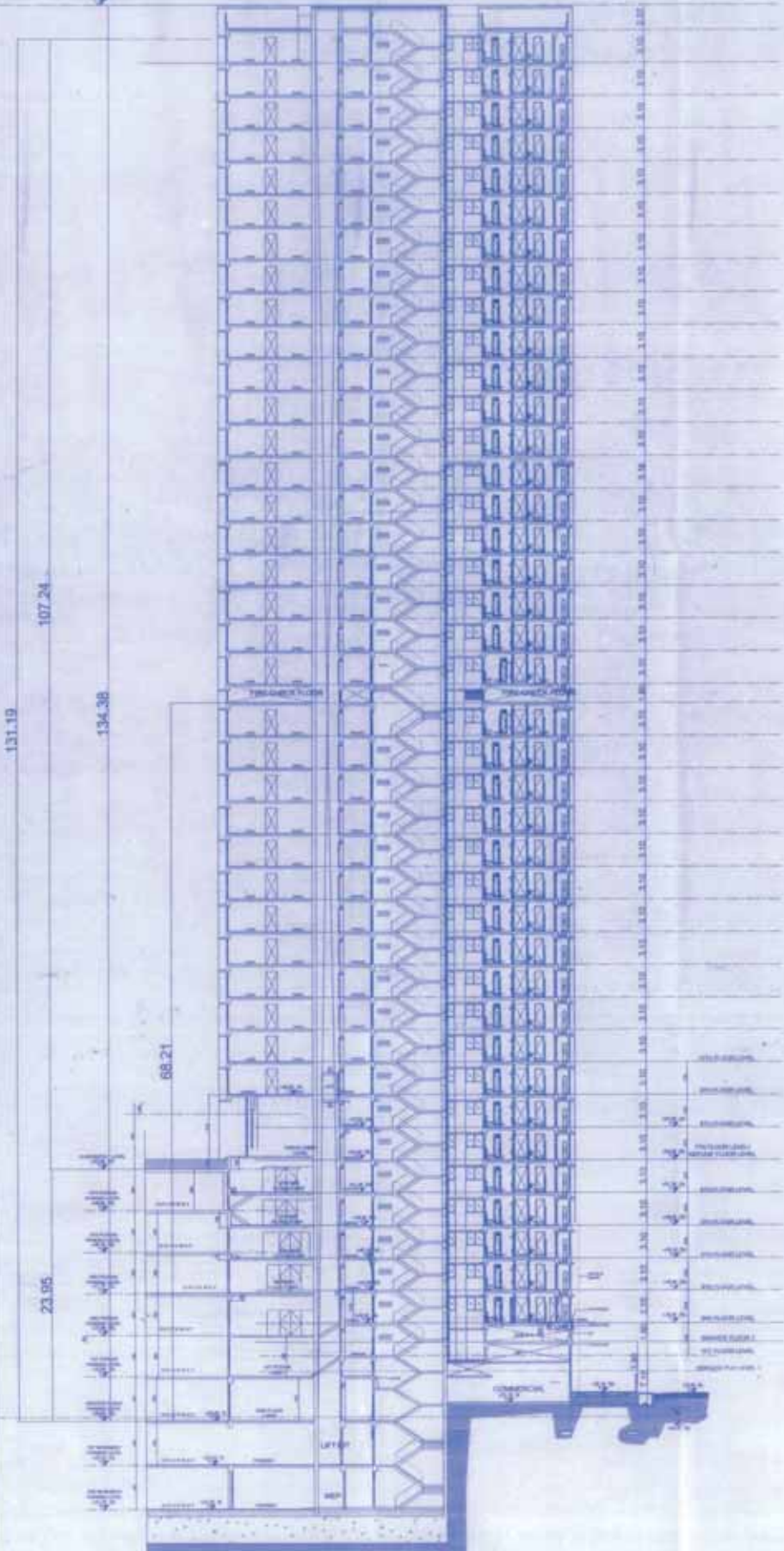
Project Approver: [Blank]

Project Date: 18-10-2019



APPROVED FOR CONSTRUCTION  
DATE: 11/14/2021

+120.56 AMSL



107.24

131.19

134.38

68.21

23.95

117.00  
117.05  
117.10  
117.15  
117.20  
117.25  
117.30  
117.35  
117.40  
117.45  
117.50  
117.55  
117.60  
117.65  
117.70  
117.75  
117.80  
117.85  
117.90  
117.95  
120.00

SECTION B-B  
SCALE: 1/200

Approved Subject to the condition  
stipulated in this contract and  
subject to the provisions of the  
contract documents.  
11/14/2021

PROVISIONS