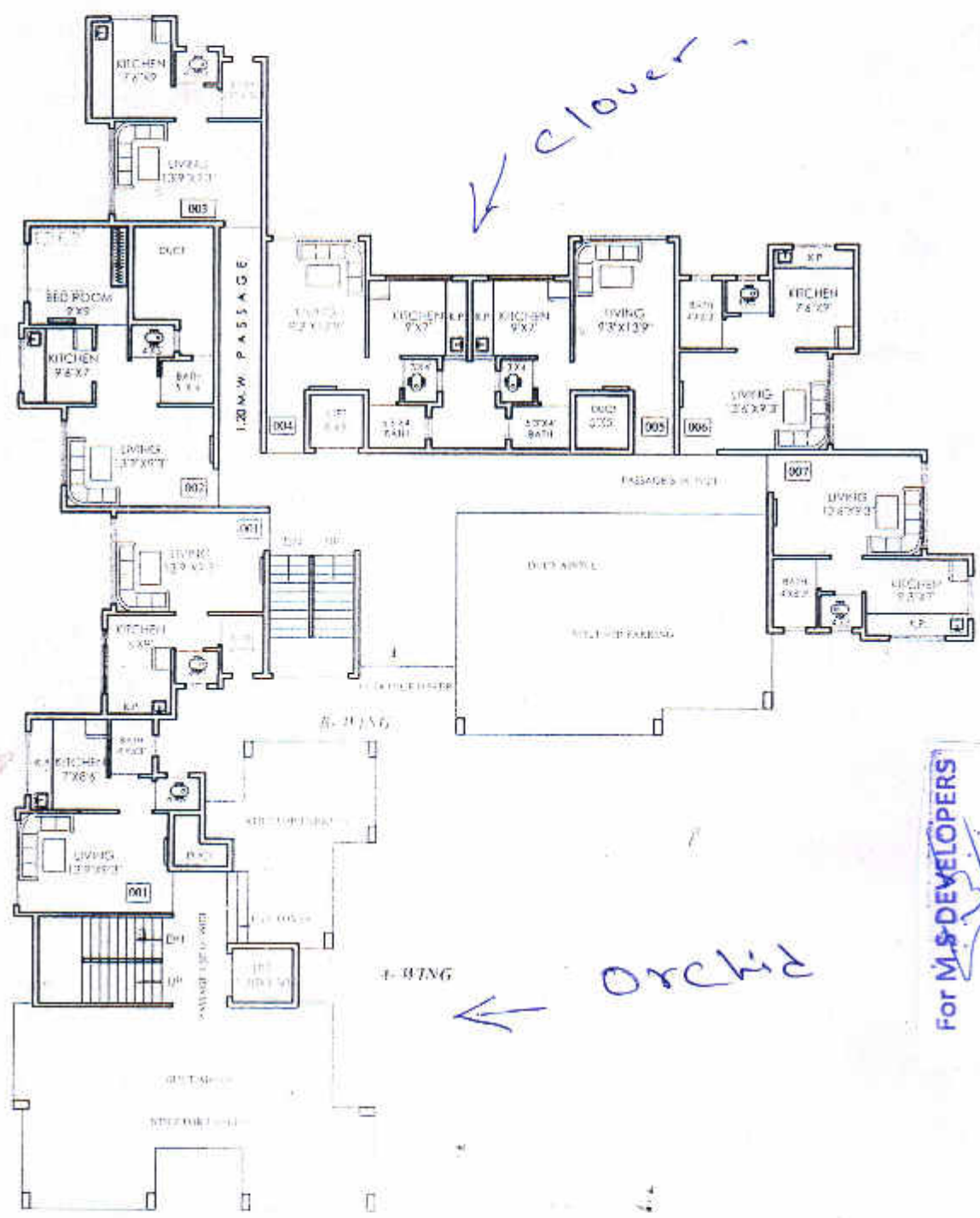


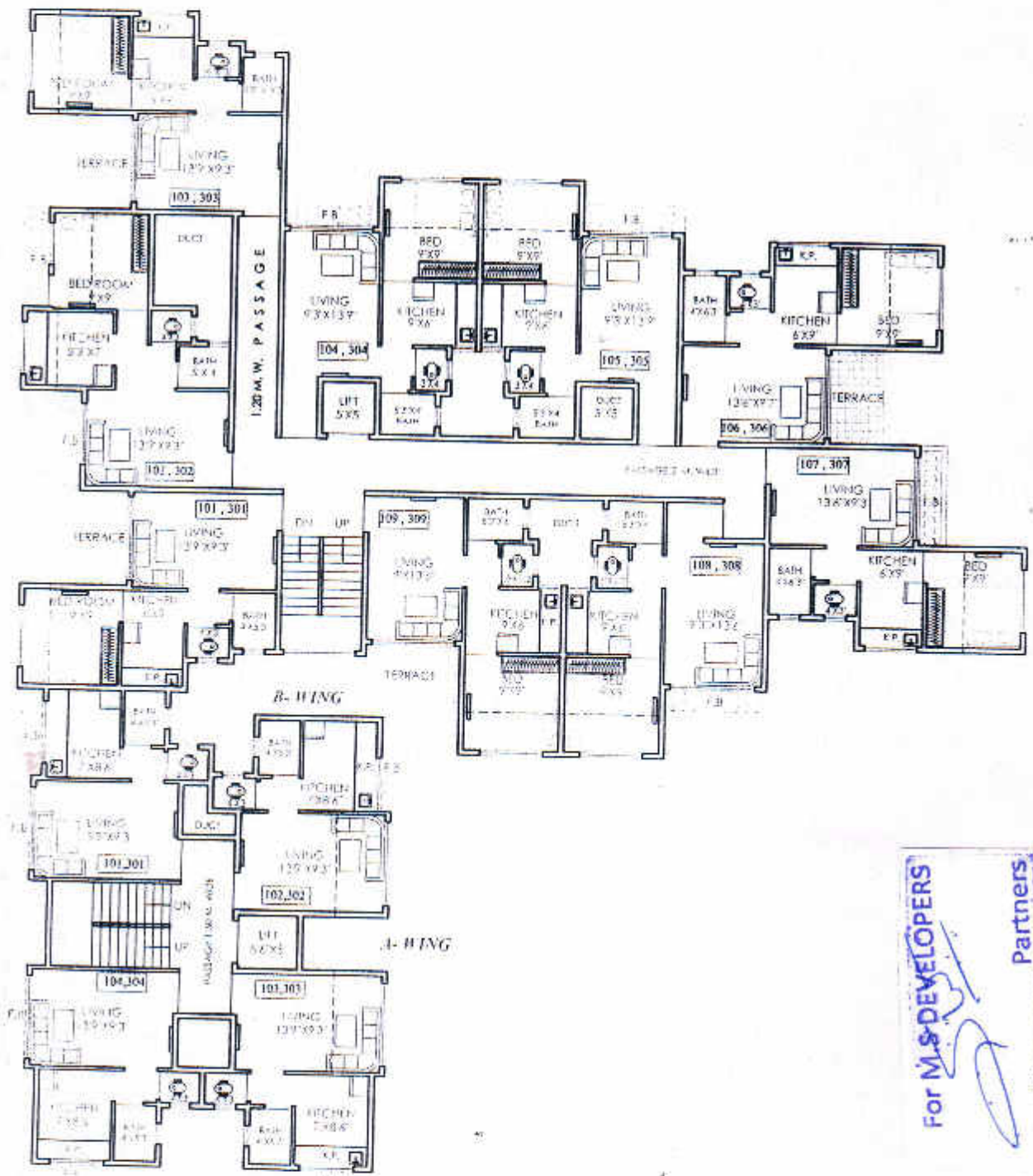
108 S Y 16 313
Nandkumar Sase

2nd binda sau-p jan



For M.S. DEVELOPERS
Partners

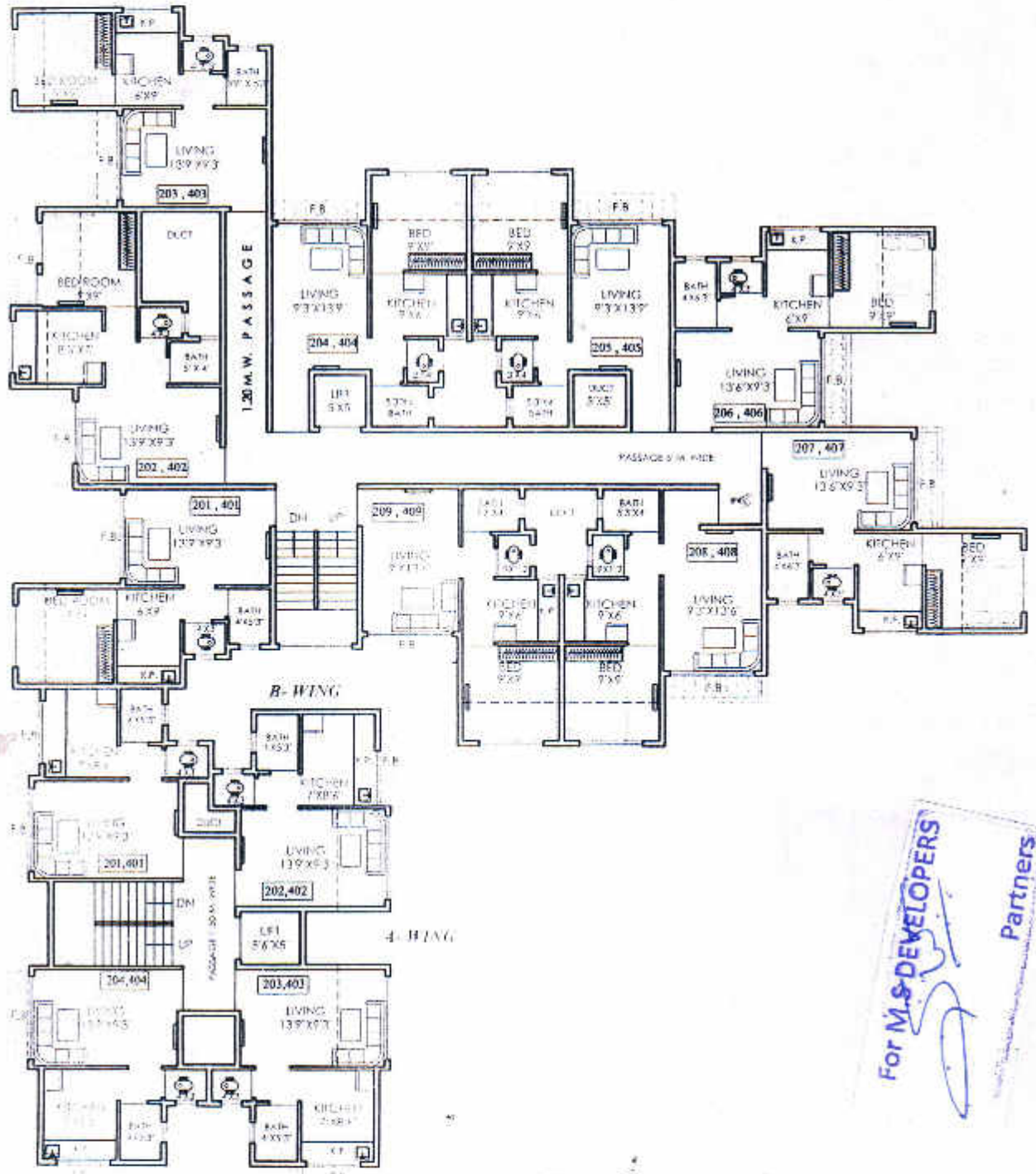
DESCRIPTION	DRAWN BY	DATE	ARCHITECTS & CONSULTANTS
PROPOSED AMALGAMATION OF PLOT WITH BUILDING PROPOSAL ON FINAL PLOT NO. 47 TO 50 & 52, 53 S.NO. 85 VILL - KAMBA TAL. - KALYAN, DIST THANE.	NANDU	JUN - 16 - 2018	De-con Consultants ARCHITECTS, INTERIOR DESIGNERS, PROJECT MANAGERS & PROJECT CONSULTANTS S.T. RAJAWADE FORT, SHAMBAWATI LANE No. 5, KALYANWEST-421 304, PH: 9822 400 2293.




For M/S DEVELOPERS

Partners

DESCRIPTION	DRAWN BY	DATE	ARCHITECTS & CONSULTANTS
PROPOSED AMALGAMATION OF PLOT WITH BUILDING PROPOSAL ON FINAL PLOT NO. 47 TO 50 & 52, 53 S.NO.65 VILL - KAMBA TAL - KALYAN, DIST. THANE.	NANDU	JUN - 16, 2018	 ARCHITECTS, INTERIOR DESIGNERS, REAL ESTATE & PROJECT CONSULTANTS S-1, RAJASHREE TOWER, RAJRAJ, LANE No. 2 KALYAN (WEST) 421 304. PHONE NO. 270992



For M.S. DEVELOPERS
Partners

DESCRIPTION	DRAWN BY	DATE	ARCHITECTS & CONSULTANTS
PROPOSED AMALGAMATION OF PLOT WITH BUILDING PROPOSAL ON FINAL PLOT NO. 47 TO 52, 53 S.NO.65 VILL - KAMBA TAL - KALYAN, DIST. THANE.	NANDU	JUN - 16 , 2018	 Te-con Consultants ARCHITECTS, INTERIOR DESIGNERS, PEST, VALUERS & PROJECT CONSULTANTS S1, RAJASHREE TOWER, RAMBAUD, LANE No. 8 KALYAN(WEST) 421 304, PHONE NO. 233230